



USER MANUAL

AIR SAW

MODELS : FRS-45



FRS-45



SPECIFICATIONS

Model	Stroke Per Second	Stroke		Overall Length		Mass		Air Consumption		Air Inlet Thread Size	Air Hose Size	
	Hz	mm	in	mm	in	kg	lb	m ³ /min	ft ³ /min	in	mm	in
FRS-45	20	45	1 25/32	421	16 37/64	2.9	6.3	0.4	14.1	PTorNPT 1/4	9.5	3/8

The performance figures are at 0.63 MPa (6.3 bar).



Refer to "The Instructions and Warning for Safety Use" enclosed in each tool box.

FUJI AIR TOOLS CO., LTD.

2-1-14Kamiji, Higashinariku, Osaka 537-0003, Japan

Tel : (06) 6972-2335

Fax : (06) 6972-2250

BOLT & NUT SETTERS
SCREW DRIVERS

ABRASIVE TOOLS

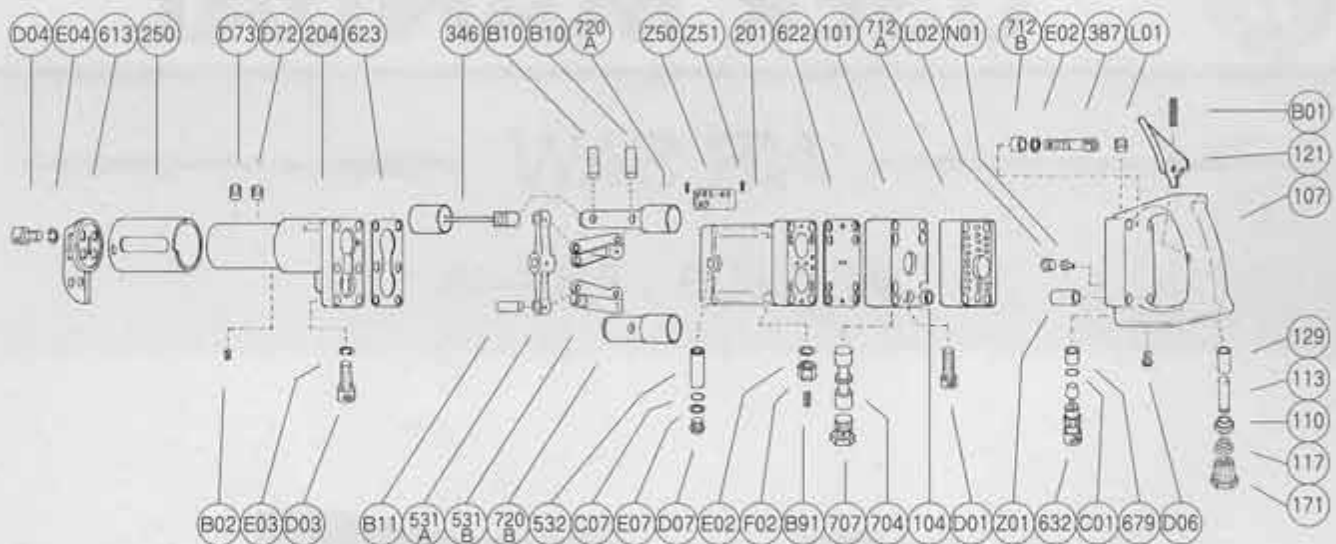
DRILLS · TAPPERS

PERCUSSION TOOLS

AIR MOTORS & OTHERS

OTHER PRODUCTS

EXPLODED VIEW



PARTS LIST

Index No.	Parts No.	Parts Name	Qt.	Index No.	Parts No.	Parts Name	Qt.
Ass'y No.	S-112002-00	Handle Ass'y		622	S-112622-00	Packing 	1
107	S-112107-00	Handle	1	623	S-101623-00	Packing <C>	1
110	H-001110-02	Throttle Valve	1	704	S-101704-00	Valve	1
113	H-063113-00	Throttle Valve Rod	1	707	S-101707-00	Valve Cover	2
117	D-001117-00	Throttle Valve Spring	1	712A	S-112712-00	Damper <A>	1
121	W-162121-00	Throttle Valve Lever	1	712B	S-112712-01	Damper 	4
129	H-014129-00	Throttle Valve Rod Bushing	1	720A	S-101720-00	Piston <A>	1
171	IB-3020S0	Inlet Bushing <PT> or	1	720B	S-101720-01	Piston 	1
	IB-302NS0	Inlet Bushing <NPT>	1	B02	SP-36	Spring Pin	1
632	S-101632-00	Regulator	1	B10	GP-626GCH	Grooved Pin	3
679	S-101679-00	Regulator Bushing	1	B11	GP-612BCH	Grooved Pin	2
B01	SP-316	Spring Pin	1	B91	SP-1.610	Spring Pin	4
C01	O-S6	"O" Ring	1	C07	O-P6	"O" Ring	2
D06	CS-48B	Cap Screw	1	D01	CS-530	Cap Screw	4
L01	PL-1/4	Plug	1	D03	CS-522	Cap Screw	6
L02	PL-1/8	Plug	1	D04	CS-412	Cap Screw	4
N01	GN-BIN #D26D	Grease Nipple	1	D07	CS-58B	Cap Screw	2
101	S-112101-00	Housing Cover	1	D72	SS-814C	Set Screw	1
104	S-112104-00	Bushing	1	D73	SS-812	Set Screw	1
201	S-112201-00	Housing	1	E02	PW-6	Plain Washer	8
204	S-112204-00	Housing Lower Cover	1	E03	SW-5	Spring Washer	6
250	S-101250-00	Exhaust Cover	1	E04	SW-4	Spring Washer	4
346	S-101346-00	Chuck Body	1	E07	PW-5	Plain Washer	2
387	S-112387-00	Locking Bolt	4	F02	SN-6(1)	Slotted Nut <L>	4
531A	S-101531-00	Link	1	Z01	IT-6827	Inlet Tube	1
531B	S-101531-01	Link	2	Z50	NP-3007	Name Plate	1
532	S-101532-00	Link Spindle	1	Z51	NPN-0X3.2	Screw Rivet	2
613	S-101613-00	Guide	1				

■ Standard Accessories

SAW-2018	Saw Blade	1.
SAW-2024	Saw Blade	1.
F-704	4mm Hex. Pin Wrench	1.
F-706	6mm Hex. Pin Wrench	1.
AO-30	Oil(30cc)	1.
CASE-T431	Steel Case	1.

Ass'y No. denotes the assembled parts comprising of more than 1 pc. of parts.

The related parts are shown in the thick frame.

Specify parts number and quantity in ordering.