



# USER MANUAL

## SUMP PUMP

MODELS : FP-7-1



FP-7-1



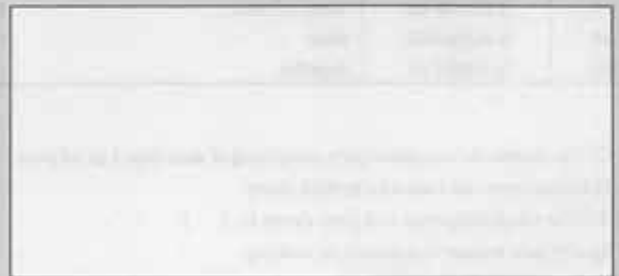
### SPECIFICATIONS

Model	Discharge Capacity (about)				Water Output Thread Size	Air Outlet Thread Size	Height (about)		Weight (about)		Max. Air Consumption (about)		Air Inlet Thread Size	Air Hose Size	
	Head		Discharge				mm	in	kg	lb	m³/min	ft³/min		mm	in
	m	ft	m³/hr	Liter/min											
FP-7-1	15	49	4.2	70	3/4	3/4	234	9 1/4	4.3	9.4	0.80	28.2	3/8	9.5	3/8

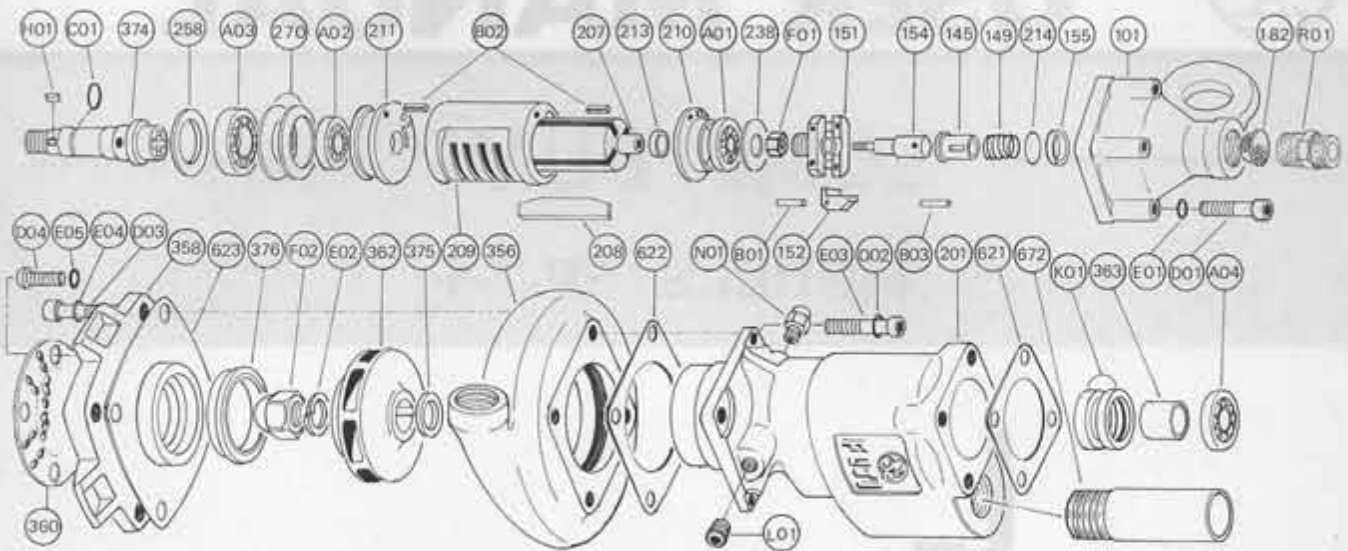
Refer to instructions and warning for safety use enclosed in each tool box.

## FUJI AIR TOOLS CO., LTD.

1-14, Kamiji 2-chome, Higashinari-ku, Osaka, 537 Japan  
 Tel : (06) 972-2335  
 Fax : (06) 972-2250



## EXPLODED VIEW



FP-7-1

## PARTS LIST

Index No.	Parts No.	Parts Name	Qt.	Index No.	Parts No.	Parts Name	Qt.
<b>FP-7-1</b>							
<b>CP No.</b>	<b>A-065010-03</b>	<b>Governor Weight CP</b>		363	S-018363-01	Impeller Spacer	1
151	A-065151-00	Governor Cage	1	374	S-018374-01	Impeller Shaft	1
152	A-010152-00	Governor Weight	2	375	S-018375-01	Impeller Washer	1
154	A-108154-00	Governor Shaft	1	376	S-018376-00	Liner Ring	1
B01	GP-2.516GCH	Grooved Pin	2	621	S-018621-00	Packing (A)	1
F01	N-3	Nut	2	622	S-018622-01	Packing (B)	1
101	S-018101-01	Housing Cover	1	623	S-018623-00	Packing (C)	1
145	A-065145-00	Governor Valve	1	672	S-018672-01	Exhaust Pipe	1
149	G-063149-00	Governor Valve Spring	1	A01	BB-6001	Ball Bearing	1
155	A-065155-00	Governor Valve Spring Holder	1	A02	BB-629	Ball Bearing	1
182	W-025182-00	Strainer	1	A03	BB-6202	Ball Bearing	1
201	S-018201-02	Housing	1	A04	BB-6201	Ball Bearing	1
207	S-018207-00	Rotor	1	B03	NR-211.8	Needle Roller	1
208	G-042208-00	Rotor Blade	4	C01	O-S10	"O" Ring	1
209	G-042209-00	Cylinder	1	D01	CS-540	Cap Screw	4
(B02)	SP-26	Spring Pin	2	D02	CS-516SUS	Cap Screw	4
210	S-018210-01	Cylinder Upper Plate	1	D03	CS-618SUS	Cap Screw	4
211	S-018211-01	Cylinder Lower Plate	1	D04	S-510R	Screw	4
213	A-010213-00	Adjusting Collar	1	E01	SW-5	Spring Washer	4
214	A-065214-00	Adjusting Washer (T = 0.2)	1	E02	SW-8	Spring Washer	1
238	A-065238-00	Bearing Cover (B)	1	E03	SW-5	Spring Washer	4
258	S-018258-00	Washer (B)	1	E04	SW-6	Spring Washer	4
270	W-025270-00	Conical Spring Washer	2	E05	SW-5	Spring Washer	4
356	S-018356-01	Impeller Case	1	F02	CN-8(2)	Nut	1
358	S-018358-02	Suction Cover	1	H01	K-336	Key	1
360	S-018360-02	Filter	1	K01	OS-SAJ16307	Oil Seal	2
362	S-018362-01	Impeller	1	L01	PL-1/8	Plug	1
				N01	GN-PT1/8	Grease Nipple	1
				R01	JN-3/8(B)	Nipple	1

## ■ Standard Accessories :

F-705	5Hex. Hex. Pin Wrench	1.
BV-3/8	Ball Valve	1.
S-018681-00	Water Hose Joint	1.
S-018682-00	Water Hose Joint Cup Nut	1.
S-018684-00	Water Hose Nipple	1.

□ CP No. denotes the assembled parts comprising of more than 1 pc. of parts.

The related parts are shown in the thick frame.

□ # 209 is supplied together with parts shown in ( ).

□ Specify parts number and quantity in ordering.