



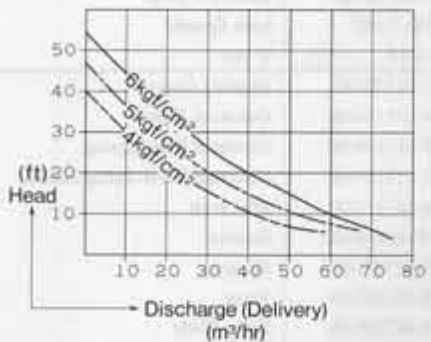
USER MANUAL

SUMP PUMP

MODELS : FP-35-1



FP-35-1



SPECIFICATIONS

Model	Discharge Capacity (about)				Water Output Thread Size	Air Outlet Thread Size	Height (about)		Weight (about)		Max. Air Consumption (about)		Air Inlet Thread Size	Air Hose Size	
	Head		Discharge				mm	in	kg	lb	m³/min	ft³/min		mm	in
	mm	ft	m³/hr	Liter/min											
FP-35-1	28	92	28.0	467	82.5	1 1/4	410	16 1/16	34.0	74.8	5.20	183.6	1	25.4	1

⚠ Refer to instructions and warning for safety use enclosed in each tool box.

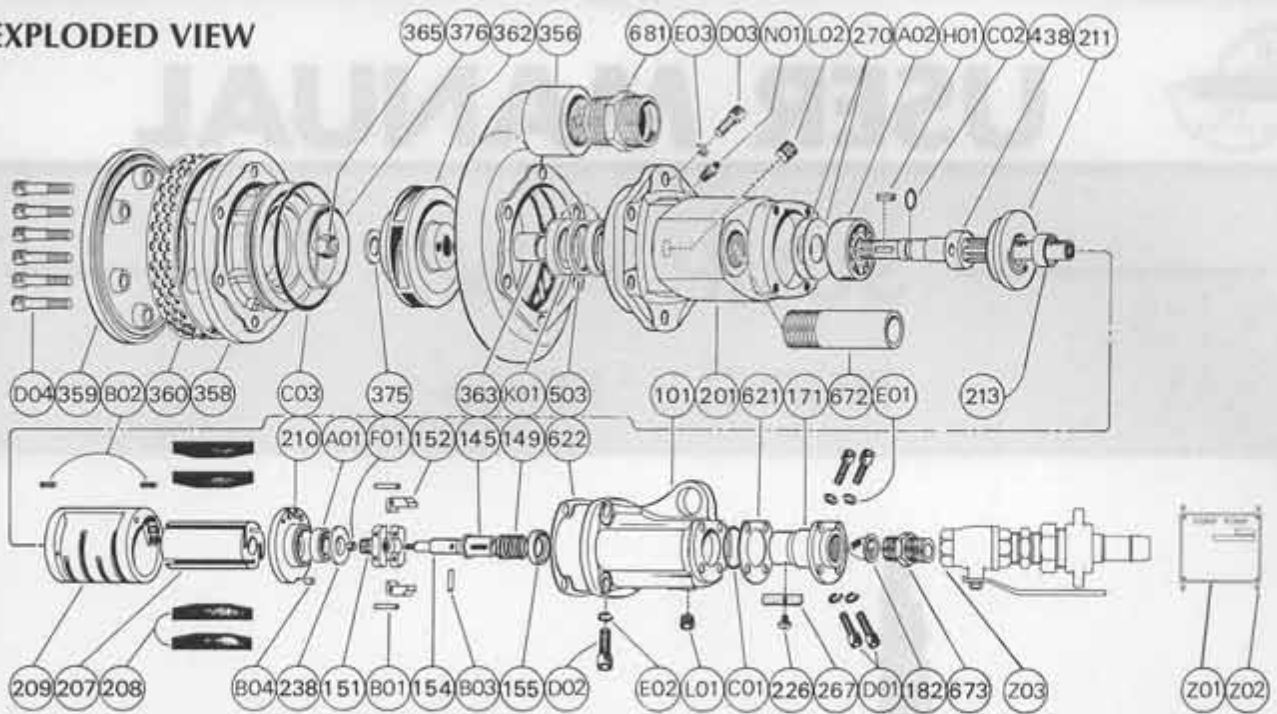
FUJI AIR TOOLS CO., LTD.

1-14, Kamiji 2-chome, Higashinari-ku, Osaka, 537 Japan
 Tel : (06) 972-2335
 Fax : (06) 972-2250



BOLT & NUT SETTERS
 SCREW DRIVERS
 ABRASIVE TOOLS
 DRILLS · TAPPERS
 PERCUSSION TOOLS
 AIR MOTORS & OTHERS
 OTHER PRODUCTS

EXPLODED VIEW



PARTS LIST

FP-35-1

Index No.	Parts No.	Parts Name	Qt.
FP-35-1			
CP No.	S-017010-00	Governor Weight - CP	
151	S-017151-00	Governor Cage	1
152	S-017152-00	Governor Weight	2
154	S-017154-00	Governor Shaft	1
B01	NR-3.532	Link Spindle	2
F01	UN-5	U Nut	1
101	S-017101-01	Housing Cover	1
145	S-017145-00	Governor Valve	1
149	S-017149-00	Governor Valve Spring	1
155	S-017155-00	Governor Valve Spring Holder	1
171	S-017171-00	Inlet Joint	1
182	W-014182-00	Strainer	1
201	S-017201-00	Housing	1
207	S-017207-00	Rotor	1
208	S-017208-00	Rotor Blade	4
209	S-017209-00	Cylinder	1
(B02)	SP-516	Spring Pin	2
210	S-017210-00	Cylinder Upper Plate	1
211	S-017211-01	Cylinder Lower Plate	1
213	S-017213-00	Adjusting Collar	1
226	A-038226-A	Oil Plug	1
238	S-017238-00	Bearing Cover (B)	1
267	A-020267-00	Oil Plug Felt	1
270	S-017270-00	Conical Spring Washer	2
356	S-017356-00	Impeller Case	1
358	S-017358-00	Bed Plate (Upper)	1
359	S-017359-00	Bed Plate (Lower)	1
360	S-017360-00	Filter	1
362	S-017362-00	Impeller	1
363	S-017363-01	Impeller Spacer	1
365	S-017365-00	Spindle Nut	1
375	S-017375-00	Impeller Washer	1
376	S-017376-00	Liner Ring	1
438	S-017438-02	Spindle	1

Index No.	Parts No.	Parts Name	Qt.
503	S-017503-00	Spacer	1
621	S-017621-01	Packing (A)	1
622	S-017622-00	Packing (B)	1
672	S-017672-00	Exhaust Pipe	1
673	S-017673-00	Nipple	1
681	S-016681-00	Water Hose Joint	1
A01	BB-6303	Ball Bearing	1
A02	BB-5305	Ball Bearing	1
B03	NR-3.523.8	Needle Roller	1
B04	P-67	Pin	1
C01	O-P32	"O" Ring	1
C02	O-P16	"O" Ring	1
C03	O-G135	"O" Ring	1
D01	CS-614	Cap Screw	4
D02	CS-825	Cap Screw	4
D03	CS-820SUS	Cap Screw	6
D04	CS-855SUS	Cap Screw	6
E01	SW-6	Spring Washer	4
E02	SW-8SUS	Spring Washer	4
E03	SW-8SUS	Spring Washer	6
H01	K-5520	Key	1
K01	OS-SAJ32528	Oil Seal	2
L01	PL-1/4	Plug	1
L02	PL-1/4	Plug	1
N01	GN-PT1/8	Grease Nipple	1
Z01	NP-0334	Name Plate	1
Z02	NPN-0X4.8	Screw Rivet	4
Z03	BV-1	Ball Valve	1

□ CP No. denotes the assembled parts comprising of more than 1 pc. of parts.

The related parts are shown in the thick frame.

□ * 209 is supplied together with parts shown in ().

□ Specify parts number and quantity in ordering.

■ Standard Accessories :

F-706 6Hex Hex. Pin Wrench 1.

S-017696-00 Hose Coupling 1.