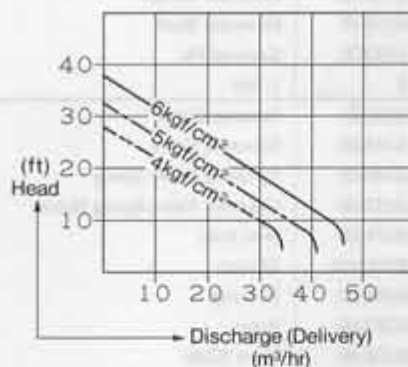


# USER MANUAL

## SUMP PUMP

MODELS : FP-20-1

FP-20-1



### SPECIFICATIONS

Model	Discharge Capacity (about)				Water Output Thread Size	Air Outlet Thread Size	Height (about)		Weight (about)		Max. Air Consumption (about)		Air Inlet Thread Size	Air Hose Size	
	Head		Discharge				mm	in	kg	lb	m³/min	ft³/min		mm	in
	mm	ft	m³/hr	Liter/min											
FP-20-1	20	66	28.0	467	82.5	1	374	14 <sup>3</sup> / <sub>4</sub>	22.0	48.4	3.40	120.1	3/4	19.0	3/4

**⚠** Refer to instructions and warning for safety use enclosed in each tool box.

**FUJI AIR TOOLS CO., LTD.**

1-14, Kamiji 2-chome, Higashinari-ku, Osaka, 537 Japan

Tel : (06) 972-2335

Fax : (06) 972-2250

BOLT & NUT SETTERS  
SCREW DRIVERS

ABRASIVE TOOLS

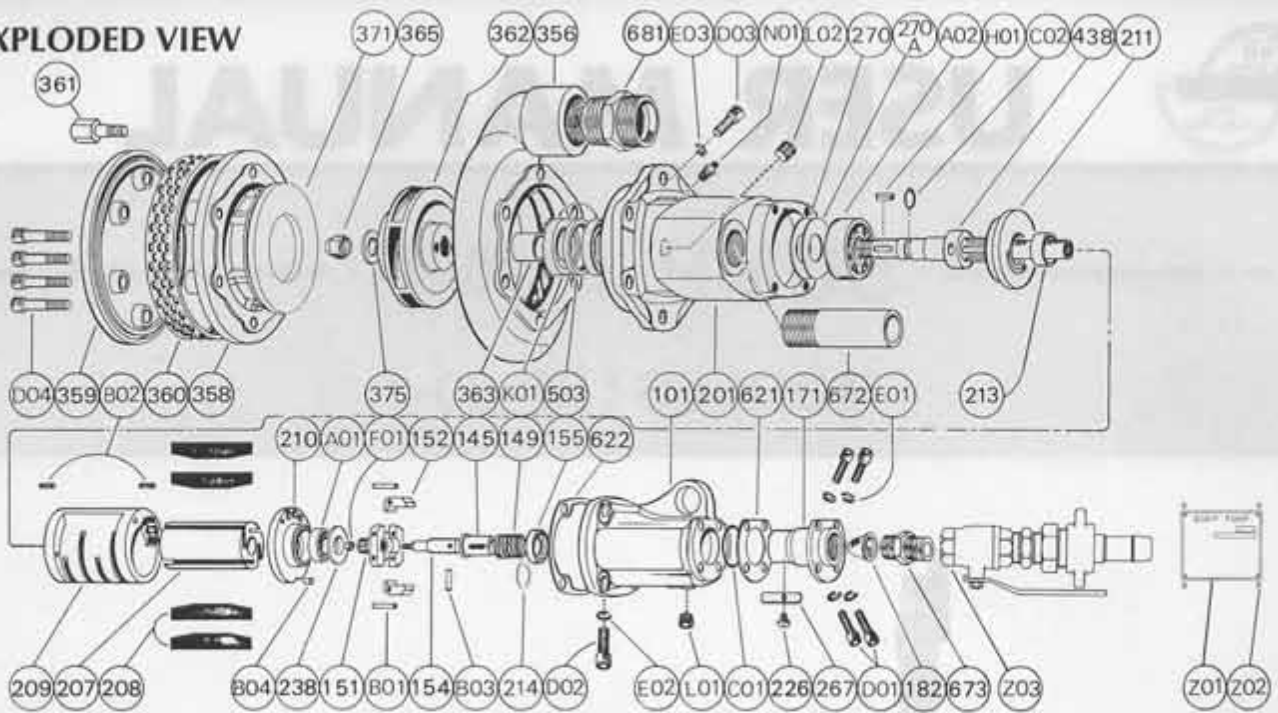
DRILLS · TAPPERS

PERCUSSION TOOLS

AIR MOTORS & OTHERS

OTHER PRODUCTS

## EXPLODED VIEW



## PARTS LIST

FP-20-1

Index No.	Parts No.	Parts Name	Qt.	Index No.	Parts No.	Parts Name	Qt.
<b>FP-20-1</b>							
CP No.	<b>S-016010-01</b>	<b>Governor CP</b>		375	S-016375-00	Impeller Washer	1
151	S-016151-00	Governor Cage	1	438	S-016438-02	Spindle	1
152	S-016152-00	Governor Weight	2	503	S-016503-00	Spacer	1
154	S-016154-00	Governor Shaft	1	621	S-016621-01	Packing (A)	1
B01	GP-330GCH	Grooved Pin	2	622	S-016622-00	Packing (B)	1
F01	UN-5	U Nut	1	672	S-016672-00	Exhaust Pipe	1
101	S-016101-01	Housing Cover	1	673	S-016673-00	Nipple	1
145	S-016145-00	Governor Valve	1	681	S-016681-00	Water Hose Joint	1
149	S-016149-00	Governor Valve Spring	1	A01	BB-6203	Ball Bearing	1
155	S-016155-00	Governor Valve Spring Holder	1	A02	BB-5304	Ball Bearing	1
171	S-016171-00	Inlet Joint	1	B03	NR-318.8	Needle Roller	1
182	W-065182-00	Strainer	1	B04	P-67	Pin	1
201	S-016201-00	Housing	1	C01	O-G25	"O" Ring	1
207	S-016207-00	Rotor	1	C02	O-P15	"O" Ring	1
208	S-016208-00	Rotor Blade	4	D01	CS-614	Cap Screw	4
209	S-016209-00	Cylinder	1	D02	CS-825	Cap Screw	4
(B02)	SP-410	Spring Pin	2	D03	CS-820SUS	Cap Screw	4
210	S-016210-00	Cylinder Upper Plate	1	D04	CS-815SUS	Cap Screw	4
211	S-016211-01	Cylinder Lower Plate	1	E01	SW-6	Spring Washer	4
213	S-016213-00	Adjusting Collar	1	E02	SW-8	Spring Washer	4
214	S-016214-00	Adjusting Washer (T = 0.2)	1	E03	SW-8	Spring Washer	4
226	A-038226-A	Oil Plug	1	H01	K-4415	Key	1
238	A-078238-00	Bearing Cover (B)	1	K01	OS-SAJ25458	Oil Seal	2
267	A-020267-00	Oil Plug Felt	1	L01	PL-1/4	Plug	1
270	S-016270-01	Conical Spring Washer	1	L02	PL-1/4	Plug	1
270A	S-016270-02	Conical Spring Washer	1	N01	GN-PT1/8	Grease Nipple	1
356	S-016356-00	Impeller Case	1	Z01	NP-0333	Name Plate	1
358	S-016358-00	Bed Plate (Upper)	1	Z02	NPN-0X4.8	Screw Rivet	4
359	S-016359-00	Bed Plate (Lower)	1	Z03	BV-3/4	Ball Valve	1
360	S-016360-00	Filter	1				
361	S-016361-00	Bed Plate Bolt	4				
362	S-016362-00	Impeller	1				
363	S-016363-01	Impeller Spacer	1				
365	S-016365-01	Spindle Nut	1				
371	S-016371-00	Bed Plate Cover	1				

□ CP No. denotes the assembled parts comprising of more than 1 pc. of parts.

The related parts are shown in the thick frame.

□ # 209 is supplied together with parts shown in ( ).

□ Specify parts number and quantity in ordering.

■ Standard Accessories

F-706 ..... 6Hex Hex. Pin Wrench 1.

S-016696-00 ..... Joint Nut 1.