



USER MANUAL

SAND RAMMERS

MODELS : FR-18L, -18L-1, -1F, -2F



FR-18L, -18L-1



FR-18L-1F, -2F

SPECIFICATIONS

Model		Blows Per Second (about)	Piston Diameter		Stroke (about)		Butt Diameter		Overall Length (about)		Mass (about)		Air Consumption Under Load (about)		Air Inlet Thread Size	Air Hose Size	
Standard	Non-Rotary	Hz	mm	in	mm	in	mm	in	mm	in	kg	lb	Nm ³ /min	NI ³ /min	PT or NPT	mm	in
FR-18L	FR-18L-1	30	18.0	45/64	50	1 ³¹ / ₃₂	51	2 ¹ / ₆₄	558	21 ³¹ / ₃₂	2.0	4.4	0.40	14.1	1/4"	9.5	3/8
FR-18L-2F	FR-18L-1F	30	18.0	45/64	50	1 ³¹ / ₃₂	51	2 ¹ / ₆₄	561	22 ³ / ₃₂	2.0	4.4	0.40	14.1	3/8"	9.5	3/8

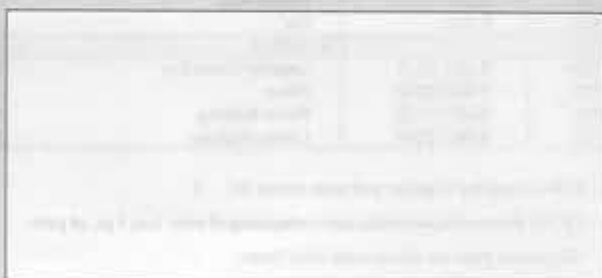
The performance figures are at 0.63 MPa (6.3 bar).



Refer to "The Instructions and Warning for Safety Use" enclosed in each tool box.

FUJI AIR TOOLS CO., LTD.

1-14, Kamiji 2-chome, Higashinari-ku,
Osaka, 537-0003 Japan
Tel : (06) 972-2335
Fax : (06) 972-2250



BOLT & NUT SETTERS
SCREW DRIVERS

ABRASIVE TOOLS

DRILLS · TAPPERS

PERCUSSION TOOLS

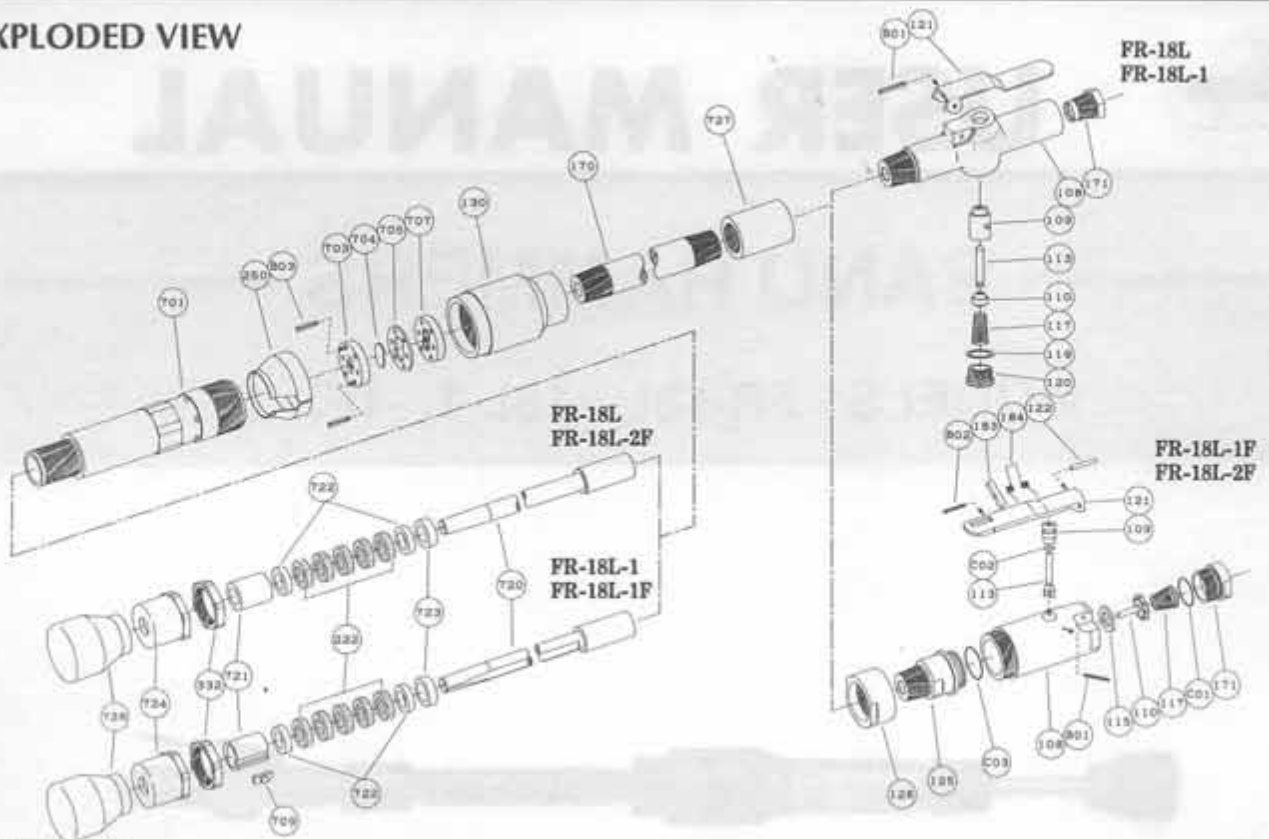
AIR MOTORS & OTHERS

OTHER PRODUCTS



PARTS LIST MODEL : FR-18L, -18L-1, -1F, -2F

EXPLODED VIEW



PARTS LIST

Index No.	Parts No.	Parts Name	Qt.
FR-18L, -18L-1			
CP No.	R-002002-00	Handle CP	
170	R-002170-00	Pipe	1
727	H-021727-00	Socket Joint	1
CP No.	R-002003-00	Throttle Valve Body CP	
108	R-002003-50	Throttle Valve Body	1
(109)	G-028109-00	Throttle Valve Bushing	1
117	D-001117-00	Throttle Valve Spring	1
119	G-028119-00	T.V. Cover Packing	1
120	G-028120-00	Throttle Valve Cover	1
121	R-002121-00	Throttle Valve Lever	1
171	IB-3020S0	Inlet Bushing < PT >	1
171	IB-302NS0	Inlet Bushing < NPT >	1
B01	SP-320	Spring Pin	1
CP No.	G-028008-00	Throttle Valve Rod CP	
110	H-001110-02	Throttle Valve	1
113	G-028113-00	Throttle Valve Rod	1
130	R-002130-00	Cap	5
222	R-001222-00	Felt Ring	1
250	R-001250-00	Exhaust Cover	1
332	R-001332-00	Lock Nut	1
701	R-002701-00	Cylinder	1
703	R-001703-00	Valve Sheet	1
704	R-001704-00	Valve	1
705	R-001705-00	Valve Case	1
707	R-001707-00	Valve Cover	1
720	R-001720-00	Piston	1
721	R-001721-00	Piston Bushing	1
722	R-001722-00	Leather Packing	2
723	R-001723-00	Packing Sheet	1
724	R-001724-00	Grand	1
726	R-1	Rubber Butt	2
B03	P-316	Pin	1
FR-18L-1			
709	R-001709-D	Locking Clutch Key	1
720	R-001720-D	Piston	1
721	R-001721-D	Piston Bushing	1
722	R-001722-D	Leather Packing	2

Index No.	Parts No.	Parts Name	Qt.
FR-18L-1F, -2F			
CP No.	R-002002-01	Handle CP	
170	R-002170-00	Pipe	1
727	H-021727-00	Socket Joint	1
CP No.	Y-020003-00	Throttle Valve CP	
108	Y-020108-00	Throttle Valve Body	1
109	Y-020109-00	Throttle Valve Bushing	1
110	Y-020110-00	Throttle Valve	1
113	Y-020113-00	Throttle Valve Rod	1
115	Y-020115-00	Throttle Valve Sheet	1
117	Y-020117-00	Throttle Valve Spring	1
121	G-144121-02	Throttle Valve Lever	1
122	H-001122-00	Throttle Valve Lever Pin	1
125	Y-020125-00	Throttle Valve Stem	1
126	Y-020126-00	Throttle Valve Stem Nut	1
171	Y-020171-00	Inlet Joint < PT >	1
171	Y-020171-01	Inlet Joint < NPT >	1
183	G-144183-02	Lock Key	1
184	G-144184-00	Lock Spring	1
B01	SP-220	Spring Pin	1
B02	SP-218	Spring Pin	1
C01	O-S22	"O" Ring	1
C02	O-S8	"O" Ring	1
C03	O-S25	"O" Ring	1
130	R-002130-00	Cap	1
222	R-001222-00	Felt Ring	5
250	R-001250-00	Exhaust Cover	1
332	R-001332-00	Lock Nut	1
701	R-002701-01	Cylinder	1
703	R-001703-00	Valve Sheet	1
704	R-001704-00	Valve	1
705	R-001705-00	Valve Case	1
707	R-001707-00	Valve Cover	1
709	R-001709-D	Locking Clutch Key	1
720	R-001720-D	Piston	1
721	R-001721-D	Piston Bushing	1
722	R-001722-D	Leather Packing	2
723	R-001723-00	Packing Sheet	1
724	R-001724-00	Grand	1
726	R-1	Rubber Butt	1
B03	P-316	Pin	2
FR-18L-2F			
701	R-002701-00	Cylinder	1
720	R-001720-00	Piston	1
721	R-001721-00	Piston Bushing	1
722	R-001722-00	Leather Packing	2

- #108 is Supplied Together with parts shown in ().
- CP No. denotes the assembled parts comprising of more than 1 pc. of parts.
The related parts are shown in the thick frame.
- Specify parts number and quantity in ordering.