



USER MANUAL

SAND RAMMERS

MODELS : FR-18B, -18B-1, -1F, -2F



FR-18B, -18B-1



FR-18B-1F, -2F

SPECIFICATIONS

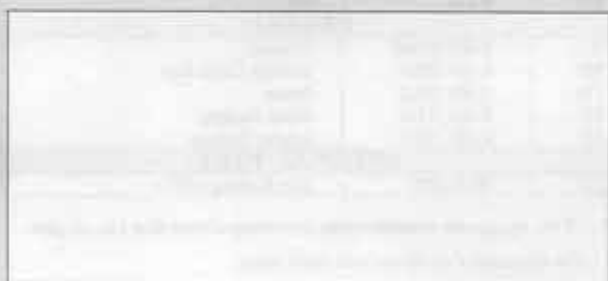
Model		Blows Per Second (about)	Piston Diameter		Stroke (about)		Butt Diameter		Overall Length (about)		Mass (about)		Air Consumption Under Load (about)		Air Inlet Thread Size	Air Hose Size	
Standard	Non-Rotary	Hz	mm	in	mm	in	mm	in	mm	in	kg	lb	Nm ³ /min	lit/min	PT or NPT	mm	in
FR-18B	FR-18B-1	30	18.0	45/64	50	1 ⁷ / ₃₂	51	2 ¹ / ₆₄	273	10 ³ / ₄	1.5	3.3	0.40	14.1	1/4"	9.5	3/8
FR-18B-2F	FR-18B-1F	30	18.0	45/64	50	1 ³ / ₃₂	51	2 ¹ / ₆₄	396	15 ³ / ₆₄	1.5	3.3	0.40	14.1	3/8"	9.5	3/8

The performance figures are at 0.63 MPa (6.3 bar).

Refer to "The Instructions and Warning for Safety Use" enclosed in each tool box.

FUJI AIR TOOLS CO., LTD.

1-14, Kamiji 2-chome, Higashinari-ku,
Osaka, 537-0003 Japan
Tel : (06) 972-2335
Fax : (06) 972-2250



BOLT & NUT SETTERS
SCREW DRIVERS

ABRASIVE TOOLS

DRILLS · TAPPERS

PERCUSSION TOOLS

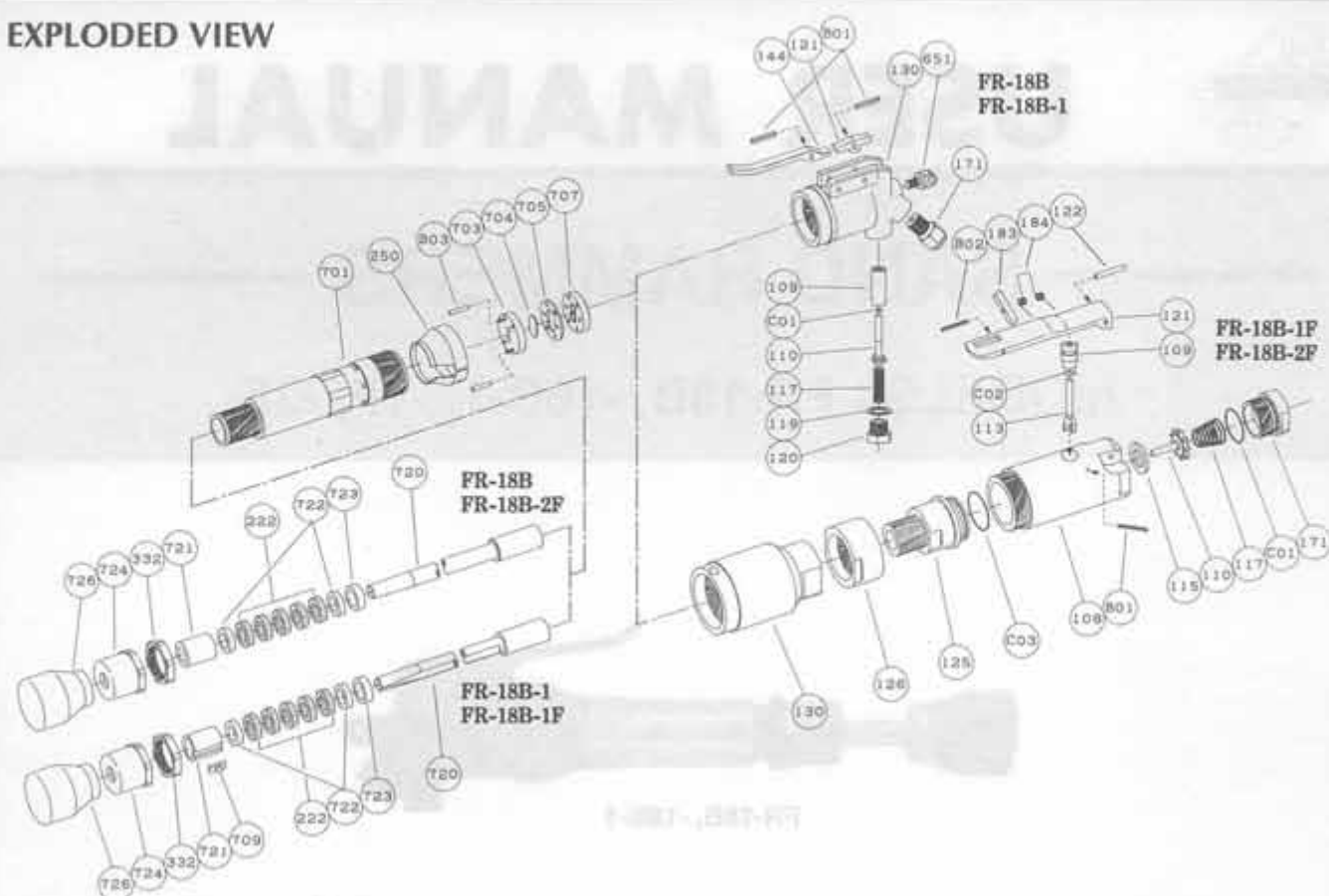
AIR MOTORS & OTHERS

OTHER PRODUCTS



PARTS LIST MODEL : FR-18B, -18B-1, -1F, -2F,

EXPLODED VIEW



PARTS LIST

Index No.	Parts No.	Parts Name	Qt.
FR-18B, -18B-1			
CP No.	R-001005-00	Cap CP	
109	R-001109-00	Throttle Valve Bushing	1
110	R-001110-A	Throttle Valve	1
117	R-001117-00	Throttle Valve Spring	1
119	H-001119-00	T.V. Cover Packing	1
120	H-001120-00	Throttle Valve Cover	1
121	R-001121-00	Throttle Valve Lever	1
130	R-001130-00	Cap < PT >	1
144	R-001144-00	Throttle Valve Lever < B >	1
651	R-001651-00	Hanger	1
B01	SP-420	Spring Pin	2
C01	O-P5	"O" Ring	1
171	IB-202N01	Inlet Bushing < NPT >	1
222	R-001222-00	Felt Ring	5
250	R-001250-00	Exhaust Cover	1
332	R-001332-00	Lock Nut	1
701	R-001701-00	Cylinder	1
703	R-001703-00	Valve Sheet	1
704	R-001704-00	Valve	1
705	R-001705-00	Valve Case	1
707	R-001707-00	Valve Cover	1
720	R-001720-00	Piston	1
721	R-001721-00	Piston Bushing	1
722	R-001722-00	Leather Packing	2
723	R-001723-00	Packing Sheet	1
724	R-001724-00	Grand	1
726	R-1	Rubber Butt	1
B03	P-316	Pin	2
FR-18B-1			
701	R-001701-03	Cylinder	1
709	R-001709-D	Locking Clutch Key	1
720	R-001720-D	Piston	1
721	R-001721-D	Piston Bushing	1
722	R-001722-D	Leather Packing	2
OPTIONAL PART			
171	IB-202001	Inlet Bushing < PT >	1

Index No.	Parts No.	Parts Name	Qt.
FR-18B-1F, -2F			
CP No.	Y-020003-00	Throttle Valve Body CP	
108	Y-020108-00	Throttle Valve Body	1
109	Y-020109-00	Throttle Valve Bushing	1
110	Y-020110-00	Throttle Valve	1
113	Y-020113-00	Throttle Valve Rod	1
115	Y-020115-00	Throttle Valve Sheet	1
117	Y-020117-00	Throttle Valve Spring	1
121	G-144121-02	Throttle Valve Lever	1
122	H-001122-00	Throttle Valve Lever Pin	1
125	Y-020125-00	Throttle Valve Stem	1
126	Y-020126-00	Throttle Valve Stem Nut	1
171	Y-020171-00	Inlet Joint < PT >	1
171	Y-020171-01	Inlet Joint < NPT >	1
183	G-144183-02	Lock Key	1
184	G-144184-00	Lock Spring	1
B01	SP-220	Spring Pin	1
B02	SP-218	Spring Pin	1
C01	O-S22	"O" Ring	1
C02	O-S8	"O" Ring	1
C03	O-S25	"O" Ring	1
130	R-002130-00	Cap	1
222	R-001222-00	Felt Ring	5
250	R-001250-00	Exhaust Cover	1
332	R-001332-00	Lock Nut	1
701	R-001701-03	Cylinder	1
703	R-001703-00	Valve Sheet	1
704	R-001704-00	Valve	1
705	R-001705-00	Valve Case	1
707	R-001707-00	Valve Cover	1
709	R-001709-D	Locking Clutch Key	1
720	R-001720-D	Piston	1
721	R-001721-D	Piston Bushing	1
722	R-001722-D	Leather Packing	2
723	R-001723-00	Packing Sheet	1
724	R-001724-00	Grand	1
726	R-1	Rubber Butt	1
B03	P-316	Pin	2
FR-18B-2F			
701	R-001701-00	Cylinder	1
720	R-001720-00	Piston	1
721	R-001721-00	Piston Bushing	1
722	R-001722-00	Leather Packing	2

□ CP No. denotes the assembled parts comprising of more than 1 pc. of parts.

The related parts are shown in the thick frame.

□ Specify parts number and quantity in ordering.