



USER MANUAL

— CHIPPING & CALKING HAMMERS —

MODELS : FC-1Z-1, -2 & FC-2Z-1, -2



FC-1Z-1, -2



FC-2Z-1, -2

SPECIFICATIONS

Model	Chisel Shank	Chisel Shank Size	Blows Per Second	Piston Diameter		Stroke		Overall Length		Mass		Air Consumption (At Load)		Air Inlet Thread Size		Air Hose Size	
				mm	in	mm	in	mm	in	kg	lb	m ³ /min	ft ³ /min	in	mm	in	
FC-1Z-1	Hex	14.8x60	50	28.5	1 1/8	25	1	301	11 55/64	5.0	11.0	0.60	21.2	PTorNPT 3/8	12.7	1/2	
FC-1Z-2	Round	17.5x60	50	28.5	1 1/8	25	1	301	11 55/64	5.0	11.0	0.60	21.2	PTorNPT 3/8	12.7	1/2	
FC-2Z-1	Hex	14.8x60	42	28.5	1 1/8	51	2	342	13 15/32	5.7	12.5	0.60	21.2	PTorNPT 3/8	12.7	1/2	
FC-2Z-2	Round	17.5x60	42	28.5	1 1/8	51	2	342	13 15/32	5.7	12.5	0.60	21.2	PTorNPT 3/8	12.7	1/2	

*The performance figures are at 0.63MPa (6.3bar).

*Avoid unnecessary idling causing the unexpected tool's troubles.



Refer to instructions and warning for safety use enclosed in each tool box.

FUJI AIR TOOLS CO.,LTD.

1-14, Kamiji 2-chome, Higashinari-ku, Osaka 537-0003, Japan

Tel : (06) 6972-2335

Fax : (06) 6972-2250



BOLT & NUT SETTERS
SCREW DRIVERS

ABRASIVE TOOLS

DRILLS · TAPPERS

PERCUSSION TOOLS

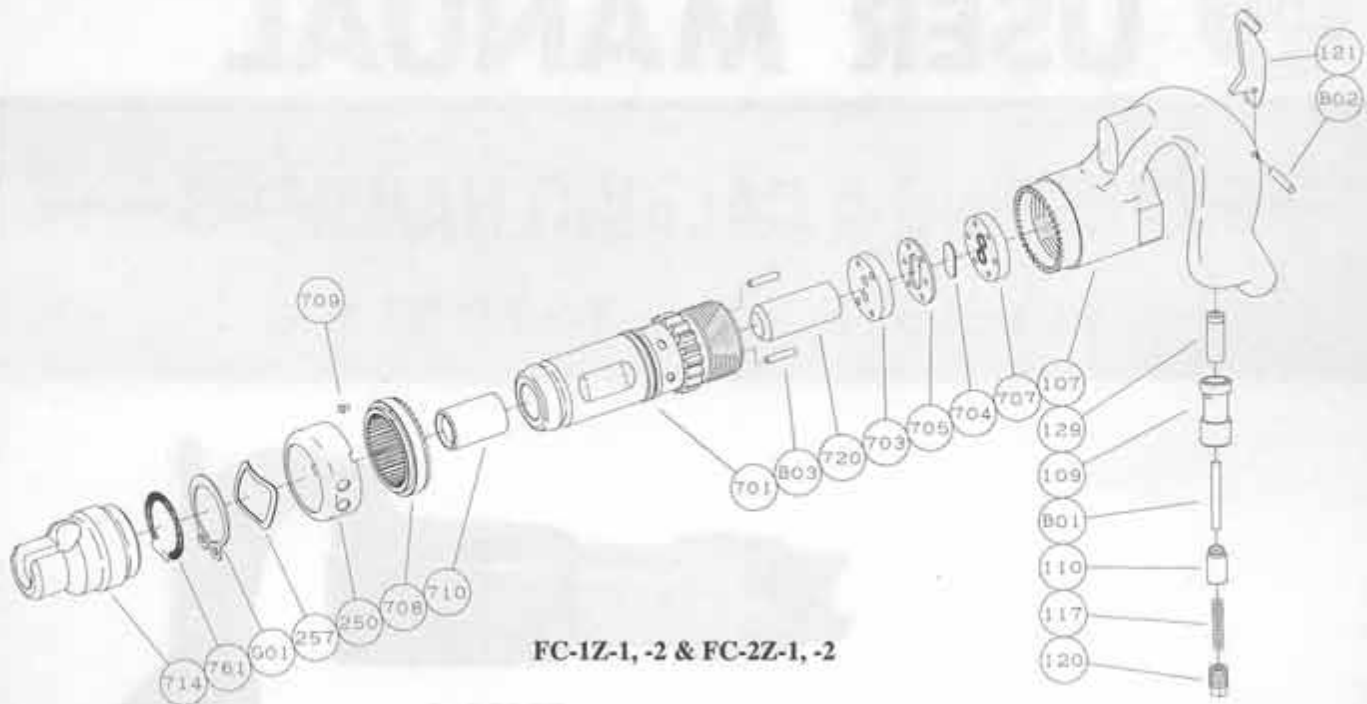
AIR MOTORS & OTHERS

OTHER PRODUCTS

PARTS LIST MODEL :

FC-1Z-1, -2 & FC-2Z-1, -2

EXPLODED VIEW



PARTS LIST

Index No.	Parts No.	Parts Name	Qt.
FC-1Z-1, -2			
Ass'y No.	H-047002-00	Handle Ass'y	
107	H-047107-01	Handle	1
109	H-006109-00	Throttle Valve Bushing	1
110	H-047110-00	Throttle Valve	1
117	H-006117-00	Throttle Valve Spring	1
120	H-006120-00	Throttle Valve Cover	1
121	H-006121-A	Throttle Valve Lever	1
129	H-006129-00	Throttle Valve Rod Bushing	1
B01	NR-638FR	Needle Roller	1
B02	NR-420	Needle Roller	1
250	H-047250-03	Exhaust Cover	1
257	H-047257-00	Washer	1
703	H-006703-00	Valve Sheet	1
704	H-006704-00	Valve	1
705	H-006705-00	Valve Case	1
707	H-006707-00	Valve Cover	1
708	H-047708-00	Locking Clutch	1
709	H-047709-00	Locking Clutch Key	1
714	H-047714-01	Chisel Holder	1
720	H-006720-00	Piston	1
761	H-047761-00	Retainer Spring	1
B03	P-523	Pin	2
G01	SR-S52	Snap Ring	1
FC-1Z-1			
Ass'y No.	H-047007-01	Cylinder Ass'y	
701	H-047701-00	Cylinder	1
710	H-006710-H	Chisel Bushing	1
FC-1Z-2			
Ass'y No.	H-047007-02	Cylinder Ass'y	
701	H-047701-00	Cylinder	1
710	H-006710-00	Chisel Bushing	1

Index No.	Parts No.	Parts Name	Qt.
FC-2Z-1, -2			
Ass'y No.	H-047002-00	Handle Ass'y	
107	H-047107-01	Handle	1
109	H-006109-00	Throttle Valve Bushing	1
110	H-047110-00	Throttle Valve	1
117	H-006117-00	Throttle Valve Spring	1
120	H-006120-00	Throttle Valve Cover	1
121	H-006121-A	Throttle Valve Lever	1
129	H-006129-00	Throttle Valve Rod Bushing	1
B01	NR-638FR	Needle Roller	1
B02	NR-420	Needle Roller	1
250	H-047250-03	Exhaust Cover	1
257	H-047257-00	Washer	1
703	H-006703-00	Valve Sheet	1
704	H-006704-00	Valve	1
705	H-006705-00	Valve Case	1
707	H-006707-00	Valve Cover	1
708	H-047708-00	Locking Clutch	1
709	H-047709-00	Locking Clutch Key	1
714	H-047714-01	Chisel Holder	1
720	H-007720-00	Piston	1
761	H-047761-00	Retainer Spring	1
B03	P-523	Pin	2
G01	SR-S52	Snap Ring	1
FC-2Z-1			
Ass'y No.	H-048007-01	Cylinder Ass'y	
701	H-048701-00	Cylinder	1
710	H-006710-H	Chisel Bushing	1
FC-2Z-2			
Ass'y No.	H-048007-02	Cylinder Ass'y	
701	H-048701-00	Cylinder	1
710	H-006710-00	Chisel Bushing	1

□ Ass'y No. denotes the assembled parts comprising of more than 1pc. of parts. The related parts are shown in the thick frame.
 □ Specify parts number and quantity in ordering.

● Optional Accessory :
 · HN-304001··· Hose Nipple 1.