



# USER MANUAL

## RIVETING HAMMERS

MODELS : B-40,-50,-60,-80,-90



B-40~B-90

### SPECIFICATIONS

Model	Riveting Capacity (Hot)		Blows Per Second (about)	Piston Diameter		Piston Length		Stroke (about)		Shank Size	Overall Length (about)		Mass (about)		Air Consumption Under Load (about)	
	mm	in		mm	in	mm	in	mm	in		mm	in	kg	lb	Nm <sup>3</sup> /min	Nft <sup>3</sup> /min
B-40	15.9	5/8	25.4	27	1 1/16	50.8	2	101	4	30.95×70	387	15 1/4	7.9	17.3	1.00	35.3
B-50	19.0	5/8	23.3	27	1 1/16	57.0	2 1/4	127	5	30.95×70	413	16 1/4	8.3	18.2	1.00	35.3
B-60	22.2	7/8	22.5	27	1 1/16	57.0	2 1/4	152	6	30.95×70	438	17 1/4	8.8	19.3	1.00	35.3
B-80	28.6	2 1/8	17.5	27	1 1/16	63.5	2 1/2	203	8	30.95×70	489	19 1/4	9.8	21.5	1.10	38.8
B-90	31.8	3 1/4	15.3	27	1 1/16	76.0	3	228	9	30.95×70	514	20 1/4	10.2	22.4	1.20	42.4

※ 3/8" Air Inlet Thread Size, 12.7mm (1/2") Air Hose Size.

The performance figures are at 0.63MPa (6.3bar).

⚠ Refer to "The Instructions and Warning for Safety Use" enclosed in each tool box.

**FUJI AIR TOOLS CO., LTD.**

1-14, Kamiji 2-chome, Higashinanku, Osaka, 537 Japan  
 Tel : (06) 972-2335  
 Fax : (06) 972-2250



BOLT & NUT SETTERS  
SCREW DRIVERS

ABRASIVE TOOLS

DRILL · STAPPERS

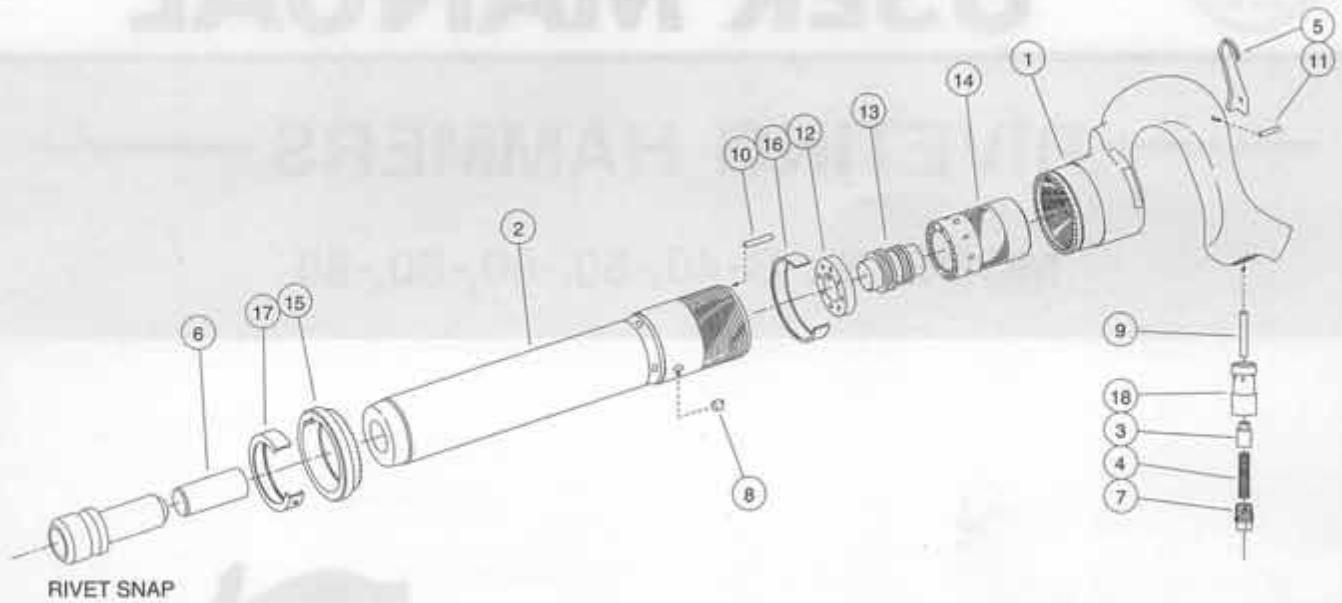
PERCUSSION TOOLS

AIR MOTORS & OTHERS

OTHER PRODUCTS

# PARTS LIST MODEL: B-40,-50,-60,-80,-90

## EXPLODED VIEW



B-40~B-90

## PARTS LIST

Parts No.	Parts Name	Qt.	Parts No.	Parts Name	Qt.
1	Handle	1	10	Valve Knock	1
2	Cylinder	1	11	Lever Pin	1
3	Throttle Valve	1	12	Valve Seat	1
4	Throttle Valve Spring	1	13	Valve	1
5	Lever	1	14	Valve Case	1
6	Piston	1	15	Clutch	1
7	Throttle Valve Spring Cover	1	16	Clutch Band	1
8	Clutch Key	1	17	Exhaust Cover	1
9	Throttle Pin	1	18	Throttle Valve Bushing	1

Specify parts number and quantity in ordering.

All parts are common in all models B-40~B-90 except Index No.2 Cylinder and No.6 Piston.  
Specify model number additionally when ordering these two parts.

### Standard Button-Head Rivet Snaps for B-40 to B-90

Item No.			SNAP-50	SNAP-51	SNAP-52	SNAP-53	SNAP-54	SNAP-55
Button Head Rivet	Rivet Diameter	mm or inch	10 3/8	13 1/2	16 5/8	19 3/4	22 7/8	25 1
	Rivet Snap Dimensions (mm)	D	15.8	20.5	25.5	29.5	34.5	39.5
H		6.5	8.3	10.2	12.5	14.4	16.2	

Other sizes are available on request.

Please specify the dimensions of D and H when inquiring.

### RIVET SNAP

