

FUJI



AIR TAPPER

Model FT-6P-1 New Type Air Tapper is used for steel tapping work in boring stock, ship building and other tapping work. This New Type Air Tapper is provided with a Double Acting Throttle Valve System (Two-Stage Throttle Valve System) which prevents slow start. This Double Acting Throttle Valve system gives the same characteristics as IW-400 type.

MODEL FT-6P-1

CAPACITY (TAPPING) : 8 MM (5/16")

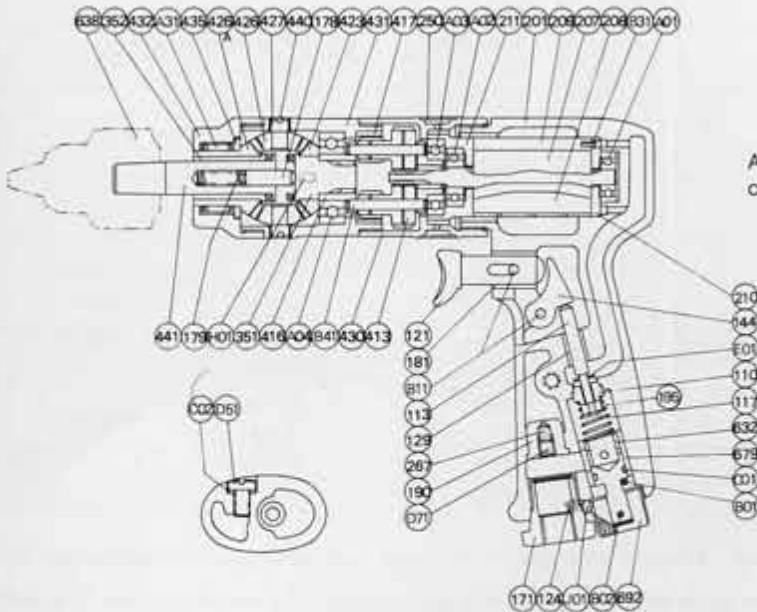


Oil Plug (Reverse side)
After each 8 hours of operation, unless an air line lubricator is used, replenish the supply of oil in machine having an oil chamber. (Unscrew oil chamber plug.)

FT-6P-1

Air Hose Nipple or Coupler can be attached the tool.

Built-in Regulator Adjustment Torque.



LUBRICATION

● Oil Plug

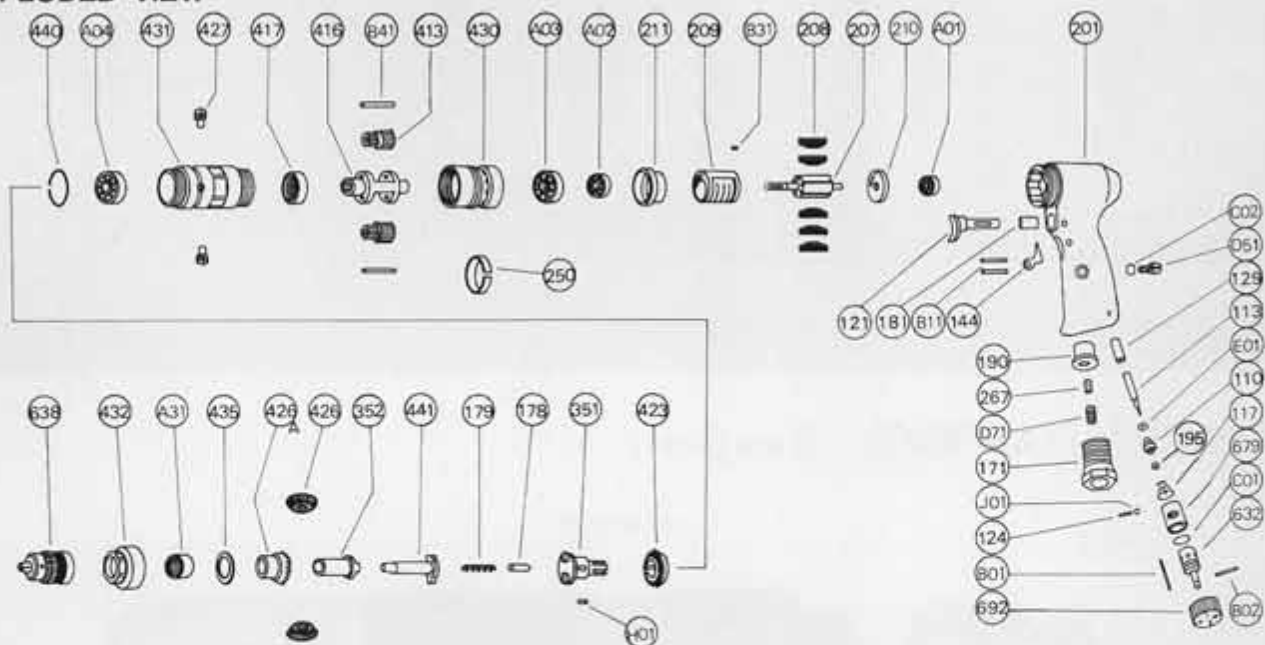
After each 8 hours of operation, replenish the oil chamber with oil unless an air line lubricator is used.

SPECIFICATIONS

| Model | Tapping Capacity (Guidance) | | | | Free Speed (about) (R.P.M.) | | Type and Size of Spindle Taper $\frac{1}{8}$ | Chuck Capacity mm | Overall Length (about) | | Weight (about) | | Max. Air Consumption (about) | | Air Inlet Thread Size PT or NPT | Air Hose Size | | |
|---------|-----------------------------|---------------|----------|----------------|-----------------------------|-------|-------------------------------------------------|----------------------|------------------------|------------------|----------------|-----|------------------------------|---------------------|------------------------------------|----------------------|----------------|----|
| | Steel | | Aluminum | | R | L | | | mm | mm | in | kg | lb | m ³ /min | | ft ³ /min | mm | in |
| | mm | in | mm | in | | | | | | | | | | | | | | |
| FT-6P-1 | 6 | $\frac{1}{4}$ | 8 | $\frac{5}{16}$ | 1,000 | 1,000 | J.T. #1 | 8 | 232 | 9 $\frac{9}{64}$ | 1.9 | 4.1 | 0.40 | 14.1 | $\frac{1}{4}$ | 8 | $\frac{5}{16}$ | |

- The recommended air pressure is 85 lb/in² (6 kg/cm²).
- Specifications, parts and designs in this leaflet are subject to change without notice.
- **CAUTION:** Handle with care to avoid dropping and bumping.

EXPLODED VIEW



PART LIST : FT-6P-1

| Index No. | Part No. | Part Name |
|---------------|--------------------|------------------------------|
| CP No. | T-001006-00 | Housing CP |
| 117 | W-017117-01 | Throttle Valve Spring |
| 121 | W-017121-A | Throttle Valve Lever |
| 124 | G-044124-00 | Knock Spring |
| 129 | W-017129-00 | Throttle Valve Rod Bushing |
| 144 | W-017144-00 | Throttle Valve Lever B |
| 171 | W-017171-02 | Inlet Bushing PT |
| 171 | W-017171-01 | Inlet Bushing NPT |
| 181 | W-017181-01 | Bushing B |
| 190 | W-017190-00 | Filer Metal |
| 201 | T-001201-01 | Housing |
| 267 | W-017267-00 | Oil Plug Felt |
| 632 | W-017632-00 | Regulator |
| 679 | W-017679-00 | Regulator Bushing |
| 692 | W-017692-01 | Regulator Knob |
| B01 | SP-322 | Spring Pin |
| B02 | SP-318 | Spring Pin |
| B11 | NR-422 | Needle Roller (2) |
| C01 | O-P9 | "O" Ring |
| C02 | O-P6 | "O" Ring |
| D51 | S-610F | Round Small Screw |
| D71 | SS-66 | Set Screw |
| E01 | PW-3 | Plain Washer |
| J01 | B-4 | Steel Ball |
| CP No. | W-017008-00 | Throttle Valve Rod CP |
| 110 | W-017110-01 | Throttle Valve |
| 113 | W-017113-02 | Throttle Valve Rod |
| 195 | W-017195-00 | Sub Throttle Valve |
| 178 | T-001178-00 | Plunger |
| 179 | T-001179-00 | Plunger Spring |
| 207 | A-001207-A | Rotor |

| Index No. | Part No. | Part Name |
|-----------|-------------|------------------------|
| 208 | G-013208-00 | Rotor Blade (4) |
| 209 | G-011209-01 | Cylinder |
| (B31) | SP-26 | Spring Pin |
| 210 | D-002210-02 | Cylinder Upper Plate |
| 211 | D-001211-00 | Cylinder Lower Plate |
| 250 | M-002250-00 | Exhaust Cover |
| 351 | T-001351-00 | Clutch |
| 352 | T-001352-00 | Clutch B |
| 413 | T-001413-00 | No.1 Planet Gear (2) |
| 416 | T-001416-00 | No.1 Planet Gear Frame |
| 417 | T-001417-00 | No.1 Internal Gear |
| 423 | T-001423-00 | Bevel Pinion |
| 426 | T-001426-00 | Bevel Gear (2) |
| 426A | T-001426-A | Bevel Gear |
| 427 | T-001427-00 | Bevel Gear Spindle (2) |
| 430 | T-001430-00 | No.1 Gear Case |
| 431 | T-001431-00 | No.2 Gear Case |
| 432 | T-001432-00 | Gear Case Cover |
| 435 | T-001435-00 | Thrust Washer |
| 440 | T-001440-00 | Ring |
| 441 | T-001441-01 | Spindle B |
| 638 | DCK-6J | Drill Chuck |
| | DCK-6.5H | Chuck Handle |
| A01 | BB-626 | Ball Bearing |
| A02 | BB-608 | Ball Bearing |
| A03 | BB-EE4 | Ball Bearing |
| A04 | BB-6003 | Ball Bearing |
| A31 | NB-SC138 | Needle Bearing |
| B41 | NR-431 | Needle Roller (2) |
| H01 | K-336.5 | Key |

- The letters CP in the Index No. column represent assembled parts. The parts which form CP are shown in the thick square line and their part Nos. are indented by two letters.
- The parenthesized part is supplied together when the part which is shown above the parenthesized part is ordered. The parenthesized part is available separately when it is ordered.
- The parenthesized figure in the Part Name column shows the number of required quantity.



FUJI AIR TOOLS CO., LTD.

1-14, Kamiji 2-chome, Higashinari-ku, Osaka, 537 Japan
 Cable Address: "FUJI AIR TOOLS" OSAKA
 Telex: 5298510 FUJIAT J
 Telefax: (06) 972-2250
 Telephone: (06) 972-2335 (Overseas Dept)
 (06) 972-2331 (Key Number)