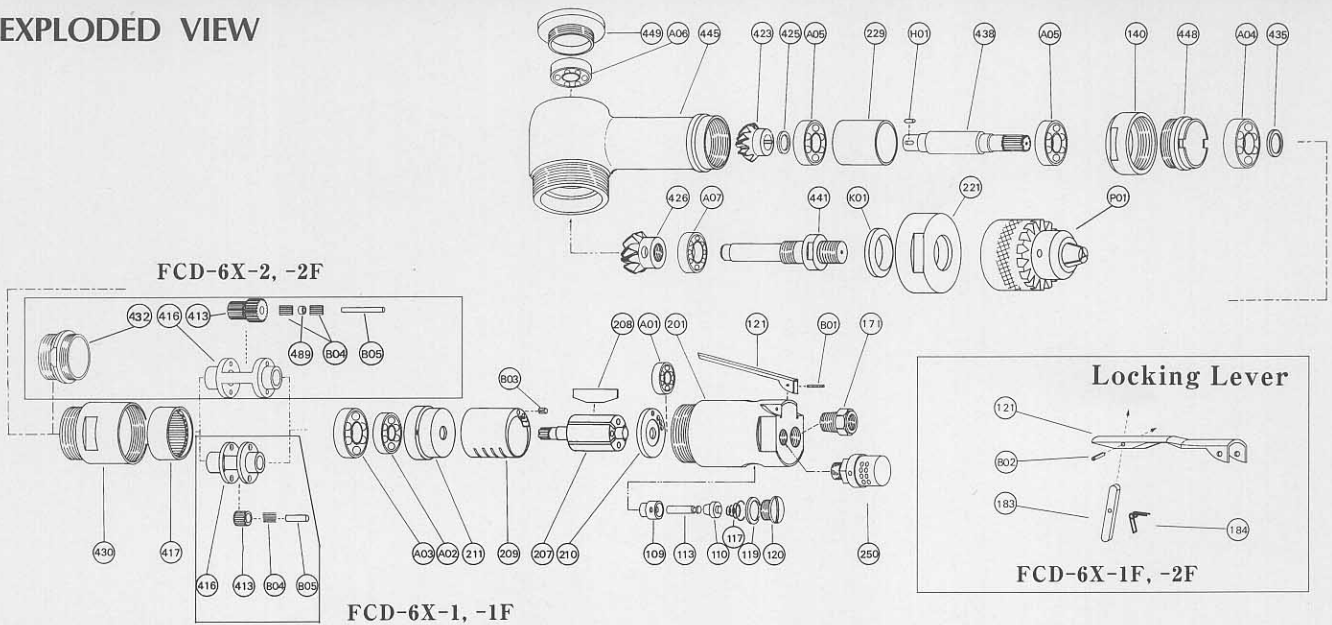


EXPLODED VIEW



PARTS LIST

Index No.	Parts No.		Parts Name	Qt.
	FCD-6X-1,-2	FCD-6X-1F,-2F		
CP No.	D-085006-00	D-085006-02	Housing CP	
201	D-085006-50	○	Housing	1
(109)	G-028109-00	○	Throttle Valve Bushing	1
117	D-001117-00	○	Throttle Valve Spring	1
119	G-028119-00	○	T.V. Cover Packing	1
120	G-028120-00	○	Throttle Valve Cover	1
121	W-029121-00	—	Throttle Valve Lever	1
171	IB-202000	○	Inlet Bushing (PT)	1
171	IB-202N00	○	Inlet Bushing (NPT)	1
250	W-183250-02	○	Exhaust Cover	1
B01	SP-325	○	Spring Pin	1
CP No.	G-028008-00	○	Throttle Valve Rod CP	
110	H-001110-02	○	Throttle Valve	1
113	G-028113-00	○	Throttle Valve Rod	1
CP No.	—	G-201019-00	Locking Lever CP	
121	—	G-201121-00	Throttle Valve Lever	1
183	—	G-144183-02	Lock Key	1
184	—	G-144184-00	Lock Spring	1
B02	—	SP-218	Spring Pin	1

Index No.	Parts No.		Parts Name	Qt.
	FCD-6X-1,-1F	FCD-6X-2,-2F		
140	D-024140-00	○	Cup Nut	1
207	D-001207-00	○	Rotor	1
208	W-100208-00	○	Rotor Blade	4
209	D-001209-00	○	Cylinder	1
(B03)	SP-26	○	Spring Pin	1
210	D-002210-02	○	Cylinder Upper Plate	1
211	D-001211-00	○	Cylinder Lower Plate	1
221	D-024221-00	○	Spindle Bearing Cover	1
229	D-024229-00	○	Bearing Spacer	1
413	D-001413-00	D-076413-00	No.1 Planet Gear	2
(B04)	NR-110.5	—	Needle Roller	30
(B04)	—	NR-19.5	Needle Roller	48
416	A-054416-00	D-076416-00	No.1 Planet Gear Frame	1
417	D-001417-00	M-002417-00	No.1 Internal Gear	2
423	D-024423-00	D-076423-00	Bevel Pinion	1
425	D-025425-00	○	Bevel Pinion Washer	1
426	D-024426-00	D-076426-00	Bevel Gear	1
430	D-085430-00	D-086430-00	No.1 Gear Case	1
432	—	D-024432-00	Gear Case Cover	1
435	D-001435-00	○	Thrust Washer	1
438	D-024438-00	○	Spindle <A>	1
441	D-024441-A	○	Spindle 	1
445	D-024445-00	○	Spindle Case	1
448	D-024448-00	○	Spindle Case Flange	1
449	D-024449-00	○	Spindle Case Cover	1
489	—	A-091489-00	Needle Roller Spacer	2
A01	BB-626	○	Ball Bearing	1
A02	BB-608	○	Ball Bearing	1
A03	BB-EE4	○	Ball Bearing	1
A04	BB-EE4	○	Ball Bearing	1
A05	BB-6000	○	Ball Bearing	2
A06	BB-608	○	Ball Bearing	1
A07	BB-6201	○	Ball Bearing	1
B05	NR-419	NR-331	Needle Roller	2
D01	SS-44K	○	Set Screw	1
H01	K-3310	○	Key	1
K01	OS-ZF5	○	Oil Seal	1
P01	DCK-6.5	DCK-8	Drill Chuck	1

- CP No. denotes the assembled parts comprising of more than 1 pc. of parts. The related parts are shown in the thick frame.
- mark in the parts No. space denotes the same parts as used in the left-side model.
- #201, 209 and 413 are supplied together with parts shown in ().
- Specify parts number and quantity in ordering.

■ Standard Accessory : 1 pc. Open-End Wrench

MANUFACTURER:
FUJI AIR TOOLS CO., LTD.

1-14, Kamiji 2-chome, Higashinari-ku, Osaka 537, Japan
Tel. : (06) 972-2335 (Overseas Dept) Fax : (06) 972-2250