



# USER MANUAL

## CORNER DRILLS

MODELS : FCD-50R-11, -11S



### SPECIFICATIONS

Model	Capacity (Guidance)				Stall Torque			Free Speed	Socket	Side to Center		Feed Length		Overall Length		Mass		Max Air Consumption		Air Hose Size	
	Drilling		Reaming-Tapping		N·m	kgf·m	lbf·ft			rpm	M.T.#	mm	in	mm	in	mm	in	kg	lb	Nm <sup>3</sup> /min	Nl <sup>3</sup> /min
	mm	in	mm	in																	
FCD-50R-11	50	2	50	2	392	40	289.3	140	4	41	1 <sup>38</sup> / <sub>64</sub>	58	2 <sup>5</sup> / <sub>16</sub>	595	22 <sup>27</sup> / <sub>64</sub>	16	35.2	1.8	63.5	19	3/4
FCD-50R-11S	50	2	50	2	392	40	289.3	140	4	41	1 <sup>38</sup> / <sub>64</sub>	58	2 <sup>5</sup> / <sub>16</sub>	595	22 <sup>27</sup> / <sub>64</sub>	16	35.2	1.8	63.5	19	3/4

○1/2" air inlet thread size.

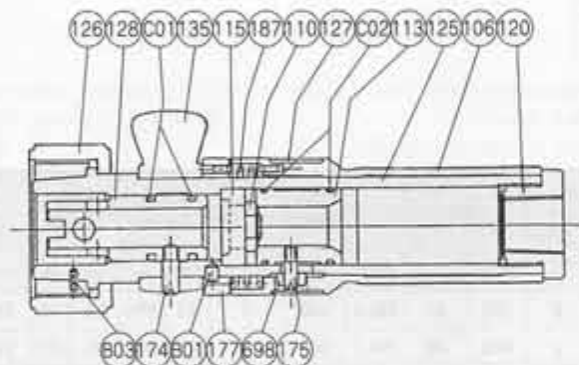
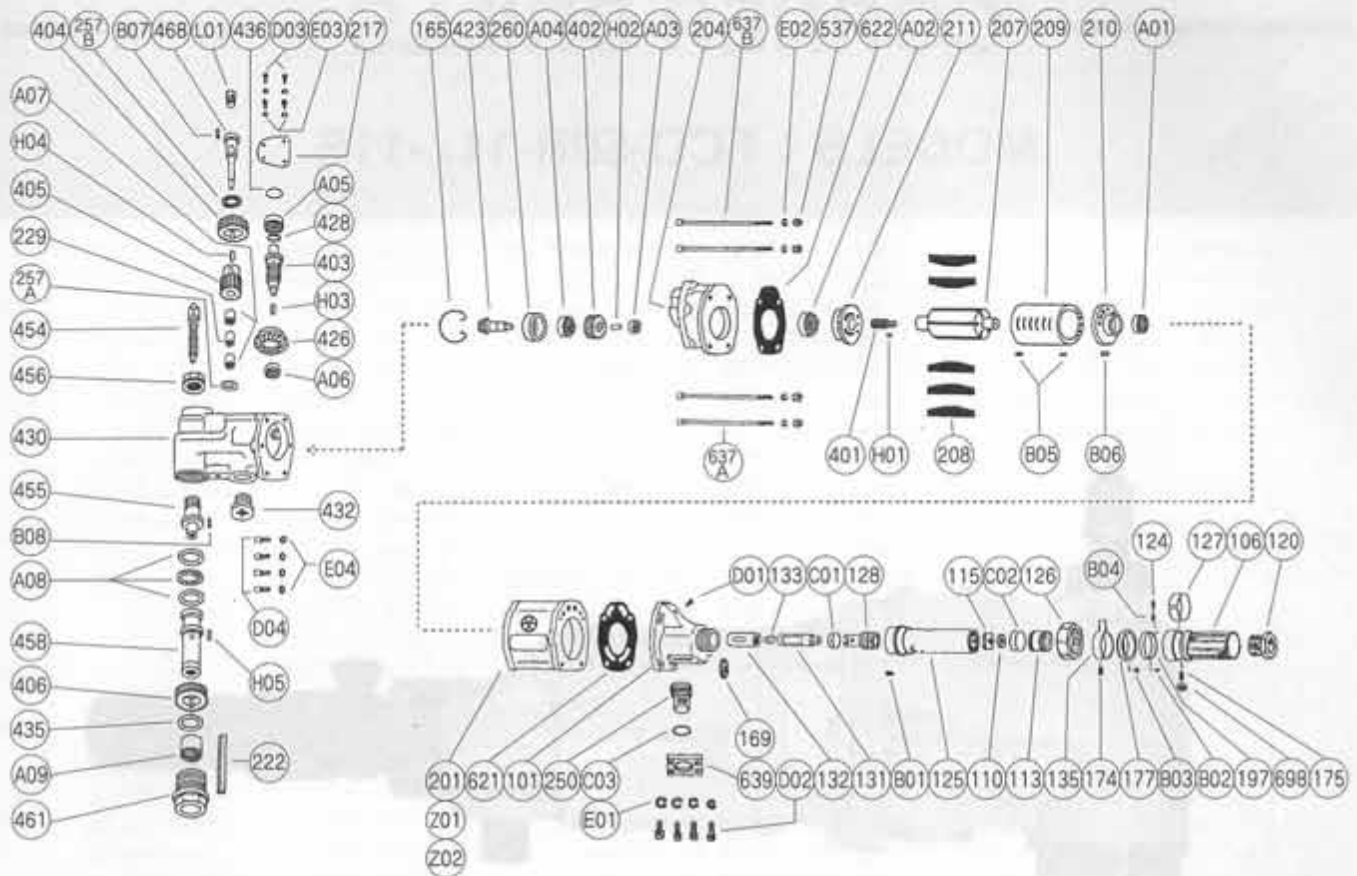
○The performance figures are at 0.63 MPa (6.3 bar).

○The models with "S" at the end of model names are Self Return Rolling Throttle types.



Refer to "The Instructions and Warning for Safety Use" enclosed in each tool box.

# USER MANUAL



Self Return Roll Handle

# PARTS LIST MODEL: FCD-50R-11, -11S

Index No.	Parts No.	Parts Name	Qt.	Index No.	Parts No.	Parts Name	Qt.	Index No.	Parts No.	Parts Name	Qt.
<b>FCD-50R-11 Roll Handle Type</b>				175	D-029175-01	Small Screw <B>	1	432	D-030432-00	Gear Case Cover	1
<b>FCD-50R-11S Self Return Roll Handle Type</b>				177	D-029177-03	Throttle Handle Step	1	435	D-114435-00	Thrust Washer	1
CP No.	D-096004-00	Throttle Valve Stem CP<R>		187	D-029187-00	Throttle Valve Handle Spring	1	436	D-029436-00	Bearing Holder	1
106	D-029106-03	Throttle Valve Handle	1	698	D-029698-00	Guide Roller	1	454	D-066454-00	Feed Screw	1
110	D-029110-01	Throttle Valve	1	B03	NR-56	Needle Roller	1	455	D-066455-00	Feed Sleeve	1
113	D-029113-01	Throttle Valve Rod	1	C01	O-14	"O" Ring	2	456	D-066456-00	Feed Sleeve Nut	1
115	D-029115-01	Throttle Valve Sheet	1	C02	O-S24	"O" Ring	2	458	D-114458-00	MT. Socket	1
120	D-029120-03	Throttle Valve Cover <PT>	1	<b>All of the above parts can be commonly used on all the models.</b>				461	D-114461-00	Socket Nut	1
120	D-029120-04	Throttle Valve Cover <NPT>	1	<b>FCD-50R-11, -11S</b>				468	D-030468-00	No.2 Gear Spindle	1
124	G-005124-00	Knock Spring	1	CP No.	D-098001-51	Hosing Cover Semi CP		537	W-086537-00	Hexagon Nut	4
125	D-015125-03	Throttle Valve Stem	1	101	D-098101-01	Hosing Cover	1	621	D-029621-00	Packing <A>	1
(B01)	SP-310	Spring Pin	1	132	D-029132-00	Reverse Valve Bushing	1	622	D-029622-00	Packing <B>	1
126	D-015126-00	Throttle Valve Stem Nut	1	169	D-098169-00	Reverse Valve Washer	1	637A	D-029637-00	Half -Cut Head Bolt	2
127	D-029127-00	Throttle Valve Handle Band	1	D01	S-610RS	Screw	1	637B	D-029637-01	Half -Cut Head Bolt	2
128	D-015128-01	Reverse Valve Rod	1	131	D-029131-00	Reverse Valve	1	639	D-098639-00	Exhaust Cover Holder	1
135	D-029135-01	Reverse Valve Lever	1	133	D-029133-00	Reverse Valve Sheet	1	A01	BB-6203	Ball Bearing	1
174	D-029174-01	Small Screw	1	165	D-029165-00	Stop Ring	1	A02	BB-6005	Ball Bearing	1
175	D-029175-01	Small Screw <B>	1	201	D-098201-00	Housing	1	A03	BB-629	Ball Bearing	1
177	D-029177-03	Throttle Handle Step	1	204	D-030204-00	Hosing Lower Cover	1	A04	BB-6203	Ball Bearing	1
197	D-098197-00	Handle Bushing	1	207	D-029207-00	Rotor	1	A05	BB-6202	Ball Bearing	1
(B02)	SP-28	Spring Pin	1	208	D-029208-00	Rotor Blade	5	A06	BB-6203	Ball Bearing	1
698	D-029698-00	Guide Roller	1	209	D-029209-00	Cylinder	1	A07	NB-SC1212	Needle Bearing	2
B03	NR-56	Needle Roller	1	(B05)	SP-312	Spring Pin	2	A08	BB-2906	Thrust Bearing	1
B04	NR-35FR	Needle Roller	1	210	D-029210-00	Cylinder Upper Plate	1	A09	NB-NK45/20R	Needle Bearing	2
C01	O-14	"O" Ring	2	211	D-029211-00	Cylinder Lower Plate	1	B06	P-67	Pin	1
C02	O-S24	"O" Ring	2	217	D-030217-00	Bearing Cover	1	B07	SP-410	Spring Pin	1
<b>FCD-50R-11S Self Return Roll Handle Type</b>				222	D-030222-00	Felt Ring	1	B08	SP-410	Spring Pin	1
CP No.	D-096004-01	Throttle Valve Stem CP<S>		229	D-030229-00	Bearing Spacer	1	C03	O-P22A	"O" Ring	1
106	D-029106-03	Throttle Valve Handle	1	250	D-098250-00	Exhaust Cover	1	D02	CS-615	Cap Screw	4
110	D-029110-01	Throttle Valve	1	257A	D-033257-00	Washer	1	D03	S-610R	Screw	4
113	D-029113-01	Throttle Valve Rod	1	257B	D-030257-00	Washer	1	D04	CS-622	Cap Screw	6
115	D-029115-01	Throttle Valve Sheet	1	260	D-029260-00	Bearing Case	1	E01	SW-6	Spring Washer	4
120	D-029120-03	Throttle Valve Cover <PT>	1	401	D-071401-00	No.1 Pinion	1	E02	SW-6	Spring Washer	4
120	D-029120-04	Throttle Valve Cover <NPT>	1	402	D-071402-00	No.1 Gear	1	E03	SW-6	Spring Washer	4
125	D-015125-03	Throttle Valve Stem	1	403	D-071403-00	No.2 Pinion	1	E04	SW-6	Spring Washer	6
(B01)	SP-310	Spring Pin	1	404	D-070404-00	No.2 Gear	1	H01	K-43.515	Key	1
126	D-015126-00	Throttle Valve Stem Nut	1	405	D-070405-00	No.3 Pinion	1	H02	K-4414.5	Key	1
127	D-029127-00	Throttle Valve Handle Band	1	406	D-070406-00	No.3 Gear	1	H03	K-5513	Key	1
128	D-015128-01	Reverse Valve Rod	1	423	D-030423-00	Bevel Pinion	1	H04	K-5518	Key	1
135	D-029135-01	Reverse Valve Lever	1	426	D-030426-00	Bevel Gear	1	H05	K-10620	Key	1
174	D-029174-01	Small Screw	1	430	D-066430-00	No.1 Gear Case	1	L01	PL-1/4	Plug	1
								Z01	NP-5003	Name Plate	1
								Z02	NPN-0×3.2	Screw Rivet	2

CP No. denotes the assembled parts comprising of more than 1 pc. of parts.

Specify parts number and quantity in ordering.

The related parts are shown in the thick frame.

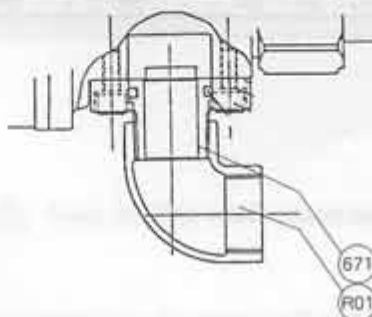
Standard Accessory : F-706 .....6mm Hex. Pin Wrench 1.

#125, 197 and 209 are supplied together with parts shown in ( ).

SJ-31..... Swivel Hose Nipple 1.

## OPTIONAL PART LIST : EXHAUST HOSE JOINT

Index No.	Parts No.	Parts Name	Qt.
671	D-097671-00	Exhaust Cover Joint	1
R01	JE-3/4	Elbow	1



OPTIONAL PART

EXHAUST HOSE  
JOINT

Accessories			Accessories			Accessories		
Part No.	Description	QTY	Part No.	Description	QTY	Part No.	Description	QTY
01000001	...	1	01000002	...	1	01000003	...	1
01000004	...	1	01000005	...	1	01000006	...	1
01000007	...	1	01000008	...	1	01000009	...	1
01000010	...	1	01000011	...	1	01000012	...	1
01000013	...	1	01000014	...	1	01000015	...	1
01000016	...	1	01000017	...	1	01000018	...	1
01000019	...	1	01000020	...	1	01000021	...	1
01000022	...	1	01000023	...	1	01000024	...	1
01000025	...	1	01000026	...	1	01000027	...	1
01000028	...	1	01000029	...	1	01000030	...	1
01000031	...	1	01000032	...	1	01000033	...	1
01000034	...	1	01000035	...	1	01000036	...	1
01000037	...	1	01000038	...	1	01000039	...	1
01000040	...	1	01000041	...	1	01000042	...	1
01000043	...	1	01000044	...	1	01000045	...	1
01000046	...	1	01000047	...	1	01000048	...	1
01000049	...	1	01000050	...	1	01000051	...	1
01000052	...	1	01000053	...	1	01000054	...	1
01000055	...	1	01000056	...	1	01000057	...	1
01000058	...	1	01000059	...	1	01000060	...	1
01000061	...	1	01000062	...	1	01000063	...	1
01000064	...	1	01000065	...	1	01000066	...	1
01000067	...	1	01000068	...	1	01000069	...	1
01000070	...	1	01000071	...	1	01000072	...	1
01000073	...	1	01000074	...	1	01000075	...	1
01000076	...	1	01000077	...	1	01000078	...	1
01000079	...	1	01000080	...	1	01000081	...	1
01000082	...	1	01000083	...	1	01000084	...	1
01000085	...	1	01000086	...	1	01000087	...	1
01000088	...	1	01000089	...	1	01000090	...	1
01000091	...	1	01000092	...	1	01000093	...	1
01000094	...	1	01000095	...	1	01000096	...	1
01000097	...	1	01000098	...	1	01000099	...	1
01000100	...	1	01000101	...	1	01000102	...	1
01000103	...	1	01000104	...	1	01000105	...	1
01000106	...	1	01000107	...	1	01000108	...	1
01000109	...	1	01000110	...	1	01000111	...	1
01000112	...	1	01000113	...	1	01000114	...	1
01000115	...	1	01000116	...	1	01000117	...	1
01000118	...	1	01000119	...	1	01000120	...	1
01000121	...	1	01000122	...	1	01000123	...	1
01000124	...	1	01000125	...	1	01000126	...	1
01000127	...	1	01000128	...	1	01000129	...	1
01000130	...	1	01000131	...	1	01000132	...	1
01000133	...	1	01000134	...	1	01000135	...	1
01000136	...	1	01000137	...	1	01000138	...	1
01000139	...	1	01000140	...	1	01000141	...	1
01000142	...	1	01000143	...	1	01000144	...	1
01000145	...	1	01000146	...	1	01000147	...	1
01000148	...	1	01000149	...	1	01000150	...	1
01000151	...	1	01000152	...	1	01000153	...	1
01000154	...	1	01000155	...	1	01000156	...	1
01000157	...	1	01000158	...	1	01000159	...	1
01000160	...	1	01000161	...	1	01000162	...	1
01000163	...	1	01000164	...	1	01000165	...	1
01000166	...	1	01000167	...	1	01000168	...	1
01000169	...	1	01000170	...	1	01000171	...	1
01000172	...	1	01000173	...	1	01000174	...	1
01000175	...	1	01000176	...	1	01000177	...	1
01000178	...	1	01000179	...	1	01000180	...	1
01000181	...	1	01000182	...	1	01000183	...	1
01000184	...	1	01000185	...	1	01000186	...	1
01000187	...	1	01000188	...	1	01000189	...	1
01000190	...	1	01000191	...	1	01000192	...	1
01000193	...	1	01000194	...	1	01000195	...	1
01000196	...	1	01000197	...	1	01000198	...	1
01000199	...	1	01000200	...	1	01000201	...	1

OPTIONAL PART LIST : EXHAUST WORK LIGHT



# FUJI AIR TOOLS CO., LTD.

2-1-14 Kamiji, Higashinari-ku, Osaka, 537-0003 Japan

Tel : (06) 6972-2335  
 Fax : (06) 6972-2250  
 E-mail : overseas@fujiair.co.jp

