



USER MANUAL

DISC SANDER

MODELS : FG-5PX-1



FG-5PX-1

SPECIFICATIONS

Model	Max. Dia Sanding Disc		Rotational Frequency	Height		Overall Length		Mass		Max. Air Consumption		Air Inlet Thread Size		Air Hose Size	
	mm	in		mm	in	mm	in	kg	lb	m ³ /min	ft ³ /min	in	mm	in	
FG-5PX-1	125 × - × 22.2	5 × - × 7/8	12,000	170	6 11/16	108	4 1/4	1.0	2.2	0.50	17.7	PT or NPT 1/4	9.5	3/8	

The performance figures are at 0.63MPa (6.3bar).

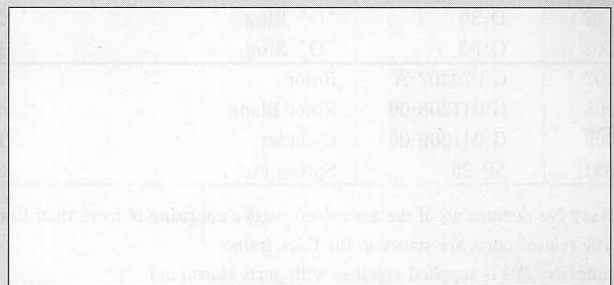
⚠ Refer to "The Instructions and Warning for Safety Use" enclosed in each tool box.

FUJI AIR TOOLS CO., LTD.

2-1-14 Kamiji, Higashinari-ku, Osaka, 537-0003 Japan

Tel : (06) 6972-2335

Fax : (06) 6972-2250



BOLT & NUT SETTERS
SCREW DRIVERS

ABRASIVE TOOLS

DRILLS · TAPPERS

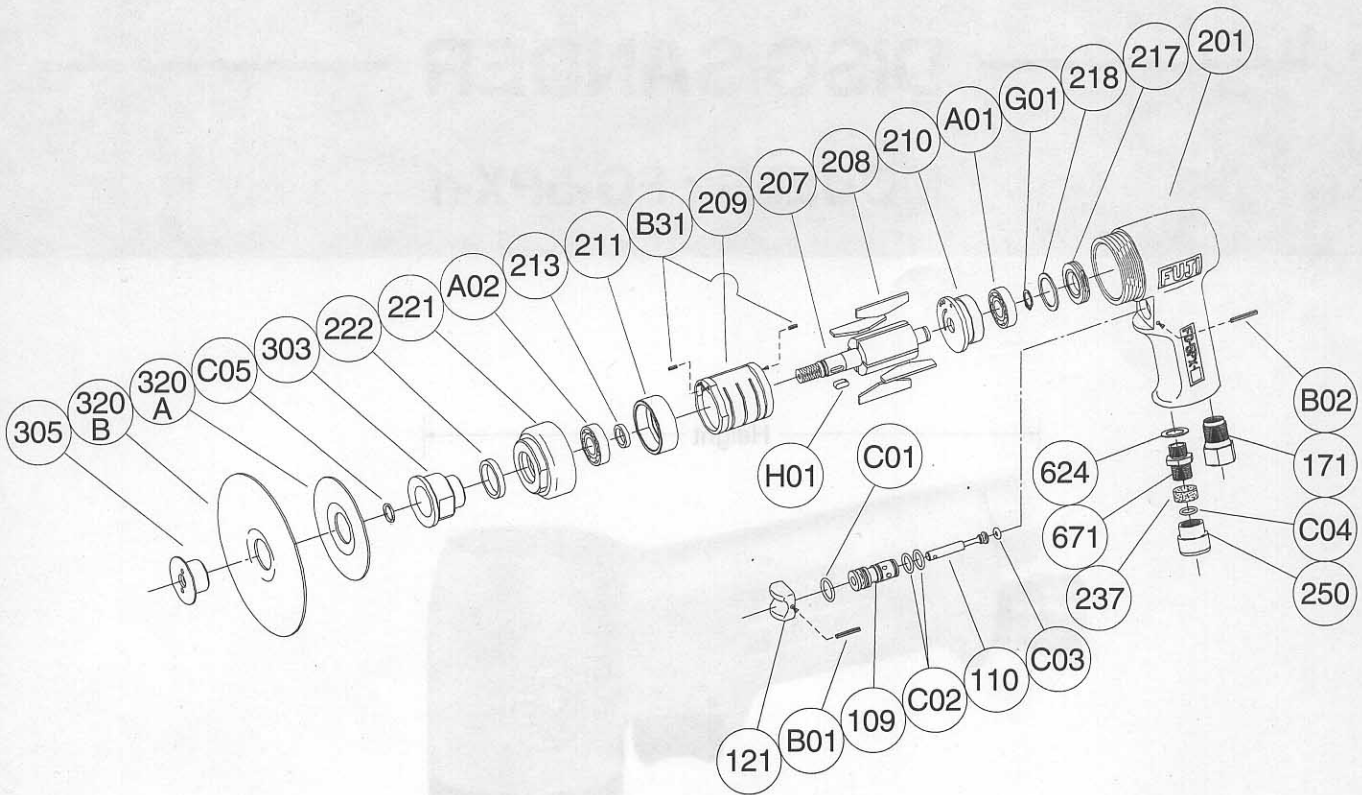
PERCUSSION TOOLS

AIR MOTORS & OTHERS

OTHER PRODUCTS

PARTS LIST MODEL: FG-5PX-1

EXPLODED VIEW



PARTS LIST

Index No.	Parts No.	Parts Name	Qt.	Index No.	Parts No.	Parts Name	Qt.
Ass'y No.	G-149006-00	Housing Ass'y (PT)		210	G-079210-01	Cylinder Upper Plate	1
Ass'y No.	G-149006-02	Housing Ass'y (NPT)		211	G-079211-01	Cylinder Lower Plate	1
109	W-151109-00	Throttle Valve Rod Bushing	1	213	G-079213-A	Adjusting Collar	1
110	W-151110-00	Throttle Valve	1	217	A-023217-A	Bearing Cover	1
121	W-125121-00	Throttle Valve Lever	1	218	A-023218-00	Packing	1
171	W-025171-00	Inlet Joint (PT)	1	221	G-149221-00	Spindle Bearing Cover	1
	W-025171-01	Inlet Joint (NPT)	1	222	A-006222-00	Felt Ring	1
201	G-149201-00	Housing	1	237	D-072237-00	Muffler Pad	1
624	D-072624-00	Packing (D)	1	250	G-149250-00	Exhaust Cover	1
671	D-072671-00	Exhaust Cover Joint	1	303	G-097303-00	Wheel Flange (A)	1
B01	SP-2.518	Spring Pin	1	305	G-079305-00	Paper Holder Flange	1
B02	SP-2.520	Spring Pin	1	320A	FP-3-1	Paper Backing Pad	1
C01	O-S11.2	"O" Ring	1	320B	FP-5-1	Paper Backing Pad	1
C02	O-S9	"O" Ring	2	A01	BB-6000	Ball Bearing	1
C03	O-P3	"O" Ring	1	A02	BB-6201	Ball Bearing	1
207	G-079207-A	Rotor	1	C04	O-P10	"O" Ring	1
208	G-041208-00	Rotor Blade	4	C05	O-P9	"O" Ring	1
209	G-041209-00	Cylinder	1	G01	SR-S10	Snap Ring	1
(B31)	SP-26	Spring Pin	2	H01	K-4410	Key	1

Ass'y No. denotes no. of the assembled parts comprising of more than 1 pc. of parts. The related parts are shown in the thick frame.

Index No. 209 is supplied together with parts shown in ().

Specify parts number and quantity in ordering.

■ Standard Accessories : F-111.....27 Hex. Open-End Wrench 1.
F-201.....16mm Open-End Pin Wrench 1.

● Optional Accessory : HN-203000.....PT1/4×3/8 Hose Nipple 1.