



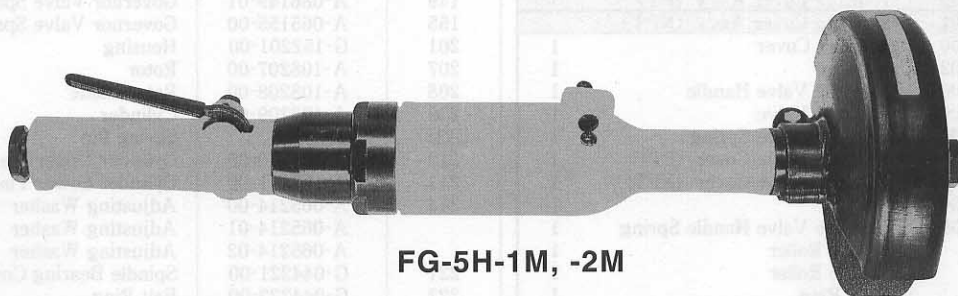
# USER MANUAL

## STRAIGHT GRINDERS

MODELS : FG-5H-1, -1M, -2, -2M



FG-5H-1, -2



FG-5H-1M, -2M

### SPECIFICATIONS

Model	Max. Dia (Grinding Wheel)		Rotational Frequency	Spindle Thread Size	Overall Length		Mass		Max. Air Consumption		Air Inlet Thread Size	Air Hose Size	
	mm	in			min <sup>-1</sup>	in	mm	in	kg	lb		m <sup>3</sup> /min	ft <sup>3</sup> /min
FG-5H-1	125×19×12.7	5×3/4×1/2	7,600	W1/2-12	405	15 60/64	2.7	6.0	1.0	35.3	PT or NPT 3/8	12.7	1/2
FG-5H-1M	125×19×12.7	5×3/4×1/2	7,600	W1/2-12	506	19 29/32	2.5	5.5	1.0	35.3	PT or NPT 3/8	12.7	1/2
FG-5H-2	125×19×15.8	5×3/4×5/8	7,600	5/8-11UNC	410	15 1/7	2.8	6.1	1.0	35.3	PT or NPT 3/8	12.7	1/2
FG-5H-2M	125×19×15.8	5×3/4×5/8	7,600	5/8-11UNC	511	20 1/8	2.5	5.5	1.0	35.3	PT or NPT 3/8	12.7	1/2

The performance figures are at 0.63MPa (6.3bar).

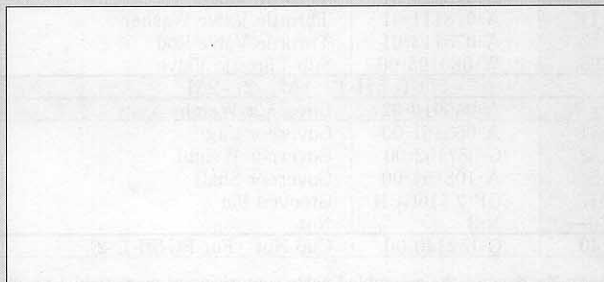
⚠ Refer to "The Instructions and Warning for Safety Use" enclosed in each tool box.

FUJI AIR TOOLS CO., LTD.

2-1-14 Kamiji, Higashinari-ku, Osaka, 537-0003 Japan

Tel : 81-6-6972-2335

Fax : 81-6-6972-2250



BOLT & NUT SETTERS  
SCREW DRIVERS

ABRASIVE TOOLS

DRILLS • TAPPERS

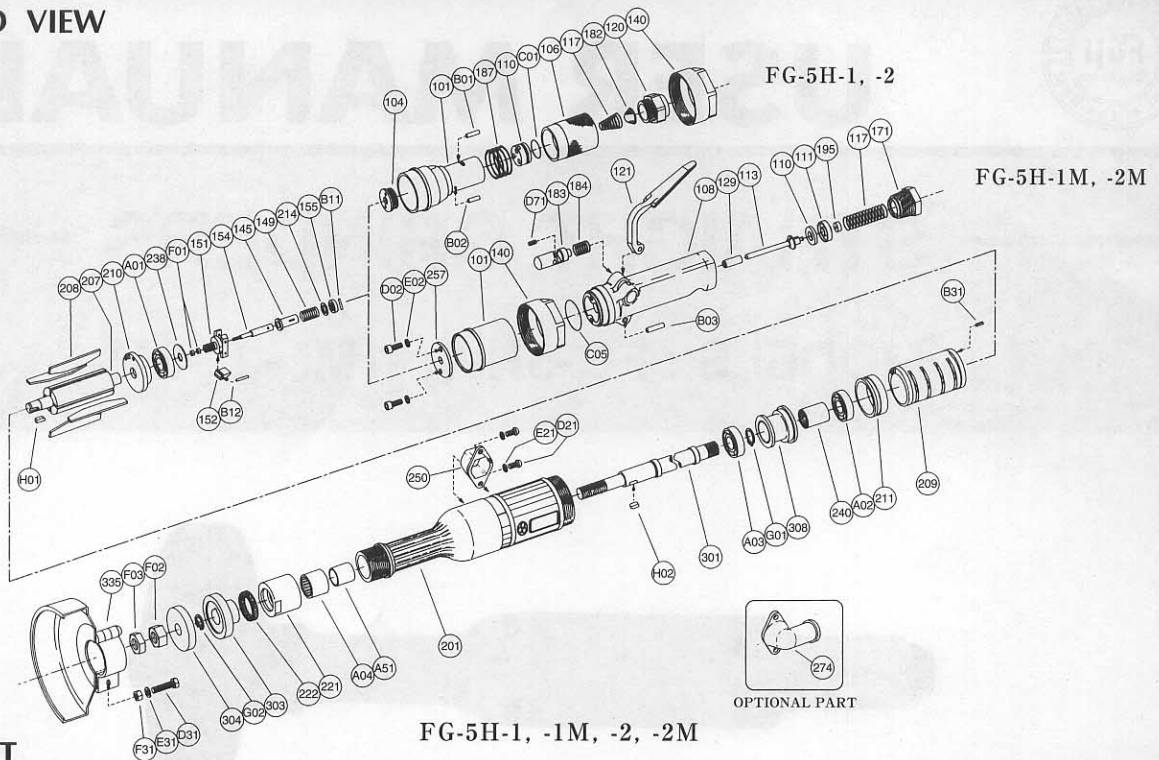
PERCUSSION TOOLS

AIR MOTORS & OTHERS

OTHER PRODUCTS

# PARTS LIST MODEL: FG-5H-1, -1M, -2, -2M

## EXPLODED VIEW



## PARTS LIST

FG-5H-1, -1M, -2, -2M

Index No.	Parts No.	Parts Name	Qt.
<b>FG-5H-1, -2</b>			
Ass'y No.	A-086001-00	Housing Cover Ass'y <PT>	
Ass'y No.	A-086001-01	Housing Cover Ass'y <NPT>	
101	A-086101-00	Housing Cover	1
104	A-065104-02	Bushing	1
106	A-086106-00	Throttle Valve Handle	1
110	A-086110-00	Throttle Valve	1
117	A-086117-00	Throttle Valve Spring	1
120	A-086120-00	Throttle Valve Cover <PT>	1
	A-086120-01	Throttle Valve Cover <NPT>	1
182	A-086182-00	Strainer	1
187	A-086187-00	Throttle Valve Handle Spring	1
B01	NR-415	Needle Roller	1
B02	NR-413	Needle Roller	1
C01	O-S20	"O" Ring	1
<b>FG-5H-1M, -2M</b>			
Ass'y No.	A-108001-01	Housing Cover Ass'y	
101	A-108101-00	Housing Cover	1
140	G-152140-00	Cup Nut	1
257	A-108257-00	Washer	1
C05	O-S34	"O" Ring	1
D02	CS-518	Cap Screw	2
E02	SW-5	Spring Washer	2
Ass'y No.	A-096003-00	Throttle Valve Body Ass'y <PT>	
Ass'y No.	A-096003-03	Throttle Valve Body Ass'y <NPT>	
108	A-096003-50	Throttle Valve Body	1
(129)	A-078129-00	Throttle Valve Rod Bushing	1
117	A-078117-01	Throttle Valve Spring	1
121	A-078121-00	Throttle Valve Lever	1
171	IB-6N30S0	Inlet Bushing <PT>	1
	IB-6N3NS0	Inlet Bushing <NPT>	1
183	A-078183-01	Lock Key	1
184	A-078184-00	Lock Spring	1
B03	GP-520GCH	Grooved Pin	1
D71	SS-48	Set Screw	1
Ass'y No.	A-078008-00	Throttle Valve Rod Ass'y	
110	A-078110-01	Throttle Valve	1
111	A-078111-01	Throttle Valve Washer	1
113	A-078113-01	Throttle Valve Rod	1
195	W-080195-00	Sub Throttle Valve	1
<b>FG-5H-1, -1M, -2, -2M</b>			
Ass'y No.	A-065010-02	Governor Weight Ass'y	
151	A-065151-00	Governor Cage	1
152	G-087152-00	Governor Weight	2
154	A-108154-00	Governor Shaft	1
B12	NP-2.516GCH	Grooved Pin	2
F01	N-3	Nut	2
140	G-152140-00	Cup Nut <For FG-5H-1, -2>	1

Index No.	Parts No.	Parts Name	Qt.
145	A-065145-00	Governor Valve	1
149	A-086149-01	Governor Valve Spring	1
155	A-065155-00	Governor Valve Spring Holder	1
201	G-152201-00	Housing	1
207	A-108207-00	Rotor	1
208	A-108208-00	Rotor Blade	4
209	A-108209-00	Cylinder	1
(B31)	SP-38	Spring Pin	1
210	A-108210-00	Cylinder Upper Plate	1
211	A-108211-00	Cylinder Lower Plate	1
214	A-065214-00	Adjusting Washer <T = 0.2>	1
	A-065214-01	Adjusting Washer <T = 0.3>	1
	A-065214-02	Adjusting Washer <T = 0.5>	1
221	G-044221-00	Spindle Bearing Cover	1
222	G-044222-00	Felt Ring	1
238	A-108238-00	Bearing Cover <B>	1
240	G-152240-00	Coupling	1
250	G-152250-00	Exhaust Cover	1
(D21)	CS-510B	Cap Screw	2
(E21)	SW-5	Spring Washer	2
301	G-152301-00	Wheel Spindle	1
303	G-152303-05	Wheel Flange <A>	1
304	G-152304-03	Wheel Flange <B>	1
308	G-152308-00	Spacer	1
335	G-088335-00	Wheel Guard	1
(D31)	HS-625	Hexagon Bolt	1
(E31)	SW-6	Spring Washer	1
(F31)	N-6	Nut	1
A01	BB-6001	Ball Bearing	1
A02	BB-6301	Ball Bearing	1
A03	BB-6202	Ball Bearing	1
A04	NB-HK2020	Needle Bearing	1
A51	IR-172020.5	Inner Race	1
B11	NR-211.8	Needle Roller	1
F02	N-W1/2	Nut	1
F03	N-W1/2 (3)	Nut	1
G01	SR-S15	Snap Ring	1
G02	SR-E12	Snap Ring	1
H01	K-4410F	Key	1
H02	K-4410	Key	1
<b>FG-5H-2, -2M</b>			
301	G-152301-01	Wheel Spindle	1
304	G-152304-04	Wheel Flange <B>	1
F02	N-U5/8	Nut	1
F03	N-U5/8 (3)	Nut	1
G02	SR-S16	Snap Ring	1
<b>OPTIONAL PART</b>			
274	G-152274-00	Exhaust Hose Joint	1

Ass'y No. denotes the assembled parts comprising of more than 1 pc. of parts. The related parts are shown in the thick frame.

#108, 209, 250 and 335 are supplied together with parts shown in ( ).  
 Specify parts number and quantity in ordering.