

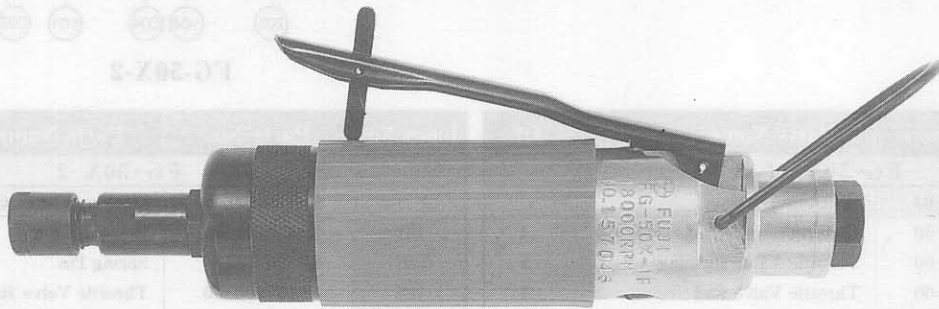


# USER MANUAL

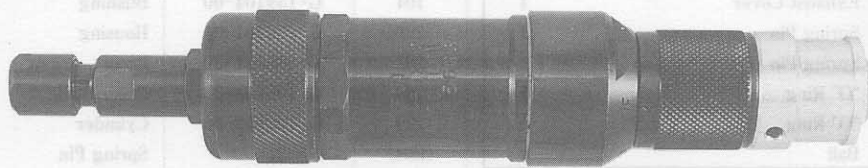
## DIE GRINDER

(REAR EXHAUST TYPE)

MODELS : FG-50X-1F, -2



FG-50X-1F



FG-50X-2

### SPECIFICATIONS

Model	Throttle Type	Collet Capacity		Capacity				Max. Free Speed	Overall Length (about)		Weight (about)		Air Consumption at Max. Output (about)		Air Inlet Thread Size	Air Hose Size	
				Grinding Wheel		Burr Head											
		mm	in	mm	in	mm	in		rpm	mm	in	kg	lb	m <sup>3</sup> /min		ft <sup>3</sup> /min	PT or NPT
FG-50X-1F	Lever	6	1/4	32	1 1/4	22	7/8	18,000	214	8 27/64	0.8	1.8	0.5	17.7	1/4	8.0	5/16
FG-50X-2	Ring	6	1/4	32	1 1/4	22	7/8	18,000	218	8 37/64	0.9	2.0	0.5	17.7	1/4	8.0	5/16

⚠ Refer to instructions and warning for safety use enclosed in each tool box.

## FUJI AIR TOOLS CO., LTD.

1-14, Kamiji 2-chome, Higashinari-ku, Osaka 537, Japan  
 Tel : (06) 972-2335  
 Fax : (06) 972-2250

BOLT & NUT SETTERS  
SCREW DRIVERS

ABRASIVE TOOLS

DRILLS • TAPPERS

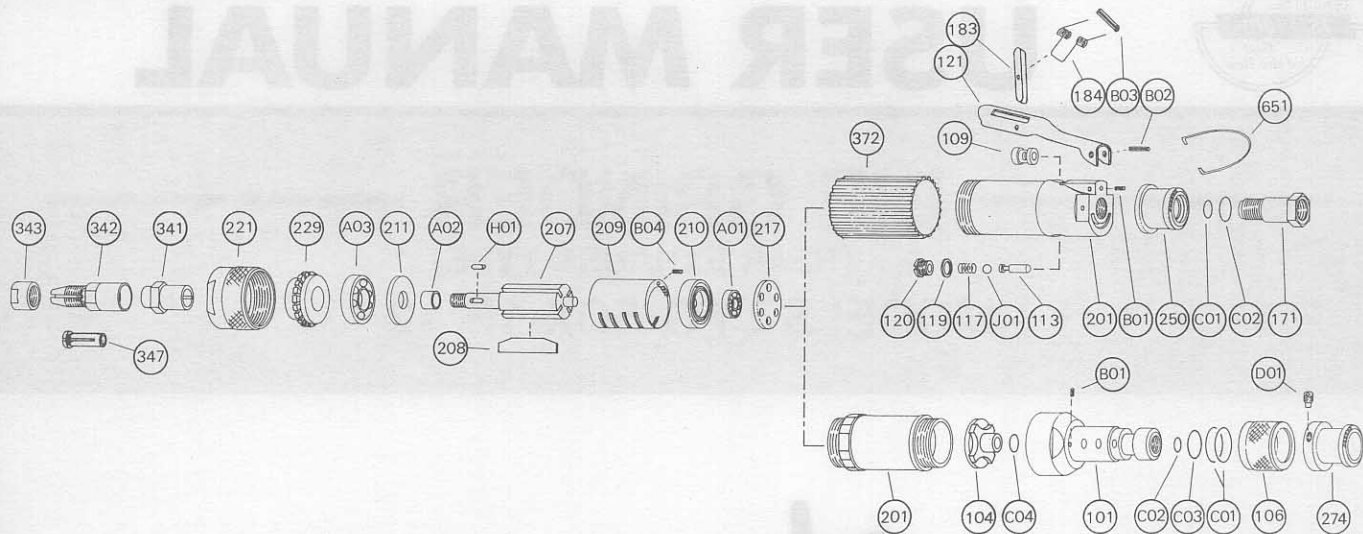
PERCUSSION TOOLS

AIR MOTORS & OTHERS

OTHER PRODUCTS

# PARTS LIST MODEL: FG-50X-1F, -2

## EXPLODED VIEW



## PARTS LIST

Index No.	Parts No.	Parts Name	Qt.
<b>FG-50X-1F</b>			
CP No.	G-159006-01	Housing CP	
201	G-159006-50	Housing	1
(109)	G-144109-00	Throttle Valve Bushing	1
113	G-144113-00	Throttle Valve Rod	1
117	D-021117-00	Throttle Valve Spring	1
119	D-021119-00	T.V. Cover Packing	1
120	D-021120-00	Throttle Valve Cover	1
171	G-146171-00	Inlet Joint (PT)	1
171	G-146171-01	Inlet Joint (NPT)	1
250	G-146250-00	Exhaust Cover	1
B01	SP-2.56	Spring Pin	1
B02	SP-320	Spring Pin	1
C01	O-S10	"O" Ring	1
C02	O-S16	"O" Ring	1
J01	B-5/16U	Ball	1
CP No.	A-122019-01	Lock Lever CP	
121	A-122121-00	Throttle Valve Lever	1
183	G-144183-02	Lock Key	1
184	G-144184-00	Lock Spring	1
B03	SP-218	Spring Pin	1
207	G-158207-00	Rotor	1
208	G-106208-00	Rotor Blade	4
209	G-106209-00	Cylinder	1
(B04)	SP-26	Spring Pin	1
210	G-106210-00	Cylinder Upper Plate	1
211	G-158211-00	Cylinder Lower Plate	1
217	G-140217-00	Bearing Cover	1
221	G-159221-00	Spindle Bearing Cover	1
229	G-159229-00	Bearing Spacer	1
341	G-144341-00	Chuck Collar	1
342	G-144342-00	Collet (6mm)	1
342	G-144342-01	Collet (1/4)	1
343	G-144343-00	Collet Nut	1
372	G-158372-00	Plastic Cover	1
651	W-106651-00	Hanger	1
A01	BB-626	Ball Bearing	1
A02	IR-81212.5	Inner Race	1
A03	BB-6001ZZ	Ball Bearing	1
H01	K-32.512	Key	1
<b>OPTIONAL PART</b>			
347	G-032347-00	Collet Bushing (3mm)	1
347	G-032347-03	Collet Bushing (1/8)	1

Index No.	Parts No.	Parts Name	Qt.
<b>FG-50X-2</b>			
CP No.	G-159001-00	Housing Cover CP	
101	G-159101-00	Housing Cover	1
(B01)	SP-26	Spring Pin	1
106	G-137106-00	Throttle Valve Handle	1
274	A-127274-00	Exhaust Hose Joint	1
C01	O-P21	"O" Ring	2
C02	O-P5	"O" Ring	1
C03	O-S18	"O" Ring	1
D01	SS-58D	Set Screw	1
104	G-159104-00	Bushing	1
201	G-159201-01	Housing	1
207	G-158207-00	Rotor	1
208	G-106208-00	Rotor Blade	4
209	G-106209-00	Cylinder	1
(B04)	SP-26	Spring Pin	1
210	G-106210-00	Cylinder Upper Plate	1
211	G-158211-00	Cylinder Lower Plate	1
217	G-106217-00	Bearing Cover	1
221	G-159221-00	Spindle Bearing Cover	1
229	G-159229-00	Bearing Spacer	1
341	G-144341-00	Chuck Collar	1
342	G-144342-00	Collet (6mm)	1
342	G-144342-01	Collet (1/4)	1
343	G-144343-00	Collet Nut	1
A01	BB-626	Ball Bearing	1
A02	IR-81212.5	Inner Race	1
A03	BB-6001ZZ	Ball Bearing	1
C04	O-P7	"O" Ring	1
H01	K-32.512	Key	1
<b>OPTIONAL PART</b>			
347	G-032347-00	Collet Bushing (3mm)	1
347	G-032347-03	Collet Bushing (1/8)	1

- CP No. denotes the assembled parts comprising of more than 1 pc. of parts. The related parts are shown in the thick frame.
- #101, 201 and 209 are supplied together with parts shown in ( ).
- Specify parts number and quantity in ordering.

- Standard Accessories :
- F-105.....14Hex Open-End Wrench 2.
  - EH-100-1.....25mm×1m Exhaust Hose 1.
  - IH-8B.....PT1/4×PT1/4 Inlet Hose 1.