

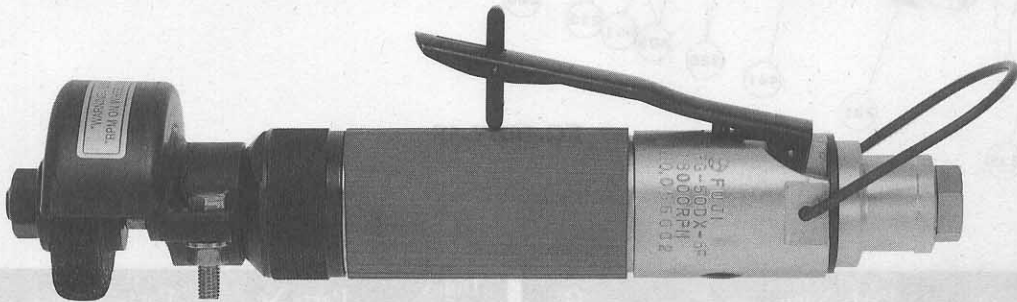


USER MANUAL

DIE GRINDER

(REAR EXHAUST TYPE)

MODELS : FG-50DX-5F



FG-50DX-5F

SPECIFICATIONS

Model	Capacity (Grinding Wheel)		Max. Free Speed	Spindle Thread Size	Overall Length (about)		Mass (about)		Air Consumption at Max.Output (about)		Air Inlet Thread Size	Air Hose Size	
	mm	in			rpm	mm	in	kg	lb	Nm ³ /min		Nft ³ /min	PT or NPT
FG-50DX-5F	50×13×10	2×1/2×3/8	18,000	3/8-16UNC	255	10 ¹ / ₃₂	1.0	2.2	0.45	15.9	1/4"	8.0	5/16

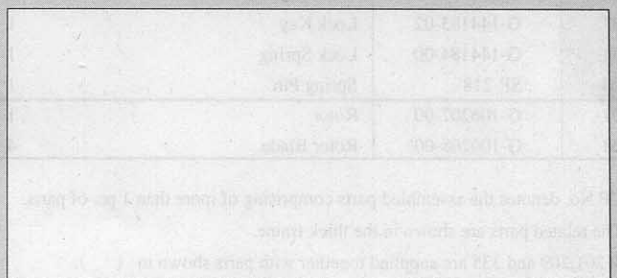
The performance figures are at 0.63 MPa (6.3bar).



Refer to "The Instructions and Warning for Safety Use" enclosed in each tool box.

FUJI AIR TOOLS CO., LTD.

1-14, Kamiji 2-chome, Higashinari-ku,
Osaka, 537-0003 Japan
Tel : (06) 972-2335
Fax : (06) 972-2250



BOLT & NUT SETTERS
SCREW DRIVERS

ABRASIVE TOOLS

DRILLS · TAPPERS

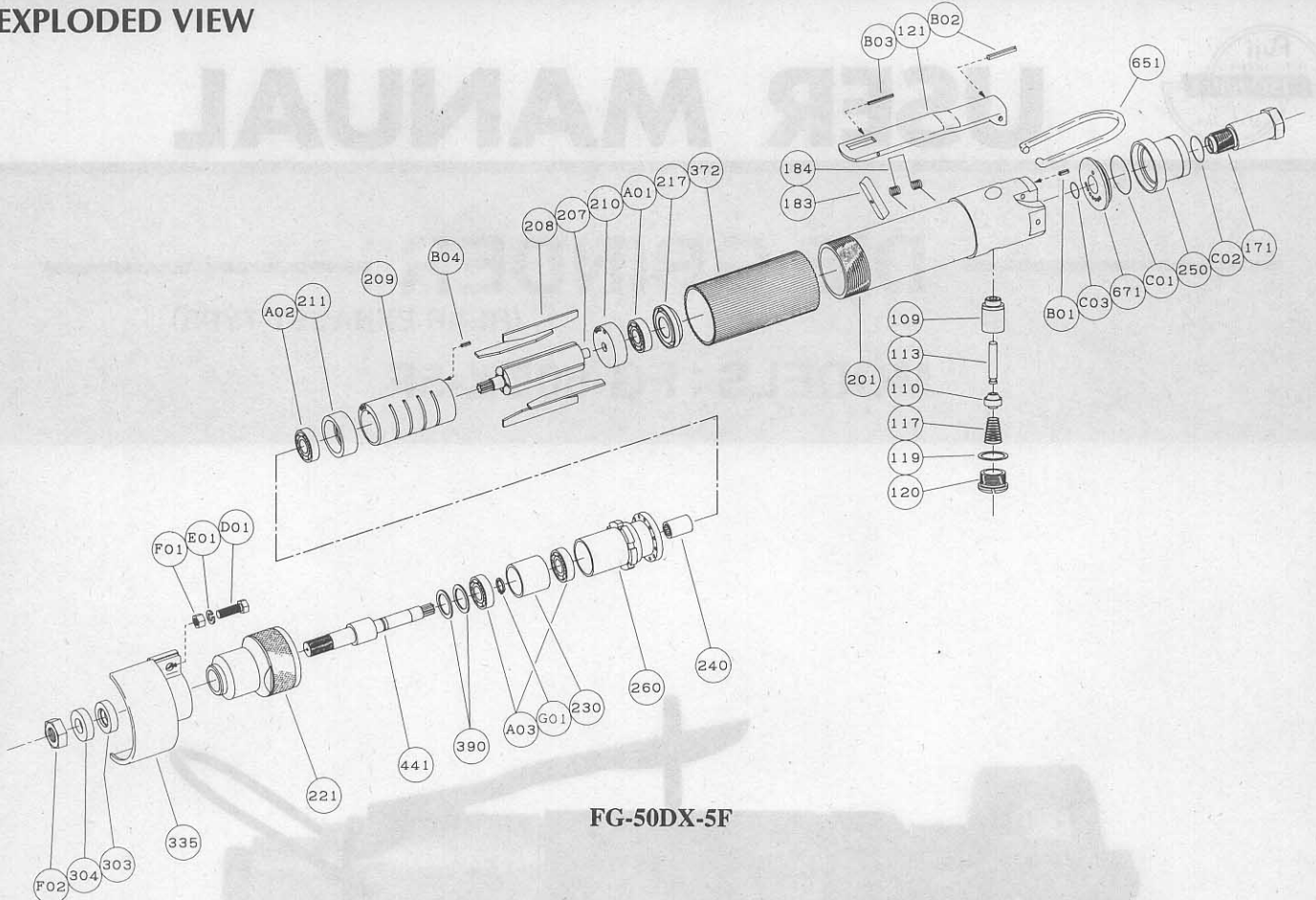
PERCUSSION TOOLS

AIR MOTORS & OTHERS

OTHER PRODUCTS



EXPLODED VIEW



FG-50DX-5F

PARTS LIST

Index No.	Parts No.	Parts Name	Qt.	Index No.	Parts No.	Parts Name	Qt.
FG-50DX-5F							
CP No.	G-140006-01	Housing CP					
201	G-140006-50	Housing	1	209	G-106209-00	Cylinder	1
(109)	G-106109-00	Throttle Valve Bushing	1	(B04)	SP-26	Spring Pin	1
117	G-105117-00	Throttle Valve Spring	1	210	G-106210-00	Cylinder Upper Plate	1
119	G-028119-00	T.V. Cover Packing	1	211	G-106211-00	Cylinder Lower Plate	1
120	G-028120-00	Throttle Valve Cover	1	217	G-140217-00	Bearing Cover	1
171	W-100171-00	Inlet Joint <PT>	1	221	G-140221-00	Spindle Bearing Cover	1
171	W-100171-01	Inlet Joint <NPT>	1	230	G-106230-00	Bearing Spacer 	1
250	G-140250-00	Exhaust Cover	1	240	G-105240-00	Coupling	1
671	G-140671-00	Exhaust Cover Joint	1	260	G-106260-00	Bearing Case	1
B01	SP-2.56	Spring Pin	1	303	G-140303-02	Wheel Flange <A>	1
B02	SP-322	Spring Pin	1	304	G-140304-00	Wheel Flange 	1
C01	O-S28	"O"Ring	1	335	G-140335-00	Wheel Guard	1
C02	O-S16	"O"Ring	1	(D01)	HS-516	Hexagon Bolt	1
C03	O-S10	"O"Ring	1	(E01)	SW-5	Spring Washer	1
				(F01)	N-5	Nut	1
CP No.	G-028008-00	Throttle Valve Rod CP		372	G-106372-00	Plastic Cover	1
110	H-001110-02	Throttle Valve	1	390	G-143390-00	Seal Ring	2
113	G-028113-00	Throttle Valve Rod	1	441	G-140441-00	Spindle 	1
CP No.	G-143019-01	Lock Lever CP		651	W-100651-00	Hanger	1
121	G-143121-01	Throttle Valve Lever	1	A01	BB-626	Ball Bearing	1
183	G-144183-02	Lock Key	1	A02	BB-608	Ball Bearing	1
184	G-144184-00	Lock Spring	1	A03	BB-608MN	Ball Bearing	2
B03	SP-218	Spring Pin	1	F02	N-U3/8	Nut	1
207	G-106207-00	Rotor	1	G01	SR-S8	Snap Ring	1
208	G-106208-00	Rotor Blade	4				

□ CP No. denotes the assembled parts comprising of more than 1 pc. of parts.

The related parts are shown in the thick frame.

□ #201,209 and 335 are supplied together with parts shown in ().

□ Specify parts number and quantity in ordering.

■ Standard Accessories :

F-10412mm Open-End Wrench 1.

EH-50AExhaust Hose 1.

IH-8BPT1/4"×PT1/4" Inlet Hose 1.

IH-8BNNPT1/4"×NPT1/4" Inlet Hose 1.