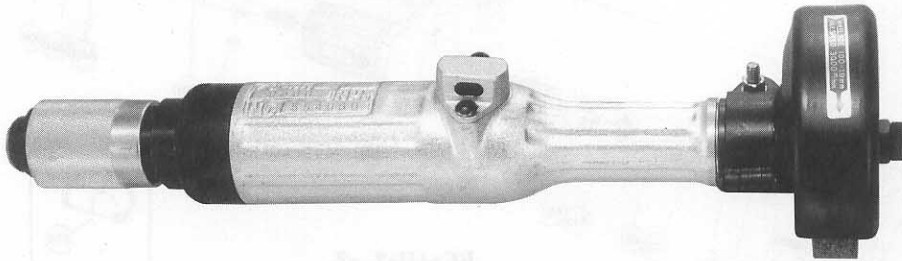




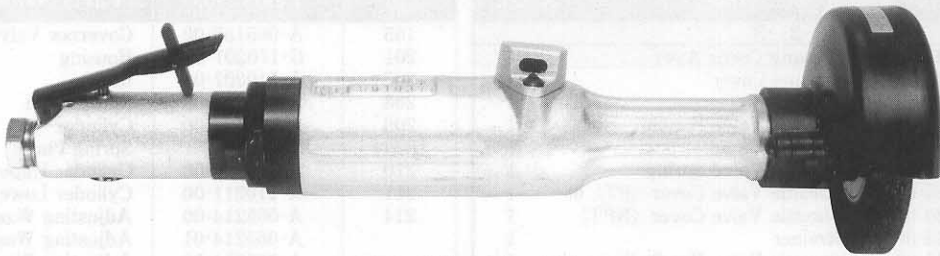
USER MANUAL

STRAIGHT GRINDERS

MODELS : FG-4H-2, -2F, -3, -3F



FG-4H-2, -3



FG-4H-2F, -3F

SPECIFICATIONS

Model	Max. Dia (Grinding Wheel)		Rotational Frequency	Air Inlet Thread Size	Overall Length		Mass		Max. Air Consumption		Air Inlet Thread Size	Recommended Air Hose Size	
	mm	in			min ⁻¹	in	mm	in	kg	lb		m ³ /min	ft ³ /min
FG-4H-2	100×19×12.7	4×3/4×1/2	9,500	W1/2-12	391	15 25/64	2.2	4.8	0.80	28.2	PT or NPT 3/8	12.7	1/2
FG-4H-2F	100×19×12.7	4×3/4×1/2	9,500	W1/2-12	414	16 19/64	2.3	5.1	0.80	28.2	PT or NPT 3/8	12.7	1/2
FG-4H-3	100×19×15.8	4×3/4×5/8	9,500	5/8-11UNF	396	15 19/32	2.5	5.5	0.80	28.2	PT or NPT 3/8	12.7	1/2
FG-4H-3F	100×19×15.8	4×3/4×5/8	9,500	5/8-11UNF	424	16 11/16	2.4	5.3	0.80	28.2	PT or NPT 3/8	12.7	1/2

The performance figures are at 0.63MPa (6.3bar).

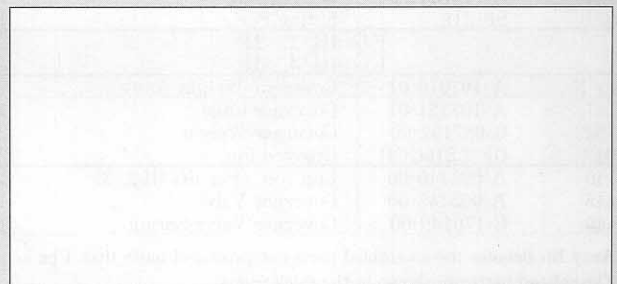
⚠ Refer to "The Instructions and Warning for Safety Use" enclosed in each tool box.

FUJI AIR TOOLS CO., LTD.

2-1-14 Kamiji, Higashinariku, Osaka 537-0003, Japan

Tel : (06) 6972-2335

Fax : (06) 6972-2250



BOLT & NUT SETTERS
SCREW DRIVERS

ABRASIVE TOOLS

DRILLS • TAPPERS

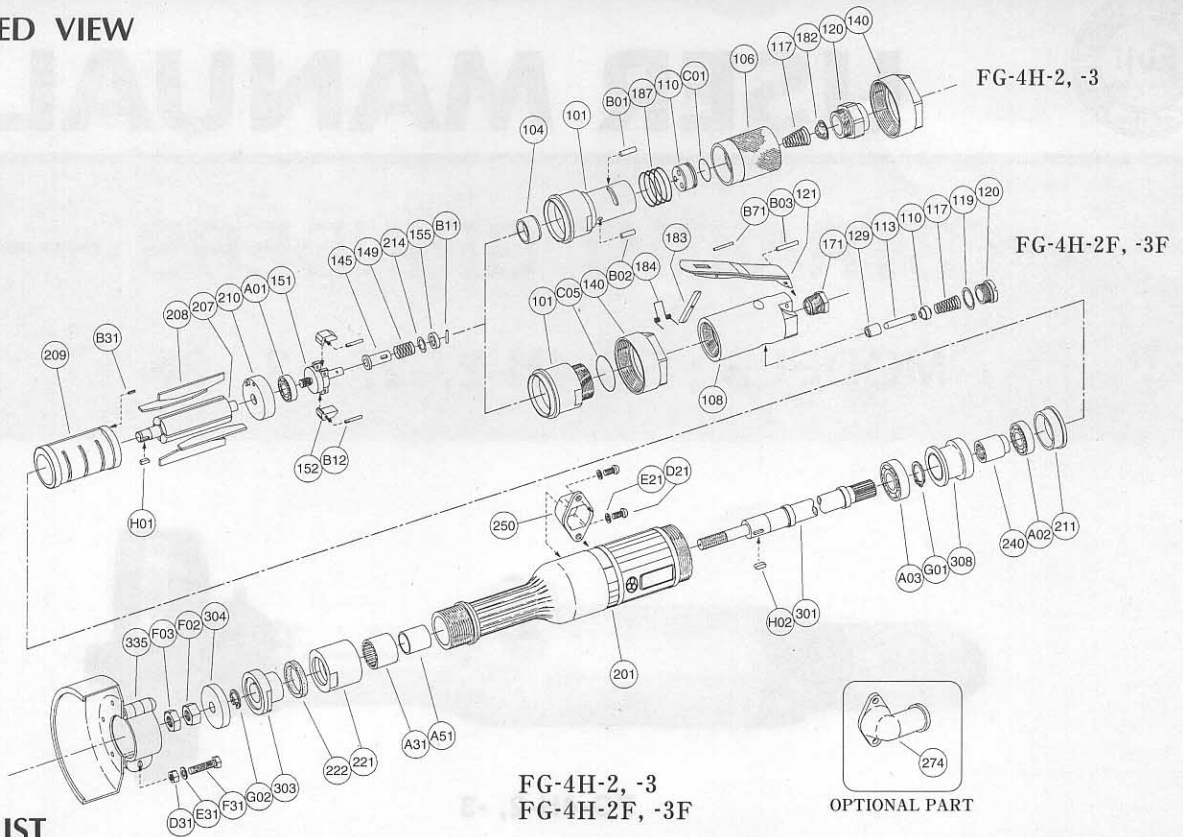
PERCUSSION TOOLS

AIR MOTORS & OTHERS

OTHER PRODUCTS

PARTS LIST MODEL: FG-4H-2, -2F, -3, -3F

EXPLODED VIEW



PARTS LIST

Index No.	Parts No.	Parts Name	Qt.
FG-4H-2, -3			
Ass'y No.	A-093001-00	Housing Cover Ass'y	
101	G-170001-50	Housing Cover	1
(104)	G-103104-00	Bushing	1
106	A-086106-00	Throttle Valve Handle	1
110	A-086110-00	Throttle Valve	1
117	A-086117-00	Throttle Valve Spring	1
120	A-086120-00	Throttle Valve Cover (PT) or	1
	A-086120-01	Throttle Valve Cover (NPT)	1
182	A-086182-00	Strainer	1
187	A-086187-00	Throttle Valve Handle Spring	1
B01	NR-415	Needle Roller	1
B02	NR-413	Needle Roller	1
C01	O-S20	"O" Ring	1
FG-4H-2F, -3F			
Ass'y No.	A-110001-01	Housing Cover Ass'y	
101	A-110101-00	Housing Cover	1
140	A-093140-00	Cup Nut	1
C05	O-S26	"O" Ring	1
Ass'y No.	A-107003-00	Throttle Valve Body Ass'y	
108	A-107003-50	Throttle Valve Body	1
(129)	H-014129-00	Throttle Valve Rod Bushing	1
110	H-001110-02	Throttle Valve	1
113	G-028113-00	Throttle Valve Rod	1
117	D-001117-00	Throttle Valve Spring	1
119	G-028119-00	T.V. Cover Packing	1
120	G-028120-00	Throttle Valve Cover	1
171	IB-4030S0	Inlet Bushing (PT) or	1
	IB-403NS0	Inlet Bushing (NPT)	1
B03	SP-320	Spring Pin	1
Ass'y No.	G-144019-01	Lock Lever Ass'y	
121	G-144121-02	Throttle Valve Lever	1
183	G-144183-02	Lock Key	1
184	G-144184-00	Lock Spring	1
B71	SP-218	Spring Pin	1
FG-4H-2, -2F			
FG-4H-3, -3F			
Ass'y No.	A-107010-01	Governor Weight Ass'y	
151	A-107151-01	Governor Cage	1
152	G-087152-00	Governor Weight	2
B12	GP-2.516GCH	Grooved Pin	2
140	A-093140-00	Cup Nut (For FG-4H-2, -3)	1
145	A-065145-00	Governor Valve	1
149	G-170149-00	Governor Valve Spring	1

Index No.	Parts No.	Parts Name	Qt.
155	A-065155-00	Governor Valve Spring Holder	1
201	G-170201-00	Housing	1
207	A-110207-00	Rotor	1
208	A-093208-00	Rotor Blade	4
209	A-073209-00	Cylinder	1
(B31)	SP-26	Spring Pin	1
210	A-110210-00	Cylinder Upper Plate	1
211	A-110211-00	Cylinder Lower Plate	1
214	A-065214-00	Adjusting Washer (T = 0.2) or	1
	A-065214-01	Adjusting Washer (T = 0.3) or	1
	A-065214-02	Adjusting Washer (T = 0.5)	1
221	G-044221-00	Spindle Bearing Cover	1
222	G-044222-00	Felt Ring	1
240	G-170240-00	Coupling	1
250	G-170250-00	Exhaust Cover	1
301	G-152301-00	Wheel Spindle	1
303	G-170303-06	Wheel Flange (A)	1
304	G-170304-05	Wheel Flange (B)	1
308	G-170308-00	Spacer	1
335	G-043335-00	Wheel Guard	1
(D31)	HS-625	Hexagon Bolt	1
(E31)	SW-6	Spring Washer	1
(F31)	N-6	Nut	1
A01	BB-609MN	Ball Bearing	1
A02	BB-6200	Ball Bearing	1
A03	BB-6202	Ball Bearing	1
A31	NB-HK2020	Needle Bearing	1
A51	IR-172020.5	Inner Race	1
B11	NR-211.8	Needle Roller	1
D21	CS-510B	Cap Screw	2
E21	SW-5	Spring Washer	2
F02	N-W1/2	Nut	1
F03	N-W1/2 (3)	Nut	1
G01	SR-S15	Snap Ring	1
G02	SR-E12	Snap Ring	1
H01	K-338F	Key	1
H02	K-4410	Key	1
FG-4H-3, -3F			
301	G-152301-01	Wheel Spindle	1
304	G-170304-06	Wheel Flange (B)	1
F02	N-U5/8	Nut	1
F03	N-U5/8 (3)	Nut	1
G02	SR-S16	Snap Ring	1
OPTIONAL PART			
274	G-170274-00	Exhaust Hose Joint	1

□ Ass'y No. denotes the assembled parts comprising of more than 1 pc. of parts.
The related parts are shown in the thick frame.
□ #101, 108, 209, and 335 are supplied together with parts shown in (-).

□ Specify parts number and quantity in ordering.
■ Standard Accessory : F-112.....32mm Hex. Open-End Wrench 1.