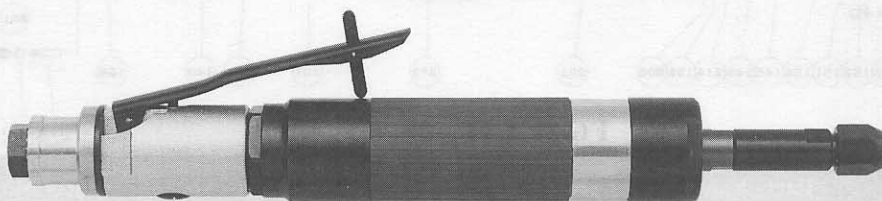




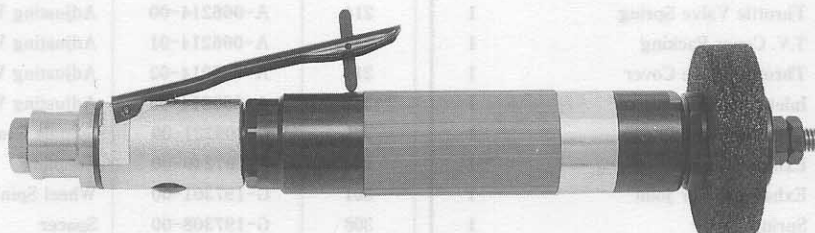
USER MANUAL

— LOW SPEED GRINDERS —

MODELS : FG-3VX-1F, -2F, -3F, -6F



FG-3VX-1F, -6F



FG-3VX-2F, -3F

SPECIFICATIONS

Model	Collet Capacity		Wheel Thread Size		Max. Free Speed rpm	Overall Length (about)		Weight (about)		Air Consumption at Max. Output (about)		Air Inlet Thread Size PT or NPT	Air Hose Size	
	mm	in	mm	in		mm	in	kg	lb	Nm ³ /min	ft ³ /min		mm	in
FG-3VX-1F	6	1/4	—	—	7,600	331	13 1/32	1.4	3.1	0.45	15.9	1/4	9.5	3/8
FG-3VX-2F	—	—	—	3/8-16	9,500	316	12 7/16	1.4	3.1	0.47	16.6	1/4	9.5	3/8
FG-3VX-3F	—	—	—	3/8-16	7,600	316	12 7/16	1.4	3.1	0.45	15.9	1/4	9.5	3/8
FG-3VX-6F	6	1/4	—	—	12,000	331	13 1/32	1.4	3.1	0.47	16.6	1/4	9.5	3/8

The performance figures are at 6.3 bar.

⚠ Refer to instructions and warning for safety use enclosed in each tool box.

FUJI AIR TOOLS CO., LTD.

1-14, Kamiji 2-chome, Higashinari-ku, Osaka 537, Japan
 Tel : (06) 972-2335
 Fax : (06) 972-2250

BOLT & NUT SETTERS
SCREW DRIVERS

ABRASIVE TOOLS

DRILLS · TAPPERS

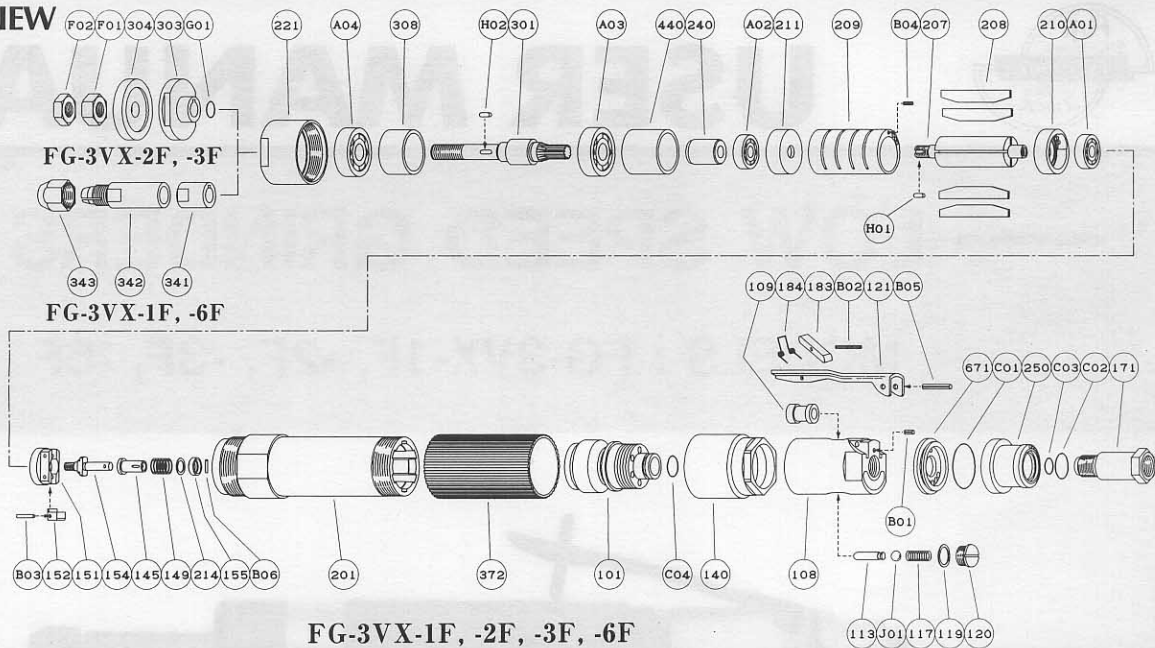
PERCUSSION TOOLS

AIR MOTORS & OTHERS

OTHER PRODUCTS

PARTS LIST MODEL: FG-3VX-1F, -2F, -3F, -6F

EXPLODED VIEW



PARTS LIST

FG-3VX-1F, -2F, -3F, -6F

Index No.	Parts No.	Parts Name	Qt.	Index No.	Parts No.	Parts Name	Qt.
FG-3VX-1F, -2F, -3F, -6F				208	A-124208-00	Rotor Blade	4
CP No.	G-209003-00	Throttle Valve Body CP		209	A-124209-00	Cylinder	1
108	G-209003-50	Throttle Valve Body	1	(B04)	SP-26	Spring Pin	1
(109)	G-144109-00	Throttle Valve Bushing	1	210	A-124210-00	Cylinder Upper Plate	1
113	G-144113-00	Throttle Valve Rod	1	211	A-124211-00	Cylinder Lower Plate	1
117	D-021117-00	Throttle Valve Spring	1	214	A-066214-00	Adjusting Washer <T=0.2>	1
119	D-021119-00	T.V. Cover Packing	1	214	A-066214-01	Adjusting Washer <T=0.3>	1
120	D-021120-00	Throttle Valve Cover	1	214	A-066214-02	Adjusting Washer <T=0.1>	1
171	W-100171-00	Inlet Joint <PT>	1	214	A-066214-03	Adjusting Washer <T=0.5>	1
171	W-100171-01	Inlet Joint <NPT>	1	221	G-209221-00	Spindle Bearing Cover	1
250	G-209250-00	Exhaust Cover	1	240	G-197240-00	Coupling	1
671	G-209671-00	Exhaust Cover Joint	1	301	G-197301-00	Wheel Spindle	1
B01	SP-2.56	Spring Pin	1	308	G-197308-00	Spacer	1
C01	O-S28	"O" Ring	1	341	G-161341-00	Chuck Collar	1
C02	O-S16	"O" Ring	1	342	G-017342-00	Collet <6mm>	1
C03	O-S10	"O" Ring	1	342	G-017342-01	Collet <1/4>	1
J01	B-5/16U	Ball	1	343	G-162343-00	Collet Nut	1
CP No.	A-122019-01	Lock Lever CP		372	G-209372-00	Plastic Cover	1
121	A-122121-00	Throttle Valve Lever	1	440	G-163440-00	Ring	1
183	G-144183-02	Lock Key	1	A01	BB-608MN	Ball Bearing	1
184	G-144184-00	Lock Spring	1	A02	BB-608	Ball Bearing	1
B02	SP-218	Spring Pin	1	A03	BB-6001	Ball Bearing	1
CP No.	G-197010-00	Governor Weight CP		A04	BB-6001	Ball Bearing	1
151	A-124151-00	Governor Cage	1	B05	SP-320	Spring Pin	1
152	G-197152-00	Governor Weight	1	B06	NR-1.58.8	Needle Roller	1
154	A-124154-00	Governor Shaft	1	C04	O-S12	"O" Ring	1
B03	GP-212GCH	Grooved Pin	2	H01	K-2.52.57F	Key	1
101	G-209101-00	Housing Cover	1	H02	K-338	Key	1
140	G-209140-00	Cup Nut	1	FG-3VX-2F, -3F			
145	A-066145-00	Governor Valve	1	301	G-198301-00	Wheel Spindle	1
149	G-197149-00	Governor Valve Spring (FG-3VX-1F,-3F)	1	303	G-198303-00	Wheel Flange <A>	1
149	G-198149-00	Governor Valve Spring (FG-3VX-2F)	1	304	G-170304-00	Wheel Flange 	1
149	A-076149-00	Governor Valve Spring (FG-3VX-6F)	1	F01	N-W3/8	Nut	1
155	A-066155-00	Governor Valve Spring Holder	1	F02	N-W3/8(3)	Nut	1
201	G-209201-00	Housing	1	G01	SR-SA10	Snap Ring	1
207	A-124207-00	Rotor	1				

Standard Accessories :

EH-100-1 Exhaust Hose 1.

IH-8B Inlet Hose 1.

FG-3VX-1F,-6F.....F-105 14mm Open-End Wrench 1.

F-106 17mm Open-End Wrench 1.

FG-3VX-2F,-3F.....F-112 32mm Open-End Wrench 1.

BV-3-4 Nylon Bushing 1.

- CP No. denotes the assembled parts comprising of more than 1 pc. of parts. The related parts are shown in the thick frame.
- #108 and 209 are supplied together with parts shown in ().
- Specify parts number and quantity in ordering.