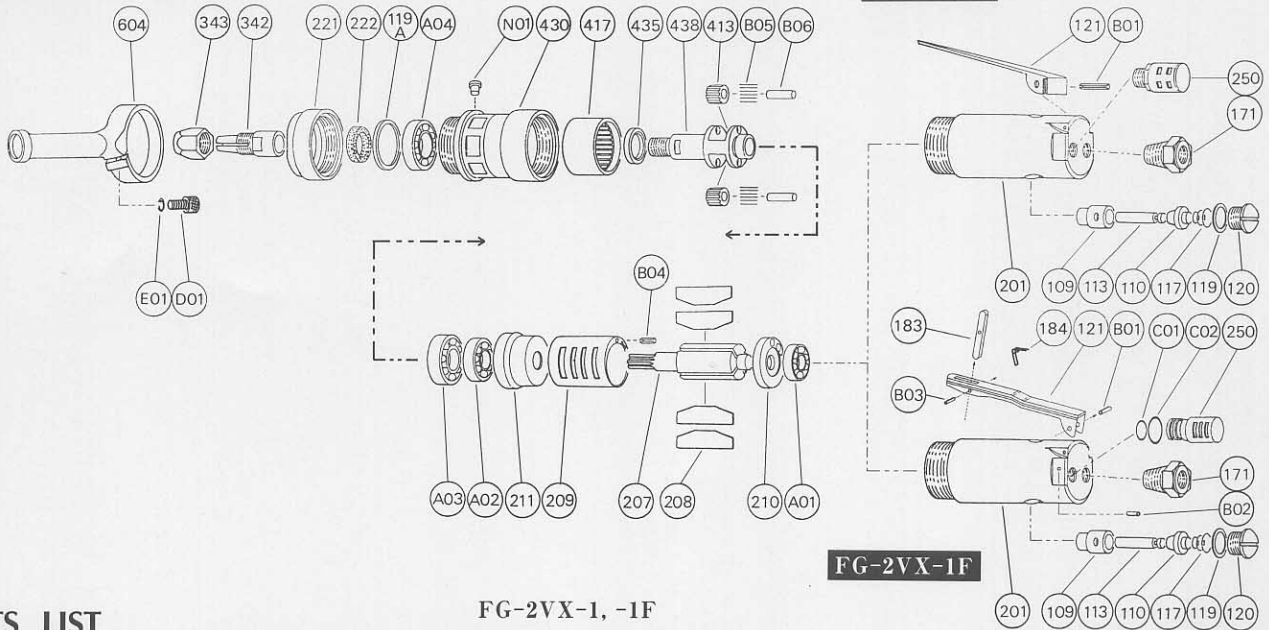


**EXPLODED VIEW**



**PARTS LIST**

FG-2VX-1, -1F

Index No.	Parts No.	Parts Name	Qt.
<b>FG-2VX-1</b>			
CP No.	<b>G-201006-00</b>	<b>Housing CP</b>	
201	D-085006-50	Housing Semi CP	1
(109)	G-028109-00	Throttle Valve Bushing	1
117	D-001117-00	Throttle Valve Spring	1
119	G-028119-00	T.V. Cover Packing	1
120	G-028120-00	Throttle Valve Cover	1
121	W-029121-00	Throttle Valve Lever	1
171	IB-202000	Inlet Bushing <PT>	1
171	IB-202N00	Inlet Bushing <NPT>	1
250	W-183250-02	Exhaust Cover	1
B01	SP-325	Spring Pin	1
CP No.	<b>G-028008-00</b>	<b>Throttle Valve Rod CP</b>	
110	H-001110-02	Throttle Valve	1
113	G-028113-00	Throttle Valve Rod	1
<b>FG-2VX-1F</b>			
CP No.	<b>G-201006-01</b>	<b>Housing CP</b>	
201	G-201006-50	Housing	1
(109)	G-028109-00	Throttle Valve Bushing	1
117	D-001117-00	Throttle Valve Spring	1
119	G-028119-00	T.V. Cover Packing	1
120	G-028120-00	Throttle Valve Cover	1
171	IB-202000	Inlet Bushing <PT>	1
171	IB-202N00	Inlet Bushing <NPT>	1
250	W-276250-00	Exhaust Cover	1
B01	SP-325	Spring Pin	1
B02	SP-2.520	Spring Pin	1
C01	O-S14	"O" Ring	1
C02	O-S15	"O" Ring	1
CP No.	<b>G-028008-00</b>	<b>Throttle Valve Rod CP</b>	
110	H-001110-02	Throttle Valve	1
113	G-028113-00	Throttle Valve Rod	1

Index No.	Parts No.	Parts Name	Qt.
CP No.	<b>G-201019-00</b>	<b>Locking Lever CP</b>	
121	G-201121-00	Throttle Valve Lever	1
183	G-144183-02	Lock Key	1
184	G-144184-00	Lock Spring	1
B03	SP-218	Spring Pin	1
<b>FG-2VX-1, -1F</b>			
119A	G-011119-00	T.V. Cover Packing	1
207	S-002207-00	Rotor	1
208	W-100208-00	Rotor Blade	4
209	D-001209-00	Cylinder	1
(B04)	SP-26	Spring Pin	1
210	D-002210-02	Cylinder Upper Plate	1
211	D-001211-00	Cylinder Lower Plate	1
221	D-014221-00	Spindle Bearing Cover	1
222	D-014222-00	Felt Ring	1
342	G-011342-05	Collet <6MM>	1
342	G-011342-00	Collet <1/4>	1
343	G-162343-00	Collet Nut	1
413	D-052413-00	No.1 Planet Gear	2
(B05)	NR-110.5	Needle Roller	24
417	A-129417-00	No.1 Internal Gear	1
430	D-130430-00	No.1 Gear Case	1
435	D-001435-00	Thrust Washer	1
438	G-201438-00	Spindle	1
604	G-201604-00	Dead Handle	1
(D01)	CS-825	Cap Screw	1
(E01)	SW-8	Spring Washer	1
A01	BB-626	Ball Bearing	1
A02	BB-608	Ball Bearing	1
A03	BB-EE4	Ball Bearing	1
A04	BB-EE4	Ball Bearing	1
B06	NR-319.8	Needle Roller	2
N01	GN-BIN # D26D	Grease Nipple	1

CP No. denotes the assembled parts comprising of more than 1 pc. of parts. The related parts are shown in the thick frame.

#201, 209, 413 and 604 are supplied together with parts shown in ( ).

Specify parts number and quantity in ordering.

■ Standard Accessories : 2 pc. Open-End Wrench.  
1 pc. Hex. Pin Wrench.

**MANUFACTURER :**  
**FUJI AIR TOOLS CO., LTD.**

1-14, Kamiji 2-chome, Higashinari-ku, Osaka 537, Japan  
Tel. : (06) 972-2335 (Overseas Dept) Fax : (06) 972-2250