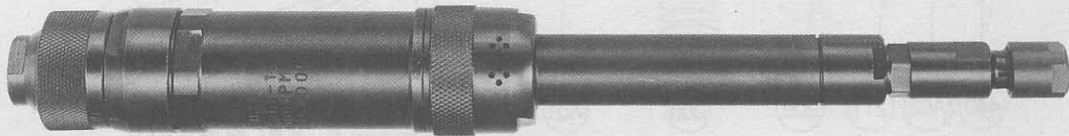




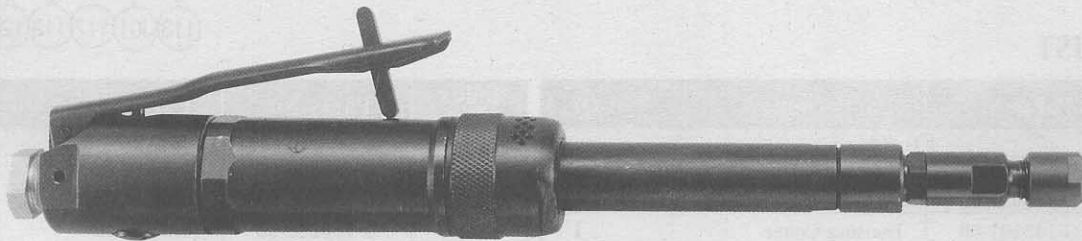
USER MANUAL

EXTENDED GRINDERS

MODELS : FG-26L-1, -1BF



FG-26L-1



FG-26L-1BF

SPECIFICATIONS

Model	Collet Size		Max. Dia (Grinding Wheel)		Rotational Frequency min ⁻¹	Overall Length		Mass		Air Consumption (At Load)		Air Intet Thread Size in	Air Hose Size	
	mm	in	mm	in		mm	in	kg	lb	m ³ /min	ft ³ /min		mm	in
FG-26L-1	6	1/4	25×13×—	1×1/2×—	24,000	297	11 11/16	0.8	1.8	0.4	14.1	PTor NPT 1/4	9.5	3/8
FG-26L-1BF	6	1/4	25×13×—	1×1/2×—	24,000	306	12 3/64	0.9	2.0	0.4	14.1	PTor NPT 1/4	9.5	3/8

* Standard type is Side Exhaust Cover type.
Please specify Front or Side Exhaust Cover type in ordering.

The performance figures are at 0.63MPa (6.3bar).

⚠ Refer to "The Instructions and Warning for Safety Use" enclosed in each tool box.

FUJI AIR TOOLS CO., LTD.

2-1-14 Kamiji, Higashinari-ku, Osaka 537-0003, Japan

Tel : (06) 6972-2335

Fax : (06) 6972-2250

BOLT & NUT SETTERS
SCREW DRIVERS

ABRASIVE TOOLS

DRILLS · TAPPERS

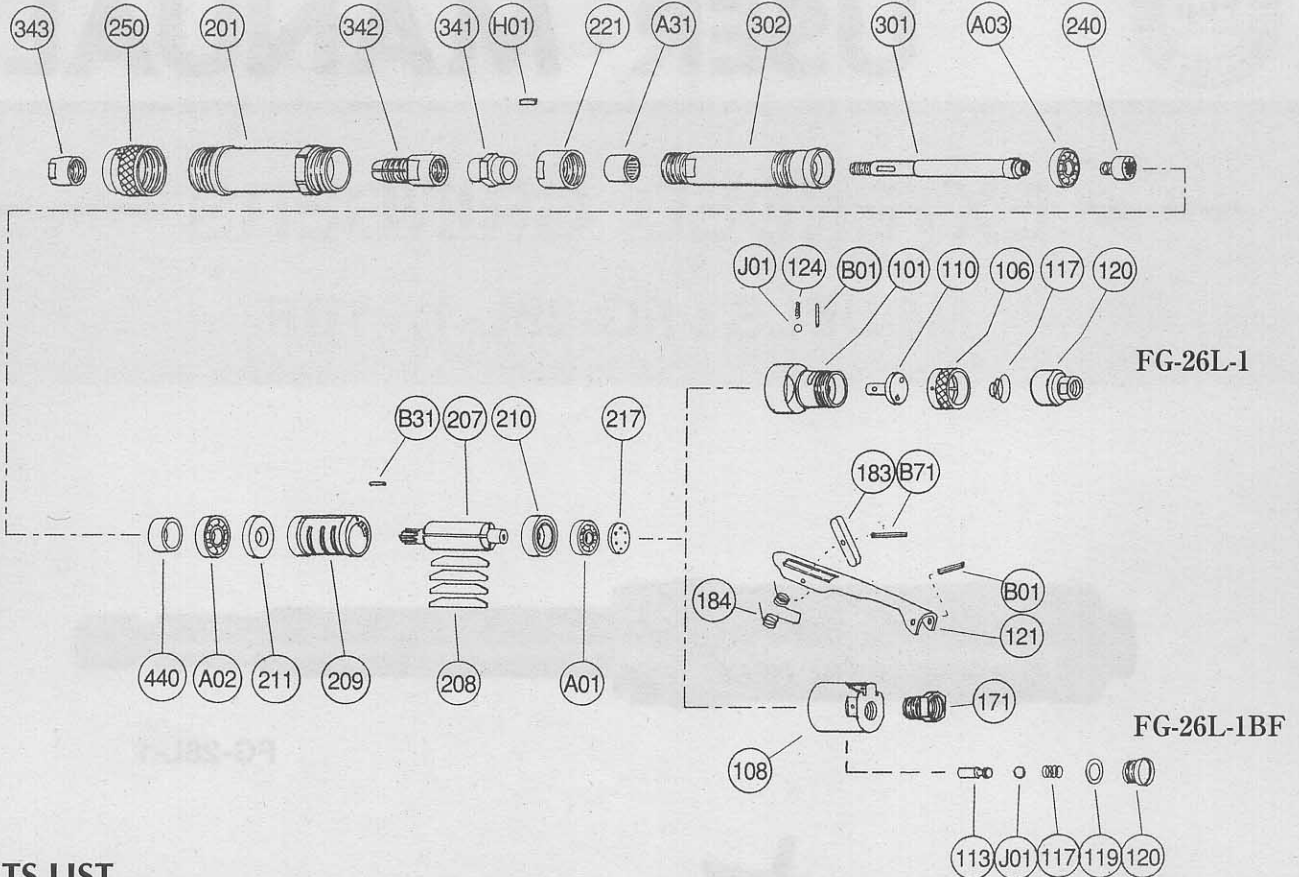
PERCUSSION TOOLS

AIR MOTORS & OTHERS

OTHER PRODUCTS

PARTS LIST MODEL: FG-26L-1, -1BF

EXPLODED VIEW



PARTS LIST

Index No.	Parts No.	Parts Name	Qt.	Index No.	Parts No.	Parts Name	Qt.
FG-26L-1				FG-26L-1, FG-26L-1BF			
Ass'y No.	G-145001-00	Housing Cover Ass'y (PT)		201	G-150201-00	Housing	1
Ass'y No.	G-145001-02	Housing Cover Ass'y (NPT)		207	G-150207-00	Rotor	1
101	G-145101-00	Housing Cover	1	208	G-108208-00	Rotor Blade	4
106	G-005106-01	Throttle Valve Handle	1	209	G-108209-00	Cylinder	1
110	G-005110-00	Throttle Valve	1	(B31)	SP-26	Spring Pin	1
117	G-042117-00	Throttle Valve Spring	1	210	G-108210-00	Cylinder Upper Plate	1
120	G-005120-00	Throttle Valve Cover (PT)	1	211	G-144211-00	Cylinder Lower Plate	1
	G-005120-01	Throttle Valve Cover (NPT)	1	217	G-108217-00	Bearing Cover	1
124	G-005124-00	Knock Spring	1	221	G-150221-00	Spindle Bearing Cover	1
B01	NR-316.8	Needle Roller	1	240	G-008240-00	Coupling	1
J01	B-3	Ball	1	250	G-150250-00	Exhaust Cover (Side)	1
FG-26L-1BF					G-150250-01	Exhaust Cover (Front)	1
Ass'y No.	G-145003-06	Throttle Valve Body Ass'y (PT)		301	G-150301-00	Wheel Spindle	1
Ass'y No.	G-145003-08	Throttle Valve Body Ass'y (NPT)		302	G-150302-00	Wheel Spindle Case	1
108	G-145108-01	Throttle Valve Body	1	341	G-150341-00	Chuck Collar	1
113	G-144113-00	Throttle Valve Rod	1	342	G-144342-00	Collet (6mm)	1
117	D-021117-00	Throttle Valve Spring	1		G-144342-01	Collet (1/4")	1
119	D-021119-00	T.V. Cover Packing	1	343	G-144343-00	Collet Nut	1
120	D-021120-00	Throttle Valve Cover	1	440	G-008440-00	Ring	1
171	IB-3020S0	Inlet Bushing (PT)	1	A01	BB-606	Ball Bearing	1
	IB-302NS0	Inlet Bushing (NPT)	1	A02	BB-6000	Ball Bearing	1
B01	SP-320	Spring Pin	1	A03	BB-EE3	Ball Bearing	1
J01	B-5/16U	Urethane Ball	1	A31	NB-HK1015	Needle Bearing	1
Ass'y No.	A-122019-01	Lock Lever Ass'y		H01	K-32.512	Key	1
121	A-122121-00	Throttle Valve Lever	1				
183	G-144183-02	Lock Key	1				
184	G-144184-00	Lock Spring	1				
B71	SP-218	Spring Pin	1				

Ass'y No. denotes no. of the assembled parts comprising of more than 1 pc. of parts.
The related parts are shown in the thick frame.

Index No.209 is supplied together with parts shown in ().

Specify parts number and quantity in ordering.
 Standard Accessories : F-105.....14mm Open-End Wrench 2.