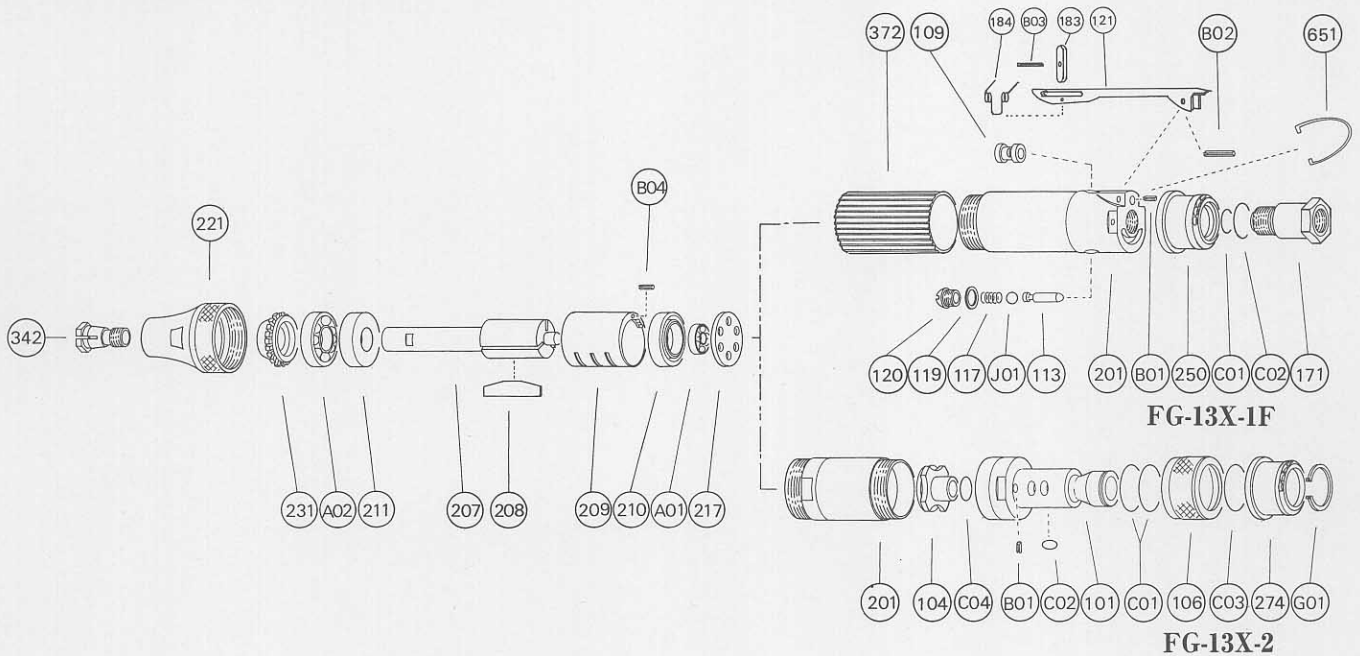


EXPLODED VIEW

PARTS LIST : FG-13X-1F
PARTS LIST : FG-13X-2

Index No.	Parts No.	Parts Name	Qt.
CP No.	G-187006-01	Housing CP	
201	G-187006-50	Housing	1
(109)	G-144109-00	Throttle Valve Bushing	1
113	G-144113-00	Throttle Valve Rod	1
117	G-029117-00	Throttle Valve Spring	1
119	D-021119-00	T.V. Cover Packing	1
120	D-021120-00	Throttle Valve Cover	1
171	G-146171-00	Inlet Joint (PT)	1
171	G-146171-01	Inlet Joint (NPT)	1
250	G-187250-00	Exhaust Cover	1
B01	SP-2.56	Spring Pin	1
B02	SP-320	Spring Pin	1
C01	O-S10	"O" Ring	1
C02	O-S16	"O" Ring	1
J01	B-5/16U	Ball	1
CP No.	G-144019-01	Locking Lever CP	
121	G-144121-02	Throttle Valve Lever	1
183	G-144183-02	Lock Key	1
184	G-144184-00	Lock Spring	1
B03	SP-218	Spring Pin	1
207	G-185207-00	Rotor	1
208	G-033208-00	Rotor Blade	3
209	G-003209-00	Cylinder	1
(B04)	SP-1.56	Spring Pin	1
210	G-185210-00	Cylinder Upper Plate	1
211	G-185211-00	Cylinder Lower Plate	1
217	G-143217-00	Bearing Cover	1
221	G-187221-00	Spindle Bearing Cover	1
229	G-187229-00	Bearing Spacer	1
342	G-185342-00	Collet (3mm)	1
342	G-185342-01	Collet (1/8)	1
342	G-185342-02	Collet (3.2mm)	1
372	G-185372-00	Plastic Cover	1
651	W-070651-00	Hanger (Horizontal)	1
A01	BB-624	Ball Bearing	1
A02	BB-EE3MN	Ball Bearing	1

Index No.	Parts No.	Parts Name	Qt.
CP No.	G-188001-00	Housing Cover CP	
101	G-188101-00	Housing Cover	1
104	G-188104-00	Bushing	1
106	G-137106-00	Throttle Valve Handle	1
274	G-188274-00	Exhaust Hose Joint	1
B01	SP-26	Spring Pin	1
C01	O-P21	"O" Ring	1
C02	O-P5	"O" Ring	1
C03	O-S22	"O" Ring	1
C04	O-P7	"O" Ring	1
G01	SR-SA19	Snap Ring (SA-19)	1
201	G-188201-00	Housing	1
207	G-185207-00	Rotor	1
208	G-033208-00	Rotor Blade	3
209	G-003209-00	Cylinder	1
(B04)	SP-1.56	Spring Pin	1
210	G-185210-00	Cylinder Upper Plate	1
211	G-185211-00	Cylinder Lower Plate	1
217	G-105217-00	Bearing Cover	1
221	G-187221-00	Spindle Bearing Cover	1
229	G-187229-00	Bearing Spacer	1
342	G-185342-00	Collet (3mm)	1
342	G-185342-01	Collet (1/8)	1
342	G-185342-02	Collet (3.2mm)	1
A01	BB-624	Ball Bearing	1
A02	BB-EE3MN	Ball Bearing	1

CP No. denotes the assembled parts comprising of more than 1 pc. of parts. The related parts are shown in the thick frame.

#201 and 209 are applied together with the parts shown in ().

Specify parts number and quantity in ordering.

■ Standard Accessories : 1 pc. Open-End Wrench, 1 pc. Hex. Wrench,
1 pc. Air Hose, 1 pc. Air Exhaust Hose.

MANUFACTURER :
FUJI AIR TOOLS CO., LTD.

1-14, Kamiji 2-chome, Higashinari-ku, Osaka 537, Japan
Tel. : (06) 972-2335 (Overseas Dept) Fax : (06) 972-2250