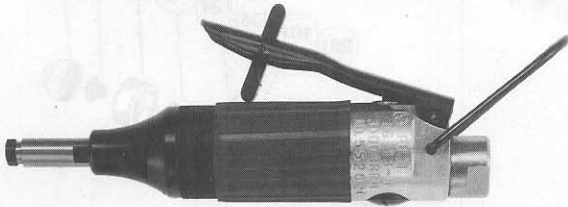




USER MANUAL

DIE GRINDERS

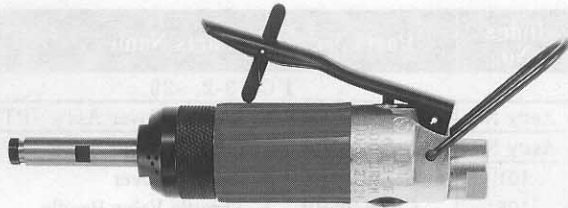
MODELS : FG-13-1F, -2, -10F, -20



FG-13-1F



FG-13-2



FG-13-10F



FG-13-20

SPECIFICATIONS

Model	Collet Size		Capacity				Rotational Frequency min ⁻¹	Overall Length		Mass		Max. Air Consumption		Air Inlet Thread Size	Air Hose Size	
			Grinding Wheel		Burr Head											
	mm	in	mm	in	mm	in		mm	in	kg	lb	m ³ /min	ft ³ /min		in	mm
FG-13-1F	3	1/8	13	1/2	10	3/8	30,000	158	6 7/32	0.38	0.84	0.25	8.8	PT or NPT 1/4	6.3	1/4
FG-13-2	3	1/8	13	1/2	10	3/8	30,000	150	5 29/32	0.44	0.97	0.25	8.8	PT or NPT 1/4	6.3	1/4
FG-13-10F	3	1/8	13	1/2	10	3/8	30,000	158	6 7/32	0.36	0.79	0.25	8.8	PT or NPT 1/4	6.3	1/4
FG-13-20	3	1/8	13	1/2	10	3/8	30,000	150	5 29/32	0.43	0.95	0.25	8.8	PT or NPT 1/4	6.3	1/4

The performance figures are at 0.63MPa (6.3bar).

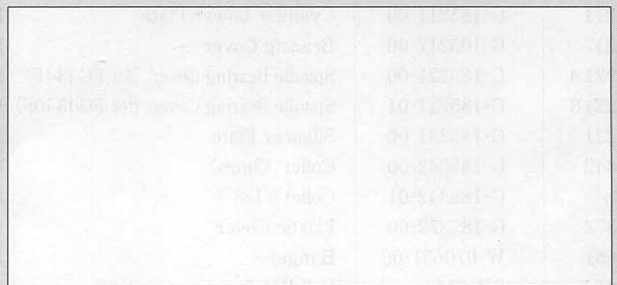
⚠ Refer to "The Instructions and Warning for Safety Use" enclosed in each tool box.

FUJI AIR TOOLS CO., LTD.

2-1-14 Kamiji, Higashinari-ku, Osaka, 537-0003 Japan

Tel : (06) 6972-2335

Fax : (06) 6972-2250



BOLT & NUT SETTERS
SCREW DRIVERS

ABRASIVE TOOLS

DRILLS • TAPPERS

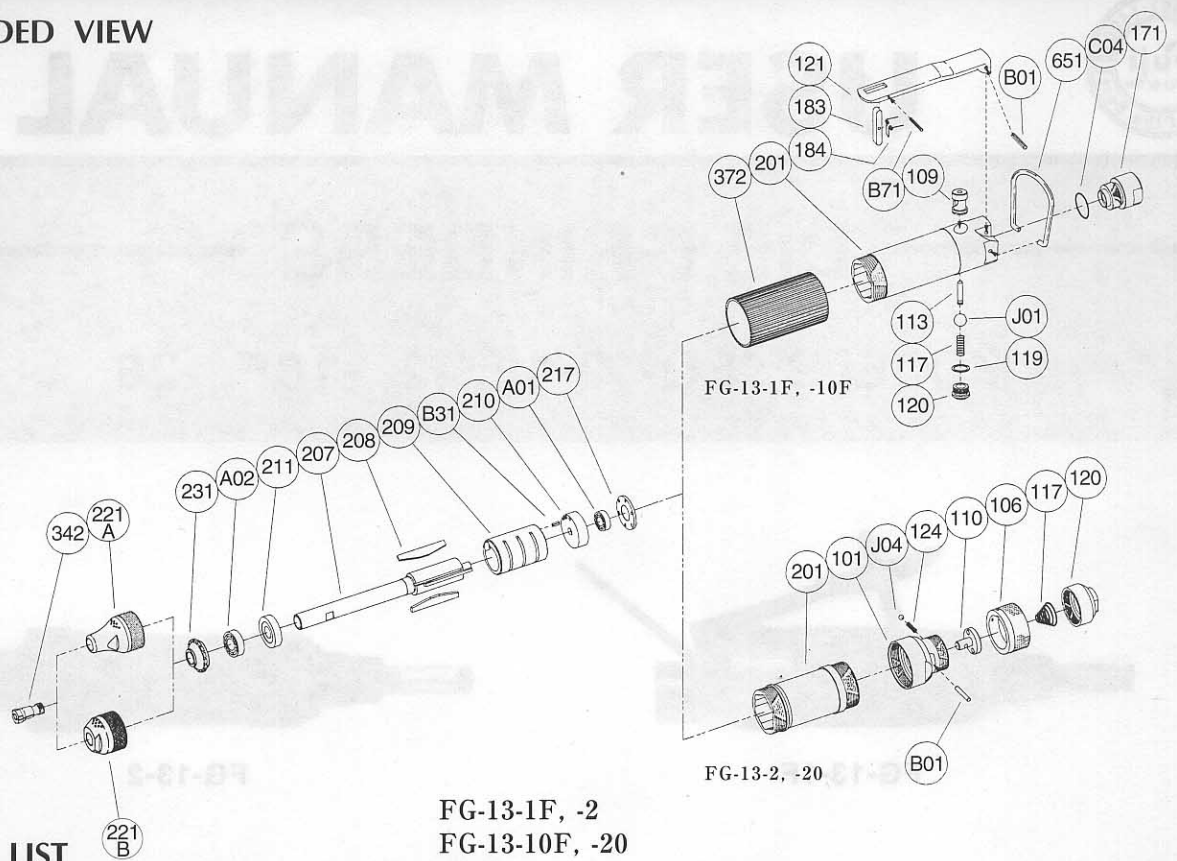
PERCUSSION TOOLS

AIR MOTORS & OTHERS

OTHER PRODUCTS

PARTS LIST MODEL: FG-13-1F, -2, -10F, -20

EXPLODED VIEW



PARTS LIST

FG-13-1F, -2 FG-13-10F, -20

Index No.	Parts No.	Parts Name	Qt.
FG-13-1F, -10F			
Ass'y No.	G-185006-01	Housing Ass'y <PT>	
Ass'y No.	G-185006-03	Housing Ass'y <NPT>	
201	G-185006-50	Housing	1
(109)	G-144109-00	Throttle Valve Bushing	1
113	G-144113-00	Throttle Valve Rod	1
117	G-029117-00	Throttle Valve Spring	1
119	D-021119-00	T.V. Cover Packing	1
120	D-021120-00	Throttle Valve Cover	1
171	G-185171-00	Inlet Bushing <PT>	1
	G-185171-01	Inlet Bushing <NPT>	1
B01	SP-320	Spring Pin	1
C04	O-S14	"O" Ring	1
J01	B-5/16U	Urethane Ball	1
Ass'y No.	G-144019-01	Lock Lever Ass'y	
121	G-144121-02	Throttle Valve Lever	1
183	G-144183-02	Lock Key	1
184	G-144184-00	Lock Spring	1
B71	SP-218	Spring Pin	1
207	G-185207-00	Rotor	1
208	G-033208-00	Rotor Blade	3
209	G-003209-00	Cylinder	1
(B31)	SP-1.56	Spring Pin	1
210	G-185210-00	Cylinder Upper Plate	1
211	G-185211-00	Cylinder Lower Plate	1
217	G-105217-00	Bearing Cover	1
221A	G-185221-00	Spindle Bearing Cover <for FG-13-1F>	1
221B	G-185221-01	Spindle Bearing Cover <for FG-13-10F>	1
231	G-185231-00	Silencer Plate	1
342	G-185342-00	Collet <3mm>	1
	G-185342-01	Collet <1/8" >	1
372	G-185372-00	Plastic Cover	1
651	W-070651-00	Hanger	1
A01	BB-624	Ball Bearing	1
A02	BB-EE3MN	Ball Bearing	1

Index No.	Parts No.	Parts Name	Qt.
FG-13-2, -20			
Ass'y No.	G-186001-00	Housing Cover Ass'y <PT>	
Ass'y No.	G-186001-01	Housing Cover Ass'y <NPT>	
101	G-186101-00	Housing Cover	1
106	G-005106-01	Throttle Valve Handle	1
110	G-005110-00	Throttle Valve	1
117	G-042117-00	Throttle Valve Spring	1
120	G-005120-00	Throttle Valve Cover <PT>	1
	G-005120-01	Throttle Valve Cover <NPT>	1
124	G-005124-00	Knock Spring	1
B01	NR-316.8	Needle Roller	1
J04	B-3	Ball	1
201	G-186201-00	Housing	1
207	G-185207-00	Rotor	1
208	G-033208-00	Rotor Blade	3
209	G-003209-00	Cylinder	1
(B31)	SP-1.56	Spring Pin	1
210	G-185210-00	Cylinder Upper Plate	1
211	G-185211-00	Cylinder Lower Plate	1
217	G-105217-00	Bearing Cover	1
221A	G-185221-00	Spindle Bearing Cover <for FG-13-2>	1
221B	G-185221-01	Spindle Bearing Cover <for FG-13-20>	1
231	G-185231-00	Silencer Plate	1
342	G-185342-00	Collet <3mm>	1
	G-185342-01	Collet <1/8" >	1
A01	BB-624	Ball Bearing	1
A02	BB-EE3MN	Ball Bearing	1

- Ass'y No. denotes no. of the assembled parts comprising of more than 1 pc. of parts. The related parts are shown in the thick frame.
- Index Nos. 201 and 209 are supplied together with parts shown in ().
- Specify parts number and quantity in ordering.

- Standard Accessories : F-101.....8mm Open-End Wrench 1.
- F-301.....8mm Hex. Wrench 1.