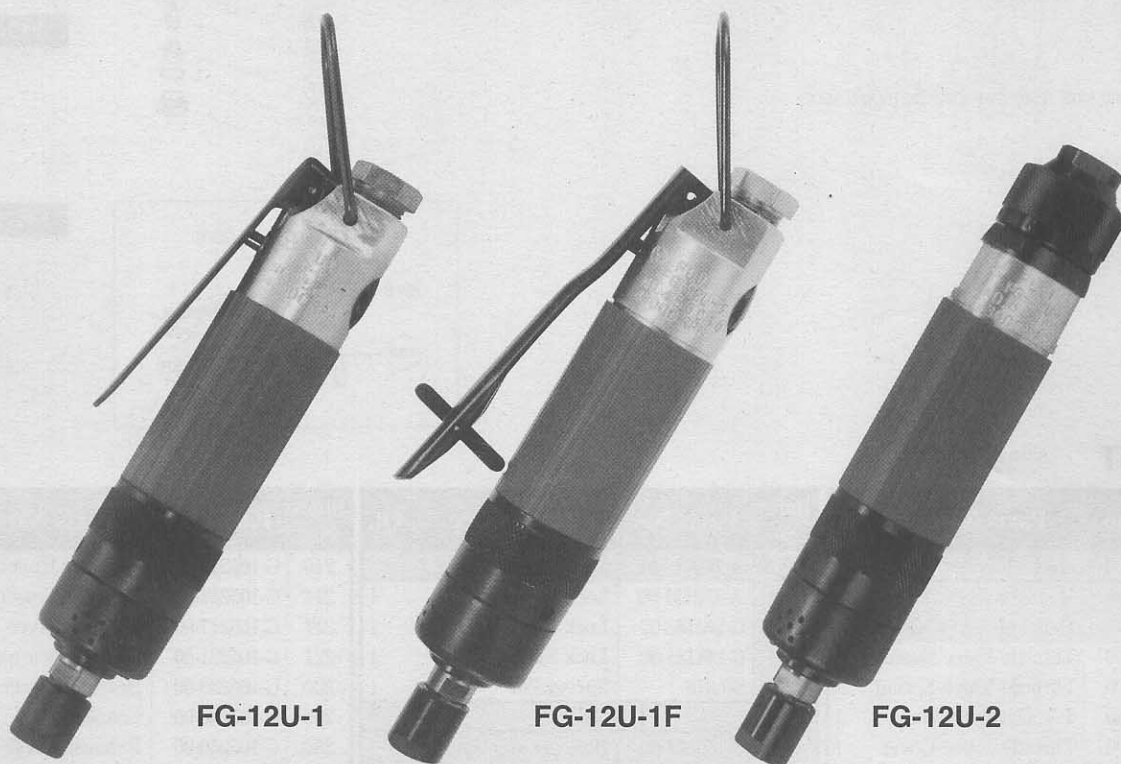




# USER MANUAL

## DIE GRINDERS

MODELS : FG-12U-1,-1F,-2



FG-12U-1

FG-12U-1F

FG-12U-2

### SPECIFICATIONS

Model	Collet Size		Capacity				Rotational Frequency	Overall Length		Mass		Air Consumption (At Load)		Air Inlet Thread Size	Air Hose Size	
			Grinding Wheel		Burr Head											
	mm	in	mm	in	mm	in	min <sup>-1</sup>	mm	in	kg	lb	m <sup>3</sup> /min	ft <sup>3</sup> /min	in	mm	in
FG-12U-1	3 , 6	1/8, 1/4	13	1/2	8	5/16	43,000	188	7 <sup>13</sup> / <sub>32</sub>	0.6	1.3	0.3	10.6	PT or NPT1/4	6.3	1/4
FG-12U-1F	3 , 6	1/8, 1/4	13	1/2	8	5/16	43,000	188	7 <sup>13</sup> / <sub>32</sub>	0.6	1.3	0.3	10.6	PT or NPT1/4	6.3	1/4
FG-12U-2	3 , 6	1/8, 1/4	13	1/2	8	5/16	43,000	190	7 <sup>31</sup> / <sub>64</sub>	0.6	1.3	0.3	10.6	PT or NPT1/4	6.3	1/4

The performance figures are at 0.63 MPa(6.3bar).



Refer to "The Instructions and Warning for Safety Use" enclosed in each tool box.

## FUJI AIR TOOLS CO., LTD.

2-1-14 Kamiji, Higashinari-ku, Osaka, 537-0003 Japan

Tel : (06) 6972-2335

Fax : (06) 6972-2250

BOLT & NUT SETTERS  
SCREW DRIVERS

ABRASIVE TOOLS

DRILLS · TAPPERS

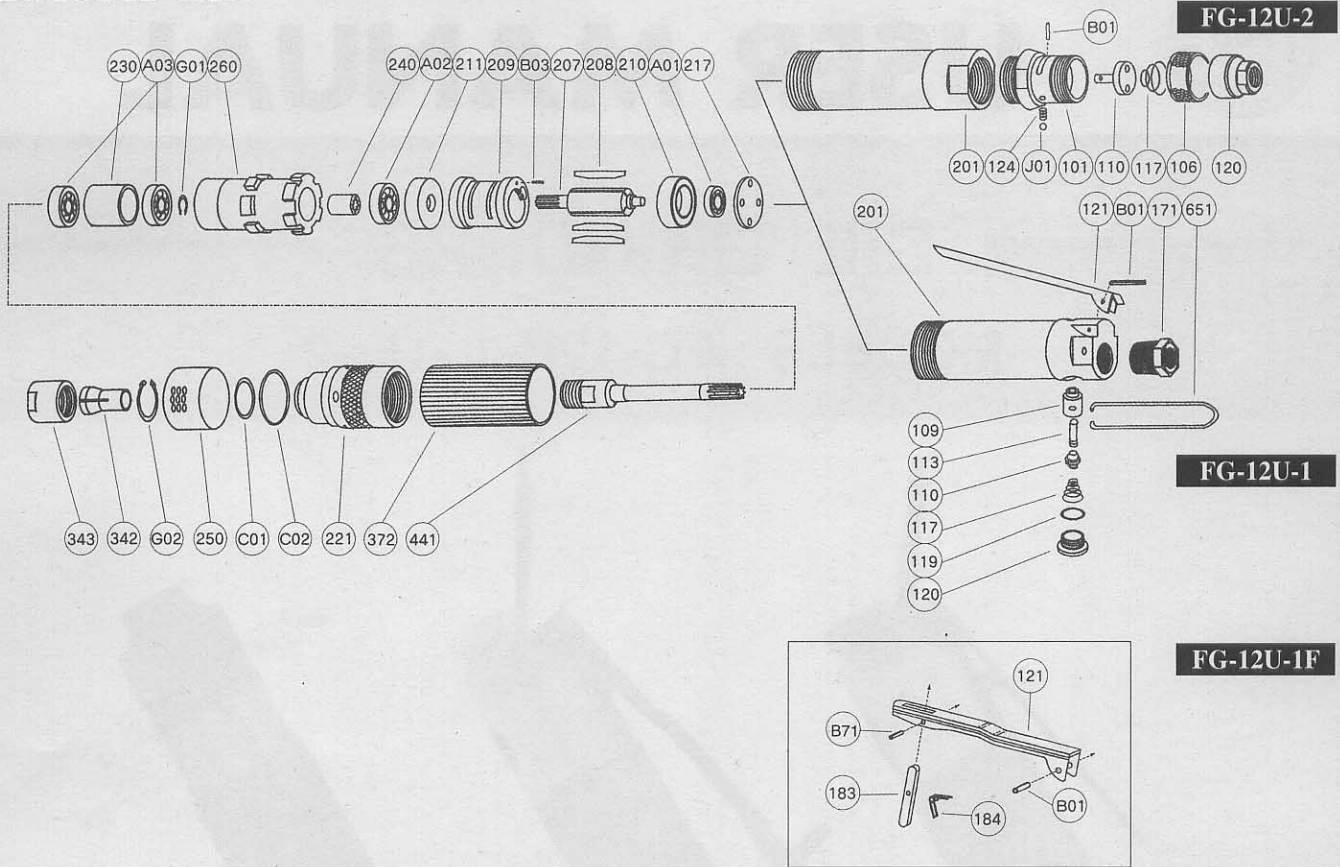
PERCUSSION TOOLS

AIR MOTORS & OTHERS

OTHER PRODUCTS

# PARTS LIST MODEL : FG-12U-1, -1F, -2

## EXPLODED VIEW



## PARTS LIST

Index No.	Parts No.	Parts Name	Qt.	Index No.	Parts No.	Parts Name	Qt.	Index No.	Parts No.	Parts Name	Qt.
<b>FG-12U-1</b>				<b>FG-12U-2</b>				<b>FG-12U-1F</b>			
Ass'y No.	G-105006-00	Housing Ass'y (PT)		Ass'y No.	A-122019-01	Lock Lever Ass'y		210	G-105210-00	Cylinder Upper Plate	1
Ass'y No.	G-105006-03	Housing Ass'y (NPT)		121	A-122121-00	Lock Lever	1	211	G-105211-00	Cylinder Lower Plate	1
109	G-105109-00	Throttle Valve Bushing	1	183	G-144183-02	Lock Key	1	217	G-105217-00	Bearing Cover	1
117	G-105117-00	Throttle Valve Spring	1	184	G-144184-00	Lock Spring	1	221	G-105221-00	Spindle Bearing Cover	1
119	G-028119-00	T.V. Cover Packing	1	B71	SP-218	Spring Pin	1	230	G-106230-00	Bearing Spacer (B)	1
120	G-028120-00	Throttle Valve Cover	1	<b>FG-12U-2</b>				240	G-105240-00	Coupling	1
121	G-028121-00	Throttle Valve Lever	1	Ass'y No.	G-105001-00	Housing Cover Ass'y (PT)		250	G-105250-00	Exhaust Cover (Side)	1
171	IB-3020S0	Inlet Bushing (PT)	1	Ass'y No.	G-105001-01	Housing Cover Ass'y (NPT)		260	G-105260-01	Bearing Case	1
	IB-302NS0	Inlet Bushing (NPT)	1	101	G-105101-00	Housing Cover	1	342	G-028342-07	Collet (6mm)	1
201	G-105201-02	Housing	1	106	G-005106-01	Throttle Valve Handle	1	343	G-105343-01	Collet Nut	1
B01	SP-320	Spring Pin	1	110	G-005110-00	Throttle Valve	1	372	G-105372-00	Plastic Cover	1
Ass'y No.	G-105008-00	Throttle Valve Rod Ass'y		117	G-042117-00	Throttle Valve Spring	1	441	G-106441-00	Spindle (B)	1
110	H-001110-02	Throttle Valve	1	120	G-005120-00	Throttle Valve Cover (PT)	1	651	W-070651-00	Hanger (For FG-12U-1,-1F)	1
113	G-105113-00	Throttle Valve Rod	1		G-005120-01	Throttle Valve Cover (NPT)	1	A01	BB-624	Ball Bearing	1
<b>FG-12U-1F</b>				124	G-005124-00	Knock Spring	1	A02	BB-607	Ball Bearing	1
Ass'y No.	G-105006-02	Housing Ass'y (PT)		B01	NR-316.8	Needle Roller	1	A03	BB-608MN	Ball Bearing	2
Ass'y No.	G-105006-04	Housing Ass'y (NPT)		J01	B-3	Ball	1	C01	O-S20	"O"Ring	1
109	G-105109-00	Throttle Valve Bushing	1	201	G-105201-03	Housing	1	C02	O-S22	"O"Ring	1
117	G-105117-00	Throttle Valve Spring	1	Following parts can be used interchangeably among FG-12U-1,-1F and -2.				G01	SR-S6	Snap Ring	1
119	G-028119-00	T.V. Cover Packing	1	207	G-105207-00	Rotor	1	G02	SR-S20	Snap Ring	1
120	G-028120-00	Throttle Valve Cover	1	208	G-105208-00	Rotor Blade	3	<b>OPTIONAL PART</b>			
171	IB-3020S0	Inlet Bushing (PT)	1	209	G-105209-00	Cylinder	1	250	G-105250-01	Exhaust Cover (Front)	1
	IB-302NS0	Inlet Bushing (NPT)	1	(B03)	SP-1.56	Spring Pin	1	342	G-028342-08	Collet (3mm)	1
201	G-105201-02	Housing	1						G-028342-04	Collet (1/8")	1
B01	SP-320	Spring Pin	1						G-028342-06	Collet (1/4")	1
Ass'y No.	G-105008-00	Throttle Valve Rod Ass'y									
110	H-001110-02	Throttle Valve	1								
113	G-105113-00	Throttle Valve Rod	1								

□ Ass'y No. denotes the assembled parts comprising of more than 1 pc. of parts. □ Specify parts number and quantity in ordering.

The related parts are shown in the thick frame.

■ Standard Accessories : F-104.....12mm Open-End Wrench 1..

□ #209 is supplied together with parts shown in ( ).

F-105.....14mm Open-End Wrench 1.