



# USER MANUAL

## PENCIL GRINDER

MODELS : FG-06-1

BOLT & NUT SETTERS  
SCREW DRIVERS

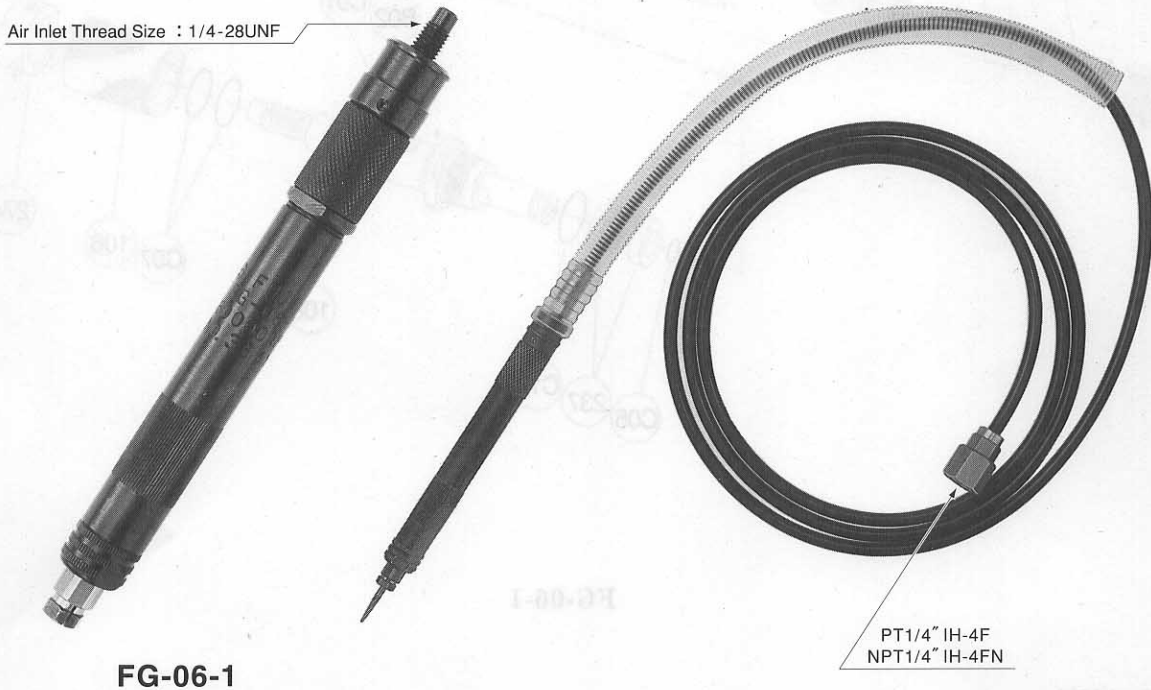
ABRASIVE TOOLS

DRILLS • TAPPERS

PERCUSSION TOOLS

AIR MOTORS & OTHERS

OTHER PRODUCTS



**FG-06-1**

### SPECIFICATIONS

Model	Collet Size		Capacity (Burr Head)		Rotational Frequency	Overall Length		Mass		Max. Air Consumption		Air Inlet Thread Size		Air Hose Size	
	mm	in	mm	in	min <sup>-1</sup>	mm	in	kg	lb	m <sup>3</sup> /min	ft <sup>3</sup> /min	in	mm	in	
FG-06-1	3	1/8	6	1/4	60,000	153	6 1/32	0.15	0.33	0.17	6.0	1/4-28UNF	4.0	5/32	

The performance figures are at 0.63MPa (6.3bar).

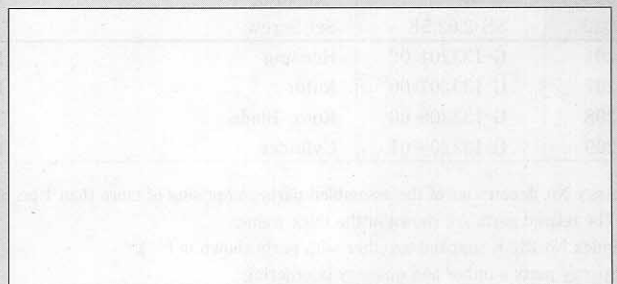
Refer to "The Instructions and Warning for Safety Use" enclosed in each tool box.

**FUJI AIR TOOLS CO., LTD.**

2-1-14 Kamiji, Higashinariku, Osaka 537-0003, Japan

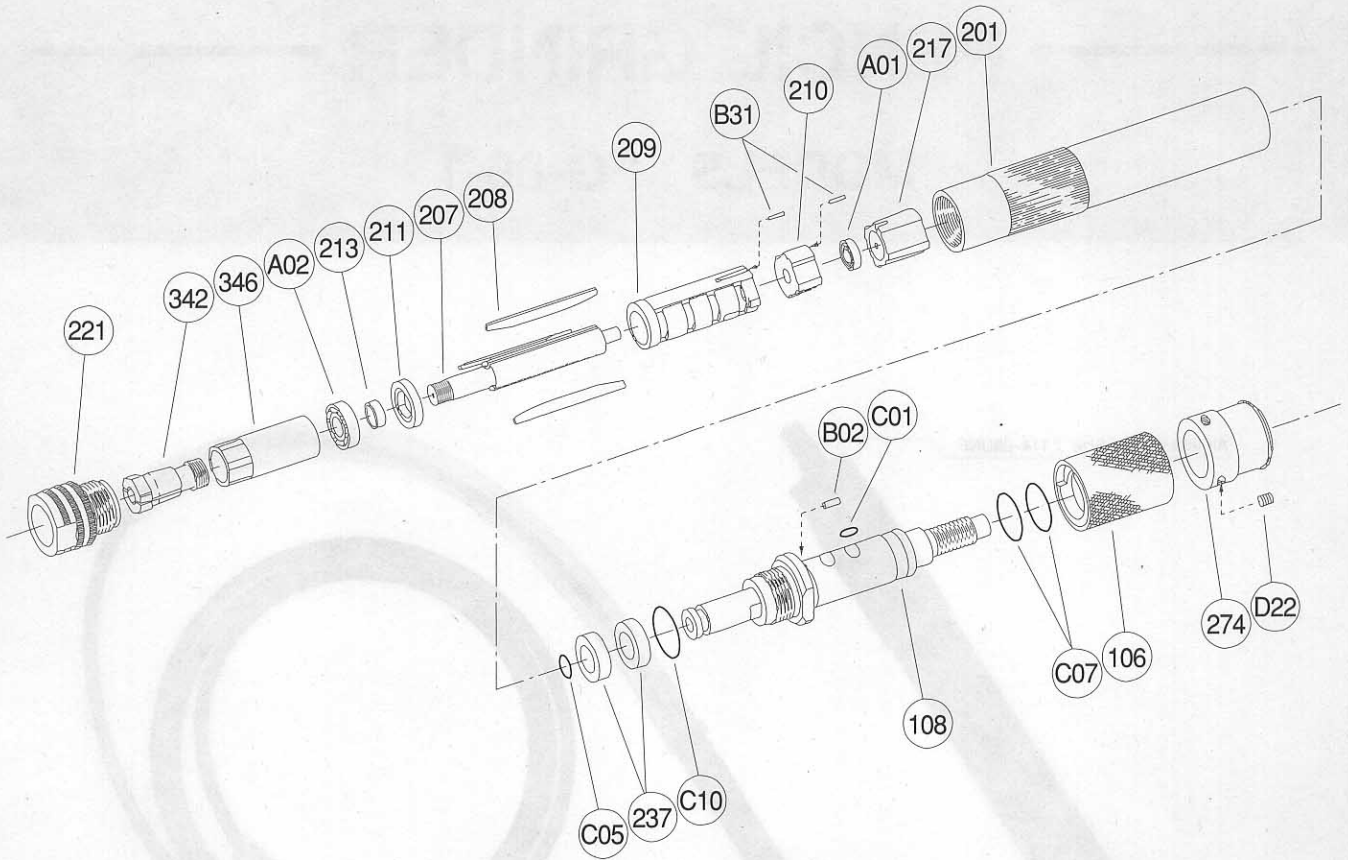
Tel : (06) 6972-2335

Fax : (06) 6972-2250



# PARTS LIST MODEL: FG-06-1

## EXPLODED VIEW



FG-06-1

## PARTS LIST

Index No.	Parts No.	Parts Name	Qt.	Index No.	Parts No.	Parts Name	Qt.
Ass'y No.	G-133003-00	Throttle Valve Body Ass'y		210	G-133210-00	Cylinder Upper Plate	1
106	G-133106-01	Throttle Valve Handle	1	(B31)	NR-0.84	Needle Roller	2
108	G-133108-02	Throttle Valve Body	1	211	G-133211-00	Cylinder Lower Plate	1
274	G-133274-01	Exhaust Hose Joint	1	213	G-133213-00	Adjusting Collar	1
B02	NR-1.53.8	Needle Roller	1	217	G-133217-01	Bearing Cover	1
C01	O-P4	"O" Ring	1	221	G-133217-00	Spindle Bearing Cover	1
C05	O-S4	"O" Ring	1	237	G-133237-00	Muffler Pad	2
C07	O-S11.2	"O" Ring	2	342	G-185342-00	Collet (3mm)	1
C10	O-S9	"O" Ring	1		G-185342-01	Collet (1/8")	1
D22	SS-2.62.5K	Set Screw	3	346	G-133346-01	Chuck Body	1
201	G-133201-02	Housing	1	A01	BB-693ZZ	Ball Bearing	1
207	G-133207-00	Rotor	1	A02	BB-685ZZ	Ball Bearing	1
208	G-133208-00	Rotor Blade	3	<b>OPTIONAL PART</b>			
209	G-133209-01	Cylinder	1	342	G-185342-02	Collet (3.2mm)	1

- Ass'y No. denotes no. of the assembled parts comprising of more than 1 pc. of parts.  
The related parts are shown in the thick frame.
- Index No. 210 is supplied together with parts shown in ( ).
- Specify parts number and quantity in ordering.

■ Standard Accessories :

- F-301..... 8mm Hex. Wrench 1.
- F-304..... 9mm Hex. Wrench 1.
- IH-4F (PT)..... Inlet Hose 1.
- IH-4FN (NPT)..... Inlet Hose 1.
- EH-30A..... Exhaust Hose 1.