



USER MANUAL

ANGLE GRINDERS

MODELS : FA-9C-3, -3M, -4 & -4M

FA-9C-3, -4



FA-9C-3M, -4M



SPECIFICATIONS

Model	Capacity						Spindle Thread Size	Rotational Frequency	Angle Head Height		Overall Length		Mass		Air Consumption (At Load)	
	Grinding Wheel		Sanding Disc		Cup Wire Brush				mm	in	mm	in	kg	lb	m ³ /min	ft ³ /min
	mm	in	mm	in	mm	in										
FA-9C-3	230x9.5x22.2	9x3/8x7/8	230x-x22.2	9x-x7/8	150x-x15.8	6x-x5/8	5/8-11UNC(M)	4,500	112	4 ¹³ / ₃₂	309	12	4.8	10.6	1.40	50
FA-9C-3M	230x9.5x22.2	9x3/8x7/8	230x-x22.2	9x-x7/8	150x-x15.8	6x-x5/8	5/8-11UNC(M)	4,500	112	4 ¹³ / ₃₂	385	15	4.8	10.6	1.40	50
FA-9C-4	230x9.5x22.2	9x3/8x7/8	—	—	—	—	5/8-11UNC(M)	5,900	112	4 ¹³ / ₃₂	309	12	4.8	10.6	1.65	58
FA-9C-4M	230x9.5x22.2	9x3/8x7/8	—	—	—	—	5/8-11UNC(M)	5,900	112	4 ¹³ / ₃₂	385	15	4.8	10.6	1.65	58

Air Inlet Thread Size : PT or NPT 1/2". Air Hose Size : 12.7mm (1/2").

The performance figures are at 0.63 MPa (6.3 bar).

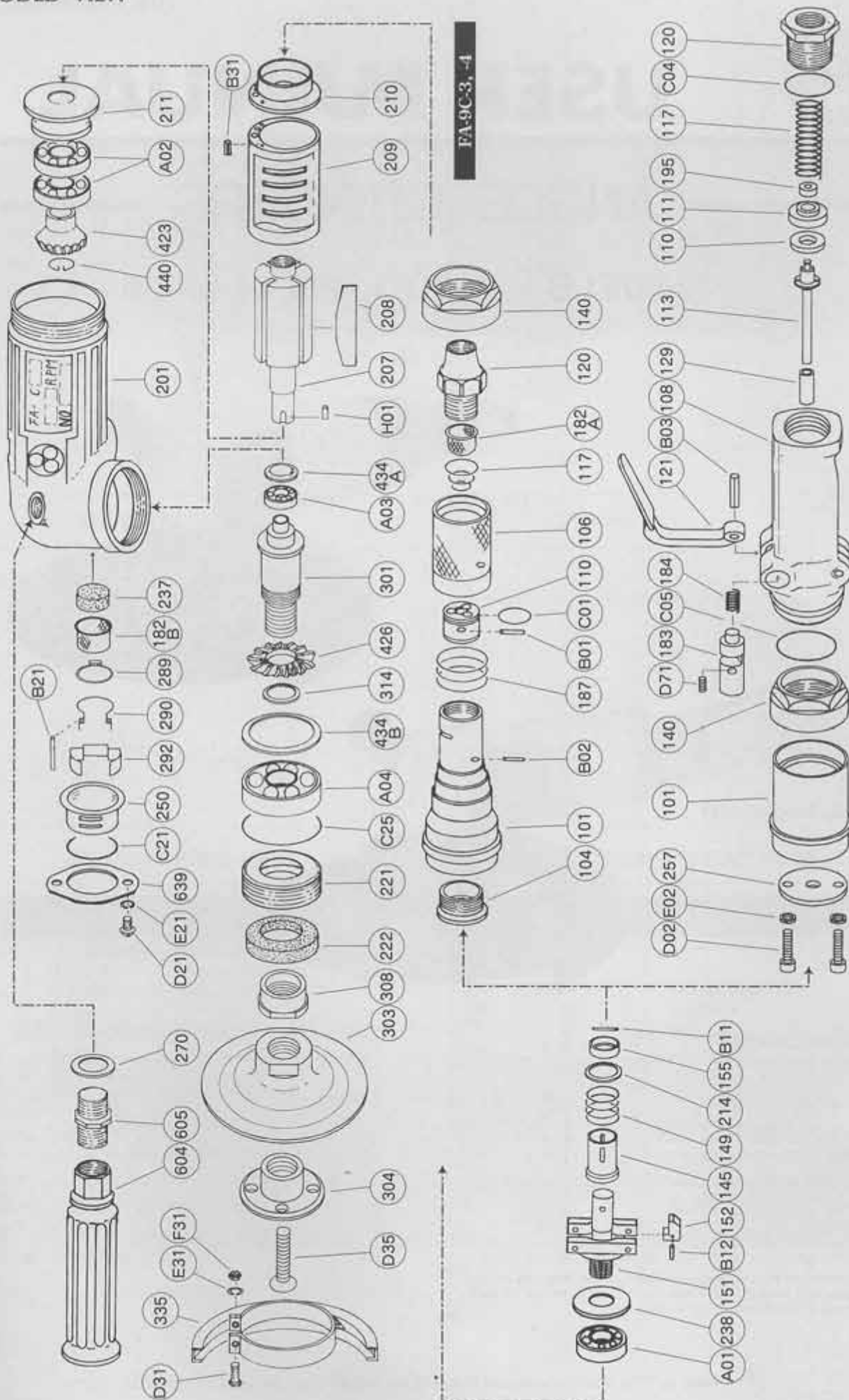
※The models are supplied for use of Grinding Wheel. When the models are used with Sanding Disc or Wire Brush, order separately the parts necessary to mount them on the models.



Refer to "The Instructions and Warning for Safety Use" enclosed in each tool box.

EXPLODED VIEW

FA-9C-3, -3M, -4 & -4M



FA-9C-3, -4

FA-9C-3M, -4M

PARTS LIST MODELS: FA-9C-3, -3M -4 & -4M

Index No.	Parts No.	Parts Name	Qt.	Index No.	Parts No.	Parts Name	Qt.
FA-9C-3, -4				290	A-109290-00	Muffler Spring	1
Assy No.	A-084001-01	Housing Cover Ass'y <PT>		292	A-109292-00	Muffler Plate Holder	1
Assy No.	A-084001-00	Housing Cover Ass'y <NPT>		B21	SP-325	Spring Pin	1
101	A-084101-04	Housing Cover	1	C21	O-S46	"O" Ring	1
104	A-077104-01	Bushing	1	140	G-089140-00	Cup Nut <For FA-9C-3, -4>	1
106	A-077106-03	Throttle Valve Handle	1	145	A-077145-00	Governor Valve	1
110	A-077110-00	Throttle Valve	1	149	A-077149-00	Governor Valve Spring <For FA-9C-4, -4M>	1
117	A-077117-00	Throttle Valve Spring	1	149	A-084149-02	Governor Valve Spring <For FA-9C-3, -3M>	1
120	G-070120-00	Throttle Valve Cover <PT>	1	155	A-069155-00	Governor Valve Spring Holder	1
120	G-070120-N	Throttle Valve Cover <NPT>	1	201	A-111201-00	Housing	1
182A	W-057182-00	Strainer	1	207	A-111207-00	Rotor	1
187	A-077187-01	Throttle Valve Handle Spring	1	208	A-111208-00	Rotor Blade	4
B01	NR-415	Needle Roller	1	209	A-084209-00	Cylinder	1
B02	NR-413	Needle Roller	1	(B31)	SP-38	Spring Pin	1
C01	O-S22	"O" Ring	1	210	A-111210-00	Cylinder Upper Plate	1
FA-9C-3M, -4M				211	A-111211-00	Cylinder Lower Plate	1
Assy No.	A-100001-00	Housing Cover Ass'y		214	A-069214-00	Adjusting Washer <T=0.2> or	1
101	A-100101-01	Housing Cover	1		A-069214-01	Adjusting Washer <T=0.3> or	1
140	G-089140-00	Cup Nut	1		A-069214-02	Adjusting Washer <T=0.5>	1
257	A-100257-00	Washer	1	221	A-096221-00	Spindle Bearing Cover	1
C05	O-S44	"O" Ring	1	222	A-025222-00	Felt Ring	1
D02	CS-620	Cap Screw	2	238	A-109238-00	Bearing Cover 	1
E02	SW-6	Spring Washer	2	270	H-001270-00	Conical Spring Washer	1
Assy No.	A-100003-00	Throttle Valve Body Ass'y <PT>		301	A-111301-01	Wheel Spindle	1
Assy No.	A-100003-01	Throttle Valve Body Ass'y <NPT>		303	A-041303-A	Wheel Flange <A>	1
108	A-100003-50	Throttle Valve Body	1	304	A-100304-02	Wheel Flange 	1
(129)	A-078129-00	Throttle Valve Rod Bushing	1	308	A-096308-00	Spacer	1
117	A-078117-01	Throttle Valve Spring	1	314	A-109314-00	Wheel Spindle Washer <T=0.5> or 1	
120	A-078120-03	Throttle Valve Cover <PT>	1		A-109314-01	Wheel Spindle Washer <T=0.3> or 1	
120	A-078120-04	Throttle Valve Cover <NPT>	1		A-109314-02	Wheel Spindle Washer <T=0.2>	1
121	A-078121-00	Throttle Valve Lever	1	335	A-111335-03	Wheel Guard	1
183	A-078183-01	Lock Key	1	(D31)	HS-625	Hexagon Bolt	1
184	A-078184-00	Lock Spring	1	(E31)	SW-6	Spring Washer	1
B03	GP-520GCH	Grooved Pin	1	(F31)	N-6	Nut	1
C04	O-P28	"O" Ring	1	423	A-109423-00	Bevel Pinion	1
D71	SS-48	Set Screw	1	426	A-109426-00	Bevel Gear	1
Assy No.	A-078008-00	Throttle Valve Rod Ass'y		434A	A-084434-00	Bearing Washer	1
110	A-078110-01	Throttle Valve	1	434B	A-025434-00	Bearing Washer	1
111	A-078111-01	Throttle Valve Washer	1	440	A-109440-00	Ring	1
113	A-078113-01	Throttle Valve Rod	1	604	A-025604-02	Dead Handle	1
195	W-080195-00	Sub Throttle Valve	1	605	A-025605-00	Dead Handle Joint	1
FA-9C-3, -3M, -4 & -4M				639	A-109639-00	Exhaust Cover Holder	1
Assy No.	A-193010-01	Governor Weight Ass'y		A01	BB-6202MN	Ball Bearing	1
151	A-193151-00	Governor Cage	1	A02	BB-6202	Ball Bearing	2
152	G-088152-00	Governor Weight	2	A03	BB-6000	Ball Bearing	1
B12	GP-2.524GCH	Grooved Pin	2	A04	BB-6204	Ball Bearing	1
Assy No.	A-109012-00	Exhaust Cover Ass'y		B11	NR-2.515.8	Needle Roller	1
182B	W-014182-00	Strainer	1	C25	O-S44	"O" Ring	1
237	A-078237-00	Muffler Pad	1	D21	CS-510B	Cap Screw	2
250	A-109250-00	Exhaust Cover	1	D35	CS-635S	Cap Screw	1
289	A-093289-00	Muffler Plate	1	E21	SW-5	Spring Washer	2
				H01	K-4410F	Key	1

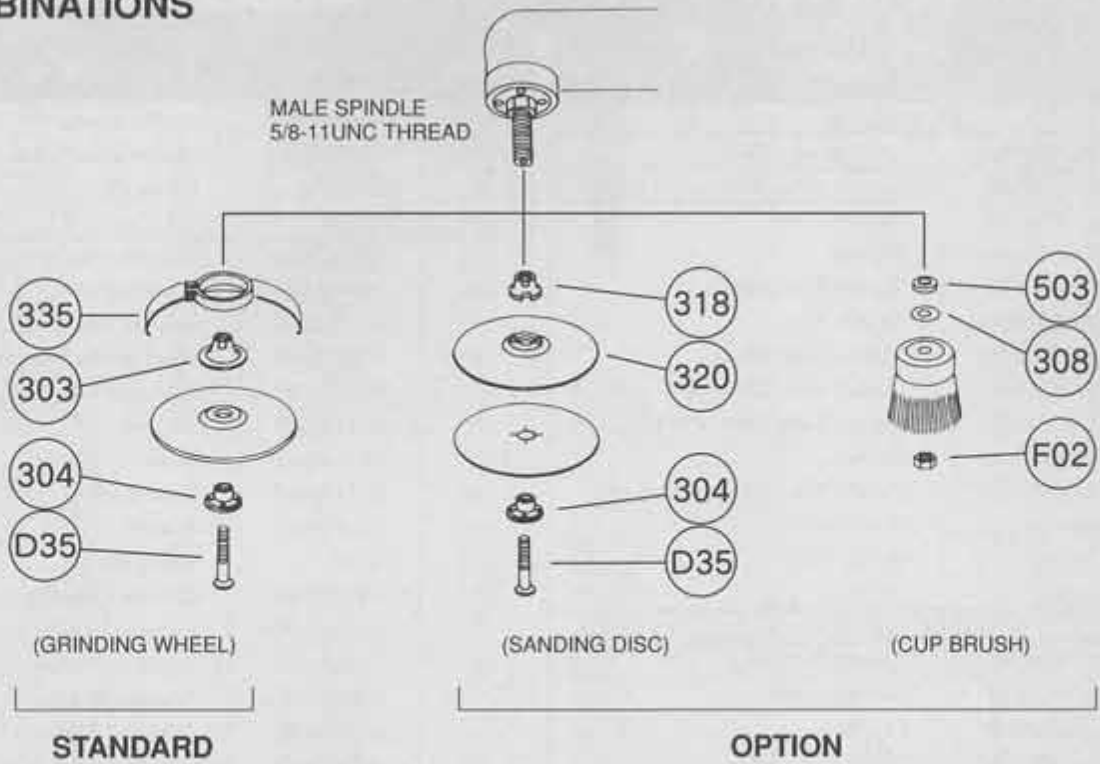
Assy No. denotes No. of the assembled parts comprising of more than 1 pc. of parts.
 Specify parts number and quantity in ordering.

The related parts are shown in the thick frame.
 ■ Standard Accessory : F-704 -----4mm Hex.Pin Wrench 1.

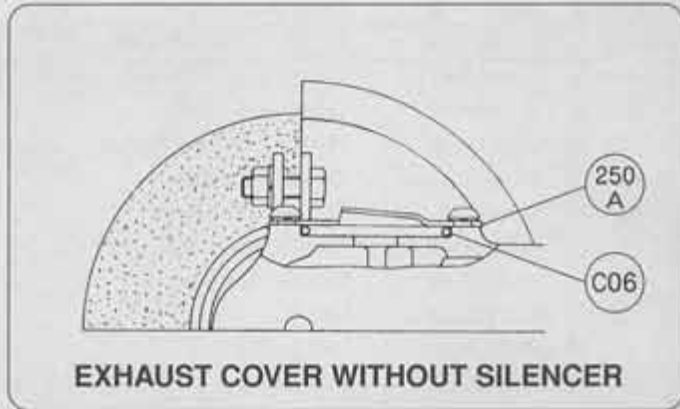
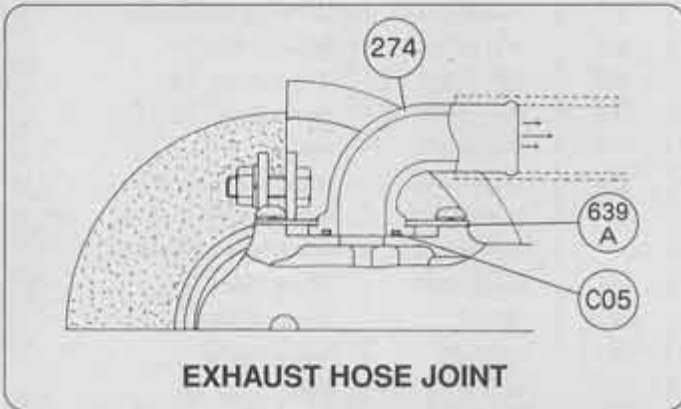
Index Nos.108, 209 and 335 are supplied together with parts shown in ().
 F-109 -----24mm Open-End Wrench 1.

F-203 -----32mm Open-End Pin Wrench 1.

COMBINATIONS



OPTIONAL PARTS



Index No.	Parts No.	Parts Name	Qt.
EXHAUST HOSE JOINT			
274	A-109274-00	Exhaust Hose Joint	1
639A	A-109639-01	Exhaust Cover Holder	1
C05	O-P16	"O" Ring	1
EXHAUST COVER WITHOUT SILENCER			
250A	A-109250-01	Exhaust Cover	1
C06	O-P44	"O" Ring	1
FOR FA-9C-3, -3M			
SANDING DISC			
318	A-087318-00	Rubber Pad Flange	1

Index No.	Parts No.	Parts Name	Qt.
320	RP-9-1	Rubber Pad	1
—	—	9" Paper	1
304	A-100304-02	Wheel Flange 	1
D35	CS-635S	Cap Screw	1
WIRE BRUSH			
503	A-020503-A	Spacer 	1
308	A-009308-00	Spacer	1
—	—	6" Cup Brush	1
F02	N-U 5/8	Nut	1

FUJI AIR TOOLS CO., LTD.

2-1-14 Kamiji, Higashinari-ku, Osaka, 537-0003 Japan

Tel : (06) 6972-2335

Fax : (06) 6972-2250