



USER MANUAL

ANGLE GRINDERS

MODELS : FA-7E-8V, -8VF



FA-7E-8VF



FA-7E-8V

SPECIFICATIONS

Model	Max.Dia (Grinding Wheel)		Rotational Frequency	Spindle Thread Size	Angle Head Height		Overall Length		Mass		Air Consumption At Load		Air Inlet Thread Size	Air Hose Size	
	mm	in			mm	in	mm	in	kg	lb	m ³ /min	ft ³ /min		mm	in
FA-7E-8V	180×6×22.2	7×1/4×7/8	8,400	U5/8-11(M)	101	3 31/32	272	10 45/64	3.1	6.9	1.40	49.5	PT or NPT 3/8	12.7	1/2
FA-7E-8VF	180×6×22.2	7×1/4×7/8	8,400	U5/8-11(M)	101	3 31/32	307	12 3/32	3.1	6.9	1.40	49.5	PT or NPT 3/8	12.7	1/2

The performance figures are at 0.63MPa (6.3bar).

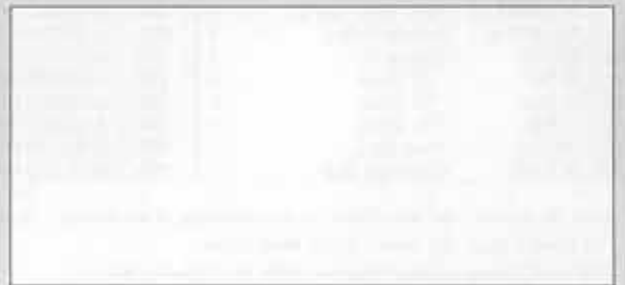
Refer to "The Instructions and Warning for Safety Use" enclosed in each tool box.

FUJI AIR TOOLS CO., LTD.

2-1-14 Kamiji, Higashinariku, Osaka 537-0003, Japan

Tei : (06) 6972-2335

Fax : (06) 6972-2250



BOLT & NUT SETTERS
SCREW DRIVERS

ABRASIVE TOOLS

DRILLS • TAPPERS

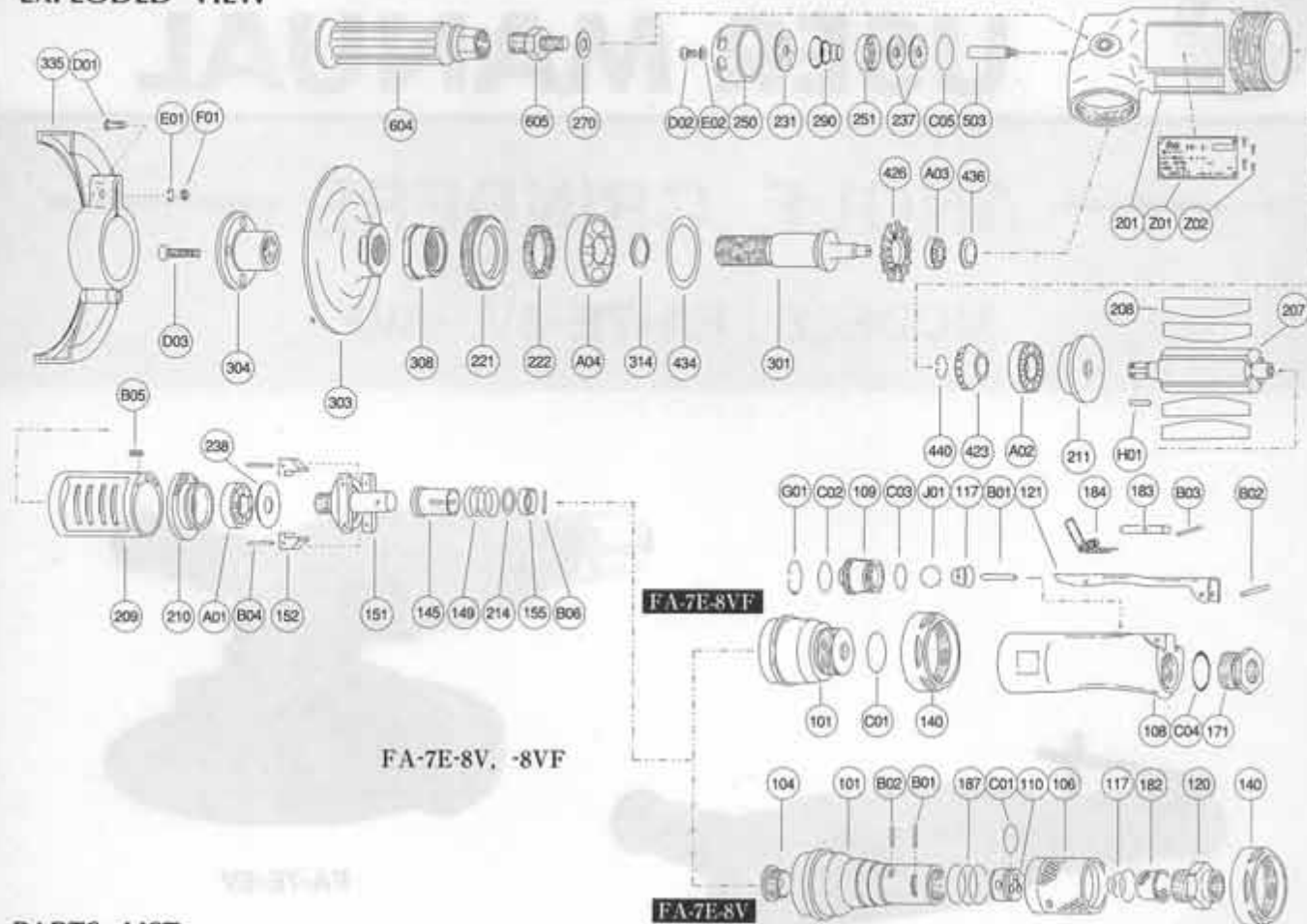
PERCUSSION TOOLS

AIR MOTORS & OTHERS

OTHER PRODUCTS

PARTS LIST MODEL: FA-7E-8V, -8VF

EXPLODED VIEW



PARTS LIST

Index No.	Parts No.	Parts Name	Qt.	Index No.	Parts No.	Parts Name	Qt.	Index No.	Parts No.	Parts Name	Qt.
FA-7E-8V											
Asy No. A-192019-00 Lock Lever Assy											
	121	A-192121-00	1		301	A-193301-01	1		301	A-193301-01	1
	183	G-144183-02	1		303	A-193303-01	1		(D01)	HS-625	1
	184	G-144184-00	1		304	A-193304-03	1		E01	SW-6	1
	B03	SP-218	1		308	A-193308-00	1		F01	N-6	1
					314	A-193314-00	1				
FA-7E-8V FA-7E-8VF											
Asy No. A-193010-00 Governor Weight Assy											
	151	A-193151-00	1		314	A-109314-01	1		423	A-109423-00	1
	152	G-053152-00	2		314	A-109314-02	1		426	A-109426-00	1
	B04	GP-2524GCH	2		314	A-109314-02	1		434	A-025434-00	1
	140	A-077140-00	1		335	A-193335-01	1		436	D-008436-00	1
	145	A-077145-00	1		604	A-025604-02	1		440	A-109440-00	1
	149	A-077149-01	1		605	A-108605-00	1		503	A-193503-00	1
	155	A-069155-00	1		A01	BB-6002MN	1		604	A-025604-02	1
	201	A-193201-00	1		A02	BB-6301	1		605	A-108605-00	1
	207	A-193207-00	1		A03	BB-608	1				
	208	A-193208-00	4		A04	BB-6204ZZ	1				
	209	A-193209-00	1		B06	NR-2.515.8	1				
	(B05)	SP-38	1		C01	O-S32	1				
	210	A-109210-00	1		C02	CS-58B	1				
	211	A-109211-00	1		D02	CS-58B	1				
	214	A-069214-00	1		D03	CS-630S	1				
	214	A-069214-01	1		E02	PW-5	1				
	214	A-069214-02	1		E01	K-4410F	1				
	221	A-193221-00	1		H01	K-4410F	1				
	222	A-193222-00	1		Z01	NP-0120	1				
	231	A-193231-00	1		Z02	NPN-0x3.2	4				
	237	A-193237-00	2								
	238	A-109238-00	1								
	250	A-193250-01	1								
	251	A-193251-00	1								
	270	H-001270-00	1								
	290	A-192290-00	1								
FA-7E-8VF											
Asy No. A-193001-02 Housing Cover Assy											
	101	A-193101-01	1		101	A-193101-01	1		104	A-193104-01	1
	140	A-077140-00	1		140	A-077140-00	1		108	A-077108-01	1
	C01	O-S29	1		C01	O-S16	1		171	A-192171-00	1
Asy No. A-192003-01 Throttle Valve Body Assy											
	108	A-192108-01	1		108	A-192108-01	1		187	A-077187-01	1
	109	A-192109-00	1		109	A-192109-00	1		B01	NR-415	1
	117	A-192117-00	1		117	A-192117-00	1		B02	NR-413	1
	171	A-192171-00	1		171	A-192171-00	1		C01	O-S22	1
	171	A-192171-01	1								
	B01	NR-423FR	1								
	B02	SP-320	1								
	C02	O-S16	1								
	C03	O-S14	1								
	C04	O-P20	1								
	G01	SR-R20	1								
	J01	B-9/16U	1								

□ Assy No. denotes the assembled parts comprising of more than 1 pc. of parts.

The related parts are shown in the thick frame.

□ #209 and 335 are supplied together with parts shown in ().

□ Specify parts number and quantity in ordering.

■ Standard Accessories : F-704 4mm Hex. Pin Wrench 1.

F-109 24mm Open-End Wrench 1.

F-203 32mm Open-End Pin Wrench 1.