



USER MANUAL

ANGLE GRINDERS

MODELS : FA-7E-8, -8F



FA-7E-8

FA-7E-8F

SPECIFICATIONS

Model	Max.Dia (Grinding Wheel)		Max. Free Speed	Spindle Thread Size	Angle Head Height (about)		Overall Length (about)		Mass (about)		Air Consumption Under Load (about)		Air Inlet Thread Size	Air Hose Size	
	mm	in			mm	in	mm	in	kg	lb	Nm ² /min	NI ² /min		mm	in
FA-7E-8	180×6×22.2	7×1/4×7/8	8,400	U5/8-11(M)	101	3 31/32	294	11 37/64	3.1	6.9	1.40	49.5	3/8"	12.7	1/2
FA-7E-8F	180×6×22.2	7×1/4×7/8	8,400	U5/8-11(M)	101	3 31/32	329	12 61/64	3.1	6.9	1.40	49.5	3/8"	12.7	1/2

The performance figures are at 0.63MPa (6.3bar).

⚠ Refer to "The Instructions and Warning for Safety Use" enclosed in each tool box.

FUJI AIR TOOLS CO., LTD.

2-1-14 Kamiji, Higashinari-ku, Osaka, 537-0003 Japan

Tel : (06) 6972-2335

Fax : (06) 6972-2250

BOLT & NUT SETTERS
SCREW DRIVERS

ABRASIVE TOOLS

DRILLS · TAPPERS

PERCUSSION TOOLS

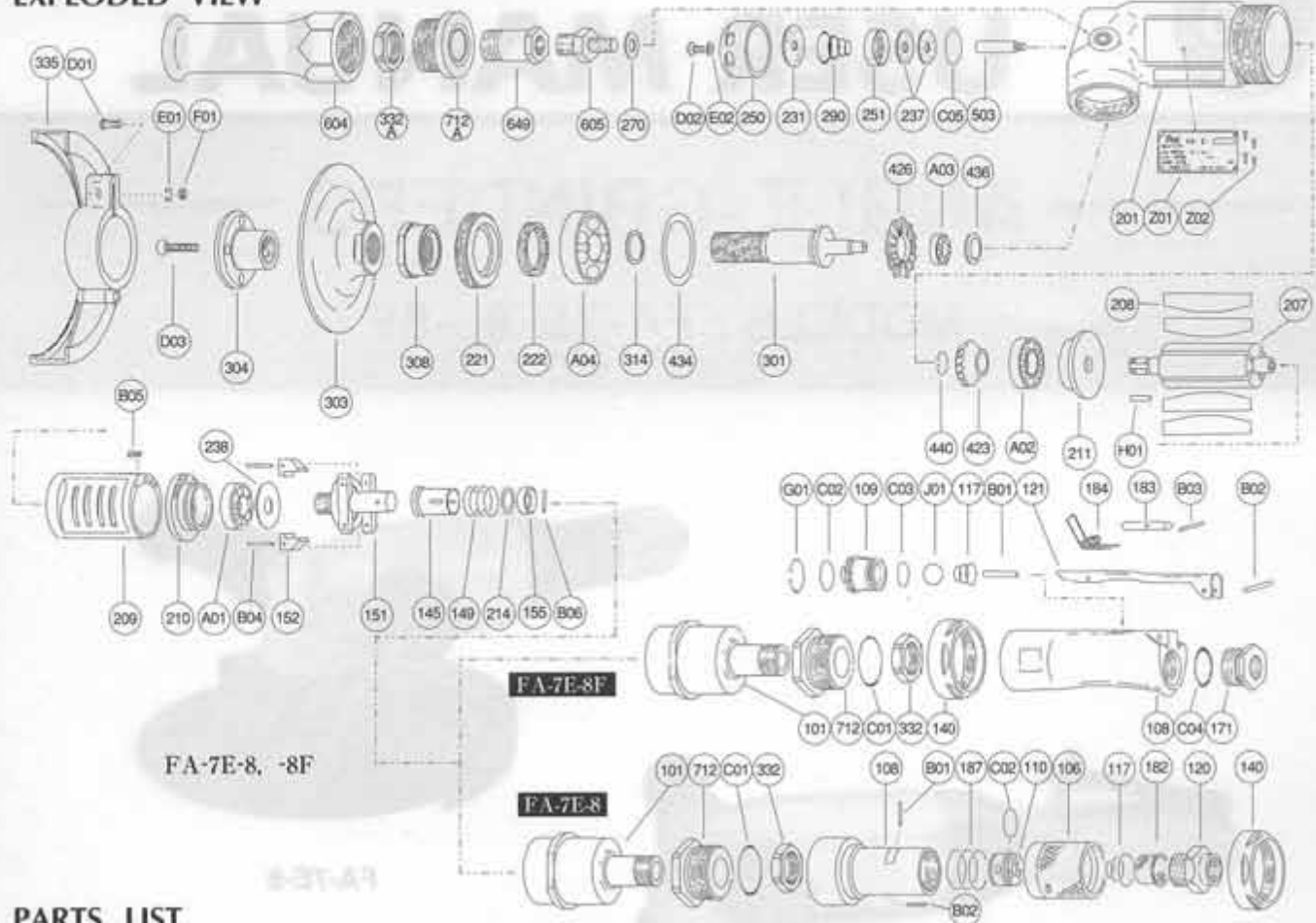
AIR MOTORS & OTHERS

OTHER PRODUCTS



PARTS LIST MODEL: FA-7E-8, -8F

EXPLODED VIEW



PARTS LIST

Index No.	Parts No.	Parts Name	Qt.	Index No.	Parts No.	Parts Name	Qt.	Index No.	Parts No.	Parts Name	Qt.
FA-7E-8											
CP No.	A-193001-00	Housing Cover CP		C04	O-P20	"O" Ring	1	237	A-193237-00	Muffler Pad	2
101	A-193101-00	Housing Cover	1	G01	SR-R20	Snap Ring	1	238	A-109238-00	Bearing Cover (B)	1
332	A-192332-00	Lock Nut	1	101	B-9/16U	Urethan Ball	1	250	A-193250-01	Exhaust Cover	1
712	A-192712-00	Damper	1	CP No. A-192019-00 Lock Lever CP				251	A-193251-00	Exhaust Valve	1
C01	O-S29	"O" Ring	1	121	A-192121-00	Lock Lever	1	270	H-001270-00	Conical Spring Washer	1
CP No.	A-193003-00	Throttle Valve CP		183	G-144183-02	Lock Key	1	290	A-192290-00	Muffler Spring	1
106	A-077106-03	Throttle Valve Handle	1	184	G-144184-00	Lock Spring	1	301	A-193301-01	Wheel Spindle	1
108	A-193108-00	Throttle Valve Body	1	B03	SP-218	Spring Pin	1	303	A-193303-01	Wheel Flange (A)	1
110	A-077110-00	Throttle Valve	1	FA-7E-8 FA-7E-8F				304	A-193304-03	Wheel Flange (B)	1
117	A-077117-00	Throttle Valve Spring	1	CP No.	A-193010-00	Governor Weight CP		308	A-193308-00	Spacer	1
120	A-077120-00	Throttle Valve Cover (PT)	1	151	A-193151-00	Governor Cage	1	314	A-109314-00	Wheel Spindle Washer (T=0.5)	1
120	A-077120-01	Throttle Valve Cover (NPT)	1	152	G-053152-00	Governor Weight	2	314	A-109314-01	Wheel Spindle Washer (T=0.3)	1
182	W-057182-00	Strainer	1	B04	GP-2524GCH	Grooved Pin	2	314	A-109314-02	Wheel Spindle Washer (T=0.2)	1
187	A-077187-01	Throttle Valve Handle Spring	1	CP No. A-192014-00 Dead Handle CP				335	A-193335-01	Wheel Guard	1
B01	NR-415	Needle Roller	1	604	A-192604-00	Dead Handle	1	(D01)	HS-625	Hexagon Bolt	1
B02	NR-413	Needle Roller	1	CP No. A-192039-00 Damper CP				E01	SW-6	Spring Washer	1
C02	O-S22	"O" Ring	1	332A	A-192332-00	Lock Nut	1	F01	N-6	Nut	1
FA-7E-8F											
CP No.	A-193001-01	Housing Cover CP		649	A-192649-00	Joint	1	423	A-109423-00	Bevel Pinion	1
101	A-193101-00	Housing Cover	1	712A	A-192712-01	Damper	1	426	A-109426-00	Bevel Gear	1
140	A-077140-00	Cup Nut	1	140	A-077140-00	Cup Nut (For FA-7E-8)	1	434	A-025434-00	Bearing Washer	1
332	A-192332-00	Lock Nut	1	145	A-077145-00	Governor Valve	1	436	D-008436-00	Bearing Holder	1
712	A-192712-00	Damper	1	149	A-077149-01	Governor Valve Spring	1	440	A-109440-00	Ring	1
C01	O-S29	"O" Ring	1	155	A-069155-00	Governor Valve Spring Holder	1	503	A-193503-00	Spacer (B)	1
CP No.	A-192003-01	Throttle Valve Body CP		201	A-193201-00	Housing	1	605	A-108605-00	Dead Handle Joint	1
108	A-192108-01	Throttle Valve Body	1	207	A-193207-00	Rotor	1	A01	BB-6002MN	Ball Bearing	1
109	A-192109-00	Throttle Valve Bushing	1	208	A-193208-00	Rotor Blade	4	A02	BB-6301	Ball Bearing	1
117	A-192117-00	Throttle Valve Spring	1	209	A-193209-00	Cylinder	1	A03	BB-608	Ball Bearing	1
171	A-192171-00	Inlet Joint (PT)	1	(B05)	SP-38	Spring Pin	1	A04	BB-6204ZZ	Ball Bearing	1
171	A-192171-01	Inlet Joint (NPT)	1	210	A-109210-00	Cylinder Upper Plate	1	B06	NR-2515.8	Needle Roller	1
B01	NR-423FR	Needle Roller	1	211	A-109211-00	Cylinder Lower Plate	1	C05	O-S32	"O" Ring	1
B02	SP-320	Spring Pin	1	214	A-069214-00	Adjusting Washer (T=0.2)	1	D02	CS-58B	Cap Screw	1
C02	O-S16	"O" Ring	1	214	A-069214-01	Adjusting Washer (T=0.3)	1	D03	CS-630S	Cap Screw	1
C03	O-S14	"O" Ring	1	214	A-069214-02	Adjusting Washer (T=0.5)	1	E02	PW-5	Plain Washer	1
				221	A-193221-00	Spindle Bearing Washer	1	H01	K-4410F	Key	1
				222	A-193222-00	Felt Ring	1	Z01	NP-0114	Name Plate	1
				231	A-193231-00	Silencer Plate	1	Z02	NPN-0x3.2	Screw Rivet	4

□ CP No. denotes the assembled parts comprising of more than 1 pc. of parts.

The related parts are shown in the thick frame.

□ #209 and 335 are supplied together with parts shown in ().

□ Specify parts number and quantity in ordering.

■ Standard Accessories : F-704 4mm Hex. Pin Wrench 1.

F-109 24mm Open-End Wrench 1.

F-203 32mm Open-End Pin Wrench 1.