



USER MANUAL

ANGLE GRINDERS

MODELS : FA-7E-5V, -5VF



FA-7E-5VF



FA-7E-5V

SPECIFICATIONS

| Model | Max. Dia | | | | | | Max. Free Speed min ⁻¹ | Spindle Thread Size in | Angle Head Height (about) | | Overall Length (about) | | Mass (about) | | Air Consumption Under Load (about) | |
|-----------|----------------|-----------|--------------|---------|----------------|---------|--------------------------------------|---------------------------|---------------------------|---------------------------------|------------------------|----------------------------------|--------------|-----|------------------------------------|----------------------|
| | Grinding Wheel | | Sanding Disc | | Cup Wire Brush | | | | mm | in | mm | in | kg | lb | Nm ³ /min | Nl ³ /min |
| | mm | in | mm | in | mm | in | | | | | | | | | | |
| FA-7E-5V | 180x6x22.2 | 7x1/4x7/8 | 180x-x22.2 | 7x-x7/8 | 100x-x15.8 | 4x-x5/8 | 7,000 | U5/8-11(M) | 101 | 3 ³¹ / ₃₂ | 272 | 10 ⁴⁵ / ₆₄ | 3.1 | 6.9 | 1.40 | 49.5 |
| FA-7E-5VF | 180x6x22.2 | 7x1/4x7/8 | 180x-x22.2 | 7x-x7/8 | 100x-x15.8 | 4x-x5/8 | 7,000 | U5/8-11(M) | 101 | 3 ³¹ / ₃₂ | 307 | 12 ³ / ₃₂ | 3.1 | 6.9 | 1.40 | 49.5 |

3/8" Air Inlet, 1/2" (12.7mm) Air Hose.

The performance figures are at 0.63MPa (6.3bar).

* The models are supplied for use of Grinding Wheel. When the models are used with Sanding Disc or Wire Brush, the parts necessary to mount them on the models are necessary. Order separately.



Refer to "The Instructions and Warning for Safety Use" enclosed in each tool box.

FUJI AIR TOOLS CO., LTD.

2-1-14 Kamiji, Higashinari-ku, Osaka, 537-0003 Japan

Tel : (06) 6972-2335

Fax : (06) 6972-2250

BOLT & NUT SETTERS
SCREW DRIVERS

ABRASIVE TOOLS

DRILLS · TAPPERS

PERCUSSION TOOLS

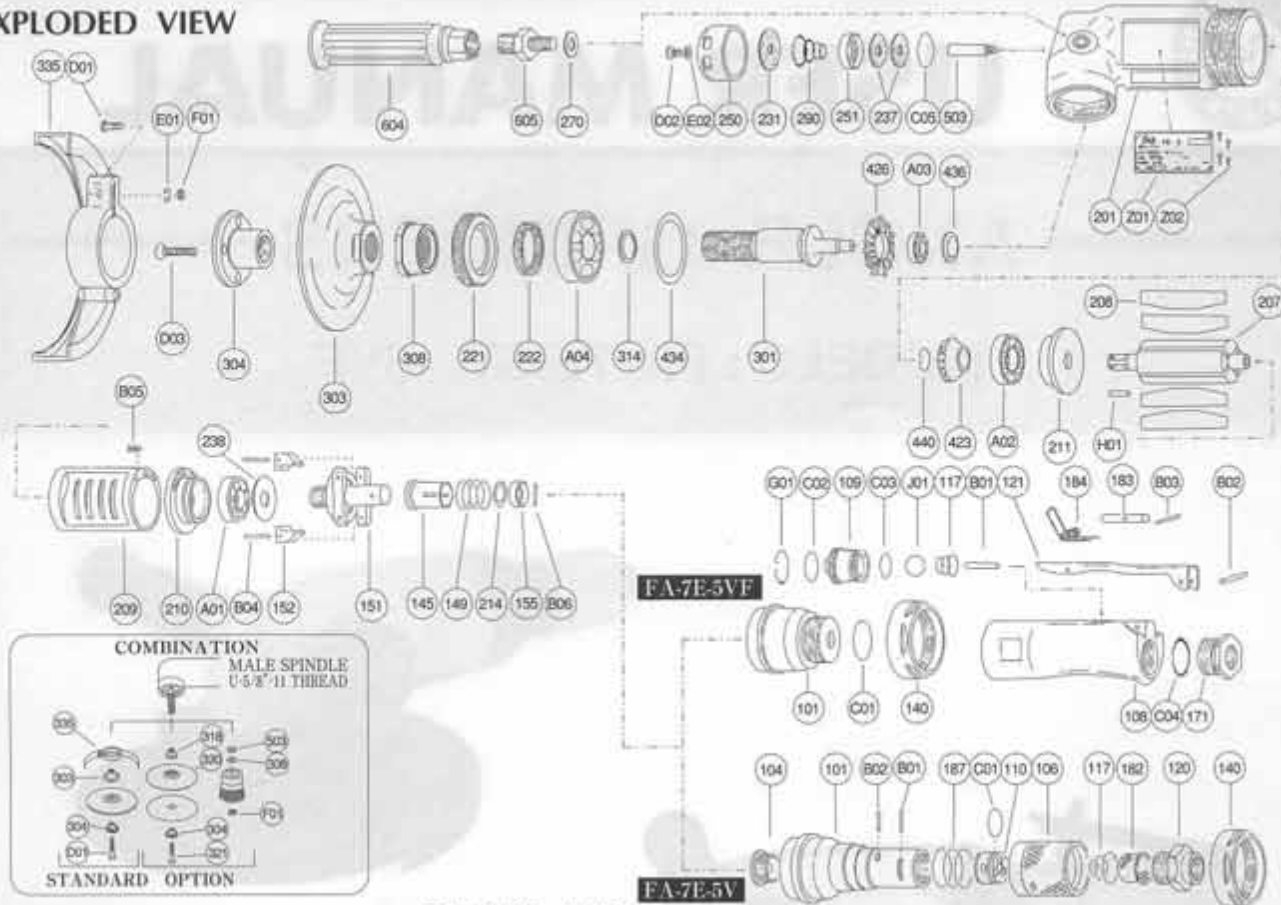
AIR MOTORS & OTHERS

OTHER PRODUCTS



PARTS LIST MODEL: FA-7E-5V, -5VF

EXPLODED VIEW



PARTS LIST

FA-7E-5V, -5VF

| Index No. | Parts No. | Parts Name | Qt. | Index No. | Parts No. | Parts Name | Qt. | Index No. | Parts No. | Parts Name | Qt. |
|------------------|-------------|------------------------------|-----|-----------------|-------------|------------------------------|-----|---------------------|-------------|--------------------|-----|
| FA-7E-5V | | | | FA-7E-5V | | | | FA-7E-5VF | | | |
| CP No. | A-077001-01 | Housing Cover CP | | CP No. | A-193010-00 | Governor Weight CP | | (D01) | HS-625 | Hexagon Bolt | 1 |
| 101 | A-077101-03 | Housing Cover | 1 | 151 | A-193151-00 | Governor Cage | 1 | (E01) | SW-6 | Spring Washer | 1 |
| 104 | A-077104-01 | Bushing | 1 | 152 | G-053152-00 | Governor Weight | 2 | (F01) | N-6 | Nut | 1 |
| 106 | A-077106-03 | Throttle Valve Handle | 1 | B04 | GP-2.524GCH | Grooved Pin | 2 | 423 | A-109423-00 | Bevel Pinion | 1 |
| 110 | A-077110-00 | Throttle Valve | 1 | 140 | A-077140-00 | Cup Nut (For FA-7E-5V) | 1 | 426 | A-109426-00 | Bevel Gear | 1 |
| 117 | A-077117-00 | Throttle Valve Spring | 1 | 145 | A-077145-00 | Governor Valve | 1 | 434 | A-025434-00 | Bearing Washer | 1 |
| 120 | A-077120-00 | Throttle Valve Cover (PT) | 1 | 149 | A-077149-03 | Governor Valve Spring | 1 | 436 | D-008436-00 | Bearing Holder | 1 |
| 120 | A-077120-01 | Throttle Valve Cover (NPT) | 1 | 155 | A-069155-00 | Governor Valve Spring Holder | 1 | 440 | A-109440-00 | Ring | 1 |
| 182 | W-057182-00 | Strainer | 1 | 201 | A-193201-00 | Housing | 1 | 503 | A-193503-00 | Spacer (B) | 1 |
| 187 | A-077187-01 | Throttle Valve Handle Spring | 1 | 207 | A-193207-00 | Rotor | 1 | 604 | A-025604-02 | Dead Handle | 1 |
| B01 | NR-415 | Needle Roller | 1 | 208 | A-193208-00 | Rotor Blade | 4 | 605 | A-108605-00 | Dead Handle Joint | 1 |
| B02 | NR-413 | Needle Roller | 1 | 209 | A-193209-00 | Cylinder | 1 | A01 | BB-6002MN | Ball Bearing | 1 |
| C01 | O-S22 | *O* Ring | 1 | (B05) | SP-38 | Spring Pin | 1 | A02 | BB-6301 | Ball Bearing | 1 |
| FA-7E-5VF | | | | 210 | A-109210-00 | Cylinder Upper Plate | 1 | A03 | BB-608 | Ball Bearing | 1 |
| CP No. | A-193001-02 | Housing Cover CP | | 211 | A-109211-00 | Cylinder Lower Plate | 1 | A04 | BB-6204ZZ | Ball Bearing | 1 |
| 101 | A-193101-01 | Housing Cover | 1 | 214 | A-069214-00 | Adjusting Washer (T=0.2) | 1 | B06 | NR-2.515.8 | Needle Roller | 1 |
| 140 | A-077140-00 | Cup Nut | 1 | 214 | A-069214-01 | Adjusting Washer (T=0.3) | 1 | C05 | O-S32 | *O* Ring | 1 |
| C01 | O-S29 | *O* Ring | 1 | 214 | A-069214-02 | Adjusting Washer (T=0.5) | 1 | D02 | CS-58B | Cap Screw | 1 |
| CP No. | A-192003-01 | Throttle Valve Body CP | | 221 | A-193221-00 | Spindle Bearing Washer | 1 | D03 | CS-630S | Cap Screw | 1 |
| 108 | A-192108-01 | Throttle Valve Body | 1 | 222 | A-193222-00 | Felt Ring | 1 | E02 | PW-5 | Plain Washer | 1 |
| 109 | A-192109-00 | Throttle Valve Bushing | 1 | 231 | A-193231-00 | Silencer Plate | 1 | H01 | K-4410F | Key | 1 |
| 117 | A-192117-00 | Throttle Valve Spring | 1 | 237 | A-193237-00 | Muffler Pad | 2 | Z01 | NP-0114 | Name Plate | 1 |
| 171 | A-192171-00 | Inlet Joint (PT) | 1 | 238 | A-109238-00 | Bearing Cover (B) | 1 | Z02 | NPN-Dx3.2 | Screw Rivet | 4 |
| 171 | A-192171-01 | Inlet Joint (NPT) | 1 | 250 | A-193250-01 | Exhaust Cover | 1 | OPTION | | | |
| B01 | NR-423FR | Needle Roller | 1 | 251 | A-193251-00 | Exhaust Valve | 1 | Sanding Disc | | | |
| B02 | SP-320 | Spring Pin | 1 | 270 | H-001270-00 | Conical Spring Washer | 1 | 304 | A-193304-01 | Wheel Flange (B) | 1 |
| C02 | O-S16 | *O* Ring | 1 | 290 | A-192290-00 | Muffler Spring | 1 | 318 | A-087318-00 | Rubber Pad Flange | 1 |
| C03 | O-S14 | *O* Ring | 1 | 301 | A-193301-01 | Wheel Spindle | 1 | 320 | RP-7 | Rubber Backing Pad | 1 |
| C04 | O-P20 | *O* Ring | 1 | 303 | A-193303-01 | Wheel Flange (A) | 1 | 321 | A-070321-00 | Detent Bolt | 1 |
| G01 | SR-R20 | Snap Ring | 1 | 304 | A-193304-03 | Wheel Flange (B) | 1 | Wire Brush | | | |
| 101 | B-9/16U | Urethan Ball | 1 | 308 | A-193308-00 | Spacer | 1 | 308 | A-009308-00 | Spacer | 1 |
| CP No. | A-192019-00 | Lock Lever CP | | 314 | A-109314-00 | Wheel Spindle Washer (T=0.5) | 1 | 503 | A-020503-A | Spacer (B) | 1 |
| 121 | A-192121-00 | Lock Lever | 1 | 314 | A-109314-01 | Wheel Spindle Washer (T=0.3) | 1 | F01 | N-U5/8 | Nut | 1 |
| 183 | G-144183-02 | Lock Key | 1 | 314 | A-109314-02 | Wheel Spindle Washer (T=0.2) | 1 | Wire Brush | | | |
| 184 | G-144184-00 | Lock Spring | 1 | 335 | A-193335-01 | Wheel Guard | 1 | 1 | | | |
| B03 | SP-218 | Spring Pin | 1 | | | | | | | | |

□ CP No. denotes the assembled parts comprising of more than 1 pc. of parts.

The related parts are shown in the thick frame.

□ #209 and 335 are supplied together with parts shown in ().

□ Specify parts number and quantity in ordering.

■ Standard Accessories : F-704 4mm Hex. Pin Wrench 1.

F-109 24mm Open-End Wrench 1.

F-203 32mm Open-End Pin Wrench 1.