



USER MANUAL

ANGLE GRINDERS

MODELS : FA-7E-3, -3F



FA-7E-3F



FA-7E-3

SPECIFICATIONS

Model	Max. Dia (Grinding Wheel)		Max. Free Speed min ⁻¹	Spindle Thread Size in	Angle Head Height (about)		Overall Length (about)		Mass (about)		Air Consumption Under Load (about)		Air Inlet Thread Size PT or NPT	Air Hose Size	
	mm	in			mm	in	kg	lb	Nm ³ /min	NI ³ /min	mm	in			
FA-7E-3	180×6×22.2	7×1/4×7/8	8,400	W1/2-16 (F)	87	3 27/64	294	11 37/64	3.1	6.9	1.40	49.5	3/8"	12.7	1/2
FA-7E-3F	180×6×22.2	7×1/4×7/8	8,400	W1/2-16 (F)	87	3 27/64	329	12 61/64	3.1	6.9	1.40	49.5	3/8"	12.7	1/2

The performance figures are at 0.63MPa (6.3bar).

Refer to "The Instructions and Warning for Safety Use" enclosed in each tool box.

FUJI AIR TOOLS CO., LTD.

2-1-14 Kamiji, Higashinari-ku, Osaka, 537-0003 Japan

Tel : (06) 6972-2335

Fax : (06) 6972-2250

BOLT & NUT SETTERS
SCREW DRIVERS

ABRASIVE TOOLS

DRILLS • TAPPERS

PERCUSSION TOOLS

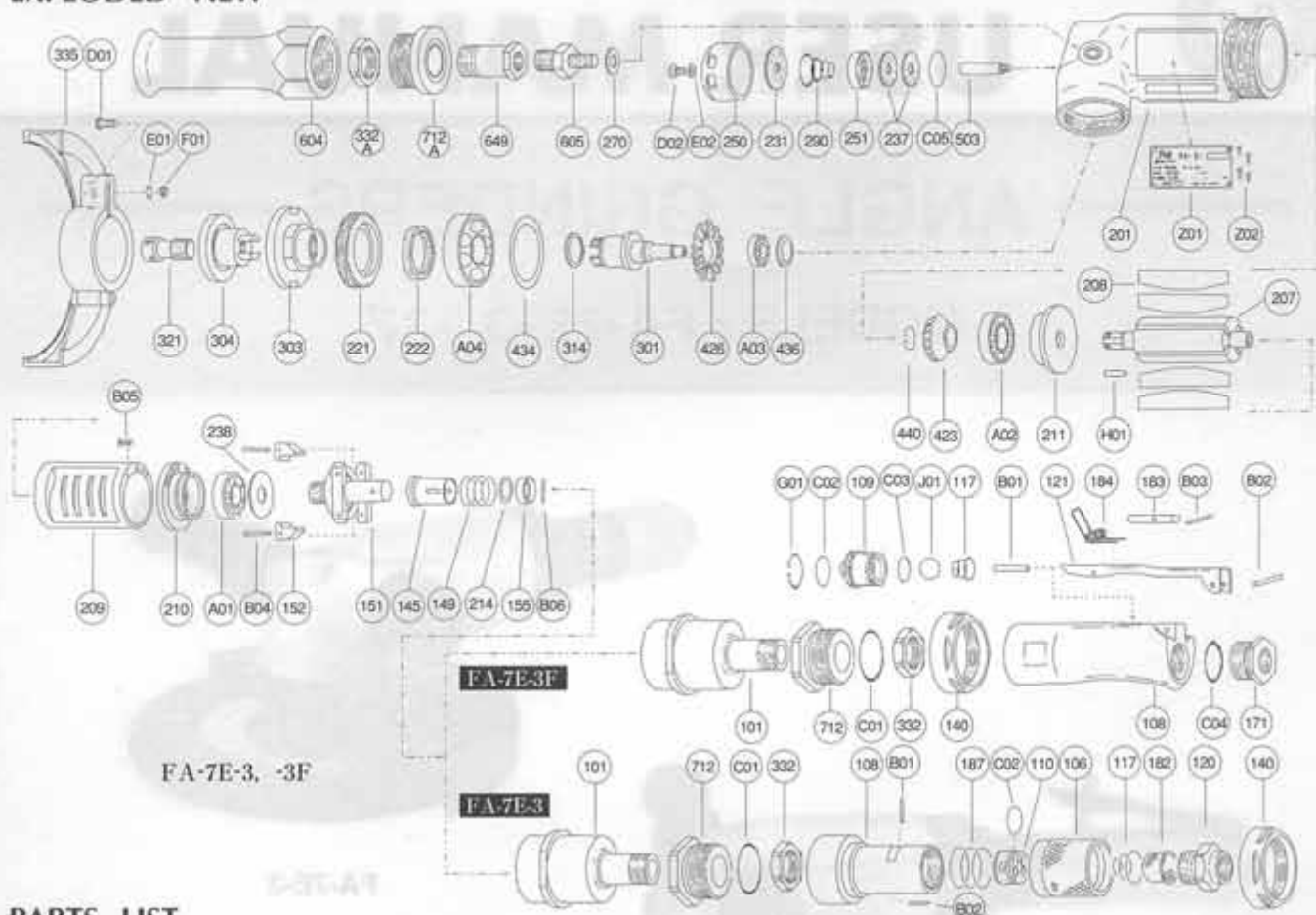
AIR MOTORS & OTHERS

OTHER PRODUCTS



PARTS LIST MODEL: FA-7E-3, -3F

EXPLODED VIEW



PARTS LIST

Index No.	Parts No.	Parts Name	Qt.	Index No.	Parts No.	Parts Name	Qt.	Index No.	Parts No.	Parts Name	Qt.
FA-7E-3				C04	O-P20	"O" Ring	1	237	A-193237-00	Muffer Pad	2
CP No.	A-193001-00	Housing Cover CP		G01	SR-R20	Snap Ring	1	238	A-109238-00	Bearing Cover (B)	1
101	A-193101-00	Housing Cover	1	101	B-9/16U	Urethan Ball	1	250	A-193250-01	Exhaust Cover	1
332	A-192332-00	Lock Nut	1	CP No.	A-192019-00	Lock Lever CP		251	A-193251-00	Exhaust Valve	1
712	A-192712-00	Damper	1	121	A-192121-00	Lock Lever	1	270	H-001270-00	Conical Spring Washer	1
C01	O-S29	"O" Ring	1	183	G-144183-02	Lock Key	1	290	A-192290-00	Muffer Spring	1
CP No.	A-193003-00	Throttle Valve CP		184	G-144184-00	Lock Spring	1	301	A-193301-00	Wheel Spindle	1
100	A-077106-03	Throttle Valve Handle	1	B03	SP-218	Spring Pin	1	303	A-193303-00	Wheel Flange (A)	1
168	A-193108-00	Throttle Valve Body	1	FA-7E-3				304	A-193304-01	Wheel Flange (B)	1
110	A-077110-00	Throttle Valve	1	FA-7E-3F				314	A-109314-00	Wheel Spindle Washer (T=0.5)	1
117	A-077117-00	Throttle Valve Spring	1	CP No.	A-193010-00	Governor Weight CP		314	A-109314-01	Wheel Spindle Washer (T=0.3)	1
120	A-077120-00	Throttle Valve Cover (PT)	1	151	A-193151-00	Governor Cage	1	314	A-109314-02	Wheel Spindle Washer (T=0.2)	1
120	A-077120-01	Throttle Valve Cover (NPT)	1	152	G-053152-00	Governor Weight	2	321	A-070321-00	Detent Bolt	1
182	W-057182-00	Strainer	1	B04	GP-2524GCH	Grooved Pin	2	335	A-077335-00	Wheel Guard	1
187	A-077187-01	Throttle Valve Handle Spring	1	CP No.	A-192014-00	Dead Handle CP		D01	HS-625	Hexagon Bolt	1
B01	NR-415	Needle Roller	1	604	A-192604-00	Dead Handle	1	E01	SW-6	Spring Washer	1
B02	NR-413	Needle Roller	1	CP No.	A-192039-00	Damper CP		F01	N-6	Nut	1
C02	O-S22	"O" Ring	1	332A	A-192332-00	Lock Nut	1	423	A-109423-00	Bevel Pinion	1
FA-7E-3F				649	A-192649-00	Joint	1	426	A-109426-00	Bevel Gear	1
CP No.	A-193001-01	Housing Cover CP		712A	A-192712-01	Damper	1	434	A-025434-00	Bearing Washer	1
101	A-193101-00	Housing Cover	1	140	A-077140-00	Cup Nut (For FA-7E-3)	1	436	D-008436-00	Bearing Holder	1
140	A-077140-00	Cup Nut	1	145	A-077145-00	Governor Valve	1	440	A-109440-00	Ring	1
332	A-192332-00	Lock Nut	1	149	A-077149-01	Governor Valve Spring	1	503	A-193503-00	Spacer (B)	1
712	A-192712-00	Damper	1	155	A-069155-00	Governor Valve Spring Holder	1	605	A-108605-00	Dead Handle Joint	1
C01	O-S29	"O" Ring	1	201	A-193201-00	Housing	1	A01	BB-6002MN	Ball Bearing	1
CP No.	A-192003-01	Throttle Valve Body CP		207	A-193207-00	Rotor	1	A02	BB-6301	Ball Bearing	1
108	A-192108-01	Throttle Valve Body	1	208	A-193208-00	Rotor Blade	4	A03	BB-608	Ball Bearing	1
109	A-192109-00	Throttle Valve Bushing	1	209	A-193209-00	Cylinder	1	A04	BB-6204ZZ	Ball Bearing	1
117	A-192117-00	Throttle Valve Spring	1	(B05)	SP-38	Spring Pin	1	B06	NR-2515.8	Needle Roller	1
171	A-192171-00	Inlet Joint (PT)	1	210	A-109210-00	Cylinder Upper Plate	1	C05	O-S32	"O" Ring	1
171	A-192171-01	Inlet Joint (NPT)	1	211	A-109211-00	Cylinder Lower Plate	1	D02	CS-58B	Cap Screw	1
B01	NR-423FR	Needle Roller	1	214	A-069214-00	Adjusting Washer (T=0.2)	1	E02	PW-5	Plain Washer	1
B02	SP-320	Spring Pin	1	214	A-069214-01	Adjusting Washer (T=0.3)	1	H01	K-4410F	Key	1
B02	SP-320	Spring Pin	1	214	A-069214-02	Adjusting Washer (T=0.5)	1	Z01	NP-0114	Name Plate	1
C02	O-S16	"O" Ring	1	221	A-193221-00	Spindle Bearing Washer	1	Z02	NPN-0x3.2	Screw Rivet	4
C03	O-S14	"O" Ring	1	222	A-193222-00	Felt Ring	1				
				231	A-193231-00	Silencer Plate	1				

□ CP No. denotes the assembled parts comprising of more than 1 pc. of parts.

□ Specify parts number and quantity in ordering.

The related parts are shown in the thick frame.

■ Standard Accessories : F-708 8mm Hex. Pin Wrench 1.

□ #209 and 335 are supplied together with parts shown in ().

F-110 26mm Open-End Wrench 1.