



USER MANUAL

ANGLE GRINDERS

MODELS : FA-7E-1, -1F



FA-7E-1F

FA-7E-1

SPECIFICATIONS

Model	Max. Dia.						Max Free Speed min ⁻¹	Spindle Thread Size in	Angle Head Height (about)		Overall Length (about)		Mass (about)		Air Consumption Under Load (about)	
	Grinding Wheel		Sanding Disc		Cup Wire Brush				mm	in	mm	in	kg	lb	Nm ³ /min	lit ³ /min
	mm	in	mm	in	mm	in										
FA-7E-1	180x6x22.2	7x1/4x7/8	180x-x22.2	7x-x7/8	100x-x15.8	4x-x5/8	7,000	W1/2-16(F)	87	327/64	294	1137/64	3.1	6.9	1.40	49.5
FA-7E-1F	180x6x22.2	7x1/4x7/8	180x-x22.2	7x-x7/8	100x-x15.8	4x-x5/8	7,000	W1/2-16(F)	87	327/64	329	1261/64	3.1	6.9	1.40	49.5

3/8" Air Inlet. 1/2" (12.7mm) Air Hose.

The performance figures are at 0.63MPa (6.3bar).

※ The models are supplied for use of Grinding Wheel. When the models are used with Sanding Disc or Wire Brush, the parts necessary to mount them on the models are necessary. Order separately.

⚠ Refer to "The Instructions and Warning for Safety Use" enclosed in each tool box.

FUJI AIR TOOLS CO., LTD.

2-1-14 Kamiji, Higashinari-ku, Osaka, 537-0003 Japan

Tel : (06) 6972-2335

Fax : (06) 6972-2250



BOLT & NUT SETTERS
SCREW DRIVERS

ABRASIVE TOOLS

DRILLS • TAPPERS

PERCUSSION TOOLS

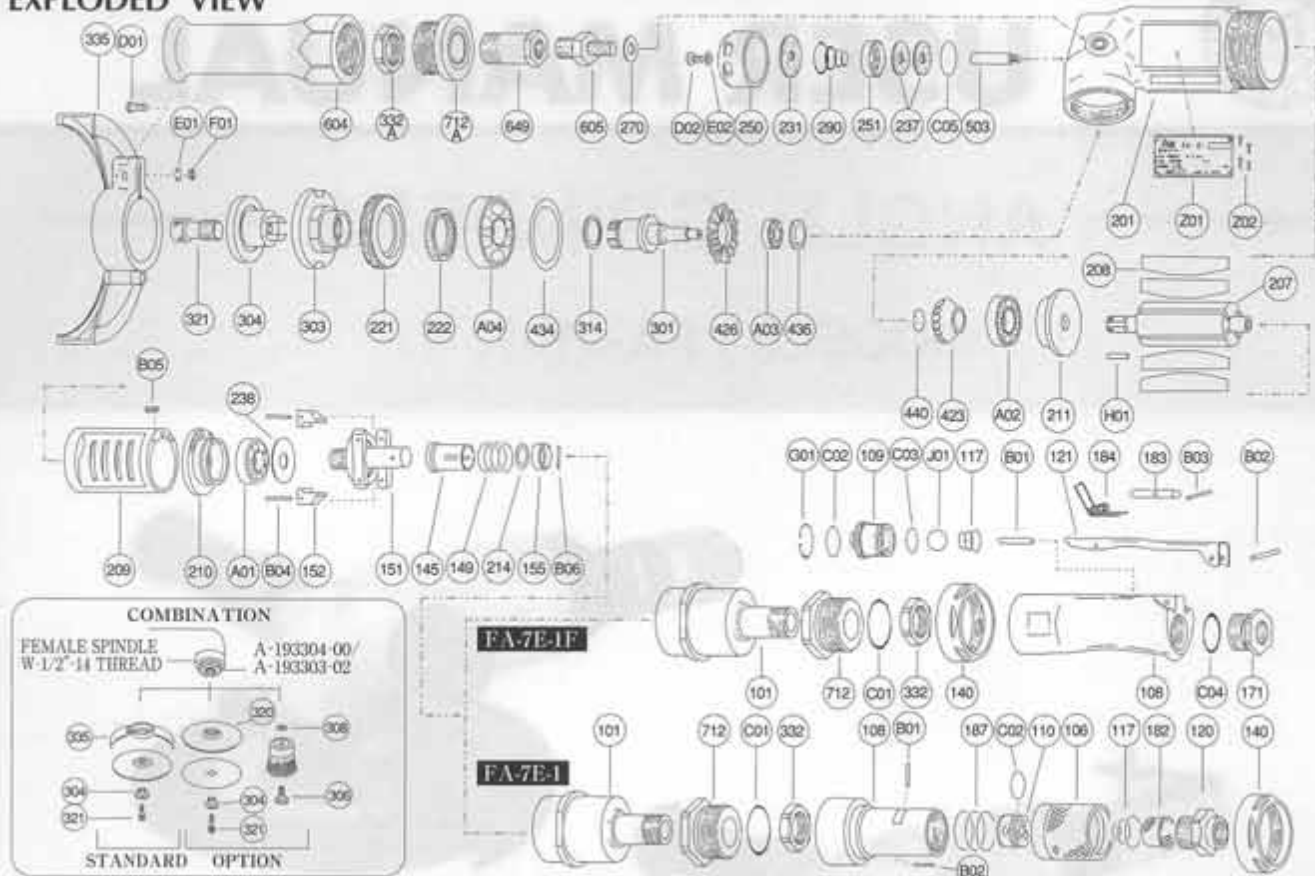
AIR MOTORS & OTHERS

OTHER PRODUCTS



PARTS LIST MODEL: FA-7E-1, -1F

EXPLODED VIEW



PARTS LIST

FA-7E-1, -1F

Index No.	Parts No.	Parts Name	Qt.	Index No.	Parts No.	Parts Name	Qt.	Index No.	Parts No.	Parts Name	Qt.
FA-7E-1				FA-7E-1				FA-7E-1			
CP No.	A-193001-00	Housing CP		CP No.	A-192019-00	Lock Lever CP		301	A-193301-00	Wheel Spindle	1
101	A-193101-00	Housing Cover	1	121	A-192121-00	Lock Lever	1	303	A-193303-00	Wheel Flange (A)	1
332	A-192332-00	Lock Nut	1	183	G-144183-02	Lock Key	1	304	A-193304-01	Wheel Flange (B)	1
712	A-192712-00	Damper	1	184	G-144184-00	Lock Spring	1	314	A-109314-00	Wheel Spindle Washer (T=0.5)	1
C01	O-S29	* O' Ring	1	B03	SP-218	Spring Pin	1	314	A-109314-01	Wheel Spindle Washer (T=0.3)	1
CP No.	A-193003-00	Throttle Valve Body CP		FA-7E-1F				FA-7E-1F			
106	A-077106-03	Throttle Valve Handle	1	CP No.	A-193010-00	Governor Weight CP		321	A-070321-00	Detent Bolt	1
108	A-193108-00	Throttle Valve Body	1	151	A-193151-00	Governor Cage	1	335	A-193335-00	Wheel Guard	1
110	A-077110-00	Throttle Valve	1	152	G-053152-00	Governor Weight	2	(D01)	HS-625	Hexagon Bolt	1
117	A-077117-00	Throttle Valve Spring	1	B04	GP-2524GCH	Grooved Pin	2	E01	SW-6	Spring Washer	1
120	A-077120-00	Throttle Valve Cover (PT)	1	CP No.	A-192014-00	Dead Handle CP		F01	N-6	Nut	1
120	A-077120-01	Throttle Valve Cover (NPT)	1	604	A-192604-00	Dead Handle	1	423	A-109423-00	Bevel Pinion	1
182	W-057182-00	Strainer	1	CP No.	A-192039-00	Damper CP		426	A-109426-00	Bevel Gear	1
187	A-077187-01	Throttle Valve Handle Spring	1	332A	A-192332-00	Lock Nut	1	434	A-025434-00	Bearing Washer	1
B01	NR-415	Needle Roller	1	649	A-192649-00	Joint	1	436	D-008436-00	Bearing Holder	1
B02	NR-413	Needle Roller	1	712A	A-192712-01	Damper	1	440	A-109440-00	Ring	1
C02	O-S22	* O' Ring	1	140	A-077140-00	Cup Nut (For FA-7E-1)	1	503	A-193503-00	Spacer (B)	1
FA-7E-1F				145	A-077145-00	Governor Valve	1	605	A-108605-00	Dead Handle Joint	1
CP No.	A-193001-01	Housing Cover CP		149	A-077149-03	Governor Valve Spring	1	A01	BB-6002MN	Ball Bearing	1
101	A-193101-00	Housing Cover	1	155	A-069155-00	Governor Valve Spring Holder	1	A02	BB-6301	Ball Bearing	1
140	A-077140-00	Cup Nut	1	201	A-193201-00	Housing	1	A03	BB-608	Ball Bearing	1
332	A-192332-00	Lock Nut	1	207	A-193207-00	Rotor	1	A04	BB-6204ZZ	Ball Bearing	1
712	A-192712-00	Damper	1	208	A-193208-00	Rotor Blade	4	B06	NR-2.515.8	Needle Roller	1
C01	O-S29	* O' Ring	1	209	A-193209-00	Cylinder	1	C05	O-S32	* O' Ring	1
CP No.	A-192003-01	Throttle Valve Body CP		(B05)	SP-38	Spring Pin	1	D02	CS-58B	Cap Screw	1
108	A-192108-01	Throttle Valve Body	1	210	A-109210-00	Cylinder Upper Plate	1	E02	PW-5	Plain Washer	1
109	A-192109-00	Throttle Valve Bushing	1	211	A-109211-00	Cylinder Lower Plate	1	H01	K-4410F	Key	1
117	A-192117-00	Throttle Valve Spring	1	214	A-069214-00	Adjusting Washer (T=0.2)	1	201	NP-0107	Name Plate	1
171	A-192171-00	Inlet Joint (PT)	1	214	A-069214-01	Adjusting Washer (T=0.3)	1	202	NPN-0x3.2	Screw Rivet	4
171	A-192171-01	Inlet Joint (NPT)	1	214	A-069214-02	Adjusting Washer (T=0.5)	1	OPTION			
B01	NR-423FR	Needle Roller	1	221	A-193221-00	Spindle Bearing Washer	1	Sanding Disc			
B02	SP-320	Spring Pin	1	222	A-193222-00	Felt Ring	1	304	A-193304-01	Wheel Flange (B)	1
C02	O-S16	* O' Ring	1	231	A-193231-00	Silencer Plate	1	320	RP-7	Rubber Backing Pad	1
C03	O-S14	* O' Ring	1	237	A-193237-00	Muffler Pad	2	321	A-070321-00	Detent Bolt	1
C04	O-P20	* O' Ring	1	238	A-109238-00	Bearing Cover (B)	1	Wire Brush			
G01	SR-R20	Snap Ring	1	250	A-193250-01	Exhaust Cover	1	306	A-103306-00	Wire Brush Holder Flange	1
J01	B-9/16U	Urethan Ball	1	251	A-193251-00	Exhaust Valve	1	308	A-009308-00	Spacer	1
				270	H-001270-00	Conical Spring Washer	1	OPTION			
				290	A-192290-00	Muffler Spring	1	Sanding Disc			

CP No. denotes the assembled parts comprising of more than 1 pc. of parts. Specify parts number and quantity in ordering.
 The related parts are shown in the thick frame. ■ Standard Accessories : F-708 8mm Hex. Pin Wrench 1.
 #209 and 335 are supplied together with parts shown in (). F-110 26mm Open-End Wrench 1.