



# USER MANUAL

## ABRASIVE TOOLS

MODELS : FA-6C-9M



FA-6C-9M

### SPECIFICATIONS

Model	Capacity						Rotational Frequency	Angle Head Height		Overall Length		Mass		Max. Air Consumption		Air Inlet Thread Size	Air Hose Size		
	Wheel Size		Sanding Disc		Cup Wire Brush			mm	in	mm	in	kg	lb	m <sup>3</sup> /min	ft <sup>3</sup> /min		in	mm	in
	mm	in	mm	in	mm	in													
FA-6C-9M	180x6x22.2	7x1/4x7/8	180x-x22.2	7x-x7/8	180x-x15.8	4x-x5/8	7,000	89	3 1/2	353	13 5/16	3.0	6.6	1.1	38.8	PT or NPT 3/8	12.7	1/2	

\*The models are supplied for use of Grinding Wheel. When the models are used with Sanding Disc or Wire Brush, order separately the parts necessary to mount them on the models.

The performance figures are at 0.63MPa (6.3bar).



Refer to "The Instructions and Warning for Safety Use" enclosed in each tool box.

FUJI AIR TOOLS CO., LTD.

2-1-14 Kamiji, Higashinari-ku, Osaka, 537-0003 Japan

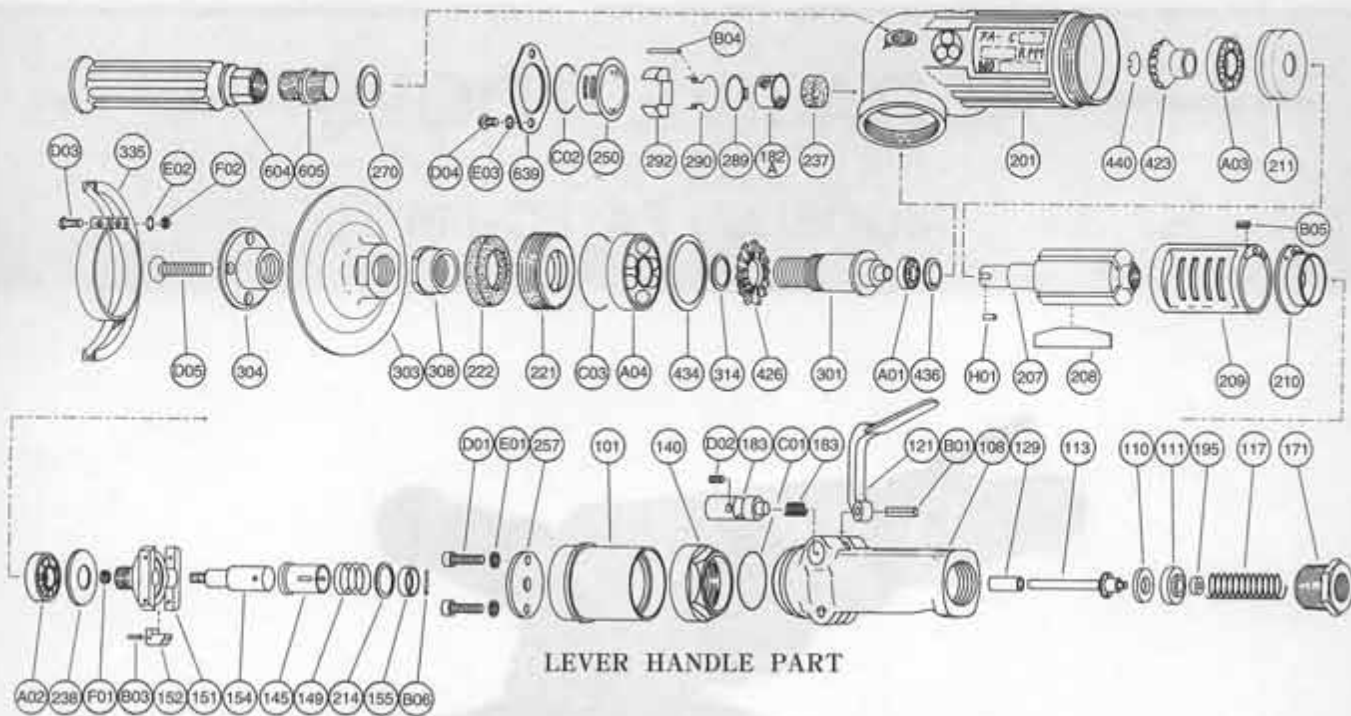
Tel : 81-6-6972-2335

Fax : 81-6-6972-2250



# PARTS LIST MODEL: FA-6C-9M

## EXPLODED VIEW



LEVER HANDLE PART

FA-6C-9M

## PARTS LIST

Index No.	Parts No.	Parts Name	Qt.	Index No.	Parts No.	Parts Name	Qt.	Index No.	Parts No.	Parts Name	Qt.
Assy No.	A-108001-00	Housing Cover Assy		B03	GP-2516GCH	Grooved Pin	2	301	A-109301-00	Wheel Spindle	1
101	A-108101-00	Housing Cover	1	F01	N-3	Nut	2	303	A-041303-A	Wheel Flange (A)	1
140	G-087140-00	Cup Nut	1	Assy No.	A-109012-00	Exhaust Cover Assy		304	A-100304-02	Wheel Flange (B)	1
257	A-108257-00	Washer	1	182A	W-014182-00	Strainer	1	308	A-096308-00	Spacer	1
C01	O-S34	"O" Ring	1	237	A-078237-00	Muffler Pad	1	314	A-109314-00	Wheel Spindle Washer (T=0.5)	1
D01	CS-518	Cap Screw	2	250	A-109250-00	Exhaust Cover	1		A-109314-01	Wheel Spindle Washer (T=0.3)	1
E01	SW-5	Spring Washer	2	289	A-093289-00	Muffler Plate	1		A-109314-02	Wheel Spindle Washer (T=0.2)	1
Assy No.	A-096003-00	Throttle Valve Body Assy (PT)		290	A-109290-00	Muffler Spring	1	335	A-041335-01	Wheel Guard	1
Assy No.	A-096003-03	Throttle Valve Body Assy (NPT)		292	A-109292-00	Muffler Plate Holder	1	(D03)	HS-625	Hexagon Bolt	1
108	A-096108-00	Throttle Valve Body	1	B04	SP-325	Spring Pin	1	(E02)	SW-6	Spring Washer	1
(129)	A-078129-00	Throttle Valve Rod Bushing	1	C02	O-S46	"O" Ring	1	F02	N-6	Nut	1
117	A-078117-01	Throttle Valve Spring	1	145	A-065145-00	Governor Valve	1	423	A-109423-00	Bevel Pinion	1
121	A-078121-00	Throttle Valve Lever	1	149	A-086149-00	Governor Valve Spring	1	426	A-109426-00	Bevel Gear	1
171	IB-6N30S0	Inlet Bushing (PT)	1	155	A-065155-00	Governor Valve Spring Holder	1	434	A-025434-00	Bearing Washer	1
	IB-6N3NS0	Inlet Bushing (NPT)	1	201	A-108201-00	Housing	1	436	D-008436-00	Bearing Holder	1
183	A-078183-01	Lock Key	1	207	A-108207-00	Rotor	1	440	A-109440-00	Ring	1
184	A-078184-00	Lock Spring	1	208	A-108208-00	Rotor Blade	4	604	A-025604-02	Dead Handle	1
B01	GP-520GCH	Grooved Pin	1	209	A-108209-00	Cylinder	1	605	A-025605-00	Dead Handle Joint	1
D02	SS-48	Set Screw	1	(B05)	SP-38	Spring Pin	1	639	A-109639-00	Exhaust Cover Holder	1
Assy No.	A-078008-00	Throttle Valve Rod Assy		210	A-108210-00	Cylinder Upper Plate	1	A01	BB-608	Ball Bearing	1
110	A-078110-01	Throttle Valve	1	211	A-108211-00	Cylinder Lower Plate	1	A02	BB-6001	Ball Bearing	1
111	A-078111-01	Throttle Valve Washer	1	214	A-065214-00	Adjusting Washer (T=0.2)	1	A03	BB-6301	Ball Bearing	1
113	A-178113-01	Throttle Valve Rod	1		A-065214-01	Adjusting Washer (T=0.3)	1	A04	BB-6204	Ball Bearing	1
195	W-080195-00	Sub Throttle Valve Valve	1		A-065214-02	Adjusting Washer (T=0.5)	1	B06	NR-211.8	Needle Roller	1
Assy No.	A-065010-03	Governor Weight Assy		221	A-096221-00	Spindle Bearing Cover	1	C03	O-S44	"O" Ring	1
151	A-065151-00	Governor Cage	1	(222)	A-025222-00	Felt Ring	1	D04	CS-510B	Cap Screw	2
152	A-010152-00	Governor Weight	2	238	A-108238-00	Bearing Cover (B)	1	D05	CS-635S	Cap Screw	2
154	A-108154-00	Governor Shaft	1	270	H-001270-00	Conical Spring Washer	1	E03	SW-5	Spring Washer	2
								H01	K-4410F	Key	1

□ Assy No. denotes the assembled parts comprising of more than 1 pc. of parts. The related parts are shown in the thick frame.

□ #108, 209, 221 and 335 are supplied together with parts shown in ( ).

□ Specify parts number and quantity in ordering.

■ Standard Accessories : F-704 ..... 4mm Hex. Pin Wrench 1.

F-109 ..... Open-End Wrench 1.

F-203 ..... Open-End Pin Wrench 1.

● Optional Accessories : HN-3N4000 ..... Hose Nipple 1.