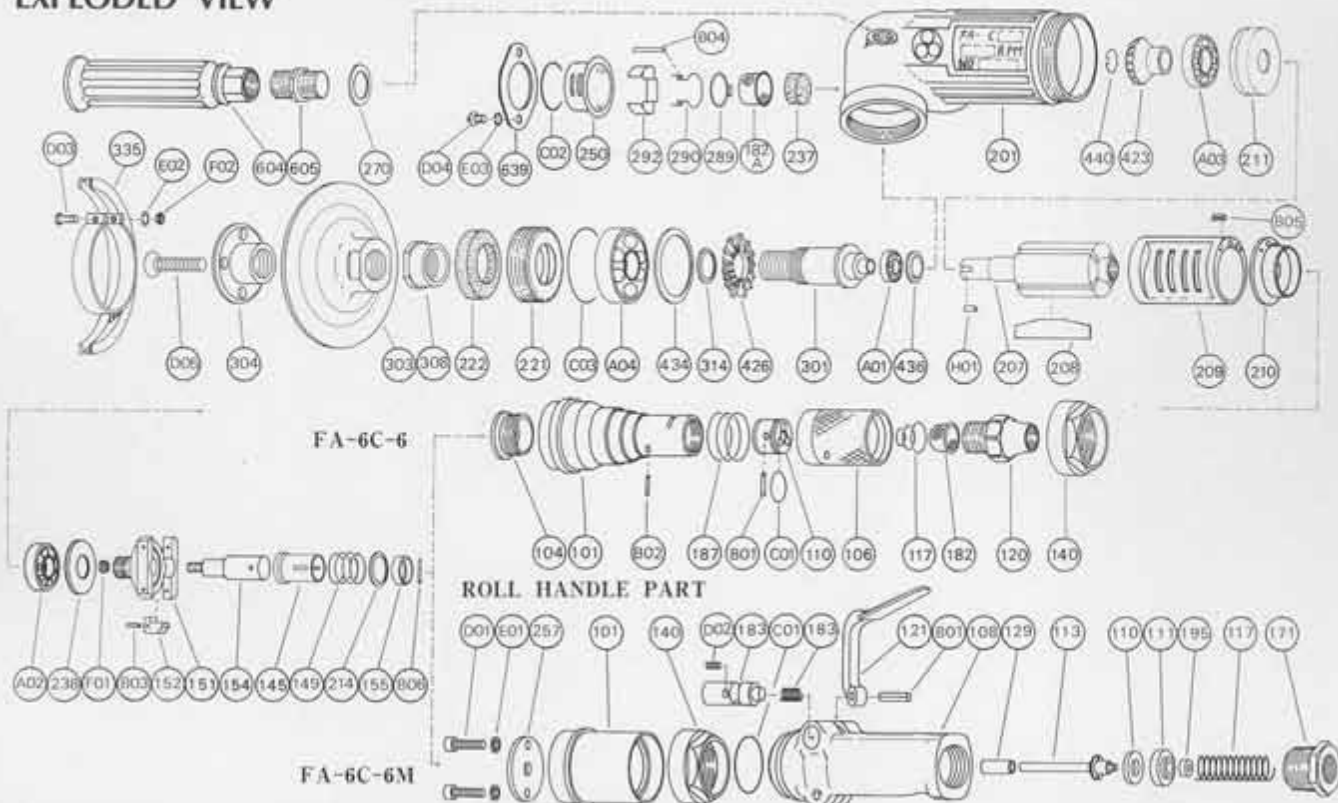




PARTS LIST MODEL: FA-6C-6 & -6M

EXPLODED VIEW



PARTS LIST

Index No.	Parts No.	Parts Name	Qt.	Index No.	Parts No.	Parts Name	Qt.	Index No.	Parts No.	Parts Name	Qt.
FA-6C-6											
ROLL HANDLE PART											
CP No.	A-086001-00	Housing Cover CP		CP No.	A-078008-00	Throttle Valve Rod CP		214	A-065214-02	Adjusting Washer (T=0.5)	1
101	A-086101-00	Housing Cover	1	110	A-078110-01	Throttle Valve	1	221	A-096221-00	Spindle Bearing Cover	1
104	A-065104-02	Bushing	1	111	A-078111-01	Throttle Valve Washer	1	222	A-025222-00	Felt Ring	1
106	A-086106-00	Throttle Valve Handle	1	113	A-078113-01	Throttle Valve Rod	1	238	A-108238-00	Bearing Cover (B)	1
110	A-086110-00	Throttle Valve	1	195	W-080195-00	Sub Throttle Valve	1	270	H-001270-00	Conical Spring Washer	1
117	A-086117-00	Throttle Valve Spring	1	FA-6C-6				301	A-109301-00	Wheel Spindle	1
120	A-086120-00	Throttle Valve Cover (PT)	1	FA-6C-6M				303	A-041303-A	Wheel Flange (A)	1
120	A-086120-01	Throttle Valve Cover (NPT)	1	CP No.	A-065010-03	Governor Weight CP		304	A-100304-02	Wheel Flange (B)	1
182	A-086182-00	Strainer	1	151	A-065151-00	Governor Cage	1	308	A-096308-00	Spacer	1
187	A-086187-00	Throttle Valve Handle Spring	1	152	A-010152-00	Governor Weight	2	314	A-109314-00	Wheel Spindle Washer (T=0.5)	1
B01	NR-415	Needle Roller	1	154	A-108154-00	Governor Shaft	1	314	A-109314-01	Wheel Spindle Washer (T=0.3)	1
B02	NR-413	Needle Roller	1	B03	GP-2.516GCH	Grooved Pin	2	314	A-109314-02	Wheel Spindle Washer (T=0.2)	1
C01	O-S20	"O" Ring	1	F01	N-3	Nut	2	335	A-041335-01	Wheel Guard	1
FA-6C-6M											
LEVER HANDLE PART											
CP No.	A-108001-00	Housing Cover CP		CP No.	A-109012-01	Exhaust Cover CP		D03	HS-625	Hexagon Bolt	1
101	A-108101-00	Housing Cover	1	182A	W-014182-00	Strainer	1	E02	SW-6	Spring Washer	1
140	G-087140-00	Cup Nut	1	237	A-078237-00	Muffler Pad	1	F02	N-6	Nut	1
257	A-108257-00	Washer	1	250	A-109250-00	Exhaust Cover	1	423	A-109423-00	Bevel Pinion	1
C01	O-S34	"O" Ring	1	289	A-093289-00	Muffler Plate	1	426	A-109426-00	Bevel Gear	1
D01	CS-518	Cap Screw	2	290	A-109290-01	Muffler Spring	1	434	A-025434-00	Bearing Washer	1
E01	SW-5	Spring Washer	2	292	A-109292-00	Muffler Plate Holder	1	436	D-008436-00	Bearing Holder	1
CP No.	A-096003-00	Throttle Valve Body CP		B04	SP-325	Spring Pin	1	440	A-109440-00	Ring	1
108	A-096003-50	Throttle Valve Body	1	C02	O-S46	"O" Ring	1	604	A-025604-02	Dead Handle	1
(129)	A-078129-00	Throttle Valve Rod Bushing	1	140	G-087140-00	Cup Nut (FA-6C-6)	1	605	A-025605-00	Dead Handle Joint	1
117	A-078117-01	Throttle Valve Spring	1	145	A-065145-00	Governor Valve	1	639	A-109639-00	Exhaust Cover Holder	1
121	A-078121-00	Throttle Valve Lever	1	149	G-171149-00	Governor Valve Spring	1	A01	BB-608	Ball Bearing	1
171	IB-6N30S0	Inlet Bushing (PT)	1	155	A-065155-00	Governor Valve Spring Holder	1	A02	BB-6001	Ball Bearing	1
171	IB-6N3NS0	Inlet Bushing (NPT)	1	201	A-108201-00	Housing	1	A03	BB-6301	Ball Bearing	1
183	A-078183-01	Lock Key	1	207	A-108207-00	Rotor	1	A04	BB-6204	Ball Bearing	1
184	A-078184-00	Lock Spring	1	208	A-108208-00	Rotor Blade	4	B06	NR-211.8	Needle Roller	1
B01	GP-520GCH	Grooved Pin	1	209	A-108209-00	Cylinder	1	C03	O-S44	"O" Ring	1
D02	SS-48	Set Screw	1	(B05)	SP-38	Spring Pin	1	D04	CS-510B	Cap Screw	2
				210	A-108210-00	Cylinder Upper Plate	1	D05	CS-635S	Cap Screw	1
				211	A-108211-00	Cylinder Lower Plate	1	E03	SW-5	Spring Washer	2
				214	A-065214-00	Adjusting Washer (T=0.2)	1	H01	K-4410F	Key	1
				214	A-065214-01	Adjusting Washer (T=0.3)	1				

□ CP No. denotes the assembled parts comprising of more than 1 pc. of parts.

The related parts are shown in the thick frame.

□ # 108, 209 and 335 are supplied together with parts shown in ().

□ Specify parts number and quantity in ordering.

■ Standard Accessories : F-704 4mm Hex. Pin Wrench 1.

F-109 Open-End Wrench 1.

F-203 Open-End Pin Wrench 1.

● Optional Accessory : HN-304000 Hose Nipple 1.



MANUFACTURER:
FUJI AIR TOOLS CO., LTD.

1-14, Kamiji 2-chome, Higashinari-ku, Osaka 537, Japan
Tel. : (06) 972-2335 (Overseas Dept) Fax : (06) 972-2250