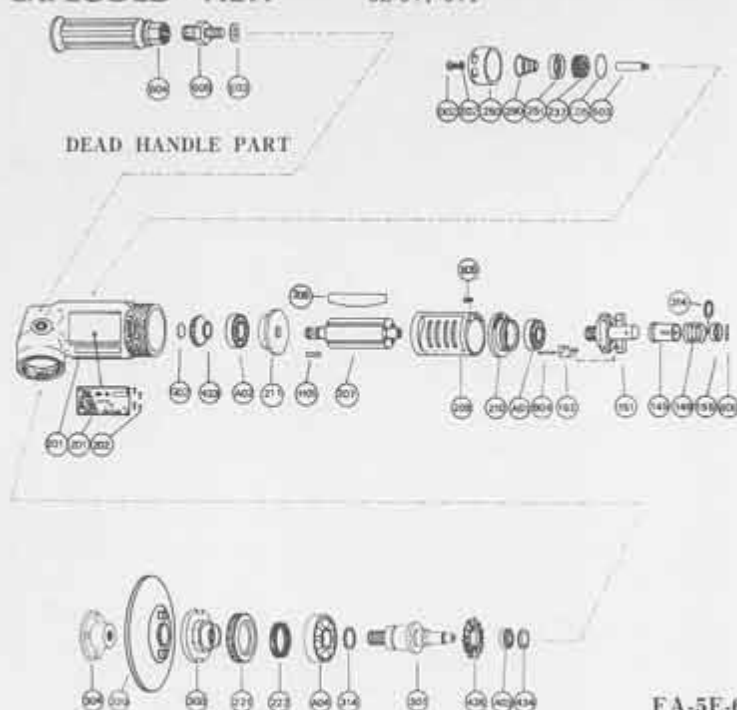
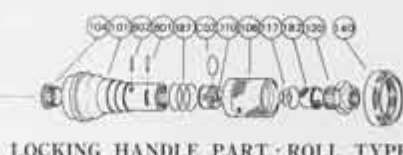


## EXPLODED VIEW

5E-6V, -6VF

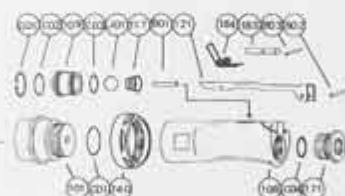


5E-6V



LOCKING HANDLE PART : ROLL TYPE

5E-6VF



LOCKING HANDLE PART : LEVER TYPE

## PARTS LIST

FA-5E-6V, -6VF

Index No.	Parts No.	Parts Name	Qt.	Index No.	Parts No.	Parts Name	Qt.	Index No.	Parts No.	Parts Name	Qt.
<b>FA-5E-6V LOCKING HANDLE ROLL TYPE</b>				C04	O-P20	"O" Ring	1	237	A-192237-00	Muffler Pad	2
<b>FA-5E-6VF LOCKING HANDLE LEVER TYPE</b>				G01	SR-R20	Snap Ring	1	250	A-192250-01	Exhaust Cover	1
CP No.	A-154001-00	Housing Cover CP		J01	B-14	Steel Ball	1	251	A-192251-00	Exhaust Valve	1
101	A-154101-00	Housing Cover	1	CP No.	A-192019-00	Locking Lever CP		290	A-192290-00	Muffler Spring	1
104	A-065104-02	Bushing	1	121	A-192121-00	Throttle Valve Lever	1	301	A-192301-01	Wheel Spindle	1
106	A-086106-00	Throttle Valve Handle	1	183	G-144183-02	Lock Key	1	303	A-192303-00	Wheel Flange (A)	1
110	A-086110-00	Throttle Valve	1	184	G-144184-00	Lock Spring	1	304	A-192304-02	Wheel Flange (B)	1
117	A-086117-00	Throttle Valve Spring	1	B03	SP-218	Spring Pin	1	314	A-006314-00	Wheel Spindle Washer (T=0.2)	1
120	A-086120-00	Throttle Valve Cover (PT)	1	<b>FA-5E-6V FA-5E-6VF</b>				314	A-006314-01	Wheel Spindle Washer (T=0.3)	1
120	A-086120-01	Throttle Valve Cover (NPT)	1	CP No.	A-107010-01	Governor Weight CP		314	A-006314-02	Wheel Spindle Washer (T=0.5)	1
182	A-086182-00	Strainer	1	151	A-107151-01	Governor Cage	1	320	RP-7	Rubber Backing Pad	1
187	A-086187-00	Throttle Valve Handle Spring	1	152	G-087152-00	Governor Weight	2	423	A-192423-00	Bevel Pinion	1
B01	NR-415	Needle Roller	1	B04	GP-2.516GCH	Grooved Pin	2	426	A-192426-00	Bevel Gear	1
B02	NR-413	Needle Roller	1	140	A-154140-00	Cup Nut	1	434	A-099434-00	Bearing Washer	1
C02	O-S20	"O" Ring	1	145	A-065145-00	Governor Valve	1	503	A-192503-00	Spacer (B)	1
<b>FA-5E-6VF LOCKING HANDLE LEVER TYPE</b>				149	A-065149-01	Governor Valve Spring	1	604	A-025604-02	Dead Handle	1
CP No.	A-192001-02	Housing Cover CP		155	A-065155-00	Governor Valve Spring Holder	1	605	A-107605-00	Dead Handle Joint	1
101	A-192101-01	Housing Cover	1	201	A-192201-00	Housing	1	A01	BB-609MN	Ball Bearing	1
140	A-154140-00	Cup Nut	1	207	A-192207-00	Rotor	1	A02	BB-6000MN	Ball Bearing	1
C01	O-S29	"O" Ring	1	208	A-152208-00	Rotor Blade	4	A03	BB-606	Ball Bearing	1
CP No.	A-192003-01	Throttle Valve Body CP		209	A-152209-00	Cylinder	1	A04	BB-6003Z2	Ball Bearing	1
108	A-192108-01	Throttle Valve Body	1	(B05)	SP-2.56	Spring Pin	1	B06	NR-211.8	Needle Roller	1
109	A-192109-00	Throttle Valve Bushing	1	210	A-192210-00	Cylinder Upper Plate	1	C05	O-S30	"O" Ring	1
117	A-192117-00	Throttle Valve Spring	1	211	A-152211-01	Cylinder Lower Plate	1	D01	CS-58B	Cap Screw	1
171	A-192171-00	Inlet Joint (PT)	1	214	A-065214-00	Adjusting Washer (T=0.2)	1	E01	PW-5	Plain Washer	1
171	A-192171-01	Inlet Joint (NPT)	1	214	A-065214-01	Adjusting Washer (T=0.3)	1	E02	PW-8	Plain Washer	1
B01	NR-423FR	Needle Roller	1	214	A-065214-02	Adjusting Washer (T=0.5)	1	G02	SR-SA9	Snap Ring	1
B02	SP-320	Spring Pin	1	221	A-192221-00	Spindle Bearing Cover	1	H01	K-338F	Key	1
C02	O-S16	"O" Ring	1	222	A-006222-00	Felt Ring	1	Z01	NP-0115	Name Plate	1
C03	O-S14	"O" Ring	1					Z02	NPN-0X3.2	Screw Rivet	4

CP No. denotes the assembled parts comprising of more than 1 pc. of parts.

The related parts are shown in the thick frame.

#209 is supplied together with parts shown in ( ).

Specify parts number and quantity in ordering.

■ Standard Accessories: 1 pc. Open-End Wrench.

1 pc. Hex. Pin Wrench.

MANUFACTURER:  
**FUJI AIR TOOLS CO., LTD.**

1-14, Kamiji 2-chome, Higashinari-ku, Osaka 537, Japan  
Tel. : (06) 972-2335 (Overseas Dept) Fax : (06) 972-2250