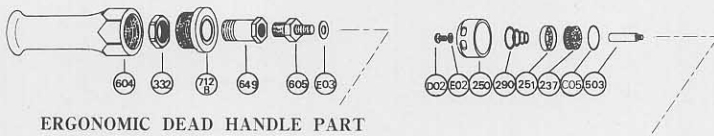


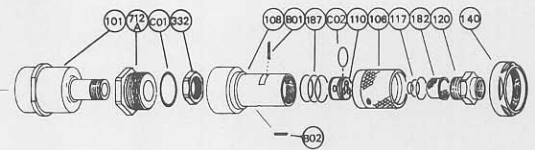
EXPLODED VIEW

5E-6, -6F



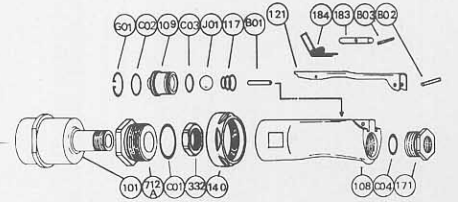
ERGONOMIC DEAD HANDLE PART

5E-6

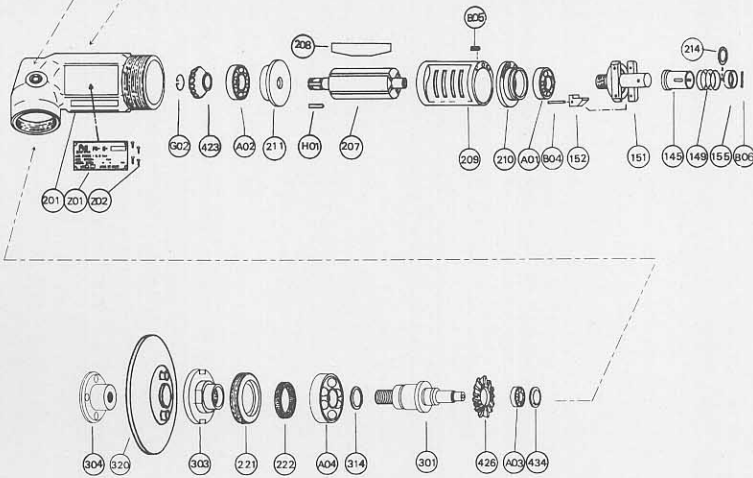


ERGONOMIC LOCKING HANDLE PART : ROLL TYPE

5E-6F



ERGONOMIC LOCKING HANDLE PART : LEVER TYPE



FA-5E-6, -6F

PARTS LIST

Index No.	Parts No.	Parts Name	Qt.
FA-5E-6 (ERGONOMIC) LOCKING HANDLE ROLL TYPE			
CP No.	A-192001-00	Housing Cover CP	
101	A-192101-00	Housing Cover	1
332	A-192332-00	Lock Nut	1
712A	A-192712-00	Damper	1
C01	O-S29	"O" Ring	1
CP No.	A-192003-00	Throttle Valve Body CP	
106	A-086106-00	Throttle Valve Handle	1
108	A-192108-00	Throttle Valve Body	1
110	A-086110-00	Throttle Valve	1
117	A-086117-00	Throttle Valve Spring	1
120	A-086120-00	Throttle Valve Cover (PT)	1
120	A-086120-01	Throttle Valve Cover (NPT)	1
182	A-086182-00	Strainer	1
187	A-086187-00	Throttle Valve Handle Spring	1
B01	NR-415	Needle Roller	1
B02	NR-413	Needle Roller	1
C02	O-S20	"O" Ring	1
FA-5E-6F (ERGONOMIC) LOCKING HANDLE LEVER TYPE			
CP No.	A-192001-01	Housing Cover CP	
101	A-192101-00	Housing Cover	1
140	A-154140-00	Cup Nut	1
332	A-192332-00	Lock Nut	1
712A	A-192712-00	Damper	1
C01	O-S29	"O" Ring	1
CP No.	A-192003-01	Throttle Valve Body CP	
108	A-192108-01	Throttle Valve Body	1
109	A-192109-00	Throttle Valve Bushing	1
117	A-192117-00	Throttle Valve Spring	1
171	A-192171-00	Inlet Joint (PT)	1
171	A-192171-01	Inlet Joint (NPT)	1
B01	NR-423FR	Needle Roller	1

Index No.	Parts No.	Parts Name	Qt.
B02	SP-320	Spring Pin	1
C02	O-S16	"O" Ring	1
C03	O-S14	"O" Ring	1
C04	O-P20	"O" Ring	1
G01	SR-R20	Snap Ring	1
J01	B-14	Steel Ball	1
CP No.	A-192019-00	Locking Lever CP	
121	A-192121-00	Throttle Valve Lever	1
183	G-144183-02	Lock Key	1
184	G-144184-00	Lock Spring	1
B03	SP-218	Spring Pin	1
FA-5E-6F			
CP No.	A-107010-01	Governor Weight CP	
151	A-107151-01	Governor Cage	1
152	G-087152-00	Governor Weight	2
B04	GP-2.516GCH	Grooved Pin	2
CP No.	A-192014-00	Dead Handle CP	
604	A-192604-00	Dead Handle	1
CP No.	A-192039-00	Damper CP	
332	A-192332-50	Lock Nut	1
649	A-192649-00	Joint	1
712B	A-192712-01	Damper	1
140	A-154140-00	Cup Nut	1
145	A-065145-00	Governor Valve	1
149	A-065149-01	Governor Valve Spring	1
155	A-065155-00	Governor Valve Spring Holder	1
201	A-192201-00	Housing	1
207	A-192207-00	Rotor	1
208	A-152208-00	Rotor Blade	4
209	A-152209-00	Cylinder	1
(B05)	SP-2.56	Spring Pin	1
210	A-192210-00	Cylinder Upper Plate	1
211	A-152211-01	Cylinder Lower Plate	1

Index No.	Parts No.	Parts Name	Qt.
214	A-065214-00	Adjusting Washer (T=0.2)	1
214	A-065214-01	Adjusting Washer (T=0.3)	1
214	A-065214-02	Adjusting Washer (T=0.5)	1
221	A-192221-00	Spindle Bearing Cover	1
222	A-006222-00	Felt Ring	1
237	A-192237-00	Muffler Pad	2
250	A-192250-01	Exhaust Cover	1
251	A-192251-00	Exhaust Valve	1
290	A-192290-00	Muffler Spring	1
301	A-192301-01	Wheel Spindle	1
303	A-192303-00	Wheel Flange (A)	1
304	A-192304-02	Wheel Flange (B)	1
314	A-006314-00	Wheel Spindle Washer (T=0.2)	1
314	A-006314-01	Wheel Spindle Washer (T=0.3)	1
314	A-006314-02	Wheel Spindle Washer (T=0.5)	1
320	RP-7	Rubber Backing Pad	1
423	A-192423-00	Bevel Pinion	1
426	A-192426-00	Bevel Gear	1
434	A-099434-00	Bearing Washer	1
503	A-192503-00	Spacer (B)	1
605	A-107605-00	Dead Handle Joint	1
A01	BB-609MN	Ball Bearing	1
A02	BB-6000MN	Ball Bearing	1
A03	BB-606	Ball Bearing	1
A04	BB-6003ZZ	Ball Bearing	1
B06	NR-211.8	Needle Roller	1
C05	O-S30	"O" Ring	1
D02	CS-58B	Cap Screw	1
E01	PW-5	Plain Washer	1
E02	PW-8	Plain Washer	1
G02	SR-SA9	Snap Ring	1
H01	K-338F	Key	1
Z01	NP-0115	Name Plate	1
Z02	NPN-0X3.2	Screw Rivet	4

- CP No. denotes the assembled parts comprising of more than 1 pc. of parts. The related parts are shown in the thick frame.
- #209 is supplied together with parts shown in ().
- Specify parts number and quantity in ordering.

- Standard Accessories: 1 pc. Open-End Wrench.
1 pc. Hex. Pin Wrench.

MANUFACTURER:
FUJI AIR TOOLS CO., LTD.

1-14, Kamiji 2-chome, Higashinari-ku, Osaka 537, Japan
Tel. : (06) 972-2335 (Overseas Dept) Fax : (06) 972-2250