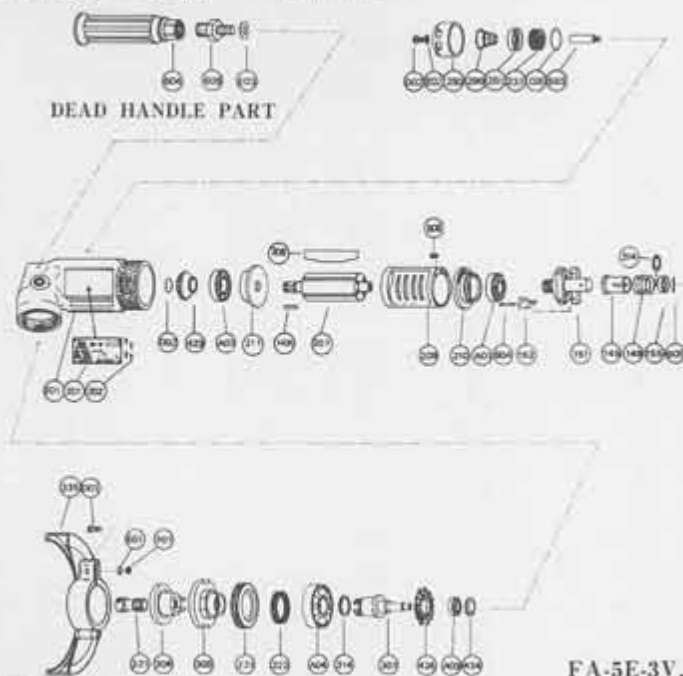


EXPLODED VIEW

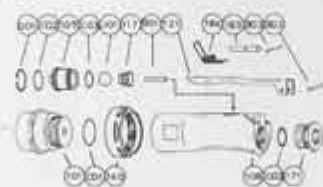
5E-3V, -3VF

5E-3V



LOCKING HANDLE PART: ROLL TYPE

5E-3VF



LOCKING HANDLE PART: LEVER TYPE

FA-5E-3V, -3VF

PARTS LIST

Index No.	Parts No.	Parts Name	Qt.	Index No.	Parts No.	Parts Name	Qt.	Index No.	Parts No.	Parts Name	Qt.
FA-5E-3V				FA-5E-3V				FA-5E-3V			
LOCKING HANDLE ROLL TYPE				LOCKING HANDLE ROLL TYPE				LOCKING HANDLE ROLL TYPE			
CP No.	A-154001-00	Housing Cover CP		G01	SR-R20	Snap Ring	1	290	A-192290-00	Muffler Spring	1
101	A-154101-00	Housing Cover	1	J01	B-14	Steel Ball	1	301	A-192301-00	Wheel Spindle	1
104	A-065104-02	Bushing	1	CP No. A-192019-00 Locking Lever CP				303	A-192303-02	Wheel Flange (A)	1
106	A-086106-00	Throttle Valve Handle	1	121	A-192121-00	Throttle Valve Lever	1	304	A-192304-03	Wheel Flange (B) (3V:15MM)	1
110	A-086110-00	Throttle Valve	1	183	G-144183-02	Lock Key	1	304	A-192304-04	Wheel Flange (B) (3VF:15.8MM)	1
117	A-086117-00	Throttle Valve Spring	1	184	G-144184-00	Lock Spring	1	314	A-006314-00	Wheel Spindle Washer (T=02)	1
120	A-086120-00	Throttle Valve Cover (PT)	1	B03	SP-218	Spring Pin	1	314	A-006314-01	Wheel Spindle Washer (T=03)	1
120	A-086120-01	Throttle Valve Cover (NPT)	1	FA-5E-3V				314	A-006314-02	Wheel Spindle Washer (T=05)	1
182	A-086182-00	Strainer	1	FA-5E-3VF				321	A-066321-00	Detent Bolt	1
187	A-086187-00	Throttle Valve Handle Spring	1	CP No.	A-107010-00	Governor Weight CP		335	A-192335-01	Wheel Guard	1
B01	NR-115	Needle Roller	1	151	A-107151-01	Governor Cage	1	(D01)	HS-625	Hexagon Bolt	1
B02	NR-113	Needle Roller	1	152	A-010152-00	Governor Weight	2	(E01)	SW-6	Spring Washer	1
C02	O-S20	"O" Ring	1	B04	GP-2.516GCH	Grooved Pin	2	(F01)	N-6	Nut	1
FA-5E-3VF				140	A-154140-00	Cup Nut	1	423	A-192423-00	Bevel Pinion	1
LOCKING HANDLE LEVER TYPE				145	A-065145-00	Governor Valve	1	426	A-192426-00	Bevel Gear	1
CP No.	A-192001-02	Housing Cover CP		149	G-087149-02	Governor Valve Spring	1	434	A-099434-00	Bearing Washer	1
101	A-192101-01	Housing Cover	1	155	A-065155-00	Governor Valve Spring Holder	1	503	A-192503-00	Spacer (B)	1
140	A-154140-00	Cup Nut	1	201	A-192201-00	Housing	1	604	A-025604-02	Dead Handle	1
C01	O-S29	"O" Ring	1	207	A-192207-00	Rotor	1	605	A-107605-00	Dead Handle Joint	1
CP No.	A-192003-01	Throttle Valve Body CP		208	A-152208-00	Rotor Blade	4	A01	BB-609MN	Ball Bearing	1
108	A-192108-01	Throttle Valve Body	1	209	A-152209-00	Cylinder	1	A02	BB-6000MN	Ball Bearing	1
109	A-192109-00	Throttle Valve Bushing	1	(B05)	SP-2.56	Spring Pin	1	A03	BB-606	Ball Bearing	1
117	A-192117-00	Throttle Valve Spring	1	210	A-192210-00	Cylinder Upper Plate	1	A04	BB-6003ZZ	Ball Bearing	1
171	A-192171-00	Inlet Joint (PT)	1	211	A-152211-01	Cylinder Lower Plate	1	B06	NR-211.8	Needle Roller	1
171	A-192171-01	Inlet Joint (NPT)	1	214	A-065214-00	Adjusting Washer (T=0.2)	1	C05	O-2030	"O" Ring	1
B01	NR-423FR	Needle Roller	1	214	A-065214-01	Adjusting Washer (T=0.3)	1	D02	CS-58B	Cap Screw	1
B02	SP-320	Spring Pin	1	214	A-065214-02	Adjusting Washer (T=0.5)	1	E02	PW-5	Plain Washer	1
C02	O-S16	"O" Ring	1	221	A-192221-00	Spindle Bearing Cover	1	E03	PW-8	Plain Washer	1
C03	O-S14	"O" Ring	1	222	A-006222-00	Felt Ring	1	G02	SR-SA9	Snap Ring	1
C04	O-P20	"O" Ring	1	237	A-192237-00	Muffler Pad	2	H01	K-338F	Key	1
				250	A-192250-00	Exhaust Cover	1	Z01	NP-0112	Name Plate	1
				251	A-192251-00	Exhaust Valve	1	Z02	NPN-0X3.2	Screw Rivet	4

□ CP No. denotes the assembled parts comprising of more than 1 pc. of parts.

□ #209 and 335 are supplied together with parts shown in ().

□ Specify parts number and quantity in ordering.

The related parts are shown in the thick frame.

■ Standard Accessories: 1 pc. Open-End Wrench,

1 pc. Hex. Pin Wrench.

MANUFACTURER:
FUJI AIR TOOLS CO., LTD.

1-14, Kamiji 2-chome, Higashinari-ku, Osaka 537, Japan
Tel.: (06) 972-2335 (Overseas Dept) Fax: (06) 972-2250