



USER MANUAL

ANGLE GRINDERS

MODELS : FA-5E-2, -2F



FA-5E-2

FA-5E-2F

SPECIFICATIONS

Model	Max. Dia (Grinding Wheel)		Free Speed min ⁻¹	Spindle Thread Size in	Angle Head Height		Overall Length		Mass		Max. Air Consumption		Air Inlet Thread Size in
	mm	in			mm	in	mm	in	kg	lb	Nm ³ /min	NI ³ /min	
FA-5E-2	125×6×22.2	5×1/4×7/8	12,000	M8-P1.25(F)	70	2 3/4	244	9 39/64	2.1	4.6	0.95	33.5	PT or NPT 3/8
FA-5E-2F	125×6×22.2	5×1/4×7/8	12,000	M8-P1.25(F)	70	2 3/4	282	11 7/64	2.1	4.6	0.95	33.5	PT or NPT 3/8

Air Hose Size: 9.5mm (3/8")

The performance figures are at 0.63 MPa(6.3bar).



Refer to "The Instructions and Warning for Safety Use" enclosed in each tool box.

FUJI AIR TOOLS CO., LTD.

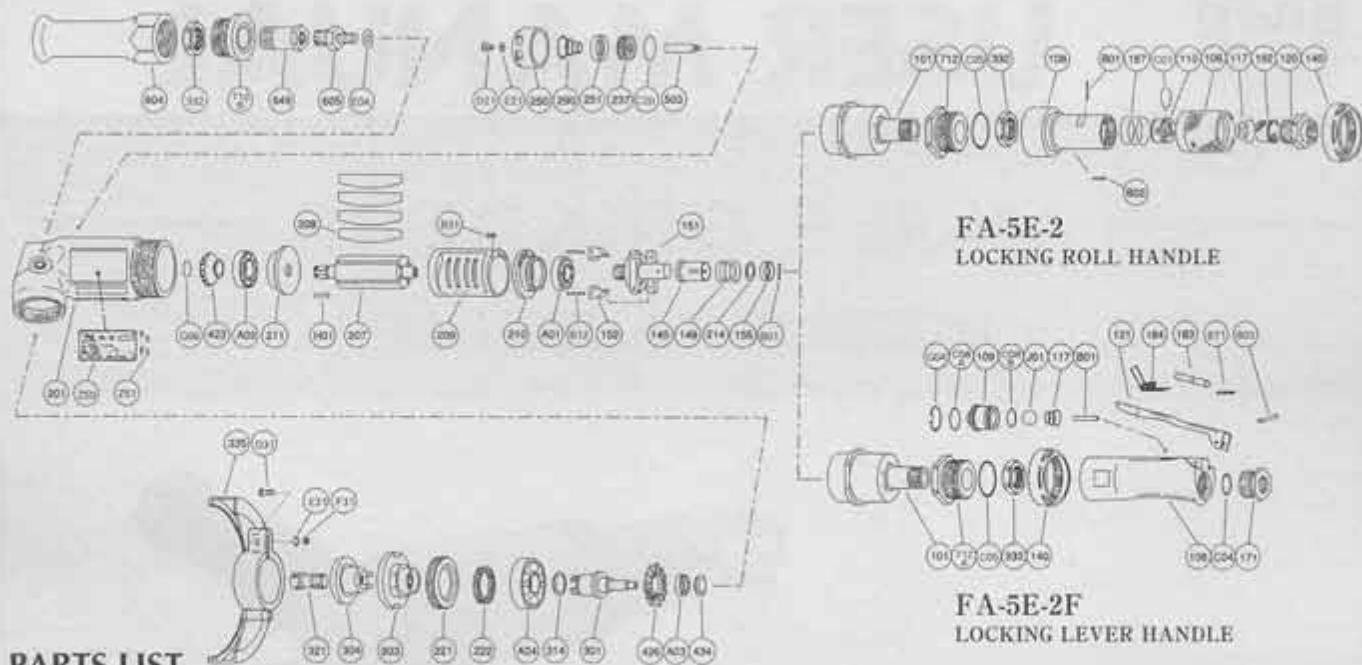
2-1-14 Kamiji, Higashinari-ku, Osaka 537-0003, Japan

Tel : (06) 6972-2335

Fax : (06) 6972-2250

PARTS LIST MODEL : FA-5E-2, -2F

EXPLODED VIEW



PARTS LIST

Index No.	Parts No.	Parts Name	Qt.	Index No.	Parts No.	Parts Name	Qt.	Index No.	Parts No.	Parts Name	Qt.				
FA-5E-2 LOCKING ROLL HANDLE TYPE															
Asy No.	A-192001-00 Housing Cover Assy														
101	A-192101-00	Housing Cover	1	C08A	O-S16	"O" Ring	1	222	A-006222-00	Felt Ring	1				
332	A-192332-00	Lock Nut	1	C08B	O-S14	"O" Ring	1	237	A-192237-00	Muffler Pad	2				
712A	A-192712-00	Damper	1	C04	O-P20	"O" Ring	1	250	A-192250-01	Exhaust Cover	1				
C05	O-S29	"O" Ring	1	G04	SR-R20	Snap Ring	1	251	A-192251-00	Exhaust Valve	1				
Asy No.	A-192003-00 Throttle Valve Body Assy														
106	A-086106-00	Throttle Valve Handle	1	J01	B-9/16U	Urethane Ball	1	290	A-192290-00	Muffler Spring	1				
108	A-192108-00	Throttle Valve Body	1	Asy No.	A-192019-00 Lock Lever Assy										
110	A-086110-00	Throttle Valve	1	121	A-192121-00	Throttle Valve Lever	1	301	A-192301-00	Wheel Spindle	1				
117	A-086117-00	Throttle Valve Spring	1	183	G-144183-02	Lock Key	1	303	A-192303-00	Wheel Flange (A)	1				
120	A-086120-00	Throttle Valve Cover (PT)	1	184	G-144184-00	Lock Spring	1	304	A-192304-01	Wheel Flange (B)	1				
	A-086120-01	Throttle Valve Cover (NPT)	1	B71	SP-218	Spring Pin	1	314	A-006314-00	Wheel Spindle Washer (T=0.2)	1				
182	A-086182-00	Strainer	1	FA-5E-2, FA-5E-2F											
187	A-086187-00	Throttle Valve Handle Spring	1	Asy No.	A-107010-00 Governor Weight Assy										
B01	NR-415	Needle Roller	1	151	A-107151-01	Governor Cage	1	321	A-066321-00	Detent Bolt	1				
B02	NR-413	Needle Roller	1	152	A-010152-00	Governor Weight	2	335	A-192335-00	Wheel Guard	1				
C01	O-S20	"O" Ring	1	B12	GP-2.516GCH	Grooved Pin	2	D31	HS-625	Hexagon Bolt	1				
FA-5E-2F LOCKING LEVER HANDLE TYPE															
Asy No.	A-192001-01 Housing Cover Assy														
101	A-192101-00	Housing Cover	1	Asy No.	A-192014-00 Dead Handle Assy										
140	A-154140-00	Cup Nut	1	604	A-192604-00	Dead Handle	1	423	A-192423-00	Bevel Pinion	1				
332	A-192332-00	Lock Nut	1	Asy No.	A-192039-00 Damper Assy										
712A	A-192712-00	Damper	1	332	A-192332-00	Lock Nut	1	426	A-192426-00	Bevel Gear	1				
C05	O-S29	"O" Ring	1	649	A-192649-00	Joint	1	434	A-099434-00	Bearing Washer	1				
Asy No.	A-192003-01 Throttle Valve Body Assy														
108	A-192108-01	Throttle Valve Body	1	712B	A-192712-01	Damper	1	503	A-192503-00	Spacer (B)	1				
109	A-192109-00	Throttle Valve Bushing	1	140	A-154140-00	Cup Nut (FA-5E-2)	1	605	A-107605-00	Dead Handle Joint	1				
117	A-192117-00	Throttle Valve Spring	1	145	A-065145-00	Governor Valve	1	A01	BB-609MN	Ball Bearing	1				
171	A-192171-00	Inlet Joint (PT)	1	149	A-093149-03	Governor Valve Spring	1	A02	BB-6000MN	Ball Bearing	1				
	A-192171-01	Inlet Joint (NPT)	1	155	A-065155-00	Governor Valve Spring Holder	1	A03	BB-606	Ball Bearing	1				
B01	NR-423FR	Needle Roller	1	201	A-192201-00	Housing	1	A04	BB-6003ZZ	Ball Bearing	1				
B03	SP-320	Spring Pin	1	207	A-192207-00	Rotor	1	B11	NR-211.8	Needle Roller	1				
				208	A-152208-00	Rotor Blade	4	C20	O-S30	"O" Ring	1				
				209	A-152209-00	Cylinder	1	D21	CS-58B	Cap Screw	1				
				(B31)	SP-2.56	Spring Pin	1	E21	PW-5	Plain Washer	1				
				210	A-192210-00	Cylinder Upper Plate	1	E04	PW-8	Plain Washer	1				
				211	A-152211-01	Cylinder Lower Plate	1	G06	SR-G9	Snap Ring	1				
				214	A-065214-00	Adjusting Washer (T=0.2)	1	H01	K-338F	Key	1				
					A-065214-01	Adjusting Washer (T=0.3)	1	Z50	NP-0119	Name Plate	1				
					A-065214-02	Adjusting Washer (T=0.5)	1	Z51	NPN-0×3.2	Screw Rivet	4				
				221	A-192221-00	Spindle Bearing Cover	1								

□ Ass'y No. denotes the assembled parts comprising of more than 1 pc. of parts.

The related parts are shown in the thick frame.

□ #209 and 335 are supplied together with parts shown in ().

□ Specify parts number and quantity in ordering.

■ Standard Accessories: F-706..... 6mm Hex Pin Wrench I.
F-110..... 26mm Open-End Wrench I.