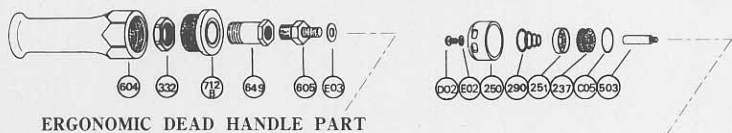


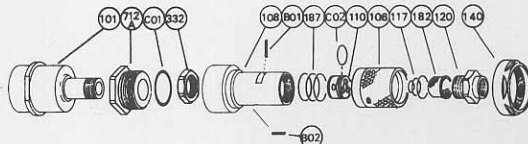
EXPLODED VIEW

5E-1, -1F

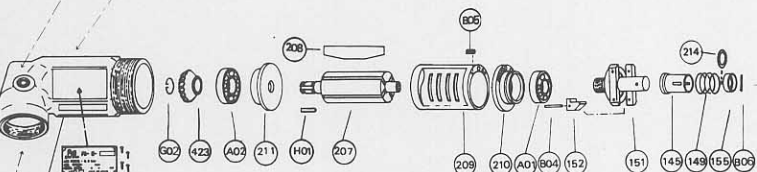


ERGONOMIC DEAD HANDLE PART

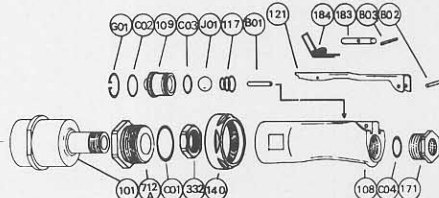
5E-1



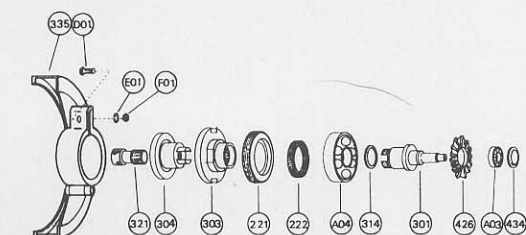
ERGONOMIC LOCKING HANDLE PART : ROLL TYPE



5E-1F



ERGONOMIC LOCKING HANDLE PART : LEVER TYPE



FA-5E-1, -1F

PARTS LIST

Index No.	Parts No.	Parts Name	Qt.	Index No.	Parts No.	Parts Name	Qt.	Index No.	Parts No.	Parts Name	Qt.
FA-5E-1 (ERGONOMIC) LOCKING HANDLE ROLL TYPE				FA-5E-1				FA-5E-1F (ERGONOMIC) LOCKING HANDLE LEVER TYPE			
CP No.	A-192001-00	Housing Cover CP		CP No.	A-192019-00	Locking Lever CP		CP No.	A-192014-00	Dead Handle CP	
101	A-192101-00	Housing Cover	1	121	A-192121-00	Throttle Valve Lever	1	604	A-192604-00	Dead Handle	1
332	A-192332-00	Lock Nut	1	183	G-144183-02	Lock Key	1	CP No.	A-192039-00	Damper CP	
712A	A-192712-00	Damper	1	184	G-144184-00	Lock Spring	1	332	A-192332-50	Lock Nut	1
C01	O-S29	"O" Ring	1	B03	SP-218	Spring Pin	1	649	A-192649-00	Joint	1
CP No.	A-192003-00	Throttle Valve Body CP		FA-5E-1F (ERGONOMIC) LOCKING HANDLE LEVER TYPE				712B	A-192712-01	Damper	1
106	A-086106-00	Throttle Valve Handle	1	140	A-154140-00	Cup Nut	1	140	A-154140-00	Cup Nut	1
108	A-192108-00	Throttle Valve Body	1	145	A-065145-00	Governor Valve	1	145	A-065145-00	Governor Valve	1
110	A-086110-00	Throttle Valve	1	149	G-087149-00	Governor Valve Spring	1	149	G-087149-00	Governor Valve Spring	1
117	A-086117-00	Throttle Valve Spring	1	155	A-065155-00	Governor Valve Spring Holder	1	155	A-065155-00	Governor Valve Spring Holder	1
120	A-086120-00	Throttle Valve Cover (PT)	1	201	A-192201-00	Housing	1	201	A-192201-00	Housing	1
120	A-086120-01	Throttle Valve Cover (NPT)	1	207	A-192207-00	Rotor	1	207	A-192207-00	Rotor	1
182	A-086182-00	Strainer	1	208	A-152208-00	Rotor Blade	4	208	A-152208-00	Rotor Blade	4
187	A-086187-00	Throttle Valve Handle Spring	1	209	A-152209-00	Cylinder	1	209	A-152209-00	Cylinder	1
B01	NR-415	Needle Roller	1	(B05)	SP-2.56	Spring Pin	1	(B05)	SP-2.56	Spring Pin	1
B02	NR-413	Needle Roller	1	210	A-192210-00	Cylinder Upper Plate	1	210	A-192210-00	Cylinder Upper Plate	1
C02	O-S20	"O" Ring	1	211	A-152211-01	Cylinder Lower Plate	1	211	A-152211-01	Cylinder Lower Plate	1
FA-5E-1F (ERGONOMIC) LOCKING HANDLE LEVER TYPE				214	A-065214-00	Adjusting Washer (T=0.2)	1	214	A-065214-00	Adjusting Washer (T=0.2)	1
CP No.	A-192001-01	Housing Cover CP		214	A-065214-01	Adjusting Washer (T=0.3)	1	214	A-065214-01	Adjusting Washer (T=0.3)	1
101	A-192101-00	Housing Cover	1	214	A-065214-02	Adjusting Washer (T=0.5)	1	214	A-065214-02	Adjusting Washer (T=0.5)	1
140	A-154140-00	Cup Nut	1	221	A-192221-00	Spindle Bearing Cover	1	221	A-192221-00	Spindle Bearing Cover	1
332	A-192332-00	Lock Nut	1					222	A-006222-00	Felt Ring	1
712A	A-192712-00	Damper	1					237	A-192237-00	Muffler Pad	2
C01	O-S29	"O" Ring	1					250	A-192250-00	Exhaust Cover	1
CP No.	A-192003-01	Throttle Valve Body CP						251	A-192251-00	Exhaust Valve	1
108	A-192108-01	Throttle Valve Body	1					290	A-192290-00	Muffler Spring	1
109	A-192109-00	Throttle Valve Bushing	1					301	A-192301-00	Wheel Spindle	1
117	A-192117-00	Throttle Valve Spring	1					303	A-192303-00	Wheel Flange (A)	1
171	A-192171-00	Inlet Joint (PT)	1					304	A-192304-00	Wheel Flange (B) (-1:22MM)	1
171	A-192171-01	Inlet Joint (NPT)	1					304	A-192304-01	Wheel Flange (B) (-1F:22MM)	1
B01	NR-423FR	Needle Roller	1					314	A-006314-00	Wheel Spindle Washer (T=0.2)	1
B02	SP-320	Spring Pin	1					314	A-006314-01	Wheel Spindle Washer (T=0.3)	1
C02	O-S16	"O" Ring	1					314	A-006314-02	Wheel Spindle Washer (T=0.5)	1
								321	A-006321-00	Detent Bolt	1
								335	A-192335-00	Wheel Guard	1
								(D01)	HS-625	Hexagon Bolt	1
								(E01)	SW-6	Spring Washer	1
								(F01)	N-6	Nut	1
								423	A-192423-00	Bevel Pinion	1
								426	A-192426-00	Bevel Gear	1
								434	A-099434-00	Bearing Washer	1
								503	A-192503-00	Spacer (B)	1
								605	A-107605-00	Dead Handle Joint	1
								A01	BB-609MN	Ball Bearing	1
								A02	BB-6000MN	Ball Bearing	1
								A03	BB-606	Ball Bearing	1
								A04	BB-6003ZZ	Ball Bearing	1
								B06	NR-211.8	Needle Roller	1
								C05	O-2030	"O" Ring	1
								D02	CS-58B	Cap Screw	1
								E02	PW-5	Plain Washer	1
								E03	PW-8	Plain Washer	1
								G02	SR-SA9	Snap Ring	1
								H01	K-338F	Key	1
								Z01	NP-0111	Name Plate	1
								Z02	NPX-0X3.2	Screw Rivet	4

CP No. denotes the assembled parts comprising of more than 1 pc. of parts.

Specify parts number and quantity in ordering.

The related parts are shown in the thick frame.

Standard Accessories: 1 pc. Open-End Wrench.

#209 and 335 are supplied together with parts shown in ().

1 pc. Hex. Pin Wrench.

MANUFACTURER:
FUJI AIR TOOLS CO., LTD.

1-14, Kamiji 2-chome, Higashinari-ku, Osaka 537, Japan
Tel.: (06) 972-2335 (Overseas Dept) Fax: (06) 972-2250