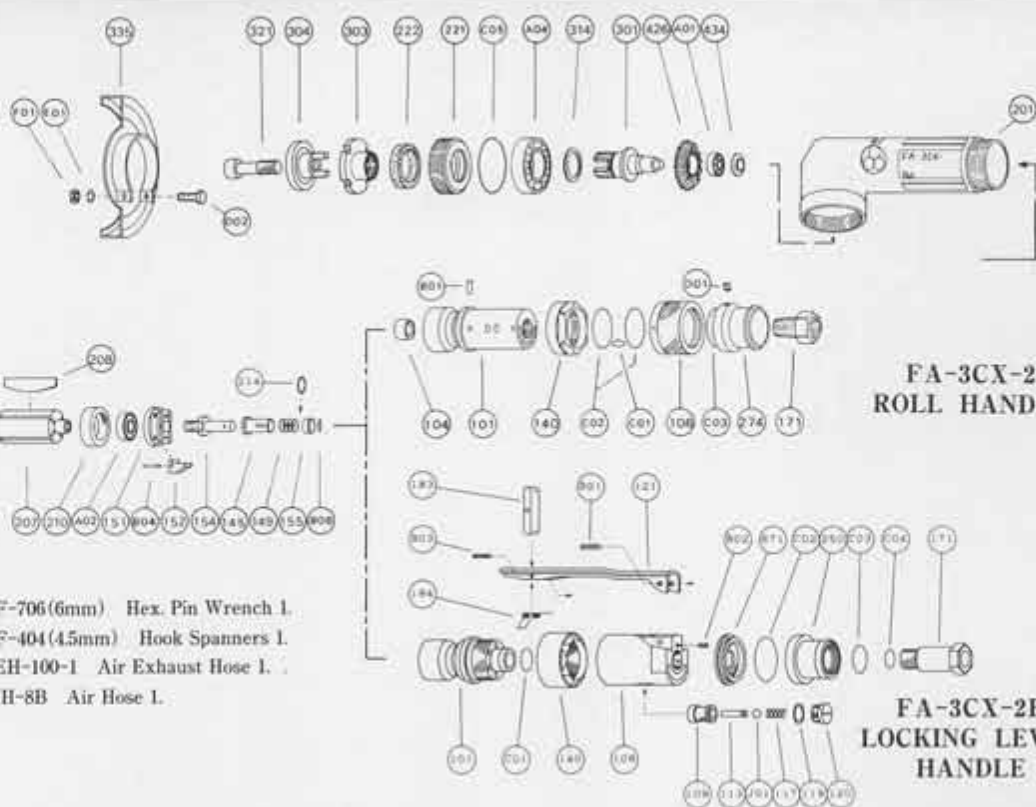


EXPLODED VIEW



- Standard Accessories : F-706(6mm) Hex. Pin Wrench 1.
 F-404(4.5mm) Hook Spanners 1.
 EH-100-1 Air Exhaust Hose 1.
 IH-8B Air Hose 1.

PARTS LIST

Index No.	Parts No.	Parts Name	Qt.	Index No.	Parts No.	Parts Name	Qt.	Index No.	Parts No.	Parts Name	Qt.
ROLL HANDLE PART FA-3CX-2				171	W-100171-01	Inlet Joint (NPT)	1	(B05)	SP-26	Spring Pin	1
LOCKING LEVER HANDLE PART FA-3CX-2F				250	G-209250-00	Exhaust Cover	1	210	A-124210-00	Cylinder Upper Plate	1
CP No.	A-125001-00	"R" Housing Cover CP		671	G-209671-00	Exhaust Cover Joint	1	211	A-124211-00	Cylinder Lower Plate	1
101	A-125001-50	Housing Cover	1	B02	SP-2.56	Spring Pin	1	214	A-066214-00	Adjusting Washer (Shim)	1
(104)	A-125104-00	Bushing	1	C02	O-S28	"O" Ring	1	221	A-124221-00	Spindle Bearing Cover	1
106	A-125106-00	Throttle Valve Handle	1	C03	O-S16	"O" Ring	1	222	A-006222-00	Felt Ring	1
140	A-125140-00	Cup Nut	1	C04	O-S10	"O" Ring	1	303	A-066303-01	Wheel Flange (A)	1
171	IB-202000	Inlet Bushing (PT)	1	J01	B-5/16U	Ball	1	314	A-066314-00	Wheel Spindle Washer	1
171	IB-202N00	Inlet Bushing (NPT)	1	FA-3CX-2, -2F				321	A-021321-01	Detent Bolt	1
274	A-125274-00	Exhaust Hose Joint	1	CP No.	A-122019-01	"F" Lock Lever CP		335	A-124335-02	Wheel Guard	1
B01	NR-2.58	Needle Roller	1	121	A-122121-00	Throttle Valve Lever	1	(D02)	HS-625	Hexagon Bolt	1
C01	O-P7	"O" Ring	1	183	G-144183-02	Lock Key	1	E01	SW-6	Spring Washer	1
C02	O-G25	"O" Ring	2	184	G-144184-00	Lock Spring	1	(F01)	N-6	Nut	1
C03	O-S25	"O" Ring	1	B03	SP-218	Spring Pin	1	423	A-124423-01	Bevel Pinion	1
D01	SS-46C	Set Screw	1	ROLL HANDLE PART FA-3CX-2				434	A-099434-00	Bearing Washer	1
LOCKING LEVER HANDLE PART FA-3CX-2F				CP No.	A-124010-00	Governor Weight CP		440	A-124440-00	Ring	1
CP No.	A-184001-00	Housing Cover CP		151	A-124151-00	Governor Cage	1	A01	BB-606	Ball Bearing	1
101	A-184101-00	Housing Cover	1	152	A-066152-00	Governor Weight	2	A02	BB-608MN	Ball Bearing	1
140	A-184140-00	Cup Nut	1	154	A-124154-00	Governor Shaft	1	A03	BB-608	Ball Bearing	1
C01	O-S12	"O" Ring	1	B04	GP-212GCH	Grooved Pin	2	A04	BB-6003	Ball Bearing	1
B01	SP-320	Spring Pin	1	CP No.	A-124015-01	Wheel Spindle CP		B06	NR-1.58.8	Needle Roller	1
CP No.	G-209003-00	Throttle Valve Body CP		301	A-124301-00	Wheel Spindle	1	C05	O-S32	"O" Ring	1
108	G-209003-50	Throttle Valve Body	1	426	A-124426-01	Bevel Gear	1	H01	K-2.52.57F	Key	1
(109)	G-144109-00	Throttle Valve Bushing	1	145	A-066145-00	Governor Valve	1	FA-3CX-2			
113	G-144113-00	Throttle Valve Rod	1	149	A-076149-00	Governor Valve Spring	1	304	A-021304-04	Wheel Flange (B) 15	1
117	D-021117-00	Throttle Valve Spring	1	155	A-066155-00	Governor Valve Spring Holder	1	FA-3CX-2F			
119	D-021119-00	T.V. Cover Packing	1	201	A-125201-00	Housing	1	304	A-021304-02	Wheel Flange (B) 100X6X15.88	1
120	D-021120-00	Throttle Valve Cover	1	207	A-124207-00	Rotor	1				
171	W-100171-00	Inlet Joint (PT)	1	208	A-124208-00	Rotor Blade	4				
				209	A-124209-00	Cylinder	1				

CP No. denotes the assembled parts comprising of more than 1 pc. of parts.
 The related parts are shown in the thick frame.

#101, 108, 209 and 335 are supplied together with parts shown in ().
 Specify parts number and quantity in ordering.

MANUFACTURER:
FUJI AIR TOOLS CO., LTD.

1-14, Kamiji 2-chome, Higashinari-ku, Osaka 537, Japan
 Tel. : (06) 972-2335 (Overseas Dept) Fax : (06) 972-2250