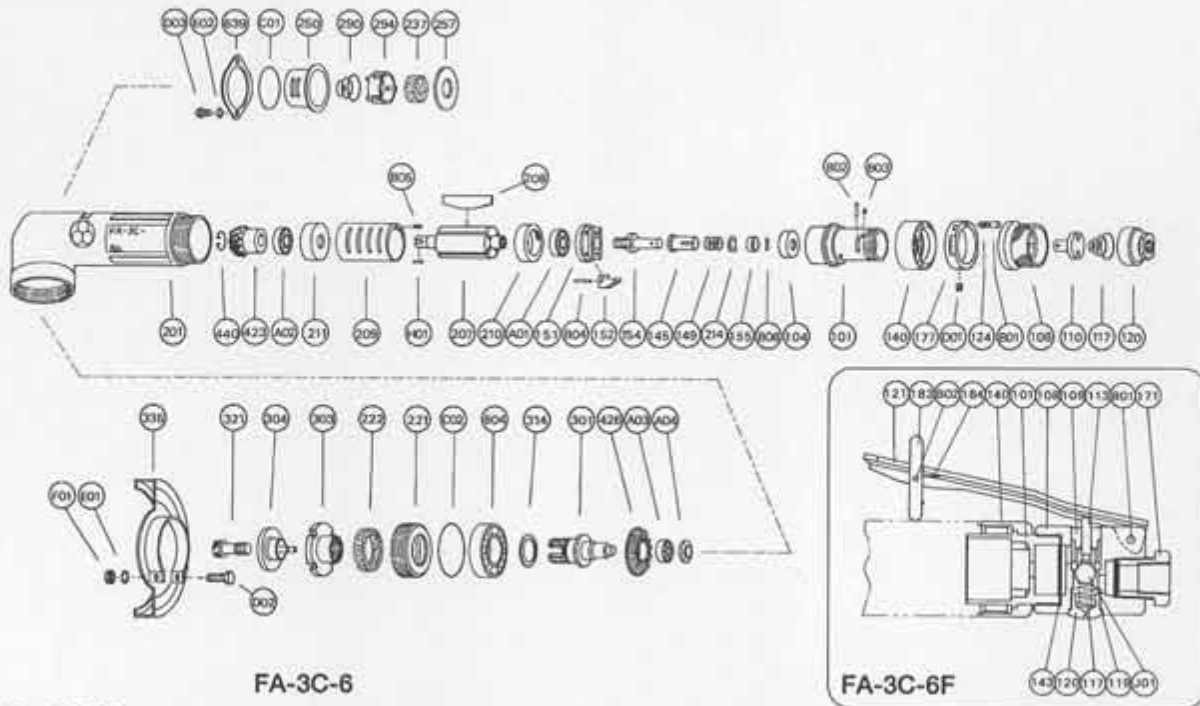


EXPLODED VIEW

PARTS LIST

Index No.	Parts No. FA-3C-6,-6F	Parts Name	Qt.	Index No.	Parts No. FA-3C-6,-6F	Parts Name	Qt.	Index No.	Parts No. FA-3C-6,-6F	Parts Name	Qt.
Roll Handle Part FA-3C-6				B01	SP-320	Spring Pin	1	214	A-066214-03	Adjusting Washer (T=0.5)	1
Housing Cover CP				J01	B-5/16U	Ball	1	221	A-124221-00	Spindle Bearing Cover	1
CP No.	A-124001-00	Housing Cover CP		CP No.	A-122019-01	Locking Lever CP		222	A-006222-00	Felt Ring	1
101	A-124001-50	Housing Cover	1	121	A-122121-00	Throttle Valve Lever	1	257	A-124257-00	Washer	1
(104)	A-066104-00	Bushing	1	183	G-144183-02	Safety Lock	1	301	A-124301-00	Wheel Spindle	1
106	A-124106-00	Throttle Valve Handle	1	184	G-144184-00	Safety Lock Spring	1	303	A-066303-01	Wheel Flange (A)	1
110	G-005110-00	Throttle Valve	1	B02	SP-218	Spring Pin	1	304	A-124304-00	Wheel Flange (B)	1
117	G-042117-00	Throttle Valve Spring	1	FA-3C-6,-6F							
120	G-005120-00	Throttle Valve Cover (PT)	1	CP No.	A-124010-00	Governor Weight CP		314	A-006314-00	Wheel Spindle Washer (T=0.2)	1
120	G-005120-01	Throttle Valve Cover (NPT)	1	151	A-124151-00	Governor Cage	1	314	A-006314-01	Wheel Spindle Washer (T=0.3)	1
124	A-124124-00	Knock Spring	2	152	A-066152-00	Governor Weight	2	314	A-006314-02	Wheel Spindle Washer (T=0.5)	1
140	A-124140-00	Cup Nut	1	154	A-12415400	Governor Shaft	1	321	A-021321-01	Detent Bolt	1
177	A-124177-00	Throttle Handle Step	1	B04	GP-212GCH	Grooved Pin	2	335	A-124335-02	Wheel Guard	1
B01	NR-37	Needle Roller	2	CP No.	A-099012-00	Exhaust Cover CP		(D02)	HS-825	Hexagon Bolt	1
B02	NR-316.8	Needle Roller	1	237	A-093237-00	Muffler Pad	1	(E01)	SW-6	Spring Washer	1
B03	NR-2.58	Needle Roller	1	250	A-099250-00	Exhaust Cover	1	F01	N-6	Nut	1
D01	SS-56C	Set Screw	1	290	A-096290-00	Muffler Spring	1	423	A-124423-01	Bevel Pinion	1
Locking Lever Handle Part FA-3C-6F				294	A-099294-00	Muffler Cover	1	426	A-124426-01	Bevel Gear	1
CP No.	A-124001-01	Housing Cover CP		C01	O-S30	"O" Ring	1	434	A-099434-00	Bearing Washer	1
101	A-124101-01	Housing Cover	1	145	A-066145-00	Governor Valve	1	440	A-124440-00	Ring	1
140	A-124140-00	Cup Nut	1	149	A-076149-00	Governor Valve Spring	1	639	A-099639-00	Exhaust Cover Holder	1
143	A-082143-00	Housing Cover Packing (B)	1	155	A-066155-00	Governor Valve Spring Holder	1	A01	BB-608MN	Ball Bearing	1
CP No.	A-124003-00	Throttle Valve CP		201	A-124201-00	Housing	1	A02	BB-608	Ball Bearing	1
108	A-124003-50	Throttle Valve Body	1	207	A-124207-00	Rotor	1	A03	BB-606	Ball Bearing	1
(109)	G-144109-00	Throttle Valve Bushing	1	208	A-124208-00	Rotor Blade	4	A04	BB-6003	Ball Bearing	1
113	G-144113-00	Throttle Valve Rod	1	209	A-124209-00	Cylinder	1	B06	NR-1.58.8	Needle Roller	1
117	D-021117-00	Throttle Valve Spring	1	(B05)	SP-26	Spring Pin	1	C02	O-S32	"O" Ring	1
119	D-021119-00	T.V. Cover Packing	1	210	A-124210-00	Cylinder Upper Plate	1	D03	S-410R	Screw	2
120	D-021120-00	Throttle Valve Cover	1	211	A-124211-00	Cylinder Lower Plate	1	E02	SW-4	Spring Washer	2
171	IB-3020S0	Inlet Bushing (PT)	1	214	A-066214-00	Adjusting Washer (T=0.2)	1	H01	K-2.52.57F	Key	1
171	IB-302NS0	Inlet Bushing (NPT)	1	214	A-066214-01	Adjusting Washer (T=0.3)	1				
				214	A-066214-02	Adjusting Washer (T=0.1)	1				

 CP No. denotes the assembled parts comprising of more than 1 pc. of parts.

 Specify parts number and quantity in ordering.

The related parts are shown in the thick frame.

 Standard Accessories : Hook Spanners 1,

 #101,108,209 and 335 are supplied together with parts shown in ().

Hexagonal Pin Wrenches 1

MANUFACTURER:
FUJI AIR TOOLS CO., LTD.

 1-14, Kamiji 2-chome, Higashinari-ku, Osaka 537, Japan
 Tel. : (06) 972-2335 (Overseas Dept) Fax : (06) 972-2250