



USER MANUAL

ANGLE GRINDERS

MODELS : FA-3C-1, -1F



FA-3C-1F



FA-3C-1

SPECIFICATIONS

Model	Max. Dia. (Grinding Wheel)		Rotational Frequency	Spindle Thread Size	Angle Head Height		Overall Length		Mass		Air Consumption (At Load)		Air Inlet Thread Size	Air Hose Size	
	mm	in			mm	in	mm	in	kg	lb	m ³ /min	ft ³ /min		in	mm
FA-3C-1	75×4×9.5	3×5/32×3/8	15,000	M8-1.25P(F)	63	2 31/64	180	7 3/32	1.1	2.4	0.4	14.1	PT or NPT 1/4	9.5	3/8
FA-3C-1F	75×4×9.5	3×5/32×3/8	15,000	M8-1.25P(F)	63	2 31/64	190	7 31/64	1.1	2.4	0.4	14.1	PT or NPT 1/4	9.5	3/8

The performance figures are at 0.63MPa (6.3bar).

⚠ Refer to "The Instructions and Warning for Safety Use" enclosed in each tool box.

FUJI AIR TOOLS CO., LTD.

2-1-14 Kamiji, Higashinariku, Osaka 537-0003, Japan

Tel : (06) 6972-2335

Fax : (06) 6972-2250

BOLT & NUT SETTERS
SCREW DRIVERS

ABRASIVE TOOLS

DRILLS • TAPPERS

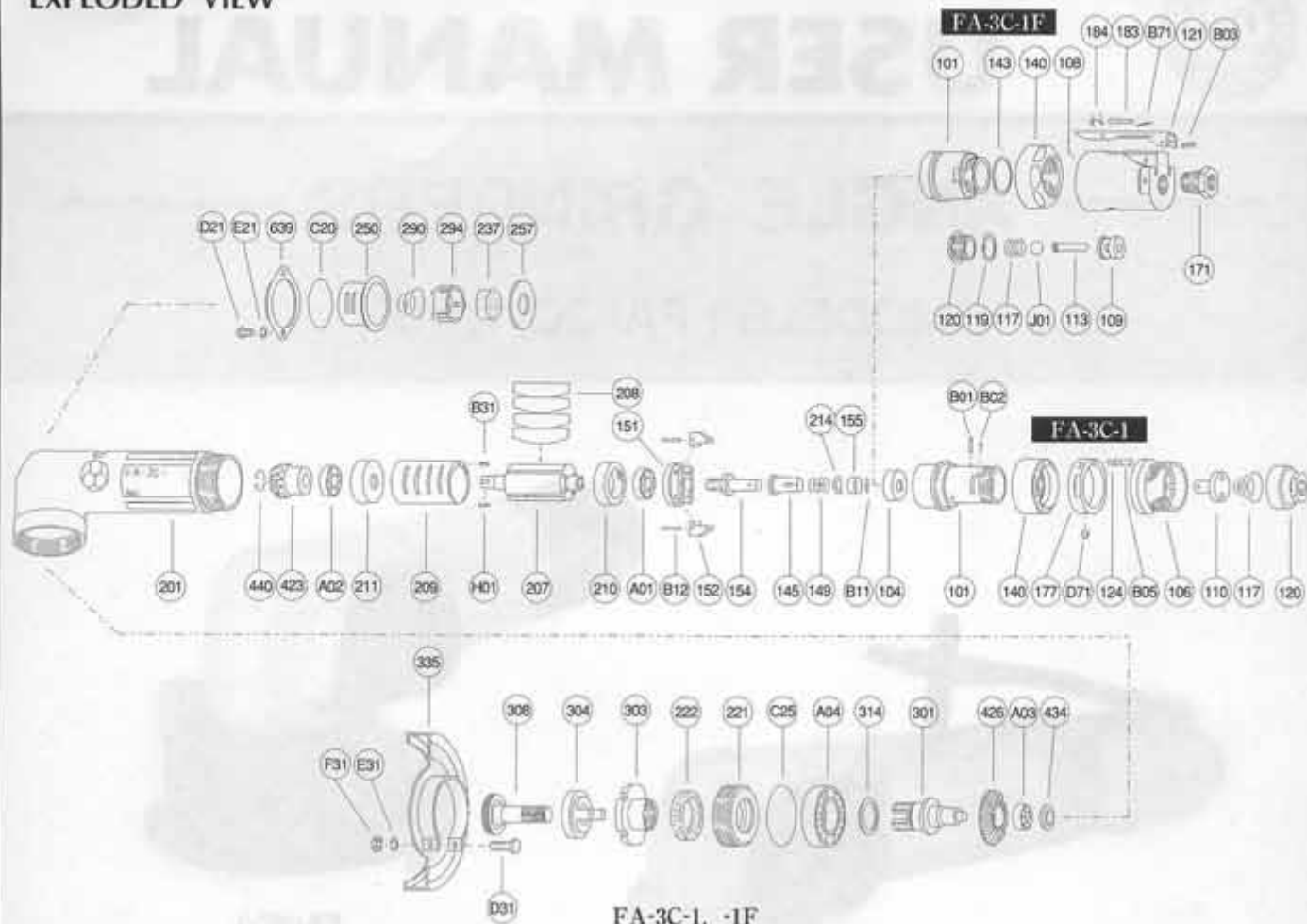
PERCUSSION TOOLS

AIR MOTORS & OTHERS

OTHER PRODUCTS

PARTS LIST MODEL: FA-3C-1, -1F

EXPLODED VIEW



PARTS LIST

Index No.	Parts No.	Parts Name	Qt.	Index No.	Parts No.	Parts Name	Qt.	Index No.	Parts No.	Parts Name	Qt.
FA-3C-1				171	IB-3020S0	Inlet Bushing (PT)	1	(B31)	SP-26	Spring Pin	1
Assy No.	A-124001-00	Housing Cover Assy (PT)		171	IB-302NS0	Inlet Bushing (NPT)	1	210	A-124210-00	Cylinder Upper Plate	1
Assy No.	A-124001-03	Housing Cover Assy (NPT)		B03	SP-320	Spring Pin	1	211	A-124211-00	Cylinder Lower Plate	1
101	A-124001-50	Housing Cover	1	J01	B-5/16U	Urethane Ball	1	214	A-066214-00	Adjusting Washer (T=02) or 1	1
(104)	A-066104-00	Bushing	1	Assy No.	A-122019-01	Lock Lever Assy			A-066214-01	Adjusting Washer (T=03) or 1	1
106	A-124106-00	Throttle Valve Handle	1	121	A-122121-00	Lock Lever	1		A-066214-02	Adjusting Washer (T=01) or 1	1
110	G-005110-00	Throttle Valve	1	183	G-144183-02	Lock Key	1		A-066214-03	Adjusting Washer (T=05)	1
117	G-042117-00	Throttle Valve Spring	1	184	G-144184-00	Lock Spring	1	221	A-124221-00	Spindle Bearing Cover	1
120	G-005120-00	Throttle Valve Cover (PT)	1	B71	SP-218	Spring Pin	1	222	A-006222-00	Felt Ring	1
120	G-005120-01	Throttle Valve Cover (NPT)	1	FA-3C-1				257	A-124257-00	Washer	1
124	A-124124-00	Knock Spring	2	FA-3C-1F				303	A-066303-01	Wheel Flange (A)	1
140	A-124140-00	Cup Nut	1	Assy No.	A-124010-00	Governor Weight Assy		304	A-099304-00	Wheel Flange (B)	1
177	A-124177-00	Throttle Handle Step	1	151	A-124151-00	Governor Cage	1	308	A-124308-00	Spacer	1
B01	NR-316.8	Needle Roller	1	152	A-066152-00	Governor Weight	2	314	A-006314-00	Wheel Spindle Washer (T=02) or 1	1
B02	NR-2.58	Needle Roller	1	154	A-124154-00	Governor Shaft	1		A-006314-01	Wheel Spindle Washer (T=03) or 1	1
B05	NR-37	Needle Roller	2	B12	GP-212GCH	Grooved Pin	2		A-006314-02	Wheel Spindle Washer (T=05)	1
D71	SS-56C	Set Screw	1	Assy No.	A-099012-00	Exhaust Cover Assy		335	A-124335-00	Wheel Guard	1
FA-3C-1F				237	A-093237-00	Muffler Pad	1	(D31)	HS-625	Hexagon Bolt	1
Assy No.	A-124001-01	Housing Cover Assy		250	A-099250-00	Exhaust Cover	1	E31	SW-6	Spring Washer	1
101	A-124101-01	Housing Cover	1	290	A-096290-00	Muffler Spring	1	F31	N-6	Nut	1
140	A-124140-00	Cup Nut	1	294	A-099294-00	Muffler Cover	1	423	A-124423-00	Bevel Pinion	1
143	A-082143-00	Housing Cover Packing (B)	1	C20	O-S30	"O" Ring	1	434	A-099434-00	Bearing Washer	1
Assy No.	A-124003-00	Throttle Valve Body Assy (PT)		Assy No.	A-124015-00	Wheel Spindle Assy		440	A-124440-00	Ring	1
Assy No.	A-124003-03	Throttle Valve Body Assy (NPT)		301	A-124301-00	Wheel Spindle	1	639	A-099639-00	Exhaust Cover Holder	1
108	A-124003-50	Throttle Valve Body	1	426	A-124426-00	Bevel Gear	1	A01	BB-608MN	Ball Bearing	1
(109)	G-144109-00	Throttle Valve Bushing	1	145	A-066145-00	Governor Valve	1	A02	BB-608	Ball Bearing	1
113	G-144113-00	Throttle Valve Rod	1	149	A-099149-01	Governor Valve Spring	1	A03	BB-606	Ball Bearing	1
117	D-021117-00	Throttle Valve Spring	1	155	A-066155-00	Governor Valve Spring Holder	1	A04	BB-6003	Ball Bearing	1
119	D-021119-00	T.V. Cover Packing	1	201	A-124201-00	Housing	1	B11	NR-1.58.8	Needle Roller	1
120	D-021120-00	Throttle Valve Cover	1	207	A-124207-00	Rotor	1	C25	O-S32	"O" Ring	1
				208	A-124208-00	Rotor Blade	4	D21	S-410R	Screw	2
				209	A-124209-00	Cylinder	1	E21	SW-4	Spring Washer	2
								H01	K-2.52.57F	Key	1

□ Assy No. denotes No. of the assembled parts comprising of more than 1 pc. of parts.

The related parts are shown in the thick frame.

□ Index Nos. 101, 108, 209 and 335 are supplied together with parts shown in ().

■ Standard Accessories : F-705 5mm Hex. Pin Wrench 1.

□ Specify parts number and quantity in ordering.

F-404 Hook Spanner 1.