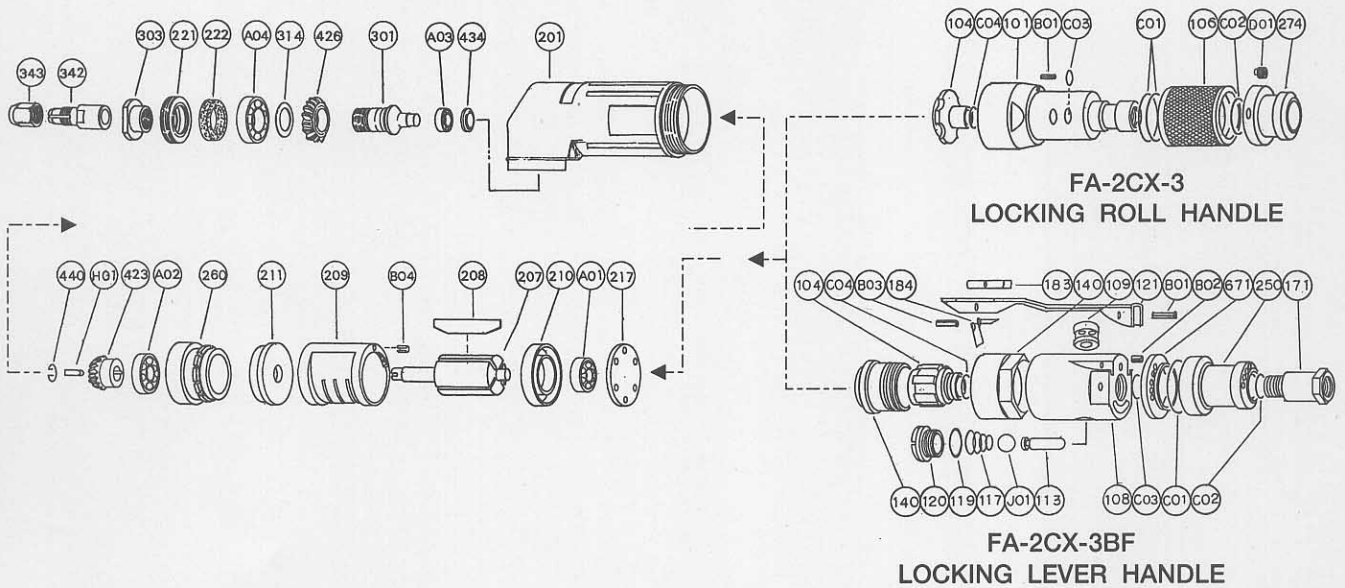


EXPLODED VIEW



PARTS LIST

Index No.	Parts No.	Parts Name	Qt.	Index No.	Parts No.		Parts Name	Qt.
					FA-2CX-3	FA-2CX-3BF		
LOCKING ROLL HANDLE PART FA-2CX-3				104	G-147104-00		Bushing	1
				201	A-127201-00	○	Housing	1
CP No.	G-137001-00	Housing Cover CP		207	A-122207-00	○	Rotor	1
101	G-137101-00	Housing Cover	1	208	G-108208-00	○	Rotor Blade	4
(B01)	SP-26	Spring Pin	1	209	G-108209-00	○	Cylinder	1
106	G-137106-00	Throttle Valve Handle	1	(B04)	SP-26	○	Spring Pin	1
274	A-127274-00	Exhaust Hose Joint	1	210	G-108210-00	○	Cylinder Upper Plate	1
C01	O-P21	"O" Ring	2	211	A-122211-00	○	Cylinder Lower Plate	1
C02	O-P5	"O" Ring	1	217	G-108217-00	○	Bearing Cover	1
C03	O-S18	"O" Ring	1	221	A-005221-00	○	Spindle Bearing Cover	1
D01	SS-58D	Set Screw	1	222	A-005222-00	○	Felt Ring	1
LOCKING LEVER HANDLE PART FA-2CX-3BF				260	A-122260-00	○	Bearing Case	1
CP No.	A-127001-01	Housing Cover CP		301	A-122301-02	○	Wheel Spindle	1
101	A-127101-00	Housing Cover	1	303	A-005303-00	○	Wheel Flange <A>	1
104	A-127104-00	Bushing	1	314	A-005314-00	○	Wheel Spindle Washer	1
140	A-127140-00	Cup Nut	1	342	A-122342-01	○	Collet	1
C04	O-S10	"O" Ring	1	343	G-162343-00	○	Collet Nut	1
CP No.	A-127003-01	Throttle Valve Body CP		423	A-122423-00	○	Bevel Pinion	1
108	A-127003-50	Throttle Valve Body	1	426	A-005426-00	○	Bevel Gear	1
(109)	G-144109-00	Throttle Valve Bushing	1	434	A-122434-00	○	Bearing Washer	1
(B01)	SP-2.56	Spring Pin	1	440	A-122440-00	○	Ring	1
113	G-144113-00	Throttle Valve Rod	1	A01	BB-606	○	Ball Bearing	1
117	D-021117-00	Throttle Valve Spring	1	A02	BB-608MN	○	Ball Bearing	1
119	D-021119-00	T.V. Cover Packing	1	A03	BB-605	○	Ball Bearing	1
120	D-021120-00	Throttle Valve Cover	1	A04	BB-6001	○	Ball Bearing	1
171	W-100171-00	Inlet Joint <PT>	1	C04	O-P7		"O" Ring	1
171	W-100171-01	Inlet Joint <NPT>	1	H01	K-2.52.57	○	Key	1
250	W-106250-00	Exhaust Cover	1	<input type="checkbox"/> CP No. denotes the assembled parts comprising of more than 1 pc. of parts. The related parts are shown in the thick frame.				
671	G-143671-00	Exhaust Cover Joint	1	<input type="checkbox"/> #108, and 209 are supplied together with parts shown in ().				
B02	SP-320	Spring Pin	1	<input type="checkbox"/> ○ mark in the parts No. space denotes the same parts as used in the left-side model.				
C01	O-S28	"O" Ring	1	<input type="checkbox"/> Specify parts number and quantity in ordering.				
C02	O-S16	"O" Ring	1	■ Standard Accessories : 2 pcs. Open-End Wrench, 1 pc. Air Hose 1 pc. Air Exhaust Hose				
C03	O-S10	"O" Ring	2					
J01	B-5/16U	Ball	1					
CP No.	A-122019-01	Locking Lever CP						
121	A-122121-00	Throttle Valve Lever	1					
183	G-144183-02	Safety Lock	1					
184	G-144184-00	Safety Lock Spring	1					
B03	SP-218	Spring Pin	1					

MANUFACTURER:
FUJI AIR TOOLS CO., LTD.

1-14, Kamiji 2-chome, Higashinari-ku, Osaka 537, Japan
 Tel. : (06) 972-2335 (Overseas Dept) Fax : (06) 972-2250