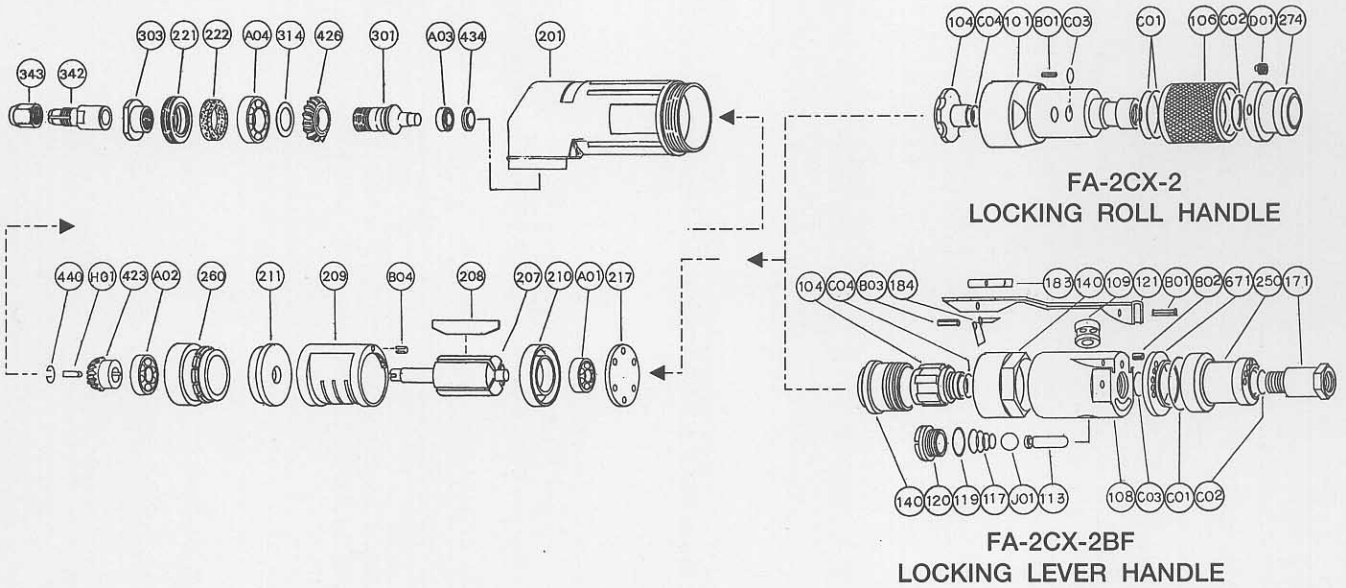


EXPLODED VIEW



PARTS LIST

Index No.	Parts No.	Parts Name	Qt.	Index No.	Parts No.		Parts Name	Qt.	
					FA-2CX-2	FA-2CX-2BF			
<b>LOCKING ROLL HANDLE PART FA-2CX-2</b>				104	G-147104-00		Bushing	1	
				201	A-127201-00	○	Housing	1	
CP No.	G-137001-00	Housing Cover CP		207	A-122207-00	○	Rotor	1	
101	G-137101-00	Housing Cover	1	208	G-108208-00	○	Rotor Blade	4	
(B01)	SP-26	Spring Pin	1	209	G-108209-00	○	Cylinder	1	
106	G-137106-00	Throttle Valve Handle	1	(B04)	SP-26	○	Spring Pin	1	
274	A-127274-00	Exhaust Hose Joint	1	210	G-108210-00	○	Cylinder Upper Plate	1	
C01	O-P21	"O" Ring	2	211	A-122211-00	○	Cylinder Lower Plate	1	
C02	O-P5	"O" Ring	1	217	G-108217-00	○	Bearing Cover	1	
C03	O-S18	"O" Ring	1	221	A-005221-00	○	Spindle Bearing Cover	1	
D01	SS-58D	Set Screw	1	222	A-005222-00	○	Felt Ring	1	
<b>LOCKING LEVER HANDLE PART FA-2CX-2BF</b>				260	A-122260-00	○	Bearing Case	1	
CP No.	A-127001-01	Housing Cover CP		301	A-122301-01	○	Wheel Spindle	1	
101	A-127101-00	Housing Cover	1	303	A-005303-00	○	Wheel Flange <A>	1	
104	A-127104-00	Bushing	1	314	A-005314-00	○	Wheel Spindle Washer	1	
140	A-127140-00	Cup Nut	1	342	G-011342-00	○	Collet <6M/M>	1	
C04	O-S10	"O" Ring	1	342	G-028342-00	○	Collet <1/4>	1	
CP No.	A-127003-01	Throttle Valve Body CP		343	G-162343-00	○	Collet Nut	1	
108	A-127003-50	Throttle Valve Body	1	423	A-122423-00	○	Bevel Pinion	1	
(109)	G-144109-00	Throttle Valve Bushing	1	426	A-005426-00	○	Bevel Gear	1	
(B01)	SP-2.56	Spring Pin	1	434	A-122434-00	○	Bearing Washer	1	
113	G-144113-00	Throttle Valve Rod	1	440	A-122440-00	○	Ring	1	
117	D-021117-00	Throttle Valve Spring	1	A01	BB-606	○	Ball Bearing	1	
119	D-021119-00	T.V. Cover Packing	1	A02	BB-608MN	○	Ball Bearing	1	
120	D-021120-00	Throttle Valve Cover	1	A03	BB-605	○	Ball Bearing	1	
171	W-100171-00	Inlet Joint <PT>	1	A04	BB-6001	○	Ball Bearing	1	
171	W-100171-01	Inlet Joint <NPT>	1	C04	O-P7		"O" Ring	1	
250	W-106250-00	Exhaust Cover	1	H01	K-2.52.57	○	Key	1	
671	G-143671-00	Exhaust Cover Joint	1						
B02	SP-320	Spring Pin	1						
C01	O-S28	"O" Ring	1						
C02	O-S16	"O" Ring	1						
C03	O-S10	"O" Ring	2						
J01	B-5/16U	Ball	1						
CP No.	A-122019-01	Locking Lever CP							
121	A-122121-00	Throttle Valve Lever	1						
183	G-144183-02	Safety Lock	1						
184	G-144184-00	Safety Lock Spring	1						
B03	SP-218	Spring Pin	1						

CP No. denotes the assembled parts comprising of more than 1 pc. of parts. The related parts are shown in the thick frame.

#108, and 209 are supplied together with parts shown in ( ).

○ mark in the parts No. space denotes the same parts as used in the left-side model.

Specify parts number and quantity in ordering.

■ Standard Accessories : 2 pcs. Open-End Wrench, 1 pc. Air Hose  
1 pc. Air Exhaust Hose

MANUFACTURER:  
**FUJI AIR TOOLS CO., LTD.**

1-14, Kamiji 2-chome, Higashinari-ku, Osaka 537, Japan  
Tel. : (06) 972-2335 (Overseas Dept) Fax : (06) 972-2250