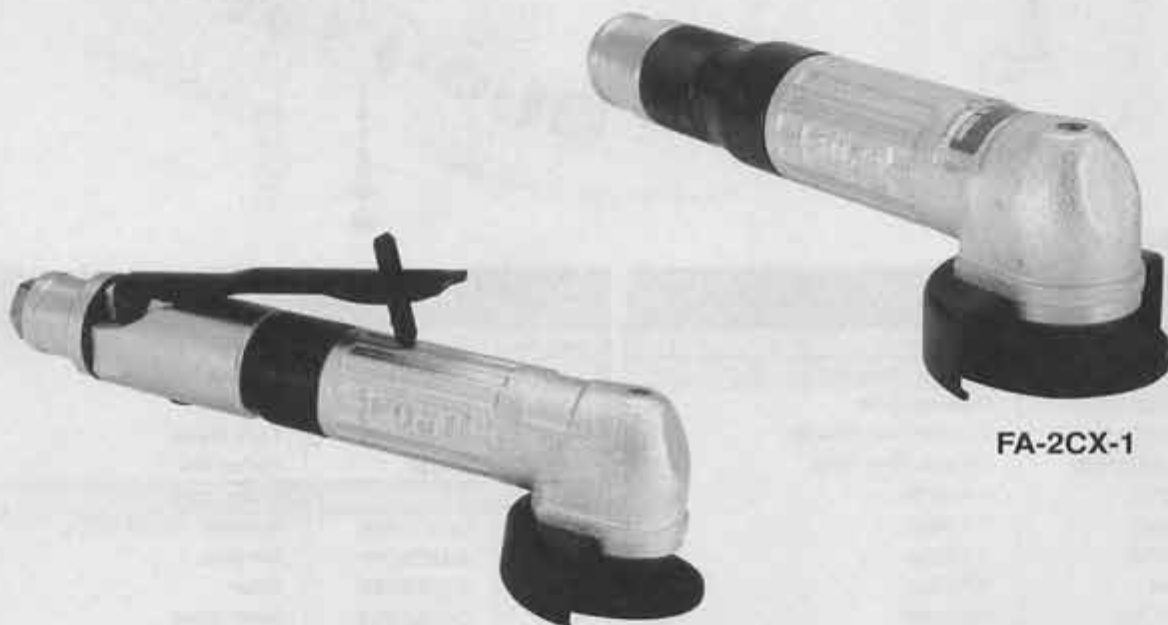




USER MANUAL

ANGLE GRINDERS

MODELS : FA-2CX-1, -1BF



FA-2CX-1

FA-2CX-1BF

SPECIFICATIONS

Model	Max. Dia (Grinding Wheel)		Rotational Frequency	Spindle Thread Size	Angle Head Height		Overall Length		Mass		Max. Air Consumption		Air Inlet Thread Size	Air Hose Size	
	mm	in			mm	in	mm	in	kg	lb	m ³ /min	ft ³ /min		in	mm
FA-2CX-1	50×4×9.5	2×5/32×3/8	15,000	1/4-28UNF(F)	47	1 55/64	197	7 3/4	0.7	1.5	0.40	14.1	PTorNPT 1/4	9.5	3/8
FA-2CX-1BF	50×4×9.5	2×5/32×3/8	15,000	1/4-28UNF(F)	47	1 55/64	226	8 57/64	1.0	2.2	0.40	14.1	PTorNPT 1/4	9.5	3/8

The performance figures are at 0.63 MPa (6.3 bar).

Refer to "The Instructions and Warning for Safety Use" enclosed in each tool box.

FUJI AIR TOOLS CO., LTD.

2-1-14Kamiji, Higashinariku, Osaka 537-0003, Japan

Tel : (06) 6972-2335

Fax : (06) 6972-2250



BOLT & NUT SETTERS
SCREW DRIVERS

ABRASIVE TOOLS

DRILLS · TAPPERS

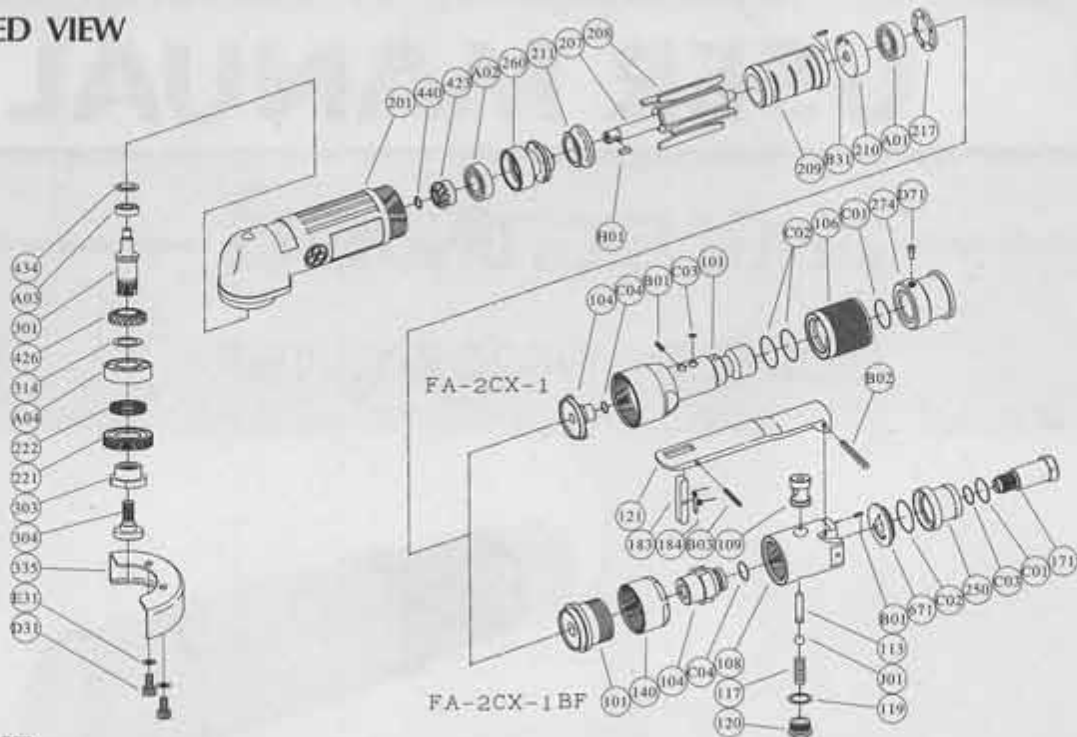
PERCUSSION TOOLS

AIR MOTORS & OTHERS

OTHER PRODUCTS

PARTS LIST MODEL: FA-2CX-1, -1BF

EXPLODED VIEW



PARTS LIST

Index No.	Parts No.	Parts Name	Qt.
FA-2CX-1			
Ass'y No.	G-137001-00	Housing Cover Ass'y	
101	G-137101-00	Housing Cover	1
106	G-137106-00	Throttle Valve Handle	1
274	A-127274-00	Exhaust Hose Joint	1
B01	SP-26	Spring Pin	1
C01	O-S18	"O" Ring	1
C02	O-P20	"O" Ring	2
C03	O-4	"O" Ring	1
D71	SS-58D	Set Screw	1
FA-2CX-1BF			
Ass'y No.	A-127001-01	Housing Cover Ass'y	
101	A-127101-00	Housing Cover	1
104	A-127104-00	Bushing	1
140	A-127140-00	Cup Nut	1
C04	O-S10	"O" Ring	1
Ass'y No.	A-127003-01	Throttle Valve Body Ass'y	
108	A-127003-50	Throttle Valve Body	1
(B01)	SP-2.56	Spring Pin	1
(109)	G-144109-00	Throttle Valve Bushing	1
113	G-144113-00	Throttle Valve Rod	1
117	D-021117-00	Throttle Valve Spring	1
119	D-021119-00	T.V. Cover Packing	1
120	D-021120-00	Throttle Valve Cover	1
171	W-100171-00	Inlet Joint <PT> or	1
	W-100171-01	Inlet Joint <NPT>	1
250	W-106250-00	Exhaust Cover	1
671	G-143671-00	Exhaust Cover Joint	1
B02	SP-320	Spring Pin	1
C01	O-S16	"O" Ring	1
C02	O-S28	"O" Ring	1
C03	O-S10	"O" Ring	1
J01	B-5/16U	Urethane Ball	1

Index No.	Parts No.	Parts Name	Qt.
Ass'y No.	A-122019-01	"F" Lock Lever Ass'y	
121	A-122121-00	Throttle Valve Lever	1
183	G-144183-02	Lock Key	1
184	G-144184-00	Lock Spring	1
B03	SP-218	Spring Pin	1
FA-2CX-1, -1BF			
104	G-147104-00	Bushing <for FA-2CX-1>	1
201	A-127201-00	Housing	1
207	A-122207-00	Rotor	1
208	G-108208-00	Rotor Blade	4
209	G-108209-00	Cylinder	1
(B31)	SP-26	Spring Pin	1
210	G-108210-00	Cylinder Upper Plate	1
211	A-122211-00	Cylinder Lower Plate	1
217	G-108217-00	Bearing Cover	1
221	A-005221-00	Spindle Bearing Cover	1
222	A-005222-00	Felt Ring	1
260	A-122260-00	Bearing Case	1
301	A-122301-00	Wheel Spindle	1
303	A-005303-00	Wheel Flange <A>	1
304	A-122304-01	Wheel Flange 	1
314	A-005314-00	Wheel Spindle Washer	1
335	A-005335-00	Wheel Guard	1
(D31)	CS-410	Cap Screw	2
(E31)	SW-4	Spring Washer	2
423	A-122423-00	Bevel Pinion	1
426	A-005426-00	Bevel Gear	1
434	A-122434-00	Bearing Washer	1
440	A-122440-00	Ring	1
A01	BB-606	Ball Bearing	1
A02	BB-608MN	Ball Bearing	1
A03	BB-605	Ball Bearing	1
A04	BB-6001	Ball Bearing	1
C04	O-P7	"O" Ring <for FA-2CX-1>	1
H01	K-2.52.57F	Key	1

Standard Accessories

F-703	3mm Hex. Pin Wrench	1	EH-50A	Exhaust Hose	1
F-705	5mm Hex. Pin Wrench	1	IH-8B	Inlet Hose	1
F-107	19mm Open-End Wrench	1			

Ass'y No. denotes the assembled parts comprising of more than 1 pc. of parts.
The related parts are shown in the thick frame.

#108, 209 and 335 are supplied together with parts shown in ().

Specify parts number and quantity in ordering.