



USER MANUAL

ANGLE GRINDERS

MODELS : FA-150KG-7,-7F



FA-150KG-7F

SPECIFICATIONS

Model	Capacity				Free Speed min ⁻¹	Overall Length		Mass		Max. Air Consumption		Air Inlet Thread Size in	Air Hose Size	
	Wire Brush		Sanding Disc.			mm	in	kg	lb	Nm ² /min	NF ² /min		mm	in
	mm	in	mm	in										
FA-150KG-7	125X-X15.8	5X-X ⁵ / ₈	180X-X22	7X-X7 ¹ / ₈	5500	243	9 ⁵ / ₁₆	1.8	4	1.15	41	PT or NPT ³ / ₈	12.7	1/2
FA-150KG-7F	125X-X15.8	5X-X ³ / ₈	180X-X22	7X-X7 ¹ / ₈	5500	294	11 ³ / ₁₆	1.7	3.7	1.15	41	PT or NPT ³ / ₈	12.7	1/2

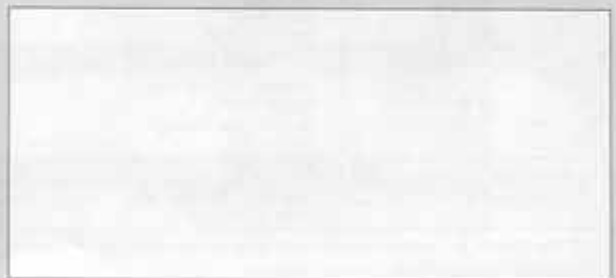
*The performance figures are at 0.63MPa (6.3bar).



Refer to instructions and warning for safety use enclosed in each tool box.

FUJI AIR TOOLS CO., LTD.

1-14, Kamiji 2-chome, Higashinari-ku, Osaka 537-0003, Japan
Tel : (06) 6972-2335
Fax : (06) 6972-2250



BOLT & NUT SETTERS
SCREW DRIVERS

ABRASIVE TOOLS

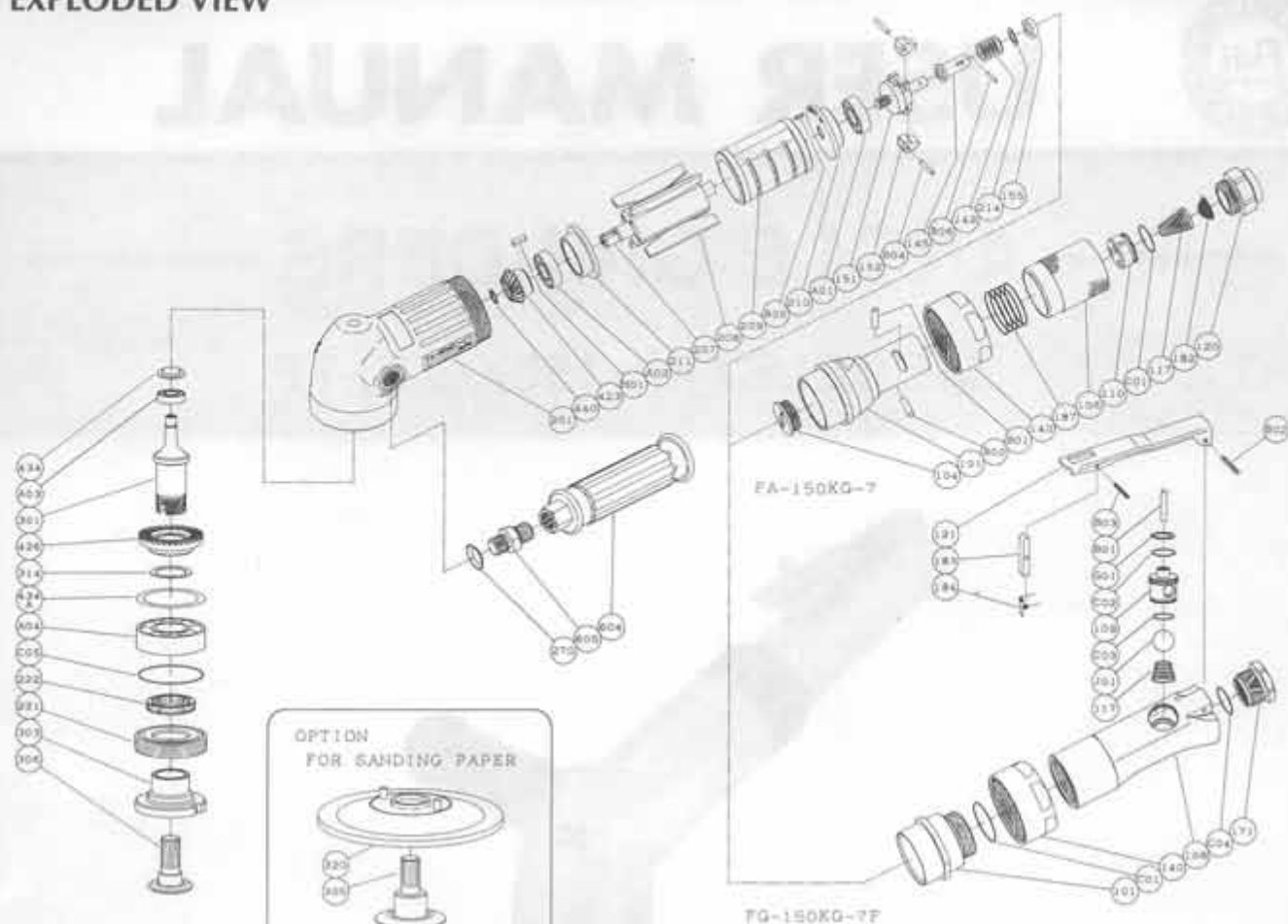
DRILLS • TAPPERS

PERCUSSION TOOLS

AIR MOTORS & OTHERS

OTHER PRODUCTS

EXPLODED VIEW



PARTS LIST

Index No.	Parts No.	Parts Name	Qt.	Index No.	Parts No.	Parts Name	Qt.
FA-150KG-7							
CP No.	A-154001-00	Housing Cover C.P		152	A-010152-00	Governor Weight	2
101	A-154101-00	Housing Cover	1	B04	GP-2.516GCH	Grooved Pin	2
104	A-065104-02	Bushing	1	140	A-154140-00	Cup Nut (For FA-150KG-7)	1
106	A-086106-00	Throttle Valve Handle	1	145	A-065145-00	Governor Valve	1
110	A-086110-00	Throttle Valve	1	149	A-086149-01	Governor Valve Spring	1
117	A-086117-00	Throttle Valve Spring	1	155	A-065155-00	Governor Valve Spring Holder	1
120	A-086120-00	Throttle Valve Cover (PT)	1	201	A-154201-01	Housing	1
120	A-086120-01	Throttle Valve Cover (NPT)	1	207	A-154207-01	Rotor	1
182	A-086182-00	Strainer	1	208	A-152208-00	Rotor Blade	4
187	A-086187-00	Throttle Valve Handle Spring	1	209	A-152209-00	Cylinder	1
B01	NR-415	Needle Roller	1	(B05)	SP-2.56	Spring Pin	1
B02	NR-413	Needle Roller	1	210	A-192210-00	Cylinder Upper Plate	1
C01	O-S20	O"Ring	1	211	A-152211-01	Cylinder Lower Plate	1
FA-150KG-7F							
CP No.	A-192001-03	Housing Cover C.P		214	A-065214-00	Adjusting Washer (T=0.2)	1
101	A-192101-01	Housing Cover	1	214	A-065214-01	Adjusting Washer (T=0.3)	1
140	A-154140-00	Cup Nut	1	214	A-065214-02	Adjusting Washer (T=0.5)	1
C01	O-S29	O"Ring	1	221	A-096221-00	Spindle Bearing Cover	1
CP No.	A-192003-02	Throttle Valve Body C.P		222	A-025222-00	Felt Ring	1
108	A-192108-02	Throttle Valve Body	1	270	H-001270-00	Conical Spring Washer	1
109	A-192109-00	Throttle Valve Bushing	1	301	A-152301-00	Wheel Spindle	1
117	A-192117-00	Throttle Valve Spring	1	303	A-097303-00	Wheel Flange (A)	1
171	A-192171-00	Inlet Joint (PT)	1	306	A-102306-00	Wire Brush Holder Flange	1
171	A-192171-01	Inlet Joint (NPT)	1	314	A-109314-00	Wheel Spindle Washer	1
B01	NR-423FR	Needle Roller	1	423	A-152423-00	Bevel Pinion	1
B02	SP-320	Spring Pin	1	426	A-152426-00	Bevel Gear	1
C02	O-S16	O"Ring	1	434	A-021434-00	Bearing Washer	1
C03	O-S14	O"Ring	1	434A	A-025434-00	Bearing Washer	1
C04	O-P20	O"Ring	1	440	A-107440-00	Ring	1
G01	SR-R20	Snap Ring	1	604	A-025604-02	Dead Handle	1
J01	B-9/16U	Urethane Ball	1	605	A-108605-00	Dead Handle Joint	1
CP No.	A-192019-00	"F" Safety Lever C.P		A01	BB-609MN	Ball Bearing	1
121	A-192121-00	Throttle Valve Lever	1	A02	BB-600MN	Ball Bearing	1
183	G-144183-02	Safety Lock	1	A03	BB-607	Ball Bearing	1
184	G-144184-00	Safety Lock Spring	1	A04	BB-6204	Ball Bearing	1
B03	SP-218	Spring Pin	1	B06	NR-211.8	Needle Roller	1
FA-150KG-7,-7F							
CP No.	A-107010-00	Governor Weight C.P		C05	O-S44	O"Ring	1
151	A-107151-01	Governor Cage	1	H01	K-3310F	Key	1
Option							
For Sanding Paper							
305	A-097305-00	Paper Holder Flange	1				
320	RP-S-5	Rubber Pad	1				

□ CP No. denotes the assembled parts comprising of more than 1 pc. of parts.

The related parts are shown in the thick frame.

□ #209 is supplied together with parts shown in ().

□ Specify parts number and quantity in ordering. ■ Standard Accessory

□ The standard type is for the use with wire brush. F-710-3/8" Hex. Pin Wrench 1.

□ #320 Pad and #305 Paper Holder Flange are needed. F-110-26mm Open-End Wrench 1. in using with Sanding Paper.