



USER MANUAL

ANGLE SANDERS

(120° TYPE)

MODELS : FA-150K-2, -3



FA-150K-2



FA-150K-3

SPECIFICATIONS

Model	Sanding Disc		Wire Brush		Max. Free Speed rpm	Overall Length (about)		Mass (about)		Air Consumption at Max. Output (about)		Air Inlet Thread Size PT or NPT
	mm	in	mm	in		mm	in	kg	lb	Nm ³ /min	Nft ³ /min	
FA-150K-2	150×-×22.2	6×-×7/8	125×-×15.8	5×-×5/8	8,400	210	8 ¹⁷ /64	1.6	3.5	1.0	35.3	3/8"
FA-150K-3	150×-×22.2	6×-×7/8	125×-×15.8	5×-×5/8	8,400	210	8 ¹⁷ /64	1.6	3.5	1.0	35.3	3/8"

All models are 1/2"-16 Female Spindle Type.
Air Hose Size:12.7(1/2")

The performance figures are at 0.63 MPa (6.3 bar).



Refer to "The Instructions and Warning for Safety Use" enclosed in each tool box.

FUJI AIR TOOLS CO., LTD.

2-1-14Kamiji, Higashinariku, Osaka, 537-0003 Japan

Tel : (06) 972-2335

Fax : (06) 972-2250

BOLT & NUT SETTERS
SCREW DRIVERS

ABRASIVE TOOLS

DRILLS · TAPPERS

PERCUSSION TOOLS

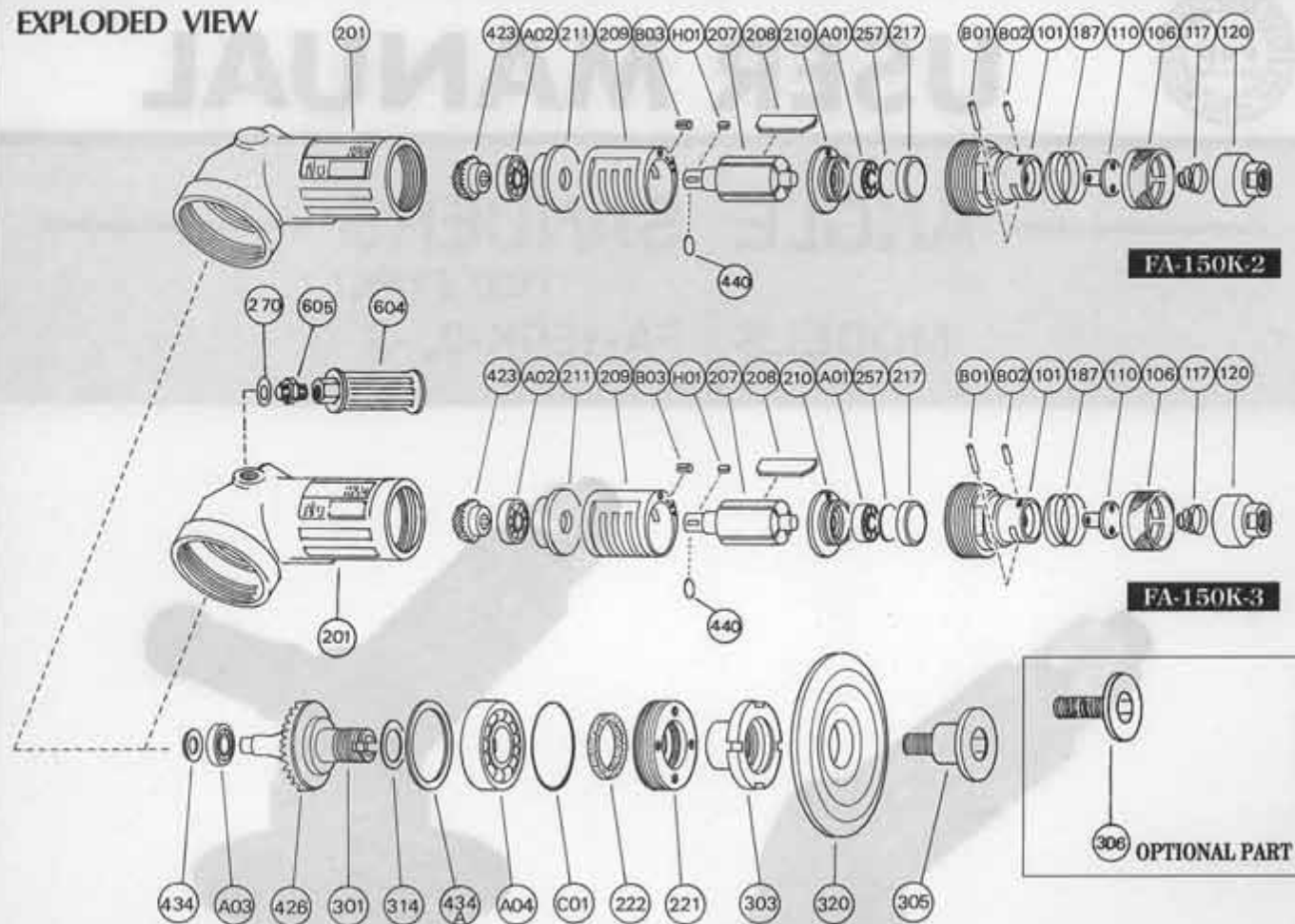
AIR MOTORS & OTHERS

OTHER PRODUCTS



PARTS LIST MODEL: FA-150K-2, -3

EXPLODED VIEW



PARTS LIST

Index No.	Parts No.	Parts Name	Qt.	Index No.	Parts No.	Parts Name	Qt.	Index No.	Parts No.	Parts Name	Qt.
FA-150K-2, -3											
CP No.	A-152001-00	Housing Cover CP		305	A-025305-A	Paper Holder Flange	1	222	A-025222-00	Felt Ring	1
101	A-152101-00	Housing Cover	1	314	A-109314-00	Wheel Spindle Washer (T-0.5)	1	257	A-152257-00	Washer	1
(B0)	NR-2.512	Needle Roller	1	320	RP-5-3	Rubber Backing Pad	1	270	H-001270-00	Conical Spring Washer	1
106	A-152106-00	Throttle Valve Handle	1	423	A-152423-00	Bevel Pinion	1	301	A-152301-00	Wheel Spindle	1
110	A-067110-00	Throttle Valve	1	426	A-152426-00	Bevel Gear	1	303	A-025303-00	Wheel Flange <A>	1
117	G-044117-00	Throttle Valve Spring	1	434	A-021434-00	Bearing Washer	1	305	A-025305-A	Paper Holder Flange	1
120	A-152120-00	Throttle Valve Cover (PT)	1	434A	A-025434-00	Bearing Washer	1	314	A-109314-00	Wheel Spindle Washer (T-0.5)	1
120	A-152120-01	Throttle Valve Cover (NPT)	1	440	A-107440-00	Ring	1	320	RP-5-3	Rubber Backing Pad	1
187	A-011187-01	Throttle Valve Handle Spring	1	A01	BB-609MN	Ball Bearing	1	423	A-152423-00	Bevel Pinion	1
(B0)	NR-420	Needle Roller	1	A02	BB-6000MN	Ball Bearing	1	426	A-152426-00	Bevel Gear	1
FA-150K-2											
201	A-152201-01	Housing	1	A03	BB-607	Ball Bearing	1	434	A-021434-00	Bearing Washer	1
207	A-152207-01	Rotor	1	A04	BB-6204	Ball Bearing	1	434A	A-025434-00	Bearing Washer	1
208	A-152208-00	Rotor Blade	4	C01	O-S44	"O" Ring	1	440	A-107440-00	Ring	1
209	A-152209-00	Cylinder	1	H01	K-3310F	Key	1	604	A-025604-02	Dead Handle	1
(B03)	SP-2.56	Spring Pin	1	FA-150K-3							
210	A-152210-00	Cylinder Upper Plate	1	201	A-152201-02	Housing	1	605	A-108605-00	Dead Handle Joint	1
211	A-152211-01	Cylinder Lower Plate	1	207	A-152207-01	Rotor	1	A01	BB-609MN	Ball Bearing	1
217	A-152217-00	Bearing Cover	1	208	A-152208-00	Rotor Blade	4	A02	BB-6000MN	Ball Bearing	1
221	A-096221-00	Spindle Bearing Cover	1	209	A-152209-00	Cylinder	1	A03	BB-607	Ball Bearing	1
222	A-025222-00	Felt Ring	1	(B03)	SP-2.56	Spring Pin	1	A04	BB-6204	Ball Bearing	1
257	A-152257-00	Washer	1	210	A-152210-00	Cylinder Upper Plate	1	C01	O-S44	"O" Ring	1
301	A-152301-00	Wheel Spindle	1	211	A-152211-01	Cylinder Lower Plate	1	H01	K-3310F	Key	1
303	A-025303-00	Wheel Flange <A>	1	217	A-152217-00	Bearing Cover	1	OPTIONAL PART			
FA-150K-2, -3											
				221	A-096221-00	Spindle Bearing Cover	1	306	A-102306-00	Wire Brush Flange	1

□ CP No. denotes the assembled parts comprising of more than 1 pc. of parts.

□ Specify parts number and quantity in ordering.

The related parts are shown in the thick frame.

■ Standard Accessories : F-710 9.5mm Hex. Pin Wrench 1.

□ #101 and 209 are supplied together with parts show in ().

F-405 Hook Spanner 1.