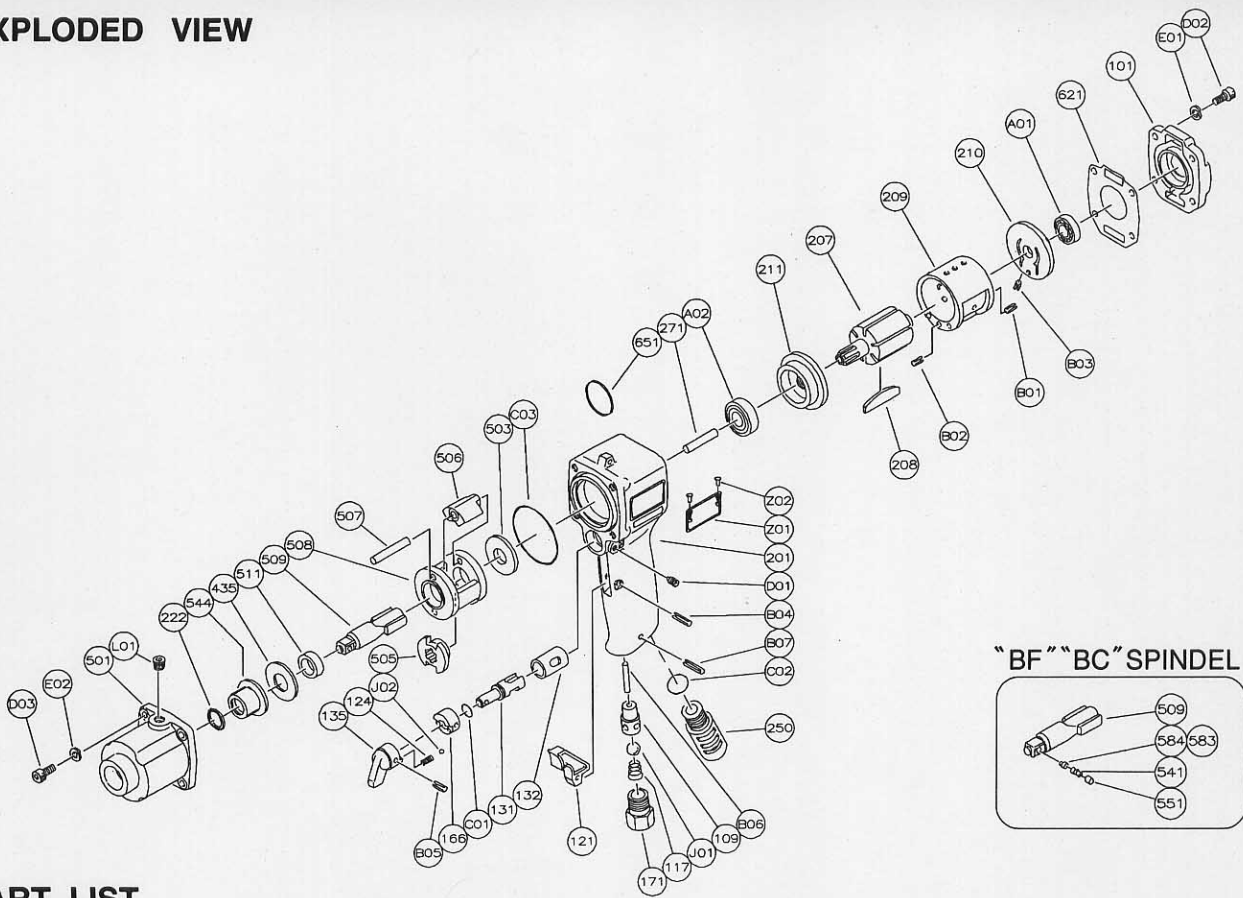
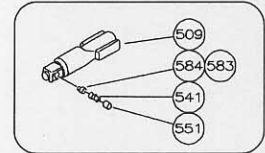


EXPLODED VIEW



“BF” “BC” SPINDEL



PART LIST

| Index No. | Part No. | Part Name | Qt. |
|---------------|--------------------|--------------------------|-----|
| CP No. | W-225006-54 | Housing CP | |
| 109 | W-264109-00 | Throttle Valve Bushing | 1 |
| 132 | W-258132-00 | Reverse Valve Bushing | 1 |
| 201 | W-225201-04 | Housing | 1 |
| CP No. | W-225013-01 | Clutch Housing CP | |
| 222 | W-225222-00 | Felt Ring | 1 |
| 501 | W-225501-01 | Clutch Housing | 1 |
| 544 | W-225544-00 | Clutch Housing Bushing | 1 |
| L01 | PL-1/8 | Plug | 1 |
| 101 | W-225101-01 | Housing Cover | 1 |
| 117 | W-242117-00 | Throttle Valve Spring | 1 |
| 121 | W-252121-00 | Throttle Valve Lever | 1 |
| 124 | G-005124-00 | Knock Spring | 1 |
| 131 | W-258131-00 | Reverse Valve | 1 |
| 135 | W-225135-00 | Reverse Valve Lever | 1 |
| 166 | W-252166-00 | Reverse Valve Cover | 1 |
| 171 | W-242171-00 | Inlet Joint (PT) | 1 |
| 171 | W-241171-01 | Inlet Joint (NPT) | 1 |
| 207 | W-225207-00 | Rotor | 1 |
| 208 | W-027208-00 | Rotor Blade | 6 |
| 209 | W-225209-01 | Cylinder | 1 |
| (B01) | SP-36 | Spring Pin | 1 |
| (B02) | SP-36 | Spring Pin | 1 |
| 210 | W-225210-01 | Cylinder Upper Plate | 1 |
| (B03) | SP-1.56 | Spring Pin | 1 |
| 211 | W-225211-01 | Cylinder Lower Plate | 1 |
| 250 | W-225250-00 | Exhaust Cover | 1 |
| 271 | W-225271-00 | Rotor Pin | 1 |
| 435 | W-225435-00 | Thrust Washer | 1 |
| 503 | W-027503-00 | Spacer (B) | 1 |
| 505 | W-225505-00 | Cam | 1 |
| 506 | W-225506-00 | Clutch | 2 |
| 507 | W-225507-00 | Clutch Pin | 2 |

| Index No. | Part No. | Part Name | Qt. |
|-----------|-------------|----------------------------|-----|
| 508 | W-225508-00 | Clutch Frame | 1 |
| 509 | W-225509-00 | “P” Anvil | 1 |
| 509 | W-225509-05 | “B” Anvil | 1 |
| (541) | W-224541-00 | Button Retainer Spring (F) | 1 |
| (551) | W-224551-00 | Plug | 1 |
| (583) | W-224583-00 | Retainer Button (F) | 1 |
| 509 | W-225509-05 | “B” Anvil | 1 |
| (541) | W-224541-01 | Button Retainer Spring (C) | 1 |
| (551) | W-224551-00 | Plug | 1 |
| (584) | W-224584-00 | Retainer Button (C) | 1 |
| 511 | W-225511-00 | Clutch Frame Bushing | 1 |
| 621 | W-225621-01 | Packing (A) | 1 |
| 651 | W-181651-00 | Horizontal Hanger | 1 |
| A01 | BB-EE3 | Ball Bearing | 1 |
| A02 | BB-EE4 | Ball Bearing | 1 |
| B04 | SP-318 | Spring Pin | 1 |
| B05 | SP-318 | Spring Pin | 1 |
| B06 | NR-326FR | Needle Roller | 1 |
| B07 | SP-322 | Spring Pin | 1 |
| B08 | SP26 | Spring Pin | 1 |
| C01 | O-S12 | “O” Ring | 1 |
| C02 | O-S15 | “O” Ring | 1 |
| C03 | O-S50 | “O” Ring | 1 |
| D01 | SS410D | Set Screw | 1 |
| D02 | CS-516 | Cap Screw | 4 |
| D03 | CS-516 | Cap Screw | 4 |
| E01 | SW-5 | Spring Washer | 4 |
| E02 | SW-5 | Spring Washer | 4 |
| J01 | B-3/8 | Ball | 1 |
| J02 | B-3 | Ball | 1 |
| Z01 | NP-2006 | Name Plate | 1 |
| Z02 | NPN-0X3.2 | Screw Rivet | 2 |

- CP No. denotes the assembled parts comprising of more than 1 pc. of parts. The related parts are shown in the thick frame.
- #209,210 and 509 are supplied together with parts shown in ().
- Specify parts number and quantity in ordering.

MANUFACTURER:
FUJI AIR TOOLS CO., LTD.

1-14, Kamiji 2-chome, Higashinari-ku, Osaka 537, Japan
Tel. : (06) 972-2335 (Overseas Dept) Fax : (06) 972-2250