



USER MANUAL

- IMPACT WRENCH & IMPACT DRIVER -

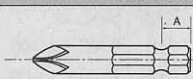
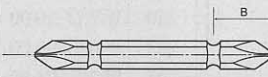
MODELS : FW-6PX-5, -6 & FW-6PXD-6, -60



FW-6PX-5, -6



FW-6PXD-6, -60

Bit Size	Size	Model
	(A) 9.5mm	FW-6PXD-6
	(B) 12mm	
	(A) 13mm	FW-6PXD-60
	(B) 16mm	

SPECIFICATIONS

Model	Capacity Screw Size (Guidance)		Rotational Frequency	Distance from Center to side		Square Drive Size		Bit Shank Size		Overall Length (without socket)		Mass (without socket)		Air Consumption (At Load)		Air Inlet Thread Size		Air Hose Size	
	mm	in		mm	in	mm	in	mm	in	mm	in	kg	lb	m ³ /min	ft ³ /min	in	mm	in	
FW-6PX-5	6	1/4	10,000	21	53/64	9.5	3/8	—	—	156	6 ⁹ /64	1.2	2.6	0.28	9.9	PT or NPT1/4	9.5	3/8	
FW-6PX-6	6	1/4	10,000	21	53/64	9.5	3/8	—	—	156	6 ⁹ /64	1.2	2.6	0.28	9.9	PT or NPT1/4	9.5	3/8	
FW-6PXD-6	6	1/4	10,000	21	53/64	—	—	6.35	1/4	168	6 ⁵ /8	1.2	2.6	0.28	9.9	PT or NPT1/4	9.5	3/8	
FW-6PXD-60	6	1/4	10,000	21	53/64	—	—	6.35	1/4	168	6 ⁵ /8	1.2	2.6	0.28	9.9	PT or NPT1/4	9.5	3/8	

The performance figures are at 0.63 MPa (6.3 bar).



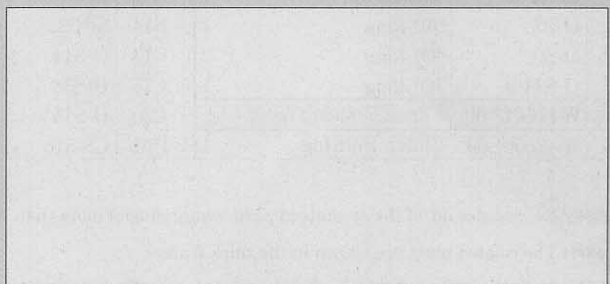
Refer to "The Instructions and Warning for Safety Use" enclosed in each tool box.

FUJI AIR TOOLS CO., LTD.

2-1-14 Kamiji, Higashinari-ku, Osaka, 537-0003 Japan

Tel : (06)6972-2335

Fax : (06)6972-2250



BOLT & NUT SETTERS
SCREW DRIVERS

ABRASIVE TOOLS

DRILLS · TAPPERS

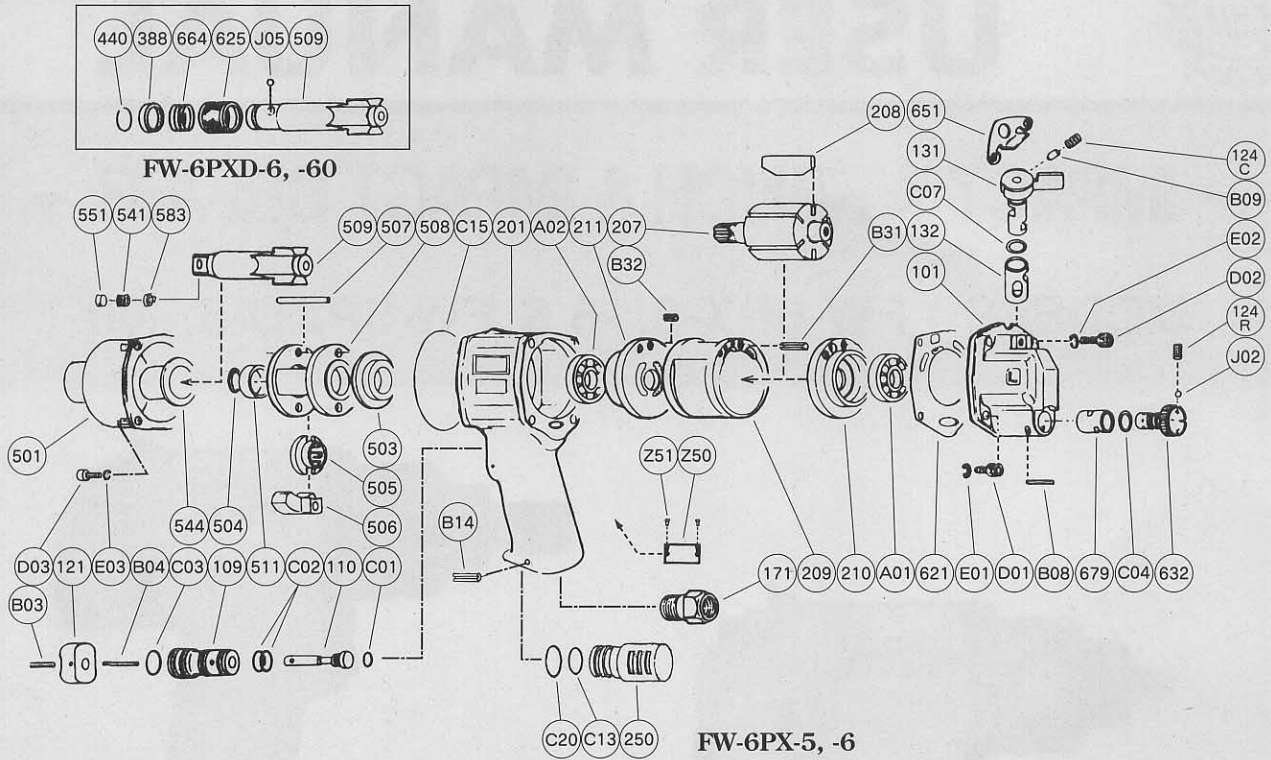
PERCUSSION TOOLS

AIR MOTORS & OTHERS

OTHER PRODUCTS



EXPLODED VIEW



PARTS LIST

Index No.	Parts No.	Parts Name	Qt.	Index No.	Parts No.	Parts Name	Qt.	Index No.	Parts No.	Parts Name	Qt.
FW-6PX-5, -6 FW-6PXD-6, -60				544	W-025544-00	Clutch Housing Bushing	1	D02	CS-520	Cap Screw	2
FW-6PX-6											
Ass'y No.	W-025001-00	Housing Cover Ass'y		207	W-172207-00	Rotor	1	D03	CS-516	Cap Screw	4
101	W-025001-50	Housing Cover	1	208	W-025208-00	Rotor Blade	6	E01	SW-5	Spring Washer	2
(132)	W-025132-00	Reverse Valve Bushing	1	209	W-025209-00	Cylinder	1	E02	SW-5	Spring Washer	2
(679)	W-025679-00	Regulator Bushing	1	(B31)	SP-2.512	Spring Pin	1	E03	SW-5	Spring Washer	4
124C	G-005124-00	Knock Spring <C>	1	(B32)	SP-2.58	Spring Pin	1	Z50	NP-1023	Name Plate	1
124R	G-005124-00	Knock Spring <R>	1	210	W-025210-00	Cylinder Upper Plate	1	Z51	NPN-0 × 3.2	Screw Rivet	2
131	W-025131-02	Reverse Valve	1	211	W-025211-00	Cylinder Lower Plate	1	FW-6PX-5			
632	W-025632-00	Regulator	1	250	W-252250-00	Exhaust Cover	1	505	W-172505-00	Cam	1
B08	SP-315	Spring Pin	1	503	W-025503-00	Spacer 	1	506	W-176506-03	Hammer Clutch	1
B09	NR-35FR	Needle Roller	1	504	W-025504-00	Spacer <C>	1	507	W-025507-00	Clutch Pin	1
C04	O-3	"O" Ring	1	505	W-176505-00	Cam	1	508	W-025508-A	Clutch Frame	1
C07	O-S7	"O" Ring	1	506	W-176506-03	Hammer Clutch	2	509	W-176509-05	Anvil 	1
J02	B-3	Ball	1	507	W-025507-00	Clutch Pin	2	(541)	W-252541-00	Button Retainer Spring <F>	1
Ass'y No.	W-176006-02	Housing Ass'y <PT>		508	W-026508-02	Clutch Frame	1	(551)	W-252551-00	Plug	1
Ass'y No.	W-176006-04	Housing Ass'y <NPT>		509	W-176509-03	Anvil 	1	583	W-252583-00	Retainer Button <F>	1
109	W-151109-00	Throttle Valve Bushing	1	(541)	W-252541-00	Button Retainer Spring <F>	1	FW-6PXD-6, -60			
110	W-151110-00	Throttle Valve	1	551	W-252551-00	Plug	1	388	W-305388-00	Spring Holder	1
121	W-125121-00	Throttle Valve Lever	1	(583)	W-252583-00	Retainer Button <F>	1	440	W-305440-00	Ring	1
171	W-025171-00	Inlet Joint <PT>	1	511	W-025511-00	Clutch Frame Bushing	1	509	W-176509-07	Anvil <D><For -6PXD-6>	1
171	W-025171-01	Inlet Joint <NPT>	1	621	W-025621-00	Packing <A>	1	509	W-176509-08	Anvil <D><For -6PXD-60>	1
201	W-176201-02	Housing	1	651	W-025651-00	Hanger	1	625	W-305625-00	Bit Cover	1
B03	SP-2.518	Spring Pin	1	A01	BB-EE3	Ball Bearing	1	664	W-305664-00	Finder Spring	1
B04	SP-2.518	Spring Pin	1	A02	BB-EE3	Ball Bearing	1	J05	B-3	Ball	1
C01	O-P3	"O" Ring	1	B14	SP-322	Spring Pin	1	Z50	NP-1025	Name Plate	1
C02	O-S9	"O" Ring	2	C13	O-S14	"O" Ring	1				
C03	O-S11.2	"O" Ring	1	C15	O-S38	"O" Ring	1				
Ass'y No.	W-176013-00	Clutch Housing Ass'y		C20	O-S15	"O" Ring	1				
501	W-176501-00	Clutch Housing	1	D01	CS-516	Cap Screw	2				

□ Ass'y No. denotes no. of the assembled parts comprising of more than 1 pc. of □ Specify parts number and quantity in ordering.

parts. The related parts are shown in the thick frame.

■ Standard Accessory :

□ Index Nos. 101, 209, and 509 are supplied together with parts shown in (). FW-6PXD-6:PB-2-375mm Driver Bit 1.