



# USER MANUAL

## IMPACT DRIVERS

MODELS : FW-66PAD-1, -10



FW-66PAD-1, -10

<BIT SIZE>

	FW-66PAD-1	FW-66PAD-10
	A : 9.5mm	A : 13mm
	B : 12mm	B : 16mm

SPECIFICATIONS

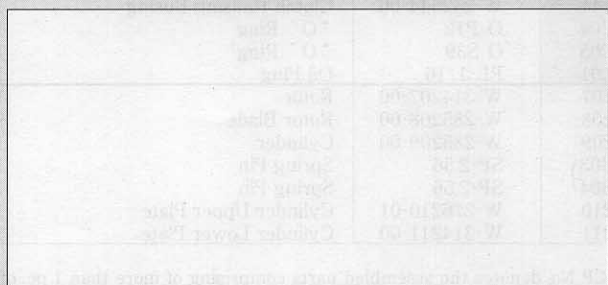
Model	Capacity Screw size (Guidance)		Free Speed (about) rpm	Side to Center (about)		Bit Shank Size		Overall Length (without socket) (about)		Mass (without socket) (about)		Air Consumption Under Load (about)		Air Inlet Thread Size	Air Hose Size	
	mm	in		mm	in	mm	in	mm	in	kg	lb	Nm <sup>3</sup> /min	Nft <sup>3</sup> /min		mm	in
FW-66PAD-1	6	1/4	5,000	22.5	57/64	6.35	1/4	143	5 5/8	0.88	1.9	0.48	16.9	1/4"	6.3	1/4
FW-66PAD-10	6	1/4	5,000	22.5	57/64	6.35	1/4	143	5 5/8	0.88	1.9	0.48	16.9	1/4"	6.3	1/4

The performance figures are at 0.63MPa (6.3bar).

⚠ Refer to "The Instructions and Warning for Safety Use" enclosed in each tool box.

### FUJI AIR TOOLS CO., LTD.

1-14, Kamiji 2-chome, Higashinariku,  
Osaka, 537-0003 Japan  
Tel : (06) 972-2335  
Fax : (06) 972-2250



BOLT & NUT SETTERS  
SCREW DRIVERS

ABRASIVE TOOLS

DRILLS • TAPPERS

PERCUSSION TOOLS

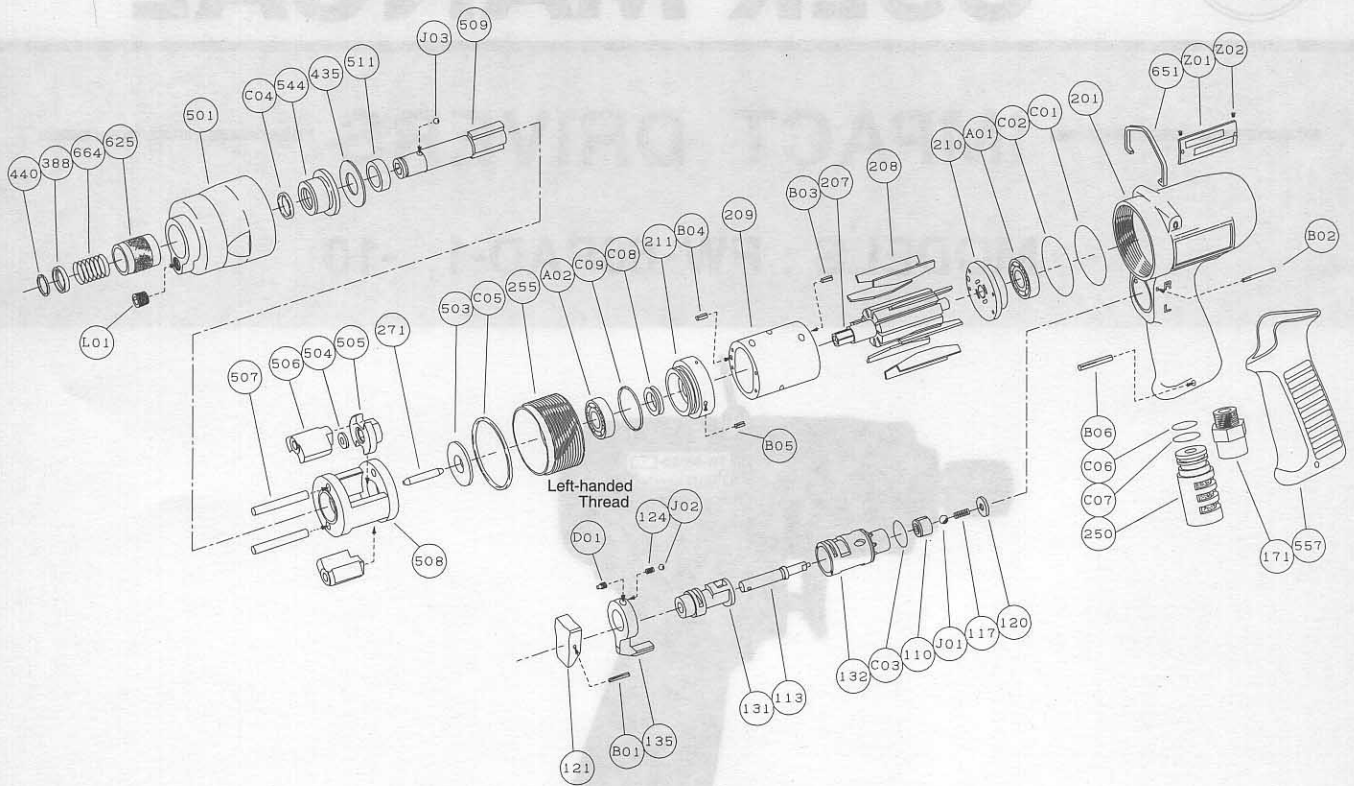
AIR MOTORS & OTHERS

OTHER PRODUCTS



# PARTS LIST MODEL: FW-66PAD-1, -10

## EXPLODED VIEW



FW-66PAD-1, -10

## PARTS LIST

Index No.	Parts No.	Parts Name	Qt.	Index No.	Parts No.	Parts Name	Qt.
<b>FW-66PAD-1, -10</b>							
CP No.	W-285006-01	Housing CP		(B05)	SP-2.55	Spring Pin	1
110	W-305110-00	Throttle Valve	1	250	W-276250-00	Exhaust Cover	1
113	W-276113-00	Throttle Valve Rod	1	255	W-314255-00	Motor Fastening Nut	1
117	W-276117-00	Throttle Valve Spring	1	271	W-191271-00	Rotor Pin	1
120	W-276120-00	Throttle Valve Cover	1	388	W-305388-00	Spring Holder	1
121	W-254121-00	Throttle Valve Lever	1	435	W-242435-00	Thrust Washer	1
124	W-254124-00	Knock Spring	1	440	W-305440-00	Ring	1
131	W-276131-00	Reverse Valve	1	503	W-314503-00	Spacer (B)	1
132	W-276132-00	Reverse Valve Bushing	1	504	W-305504-00	Spacer (C)	1
135	W-254135-00	Reverse Valve Lever	1	505	W-305505-00	Cam	1
171	W-276171-00	Inlet Bushing (PT)	1	506	W-305506-00	Hammer Clutch	2
171	W-276171-01	Inlet Bushing (NPT)	1	507	W-242507-00	Clutch Pin	2
201	W-285201-01	Housing	1	508	W-242508-00	Clutch Frame	1
B01	SP-212	Spring Pin	1	509	W-305509-01	Anvil (FW-66PAD-1)	1
B02	GP-220GLC	Grooved Pin	1	511	W-242511-00	Clutch Frame Busing	1
C01	O-S34	"O" Ring	1	557	W-276557-00	Rubber Protector	1
C02	O-S34	"O" Ring	1	625	W-305625-00	Bit Cover	1
C03	O-S15	"O" Ring	1	651	W-225651-00	Hanger	1
D01	SS-46D	Set Screw	1	664	W-305664-00	Finder Spring	1
J01	B-4U	Urethan Ball	1	A01	BB-EE2	Ball Bearing	1
J02	B-3	Ball	1	A02	BB-6900	Ball Bearing	1
CP No.	W-314013-00	Clutch Housing CP		B06	SP-320	Spring Pin	1
501	W-314501-00	Clutch Housing	1	C06	O-S14	"O" Ring	1
544	W-242544-00	Clutch Housing Busing	1	C07	O-S15	"O" Ring	1
C04	O-P12	"O" Ring	1	C08	O-4111	Quadring	1
C05	O-S39	"O" Ring	1	C09	O-S24	"O" Ring	1
L01	PL-1/16	Oil Plug	1	J03	B-3	Ball	1
207	W-314207-00	Rotor	1	Z01	NP-1095	Name Plate	1
208	W-285208-00	Rotor Blade	9	Z01	NPN-0×3.2	Screw Rivet	2
209	W-285209-00	Cylinder	1	<b>FW-66PAD-10</b>			
(B03)	SP-2.56	Spring Pin	1	509	W-305509-00	Anvil	1
(B04)	SP-2.56	Spring Pin	1	● Replace two "O" rings (C05) (C04) and pour new transmission oil (viscosity 32) from oil plug always after repairing.			
210	W-276210-01	Cylinder Upper Plate	1				
211	W-314211-00	Cylinder Lower Plate	1				

CP No. denotes the assembled parts comprising of more than 1 pc. of parts. The related parts are shown in the thick frame.

#209 and 211 are supplied together with parts shown in ( ).  
 Specify parts number and quantity in ordering.