



USER MANUAL

IMPACT WRENCH&DRIVER (Oil Bath Type)

MODELS : FW-66PA-2, FW-66PAD-2, -20



FW-66PA-2



FW-66PAD-2, -20

SPECIFICATIONS

Model	Capacity (Guidance)		Free Speed	Side to Center		Square Drive Size		Bit Shank Size		Overall Length		Mass		Air Consumption (Under Load)		Air Inlet Thread Size		Air Hose Size	
	mm	in		mm	in	mm	in	mm	in	mm	in	kg	lb	Nm ² /min	Nft ³ /min	in	mm	in	
FW-66PA-2	6	1/4	5,000	22.5	57/64	9.5	3/8	—	—	137	5 ²⁵ / ₆₄	0.88	1.9	0.48	16.9	PTorNPT 1/4	6.3	1/4	
FW-66PAD-2	6	1/4	5,000	22.5	57/64	—	—	6.35	1/4	143	5 ⁵ / ₈	0.88	1.9	0.48	16.9	PTorNPT 1/4	6.3	1/4	
FW-66PAD-20	6	1/4	5,000	22.5	57/64	—	—	6.35	1/4	143	5 ⁵ / ₈	0.88	1.9	0.48	16.9	PTorNPT 1/4	6.3	1/4	

The performance figures are at 0.63 MPa (6.3bar).



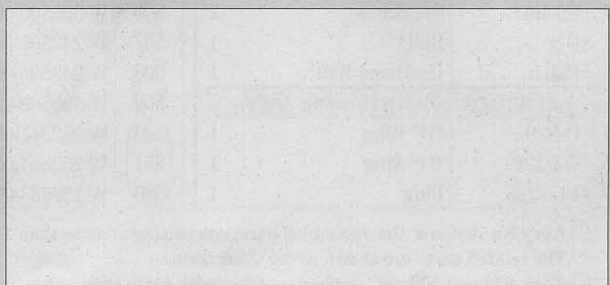
Refer to "The Instructions and Warning for Safety Use" enclosed in each tool box.

FUJI AIR TOOLS CO., LTD.

2-1-14 Kamiji, Higashinari-ku, Osaka 537-0003, Japan

Tel : (06)6972-2335

Fax : (06)6972-2250



BOLT & NUT SETTERS
SCREW DRIVERS

ABRASIVE TOOLS

DRILLS · TAPPERS

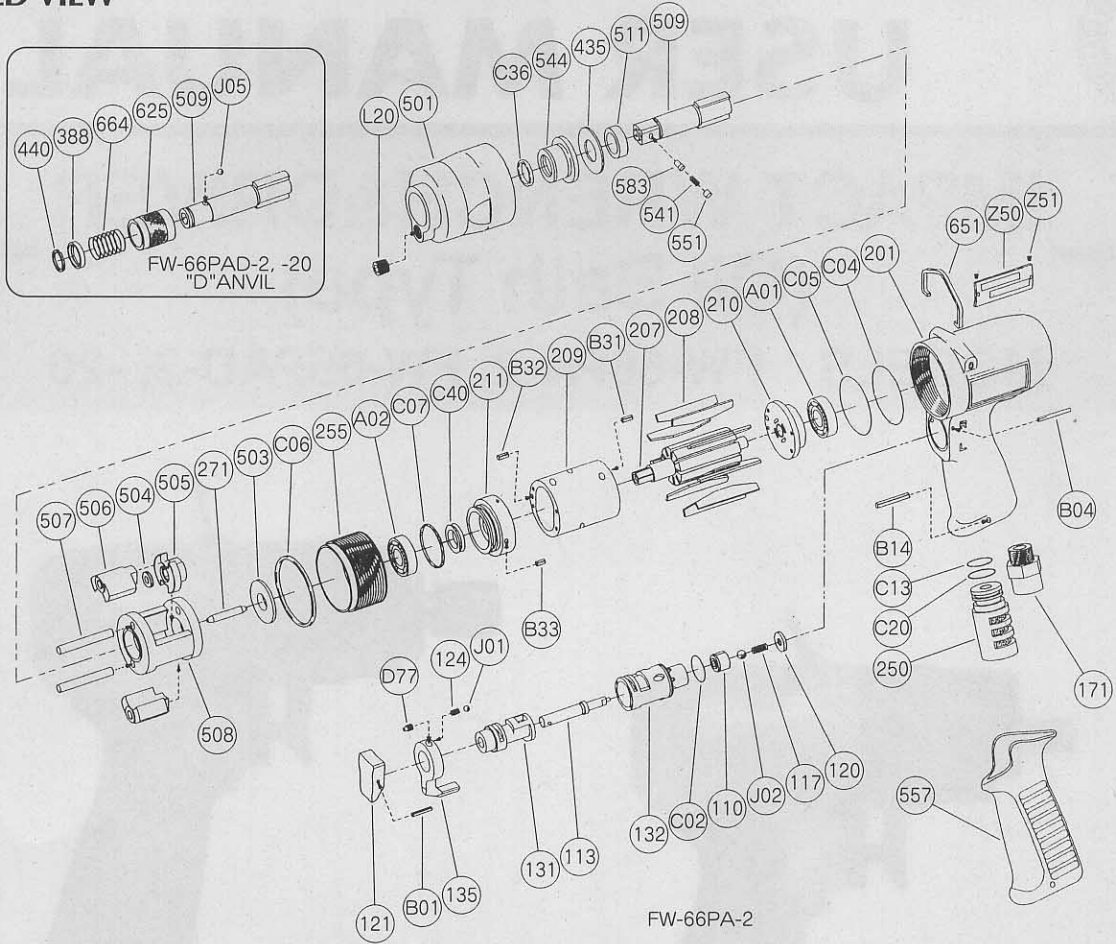
PERCUSSION TOOLS

AIR MOTORS & OTHERS

OTHER PRODUCTS

PARTS LIST MODEL : FW-66PA-2, FW-66PAD-2, -20

EXPLODED VIEW



PARTS LIST

Index No.	Parts No.	Parts Name	Qt.	Index No.	Parts No.	Parts Name	Qt.	Index No.	Parts No.	Parts Name	Qt.
FW-66PA-2 FW-66PAD-2, -20				Ass'y No.	W-314013-50	Clutch Housing Semi Ass'y		511	W-242511-00	Clutch Frame Bushing	1
Ass'y No.	W-285006-04	Housing Ass'y <PT>		501	W-314501-00	Clutch Housing	1	557	W-276557-00	Rubber Protector	1
Ass'y No.	W-285006-09	Housing Ass'y <NPT>		544	W-242544-00	Clutch Housing Bushing	1	651	W-225651-00	Hanger	1
110	W-276110-01	Throttle Valve	1	FW-66PA-2				A01	BB-EE2	Ball Bearing	1
113	W-276113-01	Throttle Valve Rod	1	207	W-314207-00	Rotor	1	A02	BB-6900	Ball Bearing	1
117	W-276117-00	Throttle Valve Spring	1	208	W-285208-00	Rotor Blade	9	B14	SP-320	Spring Pin	1
120	W-276120-01	Throttle Valve Cover	1	209	W-285209-00	Cylinder	1	C04	O-S34	"O" Ring	1
121	W-254121-00	Throttle Valve Lever	1	(B31)	SP-2.56	Spring Pin	1	C05	O-S34	"O" Ring	1
124	W-254124-00	Knock Spring	1	(B32)	SP-2.56	Spring Pin	1	C07	O-S24	"O" Ring	1
131	W-276131-00	Reverse Valve	1	210	W-276210-01	Cylinder Upper Plate	1	C13	O-S14	"O" Ring	1
132	W-276132-01	Reverse Valve Bushing	1	211	W-314211-00	Cylinder Lower Plate	1	C20	O-S15	"O" Ring	1
135	W-254135-00	Reverse Valve Lever	1	(B33)	SP-2.55	Spring Pin	1	C40	O-4111	Quad Ring	1
171	W-276171-00	Inlet Bushing <PT>	1	250	W-276250-00	Exhaust Cover	1	Z50	NP-1102	Name Plate	1
	W-276171-01	Inlet Bushing <NPT>	1	255	W-314255-00	Motor Fastening Nut	1	Z51	NPN-0X3.2	Screw Rivet	2
201	W-285201-01	Housing	1	271	W-191271-00	Rotor Pin	1	It is common with FW-66PA-2 excluding the undermentioned Parts.			
B01	SP-212	Spring Pin	1	435	W-242435-00	Thrust Washer	1	FW-66PAD-2, -20			
B04	GP-220GLC	Grooved Pin	1	503	W-314503-00	Spacer 	1	388	W-305388-00	Spring Holder	1
C02	O-S15	"O" Ring	1	504	W-305504-00	Spacer <C>	1	440	W-305440-00	Ring	1
D77	SS-46D	Set Screw	1	505	W-305505-00	Cam	1	509	W-305509-01	Anvil <D>(For FW-66PAD-2)	1
J01	B-3	Ball	1	506	W-305506-00	Hammer Clutch	2	509	W-305509-00	Anvil <D>(For FW-66PAD-20)	1
J02	B-4U	Urethane Ball	1	507	W-242507-00	Clutch Pin	2	625	W-305625-00	Bit Cover	1
Ass'y No.	W-314013-00	Clutch Housing Ass'y		508	W-242508-00	Clutch Frame	1	664	W-305664-00	Finder Spring	1
C06	O-S39	"O" Ring	1	509	W-305509-03	Anvil 	1	J05	B-3	Ball	1
C36	O-P12F	"O" Ring	1	(541)	W-252541-00	Button Retainer Spring <F>	1	Z50	NP-1095	Name Plate	1
L20	PL-1/16	Plug	1	551	W-252551-00	Plug	1				
				583	W-252583-00	Retainer Button <F>	1				

- Ass'y No. denotes the assembled parts comprising of more than 1 pc. of parts.
The related parts are shown in the thick frame.
- #209, 211 and 509 are supplied together with parts shown in ().
- Specify parts number and quantity in ordering.