



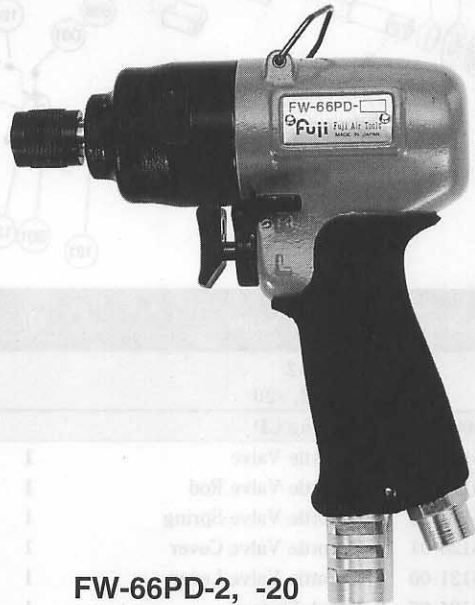
USER MANUAL

— IMPACT WRENCH & DRIVER —

MODELS : FW-66P-2, -66PD-2, -20



FW-66P-2



FW-66PD-2, -20

SPECIFICATIONS

| Model | Capacity (Guidance) | | Free Speed min ⁻¹ | Side to Center | | Square Drive Size | | Bit Shank Size | | Overall Length | | Mass | | Air Consumption (Under Load) | | Air Inlet Thread Size | Air Hose Size | |
|------------|---------------------|-----|---------------------------------|----------------|-----|-------------------|-----|----------------|-----|----------------|---------|------|-----|------------------------------|-----------------------|-----------------------|---------------|-----|
| | mm | in | | mm | in | mm | in | mm | in | mm | in | kg | lb | Nm ³ /min | Nft ³ /min | | in | mm |
| FW-66P-2 | 6 | 1/4 | 6,000 | 22.5 | 5/8 | 9.5 | 3/8 | — | — | 135 | 5 5/16 | 0.85 | 1.8 | 0.48 | 16.9 | PT or NPT 1/4 | 6.3 | 1/4 |
| FW-66PD-2 | 6 | 1/4 | 6,000 | 22.5 | 5/8 | — | — | 6.35 | 1/4 | 141 | 5 35/64 | 0.85 | 1.8 | 0.48 | 16.9 | PT or NPT 1/4 | 6.3 | 1/4 |
| FW-66PD-20 | 6 | 1/4 | 6,000 | 22.5 | 5/8 | — | — | 6.35 | 1/4 | 141 | 5 35/64 | 0.85 | 1.8 | 0.48 | 16.9 | PT or NPT 1/4 | 6.3 | 1/4 |

The performance figures are at 0.63 MPa (6.3 bar).

⚠ Refer to "The Instructions and Warning for Safety Use" enclosed in each tool box.

FUJI AIR TOOLS CO., LTD.

2-1-14 Kamiji, Higashinariku, Osaka 537-0003, Japan

Tel : (06) 6972-2335

Fax : (06) 6972-2250

BOLT & NUT SETTERS
SCREW DRIVERS

ABRASIVE TOOLS

DRILLS • TAPPERS

PERCUSSION TOOLS

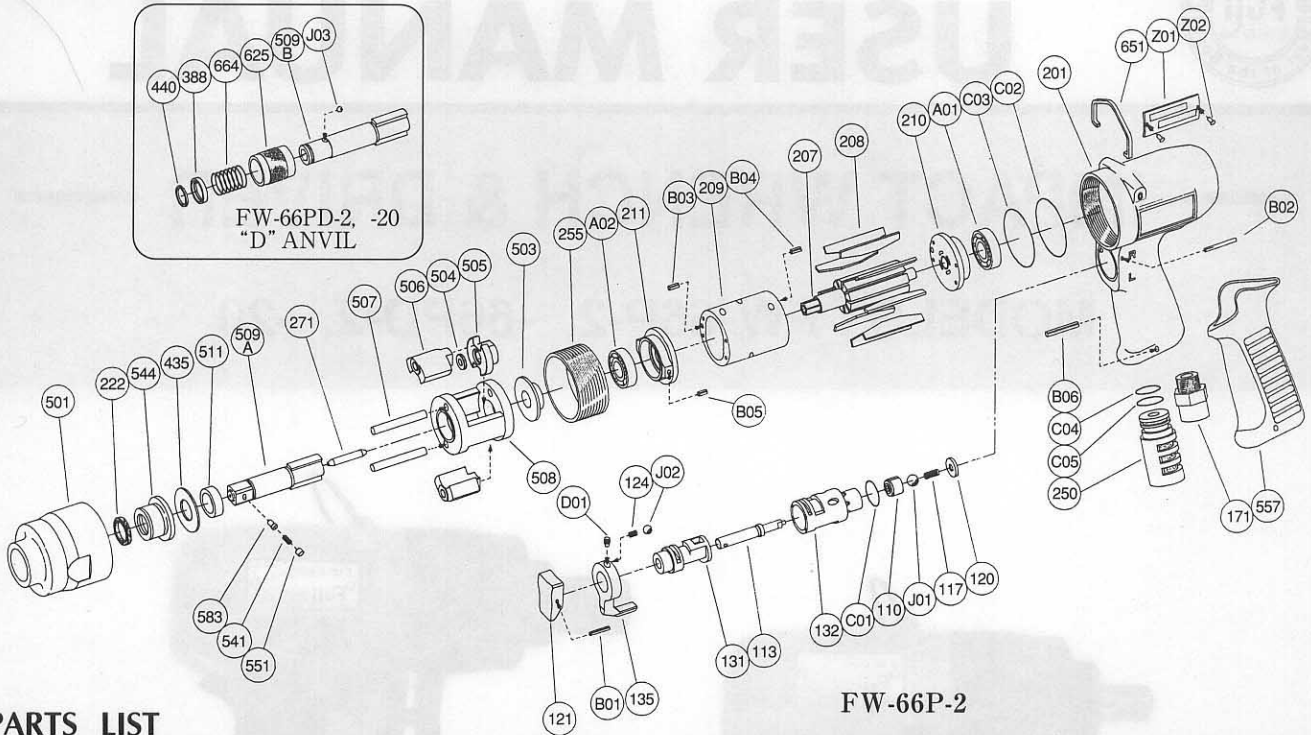
AIR MOTORS & OTHERS

OTHER PRODUCTS



PARTS LIST MODEL: FW-66P-2, -66PD-2, -20

EXPLODED VIEW



PARTS LIST

| Index No. | Parts No. | Parts Name | Qt. |
|------------------------------------|--------------------|--------------------------|-----|
| FW-66P-2 FW-66PD-2, -20 | | | |
| CP No. | W-285006-04 | Housing CP | |
| 110 | W-276110-01 | Throttle Valve | 1 |
| 113 | W-276113-01 | Throttle Valve Rod | 1 |
| 117 | W-276117-00 | Throttle Valve Spring | 1 |
| 120 | W-276120-01 | Throttle Valve Cover | 1 |
| 121 | W-254121-00 | Throttle Valve Lever | 1 |
| 124 | W-254124-00 | Knock Spring | 1 |
| 131 | W-276131-00 | Reverse Valve | 1 |
| 132 | W-276132-01 | Reverse Valve Bushing | 1 |
| 135 | W-254135-00 | Reverse Valve Lever | 1 |
| 171 | W-276171-00 | Inlet Bushing (PT) | 1 |
| 171 | W-276171-01 | Inlet Bushing (NPT) | 1 |
| 201 | W-285201-01 | Housing | 1 |
| B01 | SP-212 | Spring Pin | 1 |
| B02 | GP-220GLC | Grooved Pin | 1 |
| C01 | O-S15 | "O" Ring | 1 |
| D01 | SS-46D | Set Screw | 1 |
| J01 | B-4U | Urethane Ball | 1 |
| J02 | B-3 | Ball | 1 |
| CP No. | W-307013-00 | Clutch Housing CP | |
| 222 | W-242222-00 | Felt Ring | 1 |
| 501 | W-307501-00 | Clutch Housing | 1 |
| 544 | W-242544-00 | Clutch Housing Bushing | 1 |
| FW-66P-2 | | | |
| 207 | W-307207-00 | Rotor | 1 |
| 208 | W-285208-00 | Rotor Blade | 9 |
| 209 | W-285209-00 | Cylinder | 1 |
| (B03) | SP-2.56 | Spring Pin | 1 |
| (B04) | SP-2.56 | Spring Pin | 1 |
| 210 | W-276210-01 | Cylinder Upper Plate | 1 |
| 211 | W-276211-01 | Cylinder Lower Plate | 1 |
| (B05) | SP-2.55 | Spring Pin | 1 |
| 250 | W-276250-00 | Exhaust Cover | 1 |

| Index No. | Parts No. | Parts Name | Qt. |
|-----------------------|-------------|----------------------------|-----|
| 255 | W-307255-00 | Motor Fastening Nut | 1 |
| 271 | W-191271-00 | Rotor Pin | 1 |
| 435 | W-242435-00 | Thrust Washer | 1 |
| 503 | W-307503-00 | Spacer (B) | 1 |
| 504 | W-305504-00 | Spacer (C) | 1 |
| 505 | W-305505-00 | Cam | 1 |
| 506 | W-305506-00 | Hammer Clutch | 2 |
| 507 | W-242507-00 | Clutch Pin | 2 |
| 508 | W-242508-00 | Clutch Frame | 1 |
| 509A | W-305509-03 | Anvil (B) | 1 |
| (541) | W-252541-00 | Button Retainer Spring (F) | 1 |
| (551) | W-252551-00 | Plug | 1 |
| (583) | W-252583-00 | Retainer Button (F) | 1 |
| 511 | W-242511-00 | Clutch Frame Bushing | 1 |
| 557 | W-276557-00 | Rubber Protector | 1 |
| 651 | W-225651-00 | Hanger | 1 |
| A01 | BB-EE2 | Ball Bearing | 1 |
| A02 | BB-EE3 | Ball Bearing | 1 |
| B06 | SP-320 | Spring Pin | 1 |
| C02 | O-S34 | "O" Ring | 1 |
| C03 | O-S34 | "O" Ring | 1 |
| C04 | O-S14 | "O" Ring | 1 |
| C05 | O-S15 | "O" Ring | 1 |
| Z01 | NP-1101 | Name Plate | 1 |
| Z02 | NPN-0×3.2 | Screw Rivet | 2 |
| FW-66PD-2, -20 | | | |
| 388 | W-305388-00 | Spring Holder | 1 |
| 440 | W-305440-00 | Ring | 1 |
| 509B | W-305509-01 | Anvil (D) (For FW-66PD-2) | 1 |
| 509B | W-305509-00 | Anvil (D) (For FW-66PD-20) | 1 |
| 625 | W-305625-00 | Bit Cover | 1 |
| 664 | W-305664-00 | Finder Spring | 1 |
| J03 | B-3 | Ball | 1 |
| Z01 | NP-1081 | Name Plate | 1 |

□ CP No. denotes the assembled parts comprising of more than 1 pc. of parts.
The related parts are shown in the thick frame.

□ #209, 211 and 509A are supplied together with parts shown in ().
□ Specify parts number and quantity in ordering.