

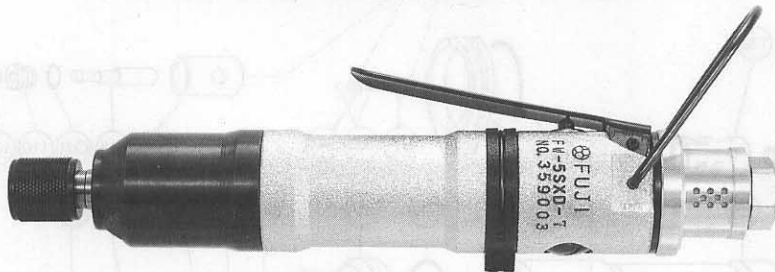


# USER MANUAL

## SCREW DRIVERS

(IMPACT CLUTCH TYPE)

MODELS : FW-5SXD-7, -70, -8, -80



FW-5SXD-7, -70



FW-5SXD-8, -80

Bit Size	Size	Model
	(A) 9.5mm	FW-5SXD-7, -8
	(B) 12 mm	
	(A) 13 mm	FW-5SXD-70, -80
	(B) 16 mm	

### SPECIFICATIONS

Model	Capacity Screw Size (Guidance)		Rotational Frequency	Distance from Center to Side		Bit Shank Size		Overall Length (without socket)		Mass		Air Consumption (At Load)		Air Inlet Thread Size	Air Hose Size	
	mm	in		mm	in	mm	in	mm	in	kg	lb	m <sup>3</sup> /min	ft <sup>3</sup> /min	in	mm	in
FW-5SXD-7, -70	5	3/16	12,000	17.0	43/64	6.35	1/4	223	8 25/32	0.70	1.5	0.20	7.1	PT or NPT 1/4	6.3	1/4
FW-5SXD-8, -80	5	3/16	12,000	17.0	43/64	6.35	1/4	193	7 19/32	0.65	1.4	0.20	7.1	PT or NPT 1/4	6.3	1/4

The performance figures are at 0.63MPa (6.3bar).

⚠ Refer to "The Instructions and Warning for Safety Use" enclosed in each tool box.

FUJI AIR TOOLS CO., LTD.

2-1-14 Kamiji, Higashinariku, Osaka 537-0003, Japan

Tel : (06) 6972-2335

Fax : (06) 6972-2250

BOLT & NUT SETTERS  
SCREW DRIVERS

ABRASIVE TOOLS

DRILLS • TAPPERS

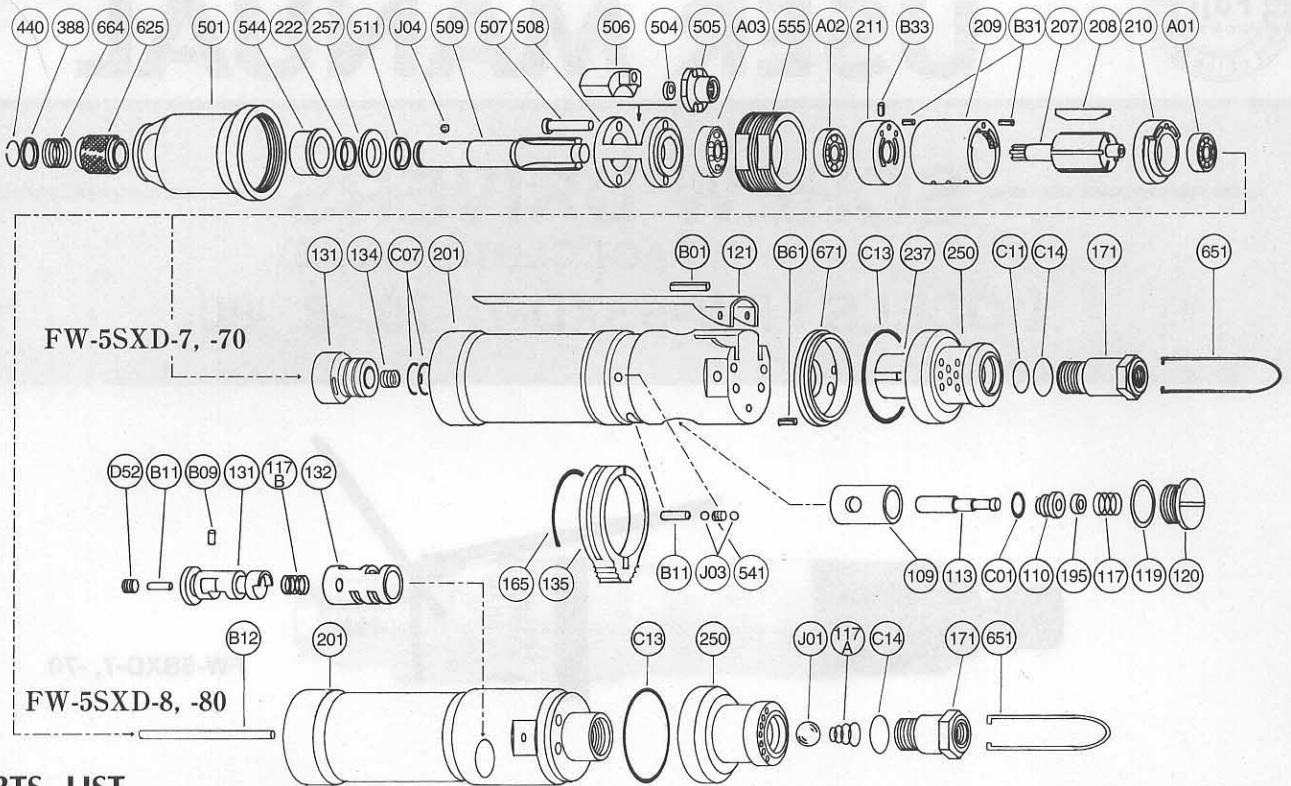
PERCUSSION TOOLS

AIR MOTORS & OTHERS

OTHER PRODUCTS

# PARTS LIST MODEL: FW-5SXD-7, -70, -8, -80

## EXPLODED VIEW



## PARTS LIST

Index No.	Parts No.	Parts Name	Qt.	Index No.	Parts No.	Parts Name	Qt.	Index No.	Parts No.	Parts Name	Qt.
<b>FW-5SXD-7, -70</b>				211	W-216211-00	Cylinder Lower Plate	1	B09	NR-2.44.5	Needle Roller	1
<b>FW-5SXD-7, -70</b>				(B33)	SP-1.64	Spring Pin	1	B11	NR-211	Needle Roller	1
Assy No.	W-216006-02	Housing Ass'y		257	D-026257-00	Washer	1	C13	O-S30	"O" Ring	1
109	W-216109-00	Throttle Valve Bushing	1	388	W-305388-00	Spring Holder	1	C14	O-S16	"O" Ring	1
110	W-215110-00	Throttle Valve	1	440	W-305440-00	Ring	1	D52	SS-46	Set Screw	1
113	W-216113-01	Throttle Valve Rod	1	504	W-215504-00	Spacer <C>	1	J01	B-8	Ball	1
117	W-216117-00	Throttle Valve Spring	1	505	W-215505-01	Cam	1	Assy No.	W-215013-01	Clutch Housing Ass'y	
119	D-021119-00	T.V. Cover Packing	1	506	W-215506-00	Hammer Clutch	2	222	W-306222-00	Felt Ring	1
120	D-021120-00	Throttle Valve Cover	1	507	W-067507-00	Clutch Pin	2	501	W-215501-00	Clutch Housing	1
121	G-146121-00	Throttle Valve Lever	1	508	W-215508-01	Clutch Frame	1	544	W-215544-01	Clutch Housing Bushing	1
171	W-100171-00	Inlet Joint <PT>	1	509	W-215509-02	Anvil <D> <for -7>	1	207	W-067207-00	Rotor	1
171	W-100171-01	Inlet Joint <NPT>	1	509	W-215509-03	Anvil <D> <for -70>	1	208	W-067208-00	Rotor Blade	5
195	W-276195-00	Sub Throttle Valve	1	511	W-215511-00	Clutch Frame Bushing	1	209	W-067209-00	Cylinder	1
201	W-216201-01	Housing	1	541	W-252541-00	Button Retainer Spring <F>	1	(B31)	SP-1.66	Spring Pin	2
237	W-216237-00	Muffler Pad	1	555	W-215555-01	Clutch Housing Joint	1	210	W-067210-00	Cylinder Upper Plate	1
250	W-216250-01	Exhaust Cover	1	625	W-305625-00	Bit Cover	1	211	W-216211-00	Cylinder Lower Plate	1
671	W-216671-01	Exhaust Cover Joint	1	651	W-100651-00	Hanger	1	(B33)	SP-1.64	Spring Pin	1
B61	SP-2.56	Spring Pin	1	664	W-305664-00	Finder Spring	1	257	D-026257-00	Washer	1
B01	SP-320	Spring Pin	1	A01	BB-696	Ball Bearing	1	388	W-305388-00	Spring Holder	1
C01	O-P5	"O" Ring	1	A02	BB-607	Ball Bearing	1	440	W-305440-00	Ring	1
C13	O-S30	"O" Ring	1	A03	BB-6901	Ball Bearing	1	504	W-215504-00	Spacer <C>	1
C14	O-S16	"O" Ring	1	B11	NR-413.5	Needle Roller	1	505	W-215505-01	Cam	1
C11	O-S10	"O" Ring	1	C07	O-S12.5	"O" Ring	2	506	W-215506-01	Hammer Clutch	2
Assy No.	W-215013-01	Clutch Housing Ass'y		J03	B-3	Ball	2	507	W-067507-00	Clutch Pin	2
222	W-306222-00	Felt Ring	1	J04	B-3	Ball	1	508	W-215508-01	Clutch Frame	1
501	W-215501-00	Clutch Housing	1	<b>FW-5SXD-8, -80</b>				509	W-215509-02	Anvil <D> <for -8>	1
544	W-215544-01	Clutch Housing Bushing	1	Assy No.	W-217006-00	Housing Ass'y		509	W-215509-03	Anvil <D> <for -80>	1
131	W-216131-00	Reverse Valve	1	117A	W-067117-00	Throttle Valve Spring	1	555	W-215555-01	Clutch Housing Joint	1
134	W-216134-00	Reverse Valve Spring	1	117B	D-021117-00	Throttle Valve Spring	1	625	W-305625-00	Bit Cover	1
135	W-216135-00	Reverse Valve Lever	1	131	W-100131-00	Reverse Valve	1	651	W-100651-00	Hanger	1
165	W-216165-00	Stop Ring	1	132	W-100132-00	Reverse Valve Bushing	1	664	W-305664-00	Finder Spring	1
207	W-216207-00	Rotor	1	171	W-146171-00	Inlet Joint <PT>	1	A01	BB-606	Ball Bearing	1
208	W-067208-00	Rotor Blade	5	171	W-146171-01	Inlet Joint <NPT>	1	A02	BB-607	Ball Bearing	1
209	W-067209-00	Cylinder	1	201	W-217201-00	Housing	1	A03	BB-6901	Ball Bearing	1
(B31)	SP-1.66	Spring Pin	2	250	W-216250-00	Exhaust Cover	1	B12	NR-242	Needle Roller	2
210	W-216210-00	Cylinder Upper Plate	1					J04	B-3	Ball	1

□ Assy No. denotes the assembled parts comprising of more than 1 pc. of parts.  
The related parts are shown in the thick frame.  
□ #209 and 211 are supplied together with parts shown in ( ).  
□ Specify parts number and quantity in ordering.

■ Standard Accessories :  
FW-5SXD-7, -70.....W-17 1/4x1/4 Air Regulator 1.  
FW-5SXD-8, -80.....EH-50A 25mmx0.5m Exhaust Hose 1.  
IH-6A PT1/4xPT1/4 Inlet Hose 1.  
FW-5SXD-7, -8.....PB-2.3 75mm Driver Bit 1.